



ORE RESEARCH & EXPLORATION P/L ABN 28 006 859 856
37A Hosie Street · Bayswater North · VIC 3153 · AUSTRALIA
☎ 61 3 9729 0333 ☎ 61 3 9729 8338
📧 info@ore.com.au 🌐 www.ore.com.au

CERTIFICATE OF ANALYSIS FOR

Pegmatite Li Ore

(Bynoe Pegmatite Field, Northern Territory, Australia)

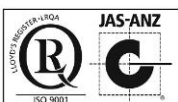
CERTIFIED REFERENCE MATERIAL

OREAS 753

Summary Statistics for Key Analytes.

Constituent	Certified Value	1SD	95% Confidence Limits		95% Tolerance Limits	
			Low	High	Low	High
Peroxide Fusion ICP						
Li, Lithium (wt.%)	1.02	0.023	1.01	1.03	1.00	1.03
Li ₂ O, Lithium oxide (wt.%)	2.19	0.050	2.17	2.21	2.16	2.22
4-Acid Digestion						
Li, Lithium (wt.%)	0.985	0.031	0.970	1.000	0.969	1.000
Li ₂ O, Lithium oxide (wt.%)	2.12	0.067	2.09	2.15	2.09	2.15

SI unit equivalents: ppm, parts per million \equiv mg/kg \equiv μ g/g \equiv 0.0001 wt.% \equiv 1000 ppb, parts per billion.
Note: intervals may appear asymmetric due to rounding.



Document: COA-1422-OREAS753-R2

(Template: BUP-70-10-01 Rev:2.0)

22-February-2019

TABLE OF CONTENTS

INTRODUCTION	6
SOURCE MATERIAL.....	6
COMMINUTION AND HOMOGENISATION PROCEDURES	7
ANALYTICAL PROGRAM	7
STATISTICAL ANALYSIS.....	8
PARTICIPATING LABORATORIES	12
PREPARER AND SUPPLIER.....	15
METROLOGICAL TRACEABILITY	15
COMMUTABILITY	15
INTENDED USE	16
STABILITY AND STORAGE INSTRUCTIONS	16
INSTRUCTIONS FOR CORRECT USE	16
HANDLING INSTRUCTIONS	16
LEGAL NOTICE.....	16
DOCUMENT HISTORY	16
QMS ACCREDITED	17
CERTIFYING OFFICER	17
REFERENCES	17

LIST OF TABLES

Table 1. Certified Values, SDs, 95% Confidence & Tolerance Limits for OREAS 753.	3
Table 2. Indicative Values for OREAS 753.	5
Table 3. Performance Gates for OREAS 753.	9

LIST OF FIGURES

Figure 1. Li ₂ O (wt.%) by peroxide fusion ICP in OREAS 753	13
Figure 2. Li ₂ O (wt.%) by 4-acid digestion in OREAS 753.....	14

Table 1. Certified Values, SDs, 95% Confidence & Tolerance Limits for OREAS 753.

Constituent	Certified Value	SD	95% Confidence Limits		95% Tolerance Limits	
			Low	High	Low	High
Peroxide Fusion ICP						
Al, Aluminium (wt.%)	8.57	0.219	8.45	8.69	8.46	8.69
Ba, Barium (ppm)	18.7	1.73	17.6	19.9	17.4	20.0
Be, Beryllium (ppm)	120	7	116	124	115	125
Bi, Bismuth (ppm)	2.31	0.215	2.14	2.48	2.17	2.45
Ca, Calcium (wt.%)	0.109	0.027	0.090	0.129	0.098	0.120
Cd, Cadmium (ppm)	1.52	0.149	1.37	1.67	IND	IND
Ce, Cerium (ppm)	0.79	0.20	0.61	0.97	IND	IND
Co, Cobalt (ppm)	1.07	0.14	0.97	1.17	IND	IND
Cs, Cesium (ppm)	62	4.2	60	64	60	64
Cu, Copper (ppm)	22.8	4.3	17.3	28.4	IND	IND
Dy, Dysprosium (ppm)	0.18	0.03	0.15	0.20	IND	IND
Fe, Iron (wt.%)	0.871	0.046	0.851	0.891	0.850	0.892
Ga, Gallium (ppm)	16.6	1.07	15.9	17.3	16.0	17.3
Gd, Gadolinium (ppm)	0.14	0.03	0.13	0.16	IND	IND
Ge, Germanium (ppm)	6.58	0.572	6.19	6.96	5.97	7.18
K, Potassium (wt.%)	1.95	0.094	1.91	1.99	1.91	1.98
La, Lanthanum (ppm)	0.37	0.06	0.32	0.41	IND	IND
Li, Lithium (wt.%)	1.02	0.023	1.01	1.03	1.00	1.03
Li ₂ O, Lithium oxide (wt.%)	2.19	0.050	2.17	2.21	2.16	2.22
Mn, Manganese (wt.%)	0.076	0.004	0.074	0.078	0.075	0.078
Mo, Molybdenum (ppm)	3.71	0.60	3.22	4.20	IND	IND
Nb, Niobium (ppm)	36.2	3.26	34.0	38.3	34.7	37.6
Nd, Neodymium (ppm)	0.26	0.07	0.20	0.33	IND	IND
P, Phosphorus (wt.%)	0.103	0.009	0.097	0.109	0.097	0.109
Pr, Praseodymium (ppm)	0.087	0.020	0.074	0.101	IND	IND
Rb, Rubidium (ppm)	618	22	605	630	602	633
Sm, Samarium (ppm)	0.11	0.04	0.08	0.14	IND	IND
Sn, Tin (ppm)	135	5	132	139	128	143
Sr, Strontium (ppm)	30.9	3.4	28.3	33.4	29.1	32.6
Ta, Tantalum (ppm)	19.8	1.36	19.1	20.5	18.8	20.8
Tl, Thallium (ppm)	3.66	0.238	3.48	3.85	3.52	3.80
U, Uranium (ppm)	6.15	0.524	5.75	6.55	5.92	6.38
W, Tungsten (ppm)	5.32	0.54	4.97	5.66	5.08	5.55
Y, Yttrium (ppm)	0.82	0.14	0.72	0.92	IND	IND
Zn, Zinc (ppm)	88	6.8	82	93	83	92
Zr, Zirconium (ppm)	11.6	3.3	8.3	14.8	10.4	12.7

SI unit equivalents: ppm, parts per million \equiv mg/kg \equiv μ g/g \equiv 0.0001 wt.% \equiv 1000 ppb, parts per billion.

Note 1: intervals may appear asymmetric due to rounding.

Note 2: the number of decimal places quoted does not imply accuracy of the certified value to this level but are given to minimise rounding errors when calculating 2SD and 3SD windows.

Table 1 continued.

Constituent	Certified Value	SD	95% Confidence Limits		95% Tolerance Limits	
			Low	High	Low	High
Borate Fusion XRF						
Al ₂ O ₃ , Aluminium(III) oxide (wt.%)	16.40	0.121	16.35	16.46	16.33	16.48
CaO, Calcium oxide (wt.%)	0.160	0.007	0.157	0.163	0.156	0.163
Fe ₂ O ₃ , Iron(III) oxide (wt.%)	1.25	0.021	1.24	1.26	1.24	1.26
K ₂ O, Potassium oxide (wt.%)	2.36	0.022	2.35	2.37	2.34	2.37
MnO, Manganese oxide (wt.%)	0.100	0.004	0.098	0.101	0.098	0.102
Na ₂ O, Sodium oxide (wt.%)	2.96	0.041	2.94	2.98	2.94	2.99
P ₂ O ₅ , Phosphorus(V) oxide (wt.%)	0.254	0.006	0.251	0.256	0.249	0.258
SiO ₂ , Silicon dioxide (wt.%)	73.70	0.299	73.59	73.82	73.46	73.95
SO ₃ , Sulphur trioxide (wt.%)	0.038	0.005	0.034	0.041	IND	IND
Thermogravimetry						
LOI ¹⁰⁰⁰ , Loss on ignition @1000°C (wt.%)	0.481	0.094	0.435	0.528	0.419	0.544
4-Acid Digestion						
Al, Aluminium (wt.%)	8.22	0.418	8.04	8.41	7.98	8.47
As, Arsenic (ppm)	5.33	1.16	4.72	5.95	4.86	5.80
Ba, Barium (ppm)	18.2	1.37	17.4	19.0	17.2	19.3
Be, Beryllium (ppm)	118	6	116	121	115	122
Bi, Bismuth (ppm)	2.20	0.126	2.15	2.26	2.09	2.32
Ca, Calcium (wt.%)	0.113	0.006	0.111	0.115	0.108	0.118
Cd, Cadmium (ppm)	1.54	0.19	1.46	1.61	1.46	1.62
Co, Cobalt (ppm)	0.96	0.062	0.93	0.99	0.89	1.03
Cr, Chromium (ppm)	20.8	4.2	19.1	22.5	19.3	22.3
Cs, Cesium (ppm)	64	2.8	62	65	62	65
Cu, Copper (ppm)	18.4	0.97	18.0	18.8	17.6	19.3
Dy, Dysprosium (ppm)	0.15	0.03	0.13	0.17	IND	IND
Er, Erbium (ppm)	0.048	0.004	0.045	0.051	IND	IND
Fe, Iron (wt.%)	0.839	0.033	0.826	0.853	0.820	0.859
Ga, Gallium (ppm)	16.1	1.19	15.6	16.7	15.7	16.6
Hf, Hafnium (ppm)	1.06	0.056	1.05	1.07	1.03	1.09
Ho, Holmium (ppm)	0.017	0.004	0.012	0.021	IND	IND
K, Potassium (wt.%)	1.93	0.074	1.90	1.97	1.90	1.97
La, Lanthanum (ppm)	0.36	0.07	0.32	0.39	0.30	0.41
Li, Lithium (wt.%)	0.985	0.031	0.970	1.000	0.969	1.000
Li ₂ O, Lithium oxide (wt.%)	2.12	0.067	2.09	2.15	2.09	2.15
Mg, Magnesium (wt.%)	0.011	0.001	0.010	0.012	0.010	0.012
Mn, Manganese (wt.%)	0.074	0.003	0.073	0.076	0.073	0.076
Mo, Molybdenum (ppm)	3.32	0.215	3.23	3.41	3.08	3.56

SI unit equivalents: ppm, parts per million \equiv mg/kg \equiv μ g/g \equiv 0.0001 wt.% \equiv 1000 ppb, parts per billion.

Note 1: intervals may appear asymmetric due to rounding.

Note 2: the number of decimal places quoted does not imply accuracy of the certified value to this level but are given to minimise rounding errors when calculating 2SD and 3SD windows.

Table 1 continued.

Constituent	Certified Value	SD	95% Confidence Limits		95% Tolerance Limits	
			Low	High	Low	High
4-Acid Digestion continued						
Na, Sodium (wt.%)	2.16	0.089	2.12	2.20	2.13	2.20
Nb, Niobium (ppm)	36.3	3.02	35.1	37.6	34.9	37.8
Nd, Neodymium (ppm)	0.28	0.08	0.22	0.35	IND	IND
Ni, Nickel (ppm)	10.8	0.42	10.6	11.0	10.3	11.3
P, Phosphorus (wt.%)	0.111	0.004	0.110	0.113	0.108	0.114
Pb, Lead (ppm)	10.9	0.76	10.4	11.3	10.4	11.3
Rb, Rubidium (ppm)	612	42	592	632	594	630
S, Sulphur (wt.%)	0.014	0.003	0.012	0.016	0.014	0.015
Sb, Antimony (ppm)	0.27	0.04	0.25	0.29	0.25	0.30
Sc, Scandium (ppm)	0.10	0.003	0.10	0.10	IND	IND
Sn, Tin (ppm)	84	6.8	81	87	81	87
Sr, Strontium (ppm)	25.5	2.6	24.3	26.7	24.4	26.7
Ta, Tantalum (ppm)	20.0	2.1	19.1	21.0	19.3	20.8
Th, Thorium (ppm)	0.26	0.03	0.24	0.28	0.24	0.28
Ti, Titanium (wt.%)	0.004	0.000	0.003	0.004	0.003	0.004
Tl, Thallium (ppm)	3.67	0.193	3.58	3.75	3.53	3.80
U, Uranium (ppm)	5.83	0.417	5.65	6.01	5.64	6.03
V, Vanadium (ppm)	1.16	0.27	1.02	1.29	0.99	1.32
W, Tungsten (ppm)	5.62	0.318	5.47	5.77	5.40	5.84
Y, Yttrium (ppm)	0.65	0.11	0.57	0.72	0.58	0.72
Zn, Zinc (ppm)	87	3.4	86	89	85	89
Zr, Zirconium (ppm)	11.4	1.3	10.8	12.1	10.7	12.2

SI unit equivalents: ppm, parts per million \equiv mg/kg \equiv μ g/g \equiv 0.0001 wt.% \equiv 1000 ppb, parts per billion.

Note 1: intervals may appear asymmetric due to rounding.

Note 2: the number of decimal places quoted does not imply accuracy of the certified value to this level but are given to minimise rounding errors when calculating 2SD and 3SD windows.

Table 2. Indicative Values for OREAS 753.

Constituent	Unit	Value	Constituent	Unit	Value	Constituent	Unit	Value
Peroxide Fusion ICP								
Ag	ppm	< 1	Lu	ppm	< 0.05	Se	ppm	4.22
As	ppm	6.22	Mg	wt.%	0.012	Si	wt.%	34.79
B	ppm	< 50	Na	wt.%	1.84	Tb	ppm	0.039
Cr	ppm	35.9	Ni	ppm	14.1	Te	ppm	0.77
Er	ppm	0.046	Pb	ppm	11.2	Th	ppm	0.30
Eu	ppm	< 0.05	Re	ppm	< 0.01	Ti	wt.%	< 0.01
Hf	ppm	1.03	S	wt.%	0.012	Tm	ppm	< 0.05
Ho	ppm	0.023	Sb	ppm	0.31	V	ppm	< 5
In	ppm	< 0.2	Sc	ppm	< 5	Yb	ppm	< 0.1

SI unit equivalents: ppm, parts per million \equiv mg/kg \equiv μ g/g \equiv 0.0001 wt.% \equiv 1000 ppb, parts per billion.

Note: the number of significant figures reported is not a reflection of the level of certainty of stated values. They are instead an artefact of ORE's in-house CRM-specific LIMS.

Table 2. Indicative Values continued.

Borate Fusion XRF								
As ₂ O ₃	ppm	< 10	MoO ₃	ppm	< 10	Ta ₂ O ₅	ppm	35.2
BaO	ppm	< 100	Nb ₂ O ₅	ppm	60	TiO ₂	wt.%	0.013
Cl	ppm	118	NiO	ppm	18.2	V ₂ O ₅	ppm	< 100
CoO	ppm	< 10	PbO	ppm	26.4	WO ₃	ppm	8.00
Cr ₂ O ₃	ppm	< 100	Sb ₂ O ₃	ppm	< 10	ZnO	ppm	112
CuO	ppm	36.7	SnO ₂	ppm	153	ZrO ₂	ppm	69
MgO	wt.%	0.030	SrO	ppm	61			
Thermogravimetry								
H ₂ O-	wt.%	0.261						
4-Acid Digestion								
Ag	ppm	0.123	Hg	ppm	< 2	Si	wt.%	35.03
B	ppm	6.55	In	ppm	0.010	Sm	ppm	0.14
Ce	ppm	0.58	Lu	ppm	< 0.01	Tb	ppm	0.031
Eu	ppm	< 0.05	Pr	ppm	0.099	Te	ppm	0.066
Gd	ppm	0.11	Re	ppm	< 0.002	Tm	ppm	< 0.05
Ge	ppm	0.30	Se	ppm	0.50	Yb	ppm	0.051

SI unit equivalents: ppm, parts per million \equiv mg/kg \equiv μ g/g \equiv 0.0001 wt.% \equiv 1000 ppb, parts per billion.

Note: the number of significant figures reported is not a reflection of the level of certainty of stated values. They are instead an artefact of ORE's in-house CRM-specific LIMS.

INTRODUCTION

OREAS reference materials are intended to provide a low cost method of evaluating and improving the quality of analysis of geological samples. To the geologist they provide a means of implementing quality control in analytical data sets generated in exploration from the grass roots level through to prospect evaluation, and in grade control at mining operations. To the analyst they provide an effective means of calibrating analytical equipment, assessing new techniques and routinely monitoring in-house procedures.

OREAS reference materials enable users to successfully achieve process control of these tasks because the observed variance from repeated analysis has its origin almost exclusively in the analytical process rather than the reference material itself.

SOURCE MATERIAL

OREAS 753 has been prepared from RC drill chip samples supplied from Core Lithium's Finnis Lithium Project located in the Northern Territory, Australia. The project area contains the Grants lithium pegmatite deposit, within the Bynoe Pegmatite Field. Lithium-Caesium-Tantalum (LCT) Type pegmatites in the Finnis area intrude Palaeoproterozoic metasediments of the Burrell Creek Formation. Lithium mineralisation typically occurs as coarse spodumene and accessory amblygonite with muscovite, quartz, albite and k-feldspar gangue.

COMMINUTION AND HOMOGENISATION PROCEDURES

The material constituting OREAS 753 was prepared in the following manner:

- Drying to constant mass at 105°C;
- Milling 100% minus 30 microns;
- Homogenisation;
- Packaging in 10g units in laminated foil pouches and 500g units in plastic wide-mouth jars.

ANALYTICAL PROGRAM

Twenty-four commercial analytical laboratories participated in the program to characterise the elements reported in Table 1. The following methods were employed:

- Sodium peroxide fusion with full suite elemental package by ICP-OES and/or MS finish (20 laboratories);
- Lithium borate fusion whole rock analysis package by X-ray fluorescence (19 laboratories);
- Thermogravimetry: Moisture at 105°C (2 laboratories as a part of their fusion package) and Loss on Ignition (LOI) at 1000°C (8 laboratories used a thermogravimetric analyser, 4 laboratories used conventional muffle furnace and 9 laboratories included LOI with their fusion package);
- 4-acid digestion for full suite elemental package by ICP-OES and MS finish (up to 24 laboratories depending on the element).

For the round robin program twelve 200g test units were taken at predetermined intervals during the bagging stage, immediately following homogenisation and are considered representative of the entire prepared batch. The six samples received by each laboratory were obtained by taking two 10g scoop splits from each of three separate 200g test units. This format enabled nested ANOVA treatment of the results to evaluate homogeneity, i.e. to ascertain whether between-unit variance is greater than within-unit variance.

Table 1 presents the 92 certified values (including Li in both elemental and oxide form for peroxide fusion and 4-acid digestion) together with their associated 1SD's, 95% confidence and tolerance limits, Table 2 shows 66 indicative values and Table 3 provides performance gate intervals for the certified values based on their pooled 1SD's. Tabulated results of all elements together with uncorrected means, medians, standard deviations, relative standard deviations and per cent deviation of lab means from the corrected mean of means (PDM³) are presented in the detailed certification data for this CRM (**OREAS 753 DataPack-1.0.190208_104216.xlsx**).

Results are also presented in scatter plots for Li₂O (wt.%) by peroxide fusion ICP and 4-acid digestion in Figure 1 and 2 respectively, together with ±3SD (magenta) and ±5% (yellow) control lines and certified value (green line). Accepted individual results are coloured blue and individual and dataset outliers are identified in red and violet, respectively.

STATISTICAL ANALYSIS

Certified Values, Standard Deviations, Confidence and Tolerance Limits have been determined for each analytical method following removal of individual and laboratory outliers (Table 1). Certified Values are the mean of means after outlier filtering. The 95% Confidence Limit is a measure of the reliability of the certified value, i.e. the narrower the Confidence Interval the greater the certainty in the Certified Value. It should not be used as a control limit for laboratory performance.

95% Confidence Limits are inversely proportional to the number of participating laboratories and inter-laboratory agreement. It is a measure of the reliability of the certified value. A 95% confidence interval indicates a 95% probability that the true value of the analyte under consideration lies between the upper and lower limits. *95% Confidence Limits should not be used as control limits for laboratory performance.*

Indicative (uncertified) values (Table 2) are provided where i) the number of laboratories reporting a particular analyte is insufficient (< 5) to support certification; ii) interlaboratory consensus is poor; or iii) a significant proportion of results are outlying or reported as less than detection limits.

Standard Deviation values (1SDs) are reported in Table 1. They provide an indication of a level of performance that might reasonably be expected from a laboratory being monitored by this CRM in a QA/QC program. They take into account errors attributable to measurement uncertainty and CRM variability. For an effective CRM the contribution of the latter should be negligible in comparison to measurement errors. The Standard Deviation values include all sources of measurement uncertainty: between-lab variance, within-run variance (precision errors) and CRM variability.

The SD for each analyte's certified value is calculated from the same filtered data set used to determine the certified value, i.e. after removal of all individual, lab dataset (batch) and 3SD outliers (single iteration). These outliers can only be removed after the absolute homogeneity of the CRM has been independently established, i.e. the outliers must be confidently deemed to be analytical rather than arising from inhomogeneity of the CRM. **The standard deviation is then calculated for each analyte from the pooled accepted analyses generated from the certification program.**

In the application of SD's in monitoring performance it is important to note that not all laboratories function at the same level of proficiency and that different methods in use at a particular laboratory have differing levels of precision. Each laboratory has its own inherent SD (for a specific concentration level and analyte-method pair) based on the analytical process and this SD is not directly related to the round robin program.

The majority of data generated in the round robin program was produced by a selection of world class laboratories. The SD's thus generated are more constrained than those that would be produced across a randomly selected group of laboratories. To produce more generally achievable SD's the 'pooled' SD's provided in this report include inter-lab bias. This 'one size fits all' approach may require revision at the discretion of the QC manager concerned following careful scrutiny of QC control charts.

Table 3 shows **Performance Gates** calculated for two and three standard deviations. As a guide these intervals may be regarded as warning or rejection for multiple 2SD outliers, or rejection for individual 3SD outliers in QC monitoring, although their precise application should be at the discretion of the QC manager concerned. A second method utilises a 5%

window calculated directly from the certified value. Standard deviation is also shown in relative percent for one, two and three relative standard deviations (1RSD, 2RSD and 3RSD) to facilitate an appreciation of the magnitude of these numbers and a comparison with the 5% window. Caution should be exercised when concentration levels approach lower limits of detection of the analytical methods employed as performance gates calculated from standard deviations tend to be excessively wide whereas those determined by the 5% method are too narrow. One approach used at commercial laboratories is to set the acceptance criteria at twice the detection level (DL) \pm 10%.

i.e. Certified Value \pm 10% \pm 2DL (adapted from Govett, 1983)

Table 3. Performance Gates for OREAS 753.

Constituent	Certified Value	Absolute Standard Deviations					Relative Standard Deviations			5% window	
		1SD	2SD Low	2SD High	3SD Low	3SD High	1RSD	2RSD	3RSD	Low	High
Peroxide Fusion ICP											
Al, wt. %	8.57	0.219	8.14	9.01	7.92	9.23	2.55%	5.10%	7.65%	8.14	9.00
Ba, ppm	18.7	1.73	15.3	22.2	13.6	23.9	9.21%	18.42%	27.63%	17.8	19.7
Be, ppm	120	7	107	133	100	140	5.46%	10.92%	16.39%	114	126
Bi, ppm	2.31	0.215	1.88	2.74	1.67	2.95	9.29%	18.58%	27.87%	2.19	2.43
Ca, wt. %	0.109	0.027	0.056	0.163	0.029	0.190	24.58%	49.16%	73.74%	0.104	0.115
Cd, ppm	1.52	0.149	1.22	1.82	1.07	1.97	9.80%	19.60%	29.40%	1.44	1.60
Ce, ppm	0.79	0.20	0.39	1.20	0.19	1.40	25.47%	50.93%	76.40%	0.75	0.83
Co, ppm	1.07	0.14	0.78	1.35	0.64	1.49	13.30%	26.60%	39.90%	1.01	1.12
Cs, ppm	62	4.2	54	70	49	75	6.77%	13.55%	20.32%	59	65
Cu, ppm	22.8	4.3	14.2	31.4	9.9	35.7	18.81%	37.63%	56.44%	21.7	24.0
Dy, ppm	0.18	0.03	0.11	0.24	0.08	0.28	18.54%	37.07%	55.61%	0.17	0.19
Fe, wt. %	0.871	0.046	0.779	0.963	0.733	1.009	5.29%	10.57%	15.86%	0.827	0.914
Ga, ppm	16.6	1.07	14.5	18.8	13.4	19.8	6.44%	12.89%	19.33%	15.8	17.5
Gd, ppm	0.14	0.03	0.08	0.21	0.04	0.24	23.36%	46.72%	70.09%	0.14	0.15
Ge, ppm	6.58	0.572	5.43	7.72	4.86	8.29	8.70%	17.40%	26.10%	6.25	6.90
K, wt. %	1.95	0.094	1.76	2.14	1.67	2.23	4.80%	9.61%	14.41%	1.85	2.05
La, ppm	0.37	0.06	0.26	0.48	0.20	0.54	15.39%	30.78%	46.17%	0.35	0.39
Li, wt. %	1.02	0.023	0.97	1.06	0.95	1.09	2.26%	4.52%	6.79%	0.97	1.07
Li ₂ O, wt. %	2.19	0.050	2.09	2.29	2.04	2.34	2.26%	4.52%	6.79%	2.08	2.30
Mn, wt. %	0.076	0.004	0.069	0.084	0.065	0.087	4.88%	9.75%	14.63%	0.072	0.080
Mo, ppm	3.71	0.60	2.51	4.92	1.90	5.52	16.23%	32.47%	48.70%	3.53	3.90
Nb, ppm	36.2	3.26	29.6	42.7	26.4	45.9	9.01%	18.03%	27.04%	34.4	38.0
Nd, ppm	0.26	0.07	0.13	0.40	0.06	0.46	25.40%	50.81%	76.21%	0.25	0.28
P, wt. %	0.103	0.009	0.086	0.121	0.077	0.129	8.37%	16.74%	25.11%	0.098	0.108
Pr, ppm	0.087	0.020	0.048	0.127	0.028	0.147	22.74%	45.47%	68.21%	0.083	0.092
Rb, ppm	618	22	574	661	553	683	3.50%	7.01%	10.51%	587	649
Sm, ppm	0.11	0.04	0.04	0.19	0.00	0.22	33.98%	67.97%	101.95%	0.10	0.12
Sn, ppm	135	5	126	144	121	149	3.46%	6.92%	10.38%	128	142
Sr, ppm	30.9	3.4	24.1	37.6	20.8	41.0	10.91%	21.82%	32.73%	29.3	32.4
Ta, ppm	19.8	1.36	17.1	22.5	15.7	23.9	6.85%	13.70%	20.55%	18.8	20.8

SI unit equivalents: ppm, parts per million \equiv mg/kg \equiv μ g/g \equiv 0.0001 wt. % \equiv 1000 ppb, parts per billion.

Note 1: intervals may appear asymmetric due to rounding.

Note 2: the number of decimal places quoted does not imply accuracy of the certified value to this level but are given to minimise rounding errors when calculating 2SD and 3SD windows.

Table 3. Performance Gates continued.

Constituent	Certified Value	Absolute Standard Deviations					Relative Standard Deviations			5% window	
		1SD	2SD Low	2SD High	3SD Low	3SD High	1RSD	2RSD	3RSD	Low	High
Peroxide Fusion ICP continued											
Tl, ppm	3.66	0.238	3.19	4.14	2.95	4.38	6.51%	13.02%	19.53%	3.48	3.85
U, ppm	6.15	0.524	5.10	7.20	4.58	7.72	8.52%	17.05%	25.57%	5.84	6.46
W, ppm	5.32	0.54	4.24	6.39	3.70	6.93	10.12%	20.23%	30.35%	5.05	5.58
Y, ppm	0.82	0.14	0.54	1.10	0.40	1.24	17.05%	34.11%	51.16%	0.78	0.86
Zn, ppm	88	6.8	74	101	67	108	7.78%	15.56%	23.34%	83	92
Zr, ppm	11.6	3.3	4.9	18.3	1.5	21.6	28.88%	57.76%	86.64%	11.0	12.1
Borate Fusion XRF											
Al ₂ O ₃ , wt. %	16.40	0.121	16.16	16.64	16.04	16.76	0.73%	1.47%	2.20%	15.58	17.22
CaO, wt. %	0.160	0.007	0.146	0.174	0.139	0.181	4.41%	8.83%	13.24%	0.152	0.168
Fe ₂ O ₃ , wt. %	1.25	0.021	1.21	1.29	1.19	1.32	1.65%	3.30%	4.95%	1.19	1.32
K ₂ O, wt. %	2.36	0.022	2.31	2.40	2.29	2.42	0.95%	1.89%	2.84%	2.24	2.47
MnO, wt. %	0.100	0.004	0.092	0.107	0.088	0.111	3.90%	7.81%	11.71%	0.095	0.105
Na ₂ O, wt. %	2.96	0.041	2.88	3.04	2.84	3.09	1.39%	2.77%	4.16%	2.81	3.11
P ₂ O ₅ , wt. %	0.254	0.006	0.242	0.265	0.237	0.270	2.22%	4.45%	6.67%	0.241	0.266
SiO ₂ , wt. %	73.70	0.299	73.11	74.30	72.81	74.60	0.41%	0.81%	1.22%	70.02	77.39
SO ₃ , wt. %	0.038	0.005	0.027	0.048	0.021	0.054	14.51%	29.03%	43.54%	0.036	0.039
Thermogravimetry											
LOI ¹⁰⁰⁰ , wt. %	0.481	0.094	0.294	0.669	0.200	0.763	19.49%	38.99%	58.48%	0.457	0.506
4-Acid Digestion											
Al, wt. %	8.22	0.418	7.39	9.06	6.97	9.48	5.09%	10.18%	15.26%	7.81	8.63
As, ppm	5.33	1.16	3.01	7.66	1.85	8.82	21.76%	43.53%	65.29%	5.07	5.60
Ba, ppm	18.2	1.37	15.5	21.0	14.1	22.4	7.54%	15.08%	22.62%	17.3	19.1
Be, ppm	118	6	106	130	101	136	5.00%	10.00%	14.99%	112	124
Bi, ppm	2.20	0.126	1.95	2.46	1.83	2.58	5.70%	11.40%	17.10%	2.09	2.31
Ca, wt. %	0.113	0.006	0.101	0.125	0.095	0.131	5.38%	10.77%	16.15%	0.107	0.119
Cd, ppm	1.54	0.19	1.17	1.91	0.98	2.10	12.10%	24.20%	36.31%	1.46	1.62
Co, ppm	0.96	0.062	0.84	1.09	0.78	1.15	6.45%	12.90%	19.34%	0.92	1.01
Cr, ppm	20.8	4.2	12.3	29.3	8.1	33.5	20.37%	40.74%	61.12%	19.8	21.8
Cs, ppm	64	2.8	58	69	55	72	4.46%	8.92%	13.38%	60	67
Cu, ppm	18.4	0.97	16.5	20.4	15.5	21.3	5.29%	10.57%	15.86%	17.5	19.3
Dy, ppm	0.15	0.03	0.10	0.21	0.07	0.24	18.70%	37.41%	56.11%	0.15	0.16
Er, ppm	0.048	0.004	0.039	0.057	0.035	0.061	9.20%	18.40%	27.59%	0.046	0.050
Fe, wt. %	0.839	0.033	0.773	0.906	0.739	0.940	3.98%	7.96%	11.94%	0.797	0.881
Ga, ppm	16.1	1.19	13.8	18.5	12.6	19.7	7.40%	14.79%	22.19%	15.3	16.9
Hf, ppm	1.06	0.056	0.95	1.17	0.89	1.23	5.26%	10.52%	15.79%	1.01	1.11
Ho, ppm	0.017	0.004	0.008	0.026	0.004	0.030	26.04%	52.07%	78.11%	0.016	0.018
K, wt. %	1.93	0.074	1.79	2.08	1.71	2.16	3.82%	7.65%	11.47%	1.84	2.03
La, ppm	0.36	0.07	0.22	0.49	0.16	0.55	18.57%	37.14%	55.71%	0.34	0.37
Li, wt. %	0.985	0.031	0.922	1.047	0.891	1.078	3.17%	6.35%	9.52%	0.935	1.034
Li ₂ O, wt. %	2.12	0.067	1.98	2.25	1.92	2.32	3.17%	6.35%	9.52%	2.01	2.23
Mg, wt. %	0.011	0.001	0.008	0.014	0.007	0.015	12.64%	25.28%	37.92%	0.011	0.012

SI unit equivalents: ppm, parts per million \equiv mg/kg \equiv μ g/g \equiv 0.0001 wt. % \equiv 1000 ppb, parts per billion.

Note 1: intervals may appear asymmetric due to rounding.

Note 2: the number of decimal places quoted does not imply accuracy of the certified value to this level but are given to minimise rounding errors when calculating 2SD and 3SD windows.

Table 3. Performance Gates continued.

Constituent	Certified Value	Absolute Standard Deviations					Relative Standard Deviations			5% window	
		1SD	2SD Low	2SD High	3SD Low	3SD High	1RSD	2RSD	3RSD	Low	High
4-Acid Digestion continued											
Mn, wt.%	0.074	0.003	0.068	0.081	0.065	0.084	4.30%	8.61%	12.91%	0.071	0.078
Mo, ppm	3.32	0.215	2.89	3.75	2.68	3.97	6.46%	12.93%	19.39%	3.16	3.49
Na, wt.%	2.16	0.089	1.98	2.34	1.89	2.43	4.12%	8.24%	12.36%	2.05	2.27
Nb, ppm	36.3	3.02	30.3	42.4	27.3	45.4	8.31%	16.62%	24.93%	34.5	38.2
Nd, ppm	0.28	0.08	0.12	0.45	0.03	0.54	29.32%	58.65%	87.97%	0.27	0.30
Ni, ppm	10.8	0.42	9.9	11.6	9.5	12.1	3.94%	7.87%	11.81%	10.3	11.3
P, wt.%	0.111	0.004	0.104	0.119	0.101	0.122	3.26%	6.53%	9.79%	0.106	0.117
Pb, ppm	10.9	0.76	9.3	12.4	8.6	13.1	6.97%	13.95%	20.92%	10.3	11.4
Rb, ppm	612	42	528	696	486	738	6.85%	13.69%	20.54%	581	643
S, wt.%	0.014	0.003	0.009	0.019	0.006	0.022	18.43%	36.86%	55.29%	0.013	0.015
Sb, ppm	0.27	0.04	0.19	0.36	0.14	0.40	15.90%	31.81%	47.71%	0.26	0.29
Sc, ppm	0.10	0.003	0.10	0.11	0.09	0.11	2.70%	5.40%	8.11%	0.10	0.11
Sn, ppm	84	6.8	71	98	64	105	8.08%	16.16%	24.24%	80	88
Sr, ppm	25.5	2.6	20.4	30.7	17.8	33.3	10.12%	20.24%	30.35%	24.2	26.8
Ta, ppm	20.0	2.1	15.9	24.2	13.8	26.3	10.39%	20.78%	31.17%	19.0	21.0
Th, ppm	0.26	0.03	0.20	0.32	0.17	0.36	12.08%	24.15%	36.23%	0.25	0.27
Ti, wt.%	0.004	0.000	0.003	0.004	0.003	0.004	5.85%	11.70%	17.55%	0.003	0.004
Tl, ppm	3.67	0.193	3.28	4.05	3.09	4.25	5.26%	10.52%	15.79%	3.48	3.85
U, ppm	5.83	0.417	5.00	6.67	4.58	7.09	7.15%	14.30%	21.45%	5.54	6.13
V, ppm	1.16	0.27	0.61	1.70	0.34	1.97	23.54%	47.07%	70.61%	1.10	1.21
W, ppm	5.62	0.318	4.98	6.26	4.67	6.57	5.66%	11.31%	16.97%	5.34	5.90
Y, ppm	0.65	0.11	0.44	0.86	0.33	0.96	16.24%	32.48%	48.73%	0.62	0.68
Zn, ppm	87	3.4	80	94	77	98	3.94%	7.88%	11.82%	83	92
Zr, ppm	11.4	1.3	8.9	14.0	7.6	15.3	11.29%	22.58%	33.87%	10.9	12.0

SI unit equivalents: ppm, parts per million \equiv mg/kg \equiv μ g/g \equiv 0.0001 wt.% \equiv 1000 ppb, parts per billion.

Note 1: intervals may appear asymmetric due to rounding.

Note 2: the number of decimal places quoted does not imply accuracy of the certified value to this level but are given to minimise rounding errors when calculating 2SD and 3SD windows.

Tolerance Limits (ISO Guide 3207) were determined using an analysis of precision errors method and are considered a conservative estimate of true homogeneity. The meaning of tolerance limits may be illustrated for lithium oxide (Li₂O) by peroxide fusion ICP, where 99% of the time (1- α =0.99) at least 95% of subsamples (ρ =0.95) will have concentrations lying between 2.16 and 2.22 wt.%. Put more precisely, this means that if the same number of subsamples were taken and analysed in the same manner repeatedly, 99% of the tolerance intervals so constructed would cover at least 95% of the total population, and 1% of the tolerance intervals would cover less than 95% of the total population (ISO Guide 35). *Please note that tolerance limits pertain to the homogeneity of the CRM only and should not be used as control limits for laboratory performance.*

ANOVA Study

The homogeneity of OREAS 753 has also been evaluated in an ANOVA study for all certified analytes occurring at least 20 times the lower limit of detection. No significant p -values were found indicating that no evidence exists that between-unit variance is greater than within-unit variance.

It is important to note that ANOVA is not an absolute measure of homogeneity. Rather, it establishes whether or not the analytes are distributed in a similar manner throughout the packaging run of OREAS 753 and whether the variance between two subsamples from the same unit is statistically distinguishable to the variance from two subsamples taken from any two separate units. A reference material therefore, can possess poor absolute homogeneity yet still pass a relative homogeneity test if the within-unit heterogeneity is large and similar across all units.

Based on the statistical analysis of the results of the inter-laboratory certification program it can be concluded that OREAS 753 is sufficiently homogenous and is fit-for-purpose as a certified reference material (see 'Intended Use' below).

PARTICIPATING LABORATORIES

1. AGAT Laboratories, Mississauga, Ontario, Canada
2. Alex Stewart International, Mendoza, Argentina
3. ALS, Brisbane, QLD, Australia
4. ALS, Lima, Peru
5. ALS, Loughrea, Galway, Ireland
6. ALS, Perth, WA, Australia
7. ALS, Vancouver, BC, Canada
8. American Assay Laboratories, Sparks, Nevada, USA
9. Bureau Veritas Commodities Canada Ltd, Vancouver, BC, Canada
10. Bureau Veritas Geoanalytical, Adelaide, SA, Australia
11. Bureau Veritas Geoanalytical, Perth, WA, Australia
12. Inspectorate (BV), Lima, Peru
13. Intertek Genalysis, Perth, WA, Australia
14. Intertek Testing Services Philippines, Cupang, Muntinlupa, Philippines
15. Nagrom, Perth, WA, Australia
16. Ontario Geological Survey, Sudbury, Ontario, Canada
17. PT Geoservices Ltd, Cikarang, Jakarta Raya, Indonesia
18. Reminex Centre de Recherche, Marrakesh, Marrakesh-Safi, Morocco
19. Saskatchewan Research Council, Saskatoon, Saskatchewan, Canada
20. SGS, Randfontein, Gauteng, South Africa
21. SGS Australia Mineral Services, Perth, WA, Australia
22. SGS Canada Inc., Vancouver, BC, Canada
23. SGS Lakefield Research Ltd, Lakefield, Ontario, Canada
24. UIS Analytical Services, Centurion, South Africa

Please note: Above numbered alphabetical list of participating laboratories does not reflect the Lab ID numbering on the scatter plots below.

Figure 1. Li₂O by PF ICP in OREAS 753

SPC.1422.RR1.OREAS 753.4.PF ICP.Li2O.Lab.190208.121710.SN

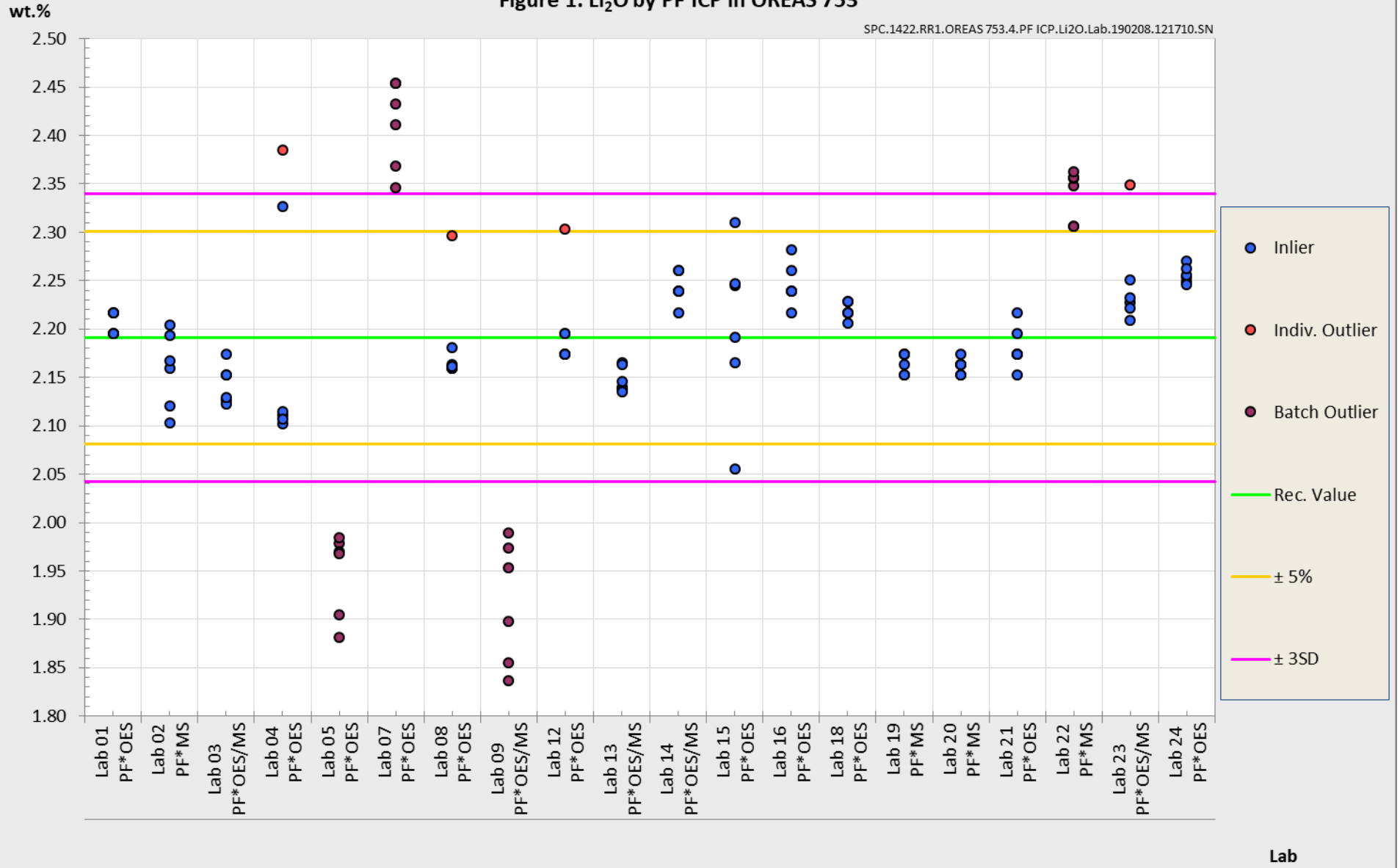
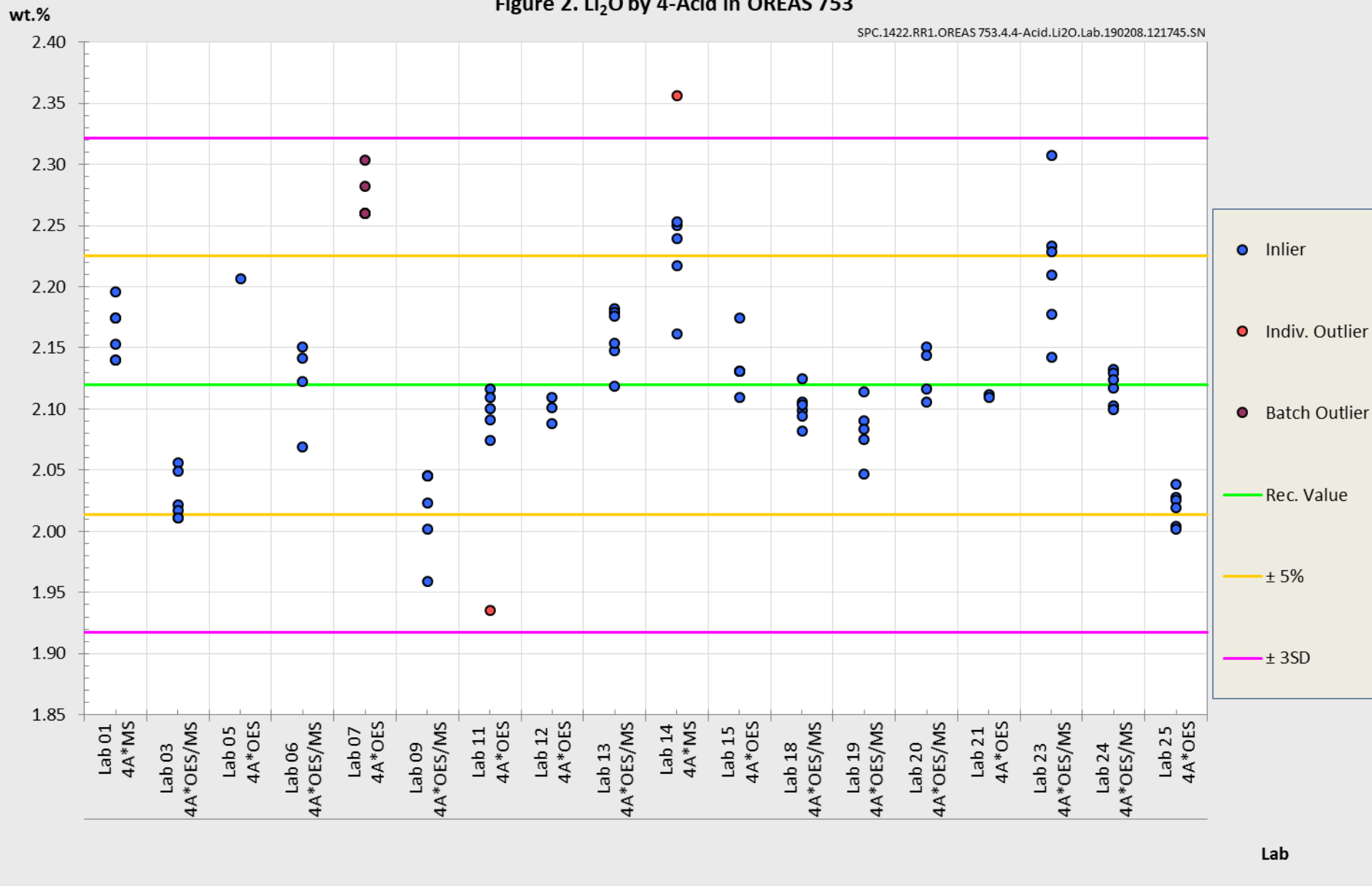


Figure 2. Li₂O by 4-Acid in OREAS 753

SPC.1422.RR1.OREAS 753.4.4-Acid.Li2O.Lab.190208.121745.SN



PREPARER AND SUPPLIER

Certified reference material OREAS 753 was prepared, certified and supplied by:



ORE Research & Exploration Pty Ltd
37A Hosie Street
Bayswater North VIC 3153
AUSTRALIA

Tel: +613-9729 0333
Fax: +613-9729 8338
Web: www.ore.com.au
Email: info@ore.com.au

It is packaged in 10g units in laminated foil packets and in 500g units in wide-mouth plastic jars.

METROLOGICAL TRACEABILITY

The analytical samples were selected in a manner to represent the entire batch of prepared CRM. This 'representivity' was maintained in each submitted laboratory sample batch and ensures the user that the data is traceable from sample selection through to the analytical results that underlie the consensus values. Each analytical data set has been validated by its assayer through the inclusion of internal reference materials and QC checks during analysis.

The laboratories were chosen on the basis of their competence (from past performance in inter-laboratory programs undertaken by ORE Pty Ltd) for a particular analytical method, analyte or analyte suite, and sample matrix. Most of these laboratories have and maintain ISO 17025 accreditation. The certified values presented in this report are calculated from the means of accepted data following robust statistical treatment as detailed in this report.

Guide ISO/TR 16476:2016, section 5.3.1 describes metrological traceability in reference materials as it pertains to the transformation of the measurand. In this section it states, *"Although the determination of the property value itself can be made traceable to appropriate units through, for example, calibration of the measurement equipment used, steps like the transformation of the sample from one physical (chemical) state to another cannot. Such transformations may only be compared with a reference (when available), or among themselves. For some transformations, reference methods have been defined and may be used in certification projects to evaluate the uncertainty associated with such a transformation. In other cases, **only a comparison among different laboratories using the same method is possible. In this case, certification takes place on the basis of agreement among independent measurement results** (see ISO Guide 35:2006, Clause 10)."*

COMMUTABILITY

The measurements of the results that underlie the certified values contained in this report were undertaken by methods involving pre-treatment (digestion/fusion) of the sample. This served to reduce the sample to a simple and well understood form permitting calibration using simple solutions of the CRM. Due to these methods being well understood and highly effective, commutability is not an issue for this CRM. All OREAS CRMs are sourced from natural ore minerals meaning they will display similar behaviour as routine 'field' samples in the relevant measurement process. Care should be taken to ensure 'matrix matching' as close as practically achievable. The matrix and mineralisation style of the CRM is described in the 'Source Material' section and users should select appropriate CRMs matching these attributes to their field samples.

INTENDED USE

OREAS 753 is intended to cover all activities needed to produce a measurement result. This includes extraction, possible separation steps and the actual measurement process (the signal producing step). OREAS 753 may be used to calibrate the entire procedure by producing a pure substance CRM transformed into a calibration solution.

OREAS 753 is intended for the following uses:

- For the monitoring of laboratory performance in the analysis of analytes reported in Table 1 in geological samples;
- For the verification of analytical methods for analytes reported in Table 1;
- For the calibration of instruments used in the determination of the concentration of analytes reported in Table 1.

STABILITY AND STORAGE INSTRUCTIONS

OREAS 752 was sourced from Li-rich pegmatite ore and is low in reactive sulphides. In its unopened state and under normal conditions of storage it has a shelf life beyond ten years. Its stability will be monitored at regular intervals and purchasers notified if any changes are observed.

INSTRUCTIONS FOR CORRECT USE

The certified values for lithium borate fusion XRF and for LOI are on a 'dry sample' basis whilst all other certified values are reported on a 'sample as received' basis.

HANDLING INSTRUCTIONS

Fine powders pose a risk to eyes and lungs and therefore standard precautions such as the use of safety glasses and dust masks are advised.

LEGAL NOTICE

Ore Research & Exploration Pty Ltd has prepared and statistically evaluated the property values of this reference material to the best of its ability. The Purchaser by receipt hereof releases and indemnifies Ore Research & Exploration Pty Ltd from and against all liability and costs arising from the use of this material and information.

DOCUMENT HISTORY

Revision No.	Date	Changes applied
2	22 nd February 2019	Table of content got 'QMS ACCREDITED' link added.
1	11 th February 2019	Minor change in the Source Material section.
0	11 th February 2019	First publication.

QMS ACCREDITED

ORE Pty Ltd is accredited to ISO 9001:2015 by Lloyd's Register Quality Assurance Ltd for its quality management system including development, manufacturing, certification and supply of CRMs.



CERTIFYING OFFICER

A handwritten signature in black ink, appearing to read 'SHP', is positioned above the name of the certifying officer.

22nd February, 2019

Craig Hamlyn (B.Sc. Hons - Geology), Technical Manager - ORE P/L

REFERENCES

Govett, G.J.S. (1983), ed. Handbook of Exploration Geochemistry, Volume 2: Statistics and Data Analysis in Geochemical Prospecting (Variations of accuracy and precision).

ISO Guide 30 (2015), Terms and definitions used in connection with reference materials.

ISO Guide 31 (2015), Reference materials – Contents of certificates and labels.

ISO Guide 3207 (1975), Statistical interpretation of data - Determination of a statistical tolerance interval.

ISO Guide 35 (2017), Certification of reference materials - General and statistical principals.