

**CERTIFICATE OF ANALYSIS FOR**

**CERTIFIED REFERENCE MATERIAL**

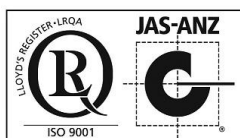
**OREAS 931c**

**Copper Ore**

**(CSA Mine, north-west Cobar, central western New South  
Wales, Australia)**



Accredited for compliance with ISO 17034



COA-1879-OREAS931c-R0 BUP-70-10-01 Ver:2.0	18-Dec-2024
---	-------------

**Table 1. Certified Values, Uncertainty & Tolerance Intervals for multi-elements by 4-acid digestion and aqua regia digestion in OREAS 931c.**

Constituent	Certified Value <sup>†</sup>	95 % Expanded Uncertainty		95 % Tolerance Limits	
		Low	High	Low	High
<b>4-Acid Digestion</b>					
Ag, Silver (ppm)	15.3	14.9	15.7	15.0	15.6
Al, Aluminium (wt.%)	5.37	5.25	5.49	5.28	5.46
As, Arsenic (ppm)	53	51	54	51	54
Be, Beryllium (ppm)	1.93	1.86	2.00	1.86	2.00
Bi, Bismuth (ppm)	217	208	225	212	221
Ca, Calcium (wt.%)	0.081	0.080	0.083	0.079	0.083
Cd, Cadmium (ppm)	0.61	0.55	0.67	0.55	0.67
Ce, Cerium (ppm)	64	61	67	63	66
Co, Cobalt (ppm)	31.5	30.3	32.6	30.9	32.1
Cr, Chromium (ppm)	67	63	70	64	69
Cs, Caesium (ppm)	4.99	4.79	5.20	4.89	5.10
Cu, Copper (wt.%)	3.95	3.87	4.02	3.90	4.00
Dy, Dysprosium (ppm)	2.89	2.50	3.27	2.75	3.02
Er, Erbium (ppm)	1.44	1.29	1.59	1.37	1.50
Eu, Europium (ppm)	1.04	0.97	1.10	1.00	1.08
Fe, Iron (wt.%)	8.49	8.32	8.66	8.34	8.63
Ga, Gallium (ppm)	16.8	16.1	17.5	16.3	17.3
Gd, Gadolinium (ppm)	4.31	3.99	4.63	4.19	4.43
Ge, Germanium (ppm)	0.22	0.18	0.27	0.21	0.24
Hf, Hafnium (ppm)	1.96	1.85	2.07	1.87	2.05
Ho, Holmium (ppm)	0.52	0.47	0.57	0.51	0.53
In, Indium (ppm)	3.24	3.10	3.37	3.15	3.32
K, Potassium (wt.%)	2.14	2.09	2.19	2.10	2.18
La, Lanthanum (ppm)	33.0	31.0	35.0	32.1	33.8
Li, Lithium (ppm)	19.3	18.7	19.9	18.8	19.8
Lu, Lutetium (ppm)	0.22	0.19	0.25	0.19	0.24
Mg, Magnesium (wt.%)	0.363	0.354	0.373	0.356	0.371
Mn, Manganese (wt.%)	0.017	0.017	0.018	0.017	0.018
Mo, Molybdenum (ppm)	4.99	4.81	5.17	4.81	5.17
Na, Sodium (wt.%)	0.071	0.068	0.074	0.070	0.073
Nb, Niobium (ppm)	3.09	2.73	3.46	2.91	3.27
Nd, Neodymium (ppm)	30.6	29.1	32.1	29.9	31.3
Ni, Nickel (ppm)	11.8	11.1	12.5	11.2	12.5
P, Phosphorus (wt.%)	0.029	0.028	0.030	0.028	0.030
Pb, Lead (ppm)	127	123	130	125	129

SI unit equivalents: ppm (parts per million;  $1 \times 10^{-6}$ )  $\equiv$  mg/kg; wt.% (weight per cent)  $\equiv$  % (mass fraction).

<sup>†</sup>The operationally defined measurand meets the requirements of ISO 17034 [9] and all participating laboratories comply with the requirements of ISO 17025 [8].

Note: intervals may appear asymmetric due to rounding.

IND = indeterminate (due to limited reading resolution of the methods employed).

Table 1 continued.

Constituent	Certified Value <sup>†</sup>	95 % Expanded Uncertainty		95 % Tolerance Limits	
		Low	High	Low	High
<b>4-Acid Digestion continued</b>					
Pr, Praseodymium (ppm)	8.04	7.48	8.59	7.80	8.27
Rb, Rubidium (ppm)	125	121	130	122	128
Re, Rhenium (ppm)	< 0.002	IND	IND	IND	IND
S, Sulphur (wt.%)	4.29	4.20	4.38	4.22	4.37
Sb, Antimony (ppm)	3.74	3.54	3.95	3.55	3.94
Sc, Scandium (ppm)	9.89	9.38	10.39	9.55	10.22
Se, Selenium (ppm)	46.3	43.4	49.1	44.9	47.6
Sm, Samarium (ppm)	5.52	5.03	6.01	5.39	5.64
Sn, Tin (ppm)	37.3	35.8	38.7	36.5	38.0
Sr, Strontium (ppm)	39.1	37.6	40.7	38.2	40.1
Ta, Tantalum (ppm)	0.21	0.17	0.25	0.19	0.23
Tb, Terbium (ppm)	0.52	0.46	0.57	0.49	0.55
Te, Tellurium (ppm)	0.15	0.13	0.18	IND	IND
Th, Thorium (ppm)	10.6	10.0	11.2	10.2	11.0
Ti, Titanium (wt.%)	0.158	0.149	0.167	0.154	0.162
Tl, Thallium (ppm)	0.80	0.76	0.83	0.77	0.83
Tm, Thulium (ppm)	0.20	0.17	0.22	IND	IND
U, Uranium (ppm)	3.70	3.52	3.87	3.58	3.81
V, Vanadium (ppm)	158	154	162	155	161
W, Tungsten (ppm)	18.3	17.3	19.4	17.9	18.8
Y, Yttrium (ppm)	14.3	13.5	15.1	13.8	14.8
Yb, Ytterbium (ppm)	1.42	1.29	1.54	1.29	1.54
Zn, Zinc (ppm)	286	279	293	281	291
Zr, Zirconium (ppm)	68	65	71	66	69
<b>Aqua Regia Digestion</b>					
Ag, Silver (ppm)	15.2	14.8	15.7	14.8	15.7
Al, Aluminium (wt.%)	0.783	0.747	0.819	0.767	0.799
As, Arsenic (ppm)	52	50	54	50	53
Au, Gold (ppm)	< 0.02	IND	IND	IND	IND
B, Boron (ppm)	< 10	IND	IND	IND	IND
Be, Beryllium (ppm)	0.42	0.39	0.45	0.40	0.44
Bi, Bismuth (ppm)	212	203	221	209	216
Ca, Calcium (wt.%)	0.078	0.077	0.080	0.076	0.080
Cd, Cadmium (ppm)	0.59	0.54	0.64	0.55	0.63
Ce, Cerium (ppm)	43.5	41.1	46.0	41.6	45.4

SI unit equivalents: ppm (parts per million;  $1 \times 10^{-6}$ )  $\equiv$  mg/kg; wt.% (weight per cent)  $\equiv$  % (mass fraction).

Note: intervals may appear asymmetric due to rounding.

<sup>†</sup>The operationally defined measurand meets the requirements of ISO 17034 [9] and all participating laboratories comply with the requirements of ISO 17025 [8].

IND = indeterminate (due to limited reading resolution of the methods employed. For practical purposes the 95% Expanded Uncertainty can be set between zero and a two times multiple of the upper bound/non-detect limit value).

Table 1 continued.

Constituent	Certified Value <sup>†</sup>	95 % Expanded Uncertainty		95 % Tolerance Limits	
		Low	High	Low	High
<b>Aqua Regia Digestion continued</b>					
Co, Cobalt (ppm)	30.7	29.2	32.3	29.9	31.5
Cr, Chromium (ppm)	17.4	16.1	18.6	16.0	18.7
Cs, Caesium (ppm)	1.85	1.72	1.99	1.76	1.94
Cu, Copper (wt.%)	3.89	3.80	3.97	3.84	3.93
Fe, Iron (wt.%)	8.18	7.96	8.40	8.06	8.30
Ga, Gallium (ppm)	3.17	2.98	3.36	2.98	3.35
Ge, Germanium (ppm)	0.20	0.15	0.24	0.18	0.21
Hf, Hafnium (ppm)	0.32	0.30	0.34	0.30	0.34
Hg, Mercury (ppm)	0.10	0.08	0.12	0.10	0.11
In, Indium (ppm)	3.15	3.01	3.28	3.05	3.24
K, Potassium (wt.%)	0.236	0.224	0.249	0.227	0.245
La, Lanthanum (ppm)	20.0	18.4	21.7	19.2	20.9
Li, Lithium (ppm)	2.40	2.13	2.66	2.24	2.55
Mg, Magnesium (wt.%)	0.132	0.123	0.141	0.128	0.136
Mn, Manganese (wt.%)	0.015	0.014	0.015	0.014	0.015
Mo, Molybdenum (ppm)	4.79	4.54	5.04	4.62	4.96
Na, Sodium (wt.%)	0.011	0.010	0.012	IND	IND
Nb, Niobium (ppm)	< 0.05	IND	IND	IND	IND
Ni, Nickel (ppm)	9.14	8.42	9.86	8.80	9.48
P, Phosphorus (wt.%)	0.024	0.023	0.025	0.023	0.024
Pb, Lead (ppm)	114	109	118	111	116
Rb, Rubidium (ppm)	15.5	14.7	16.4	15.0	16.0
Re, Rhenium (ppm)	0.001	0.001	0.001	IND	IND
S, Sulphur (wt.%)	4.28	4.17	4.39	4.21	4.35
Sb, Antimony (ppm)	2.51	2.27	2.75	2.37	2.65
Sc, Scandium (ppm)	1.93	1.82	2.05	1.82	2.05
Se, Selenium (ppm)	44.5	41.7	47.2	43.2	45.8
Sn, Tin (ppm)	33.7	32.3	35.2	33.0	34.4
Sr, Strontium (ppm)	11.5	10.4	12.6	11.2	11.8
Ta, Tantalum (ppm)	< 0.01	IND	IND	IND	IND
Tb, Terbium (ppm)	0.33	0.28	0.39	0.31	0.35
Te, Tellurium (ppm)	0.14	0.11	0.16	IND	IND
Th, Thorium (ppm)	7.25	6.91	7.59	6.98	7.51
Ti, Titanium (wt.%)	0.005	0.005	0.005	0.005	0.005
Tl, Thallium (ppm)	0.14	0.13	0.16	0.13	0.16

SI unit equivalents: ppm (parts per million;  $1 \times 10^{-6}$ )  $\equiv$  mg/kg; wt.% (weight per cent)  $\equiv$  % (mass fraction).

Note: intervals may appear asymmetric due to rounding.

<sup>†</sup>The operationally defined measurand meets the requirements of ISO 17034 [9] and all participating laboratories comply with the requirements of ISO 17025 [8].

IND = indeterminate (due to limited reading resolution of the methods employed. For practical purposes the 95% Expanded Uncertainty can be set between zero and a two times multiple of the upper bound/non-detect limit value).

**Table 1 continued.**

Constituent	Certified Value <sup>†</sup>	95 % Expanded Uncertainty		95 % Tolerance Limits	
		Low	High	Low	High
<b>Aqua Regia Digestion continued</b>					
U, Uranium (ppm)	2.06	1.95	2.18	2.01	2.12
V, Vanadium (ppm)	20.9	19.6	22.1	19.7	22.1
W, Tungsten (ppm)	14.1	13.0	15.2	13.7	14.5
Y, Yttrium (ppm)	5.70	5.47	5.94	5.53	5.88
Yb, Ytterbium (ppm)	0.59	0.54	0.63	IND	IND
Zn, Zinc (ppm)	272	264	281	267	277
Zr, Zirconium (ppm)	10.9	10.2	11.6	10.6	11.2

SI unit equivalents: ppm (parts per million;  $1 \times 10^{-6}$ )  $\equiv$  mg/kg; wt.% (weight per cent)  $\equiv$  % (mass fraction).

Note: intervals may appear asymmetric due to rounding.

<sup>†</sup>The operationally defined measurand meets the requirements of ISO 17034 [9] and all participating laboratories comply with the requirements of ISO 17025 [8].

IND = indeterminate (due to limited reading resolution of the methods employed. For practical purposes the 95% Expanded Uncertainty can be set between zero and a two times multiple of the upper bound/non-detect limit value).

**Table 2. Certified Values, Uncertainty & Tolerance Intervals for other measurands in OREAS 931c.**

Constituent	Certified Value	95 % Expanded Uncertainty		95 % Tolerance Limits	
		Low	High	Low	High
<b>Borate Fusion XRF</b>					
Al <sub>2</sub> O <sub>3</sub> , Aluminium(III) oxide (wt.%)	10.33	10.20	10.45	10.22	10.43
BaO, Barium oxide (wt.%)	0.187	0.177	0.197	0.184	0.190
CaO, Calcium oxide (wt.%)	0.109	0.097	0.121	IND	IND
Co, Cobalt (ppm)	< 100	IND	IND	IND	IND
Cr <sub>2</sub> O <sub>3</sub> , Chromium(III) oxide (ppm)	151	117	186	IND	IND
Cu, Copper (wt.%)	3.91	3.84	3.98	3.85	3.97
Fe <sub>2</sub> O <sub>3</sub> , Iron(III) oxide (wt.%)	12.23	12.11	12.35	12.14	12.33
Hf, Hafnium (ppm)	< 80	IND	IND	IND	IND
K <sub>2</sub> O, Potassium oxide (wt.%)	2.60	2.56	2.64	2.56	2.64
MgO, Magnesium oxide (wt.%)	0.619	0.589	0.649	0.601	0.638
Mo, Molybdenum (ppm)	< 50	IND	IND	IND	IND
Na <sub>2</sub> O, Sodium oxide (wt.%)	0.111	0.081	0.140	IND	IND
Ni, Nickel (ppm)	< 100	IND	IND	IND	IND
P <sub>2</sub> O <sub>5</sub> , Phosphorus(V) oxide (wt.%)	0.065	0.060	0.070	0.062	0.068
Rb, Rubidium (ppm)	97	61	134	IND	IND
Sb, Antimony (ppm)	< 50	IND	IND	IND	IND
SiO <sub>2</sub> , Silicon dioxide (wt.%)	63.22	62.67	63.78	62.89	63.55
SO <sub>3</sub> , Sulphur trioxide (wt.%)	10.56	9.88	11.24	10.38	10.74
SrO, Strontium oxide (ppm)	< 120	IND	IND	IND	IND
TiO <sub>2</sub> , Titanium dioxide (wt.%)	0.426	0.407	0.444	0.410	0.441
V, Vanadium (ppm)	137	102	171	IND	IND

SI unit equivalents: ppm (parts per million;  $1 \times 10^{-6}$ )  $\equiv$  mg/kg; wt.% (weight per cent)  $\equiv$  % (mass fraction).

Note: intervals may appear asymmetric due to rounding.

IND = indeterminate (due to limited reading resolution of the methods employed).

Table 1 continued.

Constituent	Certified Value	95 % Expanded Uncertainty		95 % Tolerance Limits	
		Low	High	Low	High
<b>Borate Fusion XRF continued</b>					
Zn, Zinc (ppm)	280	238	322	267	292
Zr, Zirconium (ppm)	101	98	103	IND	IND
<b>Thermogravimetry</b>					
LOI <sup>1000</sup> , Loss On Ignition @1000 °C (wt.%)	4.67	4.45	4.89	4.59	4.76
<b>Borate / Peroxide Fusion ICP</b>					
Al, Aluminium (wt.%)	5.42	5.33	5.51	5.37	5.47
As, Arsenic (ppm)	55	50	59	53	56
Ba, Barium (wt.%)	0.165	0.161	0.169	0.163	0.167
Be, Beryllium (ppm)	2.00	1.75	2.25	IND	IND
Bi, Bismuth (ppm)	219	208	230	212	226
Ca, Calcium (wt.%)	0.085	0.074	0.095	IND	IND
Cd, Cadmium (ppm)	< 10	IND	IND	IND	IND
Ce, Cerium (ppm)	70	67	74	67	74
Co, Cobalt (ppm)	32.1	30.6	33.5	31.0	33.1
Cr <sub>2</sub> O <sub>3</sub> , Chromium(III) oxide (ppm)	111	105	117	108	114
Cs, Caesium (ppm)	5.19	4.78	5.59	4.95	5.42
Cu, Copper (wt.%)	3.89	3.81	3.98	3.84	3.95
Dy, Dysprosium (ppm)	4.09	3.78	4.41	3.90	4.28
Er, Erbium (ppm)	2.32	2.06	2.57	2.21	2.43
Eu, Europium (ppm)	1.12	0.99	1.25	1.05	1.18
Fe, Iron (wt.%)	8.55	8.42	8.68	8.46	8.64
Ga, Gallium (ppm)	17.1	15.9	18.4	16.1	18.2
Gd, Gadolinium (ppm)	4.78	4.33	5.23	4.55	5.01
Ge, Germanium (ppm)	2.07	1.85	2.29	IND	IND
Hf, Hafnium (ppm)	3.02	2.45	3.58	2.78	3.25
Ho, Holmium (ppm)	0.81	0.75	0.87	0.78	0.84
In, Indium (ppm)	3.20	2.94	3.45	2.95	3.45
K, Potassium (wt.%)	2.12	2.06	2.19	2.09	2.16
La, Lanthanum (ppm)	36.9	34.3	39.5	35.6	38.2
Li, Lithium (ppm)	19.6	17.7	21.6	18.1	21.2
Lu, Lutetium (ppm)	0.34	0.29	0.39	0.31	0.37
Mg, Magnesium (wt.%)	0.372	0.360	0.384	0.366	0.378
Mn, Manganese (wt.%)	0.017	0.016	0.018	0.016	0.017
Mo, Molybdenum (ppm)	5.33	4.32	6.34	IND	IND
Nb, Niobium (ppm)	9.13	8.31	9.96	8.79	9.48
Nd, Neodymium (ppm)	31.8	29.5	34.1	30.2	33.4
P, Phosphorus (wt.%)	0.030	0.030	0.031	IND	IND

SI unit equivalents: ppm (parts per million;  $1 \times 10^{-6}$ )  $\equiv$  mg/kg; wt.% (weight per cent)  $\equiv$  % (mass fraction).

Note: intervals may appear asymmetric due to rounding.

IND = indeterminate (due to limited reading resolution of the methods employed).

**Table 2 continued.**

Constituent	Certified Value	95 % Expanded Uncertainty		95 % Tolerance Limits	
		Low	High	Low	High
<b>Peroxide Fusion ICP continued</b>					
Pb, Lead (ppm)	128	117	139	123	133
Pr, Praseodymium (ppm)	8.72	8.35	9.09	8.37	9.08
Rb, Rubidium (ppm)	127	122	133	122	133
S, Sulphur (wt.%)	4.48	4.38	4.59	4.42	4.54
Sb, Antimony (ppm)	4.18	3.33	5.03	3.74	4.62
Sc, Scandium (ppm)	9.14	7.96	10.32	IND	IND
Si, Silicon (wt.%)	30.03	29.44	30.63	29.73	30.33
Sm, Samarium (ppm)	5.99	5.74	6.24	5.71	6.28
Sn, Tin (ppm)	41.0	36.2	45.9	38.9	43.2
Sr, Strontium (ppm)	44.9	41.7	48.1	43.4	46.3
Ta, Tantalum (ppm)	0.74	0.59	0.89	IND	IND
Tb, Terbium (ppm)	0.71	0.63	0.80	0.68	0.75
Th, Thorium (ppm)	11.6	11.0	12.1	11.1	12.0
Ti, Titanium (wt.%)	0.252	0.243	0.261	0.246	0.259
Tl, Thallium (ppm)	0.84	0.73	0.94	IND	IND
Tm, Thulium (ppm)	0.34	0.30	0.38	0.31	0.38
U, Uranium (ppm)	3.88	3.57	4.18	3.71	4.04
V, Vanadium (ppm)	164	160	168	161	166
W, Tungsten (ppm)	19.9	18.0	21.8	18.2	21.6
Y, Yttrium (ppm)	22.5	21.2	23.9	21.7	23.4
Yb, Ytterbium (ppm)	2.26	2.05	2.46	2.08	2.44
Zn, Zinc (ppm)	291	276	307	286	297
Zr, Zirconium (ppm)	104	91	117	100	107
<b>Infrared Combustion</b>					
C, Carbon (wt.%)	0.676	0.660	0.692	0.663	0.689
S, Sulphur (wt.%)	4.44	4.32	4.55	4.39	4.49

SI unit equivalents: ppm (parts per million;  $1 \times 10^{-6}$ )  $\equiv$  mg/kg; wt.% (weight per cent)  $\equiv$  % (mass fraction).

Note: intervals may appear asymmetric due to rounding.

IND = indeterminate (due to limited reading resolution of the methods employed. For practical purposes the 95 % Expanded Uncertainty can be set between zero and a two times multiple of the upper bound/non-detect limit value).

**Table 3. Indicative Values for OREAS 931c.**

Constituent	Unit	Value	Constituent	Unit	Value	Constituent	Unit	Value
<b>4-Acid Digestion</b>								
B	ppm	< 10	Ba	ppm	293	Hg	ppm	0.20
<b>Aqua Regia Digestion</b>								
Ba	ppm	84	Ho	ppm	0.26	Pt	ppb	1.50
Dy	ppm	1.56	Lu	ppm	0.079	Sm	ppm	3.53
Er	ppm	0.63	Nd	ppm	19.0	Tm	ppm	0.076
Eu	ppm	0.68	Pd	ppb	2.83			
Gd	ppm	3.06	Pr	ppm	5.08			
<b>Borate Fusion XRF</b>								
Ag	ppm	< 10	Ge	ppm	< 10	Sm	ppm	22.2
As	ppm	101	Hg	ppm	< 100	Sn	ppm	59
Au	ppm	< 10	Ho	ppm	< 10	Ta	ppm	132
Bi	ppm	167	In	ppm	< 100	Tb	ppm	< 10
Cd	ppm	< 10	La	ppm	55	Te	ppm	< 100
Ce	ppm	74	Lu	ppm	< 10	Th	ppm	16.8
Cl	ppm	< 10	MnO	wt. %	0.021	Tl	ppm	< 10
Cs	ppm	< 10	Nb	ppm	56	Tm	ppm	< 10
Dy	ppm	11.8	Nd	ppm	29.0	U	ppm	< 10
Er	ppm	< 10	Pb	ppm	153	W	ppm	26.7
Eu	ppm	< 10	Pr	ppm	< 10	Y	ppm	23.8
Ga	ppm	< 10	Sc	ppm	13.7	Yb	ppm	< 10
Gd	ppm	17.0	Se	ppm	< 10			
<b>Borate / Peroxide Fusion ICP</b>								
Ag	ppm	15.5	Na	wt. %	0.068	Se	ppm	48.9
B	ppm	103	Ni	ppm	31.3	Te	ppm	< 1
Hg	ppm	< 5	Re	ppm	< 0.1			
<b>Laser Ablation ICP-MS</b>								
Ag	ppm	13.6	Hf	ppm	2.92	Sm	ppm	5.83
As	ppm	56	Ho	ppm	0.79	Sn	ppm	40.0
Ba	wt. %	0.164	In	ppm	2.85	Sr	ppm	41.2
Be	ppm	1.80	La	ppm	36.1	Ta	ppm	0.67
Bi	ppm	207	Lu	ppm	0.32	Tb	ppm	0.68
Cd	ppm	0.50	Mn	wt. %	0.017	Te	ppm	0.15
Ce	ppm	64	Mo	ppm	5.30	Th	ppm	10.9
Co	ppm	31.7	Nb	ppm	8.71	Ti	wt. %	0.252
Cr	ppm	67	Nd	ppm	30.1	Tl	ppm	0.15
Cs	ppm	4.76	Ni	ppm	12.0	Tm	ppm	0.34
Cu	wt. %	3.97	Pb	ppm	118	U	ppm	3.67
Dy	ppm	3.98	Pr	ppm	8.58	V	ppm	159
Er	ppm	2.30	Rb	ppm	123	W	ppm	20.0
Eu	ppm	1.07	Re	ppm	< 0.01	Y	ppm	21.7
Ga	ppm	15.6	Sb	ppm	4.30	Yb	ppm	2.23
Gd	ppm	4.56	Sc	ppm	10.5	Zn	ppm	250
Ge	ppm	1.80	Se	ppm	< 5	Zr	ppm	106

SI unit equivalents: ppm (parts per million;  $1 \times 10^{-6}$ )  $\equiv$  mg/kg; wt. % (weight per cent)  $\equiv$  % (mass fraction).

Note: the number of significant figures reported is not a reflection of the level of certainty of stated values. They are instead an artefact of ORE's in-house CRM-specific LIMS.



## TABLE OF CONTENTS

INTRODUCTION .....	10
SOURCE MATERIAL .....	10
COMMUNITION AND HOMOGENISATION PROCEDURES .....	11
PHYSICAL PROPERTIES.....	11
ANALYTICAL PROGRAM.....	12
STATISTICAL ANALYSIS .....	13
Certified Values and their uncertainty intervals .....	13
Indicative (uncertified) values .....	13
Homogeneity Evaluation.....	13
PERFORMANCE GATES .....	14
PARTICIPATING LABORATORIES.....	19
PREPARER AND SUPPLIER .....	22
METROLOGICAL TRACEABILITY .....	22
COMMUTABILITY .....	23
INTENDED USE .....	23
MINIMUM SAMPLE SIZE.....	23
PERIOD OF VALIDITY & STORAGE INSTRUCTIONS .....	24
INSTRUCTIONS FOR HANDLING & CORRECT USE .....	24
LEGAL NOTICE.....	25
QMS CERTIFICATION.....	25
DOCUMENT HISTORY.....	25
CERTIFYING OFFICER .....	26
REFERENCES .....	26

## LIST OF TABLES

Table 1. Certified Values, Uncertainty & Tolerance Intervals for multi-elements by 4-acid digestion and aqua regia digestion in OREAS 931c. ....	2
Table 2. Certified Values, Uncertainty & Tolerance Intervals for other measurands in OREAS 931c. ....	5
Table 3. Indicative Values for OREAS 931c. ....	8
Table 4. Physical properties of OREAS 931c. ....	11
Table 5. Indicative mineralogy of OREAS 931b based on semi-quantitative XRD analysis. ....	12
Table 6. Performance Gates for OREAS 931c. ....	14

## LIST OF FIGURES

Figure 1. Ag by 4-acid digestion in OREAS 931c.....	20
Figure 2. Cu by 4-acid digestion in OREAS 931c.....	21

## INTRODUCTION

OREAS reference materials are intended to provide a low-cost method of evaluating and improving the quality of analysis of geological samples. To the geologist they provide a means of implementing quality control in analytical data sets generated in exploration from the grass roots level through to prospect evaluation, and in grade control at mining operations. To the analyst they provide an effective means of calibrating analytical equipment, assessing new techniques and routinely monitoring in-house procedures. OREAS reference materials enable users to successfully achieve process control of these tasks because the observed variance from repeated analysis has its origin almost exclusively in the analytical process rather than the reference material itself. In evaluating laboratory performance with this CRM, the section headed 'Instructions for correct use' should be read carefully.

Table 1 (generated from data supplied by laboratories all accredited to ISO 17025 for 4-acid and aqua regia digestions) and Table 2 (generated from data supplied by laboratories mostly accredited to ISO 17025) provide the certified values and their associated 95 % expanded uncertainty and tolerance intervals, Table 3 shows indicative values including major and trace element characterisation, Table 4 provides some indicative physical properties and Table 5 provides indicative mineralogy based on semi-quantitative XRD analysis. Table 6 presents the performance gate intervals for all certified values.

Tabulated results of all analytes together with uncorrected means, medians, standard deviations, relative standard deviations and per cent deviation of lab means from the corrected mean of means (PDM<sup>3</sup>) are presented in the detailed certification data for this CRM (**OREAS 931c-DataPack.1.0.241122\_222851.xlsx**).

Results are also presented in scatter plots for Ag and Cu by 4-acid digestion with ICP-OES/MS finish in Figures 1 and 2 respectively, together with  $\pm 3SD$  (magenta) and  $\pm 5\%$  (yellow) control lines and certified value (green line). Accepted individual results are coloured blue and individual and dataset outliers are identified in red and violet, respectively.

## SOURCE MATERIAL

OREAS 931c was prepared from material from the CSA mine located near the town of Cobar in central western New South Wales, Australia. The copper ore body is hosted by the Early Devonian CSA Siltstone, a thinly bedded turbiditic sequence of carbonaceous siltstones and mudstones with minor coarser units. The CSA Siltstone is part of the Cobar Supergroup, consisting of lower syn-rift sediments and upper post-rift sag phase sediments. The mineralisation is structurally controlled and confined to a number of steeply dipping bodies within a major shear zone on the eastern margin of the Early Devonian Cobar Basin. It is characterised by low-grade greenschist alteration and epigenetic low-grade mineralisation enveloping higher-grade shoots of vein complexes or sub-massive to massive sulphides. The sulphides include chalcopyrite, pyrrhotite, pyrite, sphalerite, galena, bornite and cubanite. Iron-rich chlorite and silica are prominent alterations in the siltstone host.

## COMMINUTION AND HOMOGENISATION PROCEDURES

The material constituting OREAS 931c was prepared in the following manner:

- Drying the ores and barren black slate to constant mass at 105 °C;
- Multi-stage milling of ores and barren black slate to achieve a particle size distribution of > 99.5 % passing 75 µm;
- Preliminary homogenisation of ore source materials;
- Representative sampling and check assaying of ore source materials;
- Blending the ores and barren black slate in appropriate proportions to achieve target grades;
- Homogenisation using OREAS' novel processing technologies;
- Packaging in 10 g units sealed in laminated foil pouches and 500 g units in plastic jars.

## PHYSICAL PROPERTIES

OREAS 931c was tested at ORE Research & Exploration Pty Ltd's onsite facility for various physical properties. Table 4 presents these findings that should be used for informational purposes only.

**Table 4. Physical properties of OREAS 931c.**

Bulk Density (kg/m <sup>3</sup> )	Moisture (wt.%)	Munsell Notation <sup>‡</sup>	Munsell Color <sup>‡</sup>
706	0.56	N5	Medium Gray

<sup>‡</sup>The Munsell Rock Color Chart helps geologists and archeologists communicate with colour more effectively by cross-referencing ISCC-NBS colour names with unique Munsell alpha-numeric colour notations for rock colour samples.

## MINERALOGY

The semi-quantitative XRD results shown in Table 5 below have been normalised to 100% and represent the relative proportion of crystalline material. Totals greater or less than 100% are due to rounding errors. A trace amount of orthopyroxene might be present. 'Clay mineral' appears to be mainly vermiculite. 'Kandite group' appears to be mainly kaolinite. A trace of zeolite, calcite and epidote may be present. Some amorphous material might be present.

**Table 5. Indicative mineralogy of OREAS 931b based on semi-quantitative XRD analysis.**

Mineral / Mineral Group	% (mass ratio)
Clay Mineral	< 1
Stilpnomelane and/or Sepiolite	1
Chlorite	3
Kandite group	< 1
Serpentine	1
Annite - biotite - phlogopite	9
Muscovite	24
Talc	0
Plagioclase	2
K-feldspar and/or rutile	1
Quartz	52
Calcite	0
Ankerite - dolomite	0
Pyrite	0
Chalcopyrite	5
Gypsum	0
Magnetite	2
Goethite	1

## ANALYTICAL PROGRAM

Twenty-six commercial analytical laboratories participated in the program to certify the elements reported in Table 1 and 2. The following methods were employed:

- 4-acid (HNO<sub>3</sub>-HF-HClO<sub>4</sub>-HCl) digestion with full suite ICP-OES and ICP-MS elemental packages (up to 25 laboratories depending on the element);
- Aqua regia digestion for full elemental suite ICP-OES and ICP-MS (up to 24 laboratories depending on the element).
- Lithium borate fusion whole rock analysis package by X-ray fluorescence (up to 15 laboratories depending on the element);
- Thermogravimetry: Loss on Ignition (LOI) at 1000 °C (10 laboratories used a thermogravimetric analyser, 4 laboratories used a conventional muffle furnace and 3 laboratories included LOI with their fusion package);
- Lithium borate or sodium peroxide fusion with full suite ICP-OES and ICP-MS elemental packages (up to 21 laboratories depending on the element);
- C and S by infrared combustion furnace/CS analyser (23 laboratories).

For the round robin program ten 350 g test units were taken at predetermined intervals during the bagging stage, immediately following homogenisation and are considered representative of the entire prepared batch. The six samples received by each laboratory were obtained by taking two 15 g scoop splits from each of three separate 350 g test units. This format enabled a nested ANOVA treatment of the results to evaluate homogeneity, i.e. to ascertain whether between-unit variance is greater than within-unit variance (see 'Homogeneity Evaluation' section below).

## STATISTICAL ANALYSIS

**Certified Values and their uncertainty intervals** (Tables 1 and 2) have been determined for each analyte following removal of individual, laboratory dataset (batch) and 3SD outliers (single iteration).

For individual outliers within a laboratory batch the z-score test is used in combination with a second method that determines the per cent deviation of the individual value from the batch median. Outliers in general are selected on the basis of z-scores  $> 2.5$  and with per cent deviations (i)  $> 3$  and (ii) more than three times the average absolute per cent deviation for the batch. Each laboratory data set mean is tested for outlying status based on z-score discrimination and rejected if  $> 2.5$ . After individual and laboratory data set (batch) outliers have been eliminated a non-iterative 3 standard deviation filter is applied, with those values lying outside this window also relegated to outlying status. However, while statistics are taken into account, the exercise of a statistician's prerogative plays a significant role in identifying outliers.

**95 % Expanded Uncertainty** provides a 95 % probability that the true value of the analyte under consideration lies between the upper and lower limits and is calculated according to the method outlined in ISO 98-3:2008 [5, 15]. All known or suspected sources of bias have been investigated or taken into account.

**Indicative (uncertified) values** (Table 3) are present where the number of laboratories reporting a particular analyte is insufficient ( $< 5$ ) to support certification or where interlaboratory consensus is poor. This data is intended for 'informational purposes' only.

**Standard Deviation** intervals (see Table 6, 'Performance Gates') provide an indication of a level of performance that might reasonably be expected from a laboratory being monitored by this CRM in a QA/QC program. They take into account errors attributable to measurement uncertainty and CRM variability. For an effective CRM the contribution of the latter should be negligible in comparison to measurement errors. The Standard Deviation values include all sources of measurement uncertainty: between-lab variance, within-run variance (precision errors) and CRM variability.

The SD for each analyte's certified value is calculated from the same filtered data set used to determine the certified value, i.e., after removal of all individual, lab dataset (batch) and 3SD outliers (single iteration). These outliers can only be removed after the absolute homogeneity of the CRM has been independently established, i.e., the outliers must be confidently deemed to be analytical rather than arising from inhomogeneity of the CRM. ***The standard deviation is then calculated for each analyte from the pooled accepted analyses generated from the certification program.***

### Homogeneity Evaluation

The tolerance limits (ISO 16269:2014) [6] shown in Tables 1 and 2 were determined using an analysis of precision errors method and are considered a conservative estimate of true homogeneity. The meaning of tolerance limits may be illustrated for copper by 4-acid digestion, where 99 % of the time ( $1-\alpha=0.99$ ) at least 95 % of subsamples ( $p=0.95$ ) will have concentrations lying between 3.90 wt. % and 4.00 wt. %. Put more precisely, this means that if the same number of subsamples were taken and analysed in the same manner repeatedly, 99 % of the tolerance intervals so constructed would cover at least 95 % of the total population, and 1% of the tolerance intervals would cover less than 95 % of the total

population. **Please note that tolerance limits pertain to the homogeneity of the CRM only and should not be used as control limits for laboratory performance.**

Based on the statistical analysis of the results of the interlaboratory certification program, it can be concluded that OREAS 931c is fit-for-purpose as a certified reference material (see 'Intended Use' below).

## PERFORMANCE GATES

Table 5 below shows intervals calculated for two and three standard deviations. As a guide these intervals may be regarded as warning or rejection for multiple 2SD outliers, or rejection for individual 3SD outliers in QC monitoring, although their precise application should be at the discretion of the QC manager concerned (also see 'Intended Use' section below). Westgard Rules extend the basics of single-rule QC monitoring using multi-rules (for more information visit [www.westgard.com/mltirule.htm](http://www.westgard.com/mltirule.htm)). A second method utilises a 5% window calculated directly from the certified value.

Standard deviation is also shown in relative percent for one, two and three relative standard deviations (1RSD, 2RSD and 3RSD) to facilitate an appreciation of the magnitude of these numbers and a comparison with the 5% window. Caution should be exercised when concentration levels approach lower limits of detection of the analytical methods employed as performance gates calculated from standard deviations tend to be excessively wide whereas those determined by the 5% method are too narrow. One approach used at commercial laboratories is to set the acceptance criteria at twice the detection level (DL)  $\pm$  10 %.

*i.e., Certified Value  $\pm$  10 %  $\pm$  2DL [1].*

**Table 6. Performance Gates for OREAS 931c.**

Constituent	Certified Value	Absolute Standard Deviations					Relative Standard Deviations			5 % window	
		1SD	2SD Low	2SD High	3SD Low	3SD High	1RSD	2RSD	3RSD	Low	High
<b>4-Acid Digestion</b>											
Ag, ppm	15.3	0.64	14.0	16.6	13.4	17.2	4.19%	8.38%	12.57%	14.5	16.0
Al, wt.%	5.37	0.157	5.06	5.69	4.90	5.85	2.93%	5.85%	8.78%	5.10	5.64
As, ppm	53	2.9	47	59	44	61	5.55%	11.10%	16.64%	50	55
Be, ppm	1.93	0.068	1.80	2.07	1.73	2.14	3.51%	7.03%	10.54%	1.84	2.03
Bi, ppm	217	9	199	234	190	243	4.11%	8.22%	12.34%	206	227
Ca, wt.%	0.081	0.003	0.074	0.088	0.071	0.091	4.25%	8.51%	12.76%	0.077	0.085
Cd, ppm	0.61	0.06	0.48	0.74	0.42	0.80	10.42%	20.84%	31.26%	0.58	0.64
Ce, ppm	64	3.7	57	72	53	75	5.75%	11.50%	17.24%	61	68
Co, ppm	31.5	1.25	29.0	34.0	27.7	35.2	3.97%	7.94%	11.91%	29.9	33.1
Cr, ppm	67	7	53	80	46	87	10.29%	20.59%	30.88%	63	70
Cs, ppm	4.99	0.257	4.48	5.51	4.22	5.76	5.14%	10.29%	15.43%	4.74	5.24
Cu, wt.%	3.95	0.086	3.78	4.12	3.69	4.21	2.17%	4.35%	6.52%	3.75	4.15

SI unit equivalents: ppm (parts per million;  $1 \times 10^{-6}$ )  $\equiv$  mg/kg; wt.% (weight per cent)  $\equiv$  % (mass fraction).

Note 1: intervals may appear asymmetric due to rounding.

Note 2: the number of decimal places quoted does not imply accuracy of the certified value to this level but are given to minimise rounding errors when calculating 2SD and 3SD windows.

Table 6 continued.

Constituent	Certified Value	Absolute Standard Deviations					Relative Standard Deviations			5 % window	
		1SD	2SD Low	2SD High	3SD Low	3SD High	1RSD	2RSD	3RSD	Low	High
<b>4-Acid Digestion continued</b>											
Dy, ppm	2.89	0.33	2.22	3.55	1.89	3.88	11.45%	22.90%	34.35%	2.74	3.03
Er, ppm	1.44	0.120	1.20	1.68	1.08	1.80	8.39%	16.77%	25.16%	1.36	1.51
Eu, ppm	1.04	0.054	0.93	1.15	0.88	1.20	5.24%	10.47%	15.71%	0.99	1.09
Fe, wt.%	8.49	0.256	7.98	9.00	7.72	9.26	3.02%	6.03%	9.05%	8.06	8.91
Ga, ppm	16.8	0.82	15.2	18.4	14.3	19.3	4.90%	9.79%	14.69%	16.0	17.6
Gd, ppm	4.31	0.194	3.92	4.70	3.73	4.89	4.50%	8.99%	13.49%	4.10	4.53
Ge, ppm	0.22	0.05	0.12	0.33	0.07	0.38	23.32%	46.63%	69.95%	0.21	0.23
Hf, ppm	1.96	0.140	1.68	2.24	1.54	2.38	7.12%	14.23%	21.35%	1.86	2.06
Ho, ppm	0.52	0.029	0.46	0.57	0.43	0.60	5.54%	11.09%	16.63%	0.49	0.54
In, ppm	3.24	0.177	2.88	3.59	2.70	3.77	5.47%	10.95%	16.42%	3.07	3.40
K, wt.%	2.14	0.051	2.04	2.24	1.99	2.29	2.38%	4.75%	7.13%	2.03	2.25
La, ppm	33.0	3.9	25.1	40.9	21.2	44.8	11.94%	23.89%	35.83%	31.3	34.6
Li, ppm	19.3	0.56	18.2	20.4	17.6	21.0	2.90%	5.81%	8.71%	18.3	20.3
Lu, ppm	0.22	0.019	0.18	0.26	0.16	0.28	8.93%	17.85%	26.78%	0.21	0.23
Mg, wt.%	0.363	0.016	0.331	0.396	0.314	0.413	4.53%	9.06%	13.59%	0.345	0.382
Mn, wt.%	0.017	0.000	0.016	0.018	0.016	0.018	2.33%	4.66%	6.98%	0.016	0.018
Mo, ppm	4.99	0.254	4.48	5.50	4.23	5.76	5.10%	10.19%	15.29%	4.74	5.24
Na, wt.%	0.071	0.006	0.060	0.083	0.055	0.088	7.86%	15.71%	23.57%	0.068	0.075
Nb, ppm	3.09	0.47	2.15	4.04	1.67	4.51	15.32%	30.64%	45.95%	2.94	3.25
Nd, ppm	30.6	1.48	27.6	33.6	26.2	35.0	4.84%	9.68%	14.52%	29.1	32.1
Ni, ppm	11.8	0.66	10.5	13.2	9.8	13.8	5.58%	11.17%	16.75%	11.2	12.4
P, wt.%	0.029	0.001	0.026	0.031	0.025	0.033	4.41%	8.82%	13.23%	0.027	0.030
Pb, ppm	127	5	116	138	110	143	4.33%	8.66%	12.99%	121	133
Pr, ppm	8.04	0.559	6.92	9.15	6.36	9.71	6.96%	13.91%	20.87%	7.63	8.44
Rb, ppm	125	5	114	136	109	141	4.34%	8.68%	13.01%	119	131
Re, ppm	< 0.002	IND	IND	IND	IND	IND	IND	IND	IND	IND	IND
S, wt.%	4.29	0.174	3.94	4.64	3.77	4.81	4.06%	8.11%	12.17%	4.08	4.51
Sb, ppm	3.74	0.309	3.13	4.36	2.82	4.67	8.25%	16.50%	24.75%	3.56	3.93
Sc, ppm	9.89	0.603	8.68	11.09	8.08	11.69	6.10%	12.20%	18.30%	9.39	10.38
Se, ppm	46.3	4.40	37.5	55.0	33.1	59.4	9.51%	19.01%	28.52%	43.9	48.6
Sm, ppm	5.52	0.466	4.59	6.45	4.12	6.92	8.45%	16.90%	25.36%	5.24	5.79
Sn, ppm	37.3	1.92	33.4	41.1	31.5	43.0	5.15%	10.30%	15.45%	35.4	39.1
Sr, ppm	39.1	2.36	34.4	43.9	32.1	46.2	6.02%	12.04%	18.05%	37.2	41.1
Ta, ppm	0.21	0.05	0.11	0.31	0.06	0.36	23.08%	46.16%	69.24%	0.20	0.22
Tb, ppm	0.52	0.06	0.39	0.64	0.33	0.70	11.86%	23.73%	35.59%	0.49	0.54
Te, ppm	0.15	0.03	0.10	0.21	0.08	0.23	16.50%	33.00%	49.50%	0.15	0.16
Th, ppm	10.6	1.1	8.4	12.8	7.3	13.9	10.37%	20.74%	31.11%	10.1	11.1
Ti, wt.%	0.158	0.011	0.136	0.179	0.126	0.190	6.80%	13.59%	20.39%	0.150	0.166
Tl, ppm	0.80	0.044	0.71	0.89	0.67	0.93	5.47%	10.95%	16.42%	0.76	0.84
Tm, ppm	0.20	0.02	0.16	0.24	0.13	0.26	10.73%	21.47%	32.20%	0.19	0.21
U, ppm	3.70	0.206	3.29	4.11	3.08	4.31	5.56%	11.12%	16.68%	3.51	3.88
V, ppm	158	8	143	173	135	181	4.81%	9.61%	14.42%	150	166
W, ppm	18.3	1.73	14.8	21.8	13.1	23.5	9.46%	18.91%	28.37%	17.4	19.2

SI unit equivalents: ppm (parts per million;  $1 \times 10^{-6}$ )  $\equiv$  mg/kg; wt.% (weight per cent)  $\equiv$  % (mass fraction).

Note 1: intervals may appear asymmetric due to rounding; IND = indeterminate.

Note 2: the number of decimal places quoted does not imply accuracy of the certified value to this level but are given to minimise rounding errors when calculating 2SD and 3SD windows.

Table 6 continued.

Constituent	Certified Value	Absolute Standard Deviations					Relative Standard Deviations			5 % window	
		1SD	2SD Low	2SD High	3SD Low	3SD High	1RSD	2RSD	3RSD	Low	High
<b>4-Acid Digestion continued</b>											
Y, ppm	14.3	1.41	11.5	17.1	10.1	18.6	9.85%	19.71%	29.56%	13.6	15.0
Yb, ppm	1.42	0.110	1.20	1.64	1.09	1.75	7.75%	15.50%	23.25%	1.35	1.49
Zn, ppm	286	6	274	298	268	304	2.07%	4.13%	6.20%	272	300
Zr, ppm	68	4.2	60	76	55	80	6.18%	12.35%	18.53%	65	71
<b>Aqua Regia Digestion</b>											
Ag, ppm	15.2	0.71	13.8	16.6	13.1	17.3	4.67%	9.34%	14.01%	14.5	16.0
Al, wt.%	0.783	0.068	0.647	0.918	0.580	0.986	8.65%	17.30%	25.95%	0.744	0.822
As, ppm	52	3.6	45	59	41	62	6.87%	13.73%	20.60%	49	54
Au, ppm	< 0.02	IND	IND	IND	IND	IND	IND	IND	IND	IND	IND
B, ppm	< 10	IND	IND	IND	IND	IND	IND	IND	IND	IND	IND
Be, ppm	0.42	0.027	0.37	0.47	0.34	0.50	6.35%	12.69%	19.04%	0.40	0.44
Bi, ppm	212	13	187	237	175	250	5.92%	11.83%	17.75%	202	223
Ca, wt.%	0.078	0.004	0.070	0.087	0.066	0.091	5.38%	10.75%	16.13%	0.074	0.082
Cd, ppm	0.59	0.07	0.46	0.72	0.39	0.79	11.17%	22.34%	33.51%	0.56	0.62
Ce, ppm	43.5	4.34	34.8	52.2	30.5	56.5	9.97%	19.94%	29.91%	41.3	45.7
Co, ppm	30.7	2.21	26.3	35.1	24.1	37.4	7.20%	14.40%	21.60%	29.2	32.3
Cr, ppm	17.4	1.25	14.9	19.9	13.6	21.1	7.20%	14.41%	21.61%	16.5	18.2
Cs, ppm	1.85	0.21	1.44	2.27	1.23	2.47	11.20%	22.41%	33.61%	1.76	1.94
Cu, wt.%	3.89	0.104	3.68	4.09	3.57	4.20	2.68%	5.37%	8.05%	3.69	4.08
Fe, wt.%	8.18	0.273	7.64	8.73	7.36	9.00	3.33%	6.67%	10.00%	7.77	8.59
Ga, ppm	3.17	0.273	2.62	3.71	2.35	3.98	8.61%	17.23%	25.84%	3.01	3.32
Ge, ppm	0.20	0.04	0.11	0.29	0.06	0.33	22.68%	45.37%	68.05%	0.19	0.21
Hf, ppm	0.32	0.023	0.27	0.37	0.25	0.39	7.18%	14.36%	21.54%	0.30	0.34
Hg, ppm	0.10	0.02	0.06	0.14	0.04	0.16	19.53%	39.05%	58.58%	0.10	0.11
In, ppm	3.15	0.188	2.77	3.52	2.58	3.71	5.97%	11.94%	17.92%	2.99	3.30
K, wt.%	0.236	0.019	0.198	0.274	0.179	0.293	8.05%	16.09%	24.14%	0.225	0.248
La, ppm	20.0	2.7	14.5	25.5	11.8	28.3	13.73%	27.45%	41.18%	19.0	21.0
Li, ppm	2.40	0.32	1.76	3.04	1.44	3.36	13.38%	26.76%	40.15%	2.28	2.52
Mg, wt.%	0.132	0.011	0.109	0.155	0.098	0.166	8.64%	17.28%	25.91%	0.125	0.139
Mn, wt.%	0.015	0.001	0.013	0.016	0.013	0.016	4.05%	8.11%	12.16%	0.014	0.015
Mo, ppm	4.79	0.466	3.86	5.72	3.39	6.19	9.73%	19.46%	29.19%	4.55	5.03
Na, wt.%	0.011	0.002	0.007	0.015	0.005	0.017	18.56%	37.11%	55.67%	0.010	0.011
Nb, ppm	< 0.05	IND	IND	IND	IND	IND	IND	IND	IND	IND	IND
Ni, ppm	9.14	0.729	7.68	10.60	6.95	11.33	7.98%	15.95%	23.93%	8.68	9.60
P, wt.%	0.024	0.002	0.019	0.028	0.017	0.030	9.09%	18.18%	27.28%	0.022	0.025
Pb, ppm	114	4	105	122	101	126	3.74%	7.47%	11.21%	108	119
Rb, ppm	15.5	1.20	13.1	17.9	11.9	19.1	7.70%	15.41%	23.11%	14.8	16.3
Re, ppm	0.001	0.000	0.001	0.001	0.000	0.001	16.03%	32.06%	48.09%	0.001	0.001
S, wt.%	4.28	0.180	3.92	4.64	3.74	4.82	4.22%	8.43%	12.65%	4.07	4.49
Sb, ppm	2.51	0.45	1.62	3.40	1.17	3.85	17.77%	35.55%	53.32%	2.39	2.64
Sc, ppm	1.93	0.161	1.61	2.26	1.45	2.42	8.34%	16.68%	25.01%	1.84	2.03
Se, ppm	44.5	4.5	35.5	53.5	31.0	58.0	10.11%	20.22%	30.33%	42.3	46.7
Sn, ppm	33.7	2.29	29.1	38.3	26.9	40.6	6.79%	13.58%	20.37%	32.0	35.4

SI unit equivalents: ppm (parts per million;  $1 \times 10^{-6}$ )  $\equiv$  mg/kg; wt.% (weight per cent)  $\equiv$  % (mass fraction).

Note 1: intervals may appear asymmetric due to rounding; IND = indeterminate.

Note 2: the number of decimal places quoted does not imply accuracy of the certified value to this level but are given to minimise rounding errors when calculating 2SD and 3SD windows.



Table 6 continued.

Constituent	Certified Value	Absolute Standard Deviations					Relative Standard Deviations			5 % window	
		1SD	2SD Low	2SD High	3SD Low	3SD High	1RSD	2RSD	3RSD	Low	High
<b>Aqua Regia Digestion continued</b>											
Sr, ppm	11.5	2.1	7.3	15.7	5.3	17.8	18.08%	36.17%	54.25%	10.9	12.1
Ta, ppm	< 0.01	IND	IND	IND	IND	IND	IND	IND	IND	IND	IND
Tb, ppm	0.33	0.04	0.25	0.41	0.21	0.45	12.26%	24.53%	36.79%	0.32	0.35
Te, ppm	0.14	0.02	0.10	0.17	0.08	0.19	13.12%	26.25%	39.37%	0.13	0.14
Th, ppm	7.25	0.326	6.60	7.90	6.27	8.22	4.49%	8.99%	13.48%	6.88	7.61
Ti, wt. %	0.005	0.001	0.004	0.006	0.003	0.007	13.69%	27.37%	41.06%	0.005	0.005
Tl, ppm	0.14	0.02	0.10	0.19	0.07	0.21	16.00%	31.99%	47.99%	0.14	0.15
U, ppm	2.06	0.117	1.83	2.30	1.71	2.41	5.66%	11.32%	16.97%	1.96	2.17
V, ppm	20.9	1.73	17.4	24.3	15.7	26.1	8.26%	16.52%	24.77%	19.8	21.9
W, ppm	14.1	1.9	10.3	18.0	8.3	19.9	13.62%	27.24%	40.86%	13.4	14.8
Y, ppm	5.70	0.337	5.03	6.38	4.70	6.71	5.90%	11.80%	17.70%	5.42	5.99
Yb, ppm	0.59	0.026	0.54	0.64	0.51	0.66	4.36%	8.71%	13.07%	0.56	0.62
Zn, ppm	272	10	253	292	243	302	3.57%	7.13%	10.70%	259	286
Zr, ppm	10.9	0.98	8.9	12.9	7.9	13.8	9.02%	18.05%	27.07%	10.3	11.4
<b>Borate Fusion XRF</b>											
Al <sub>2</sub> O <sub>3</sub> , wt. %	10.33	0.157	10.01	10.64	9.86	10.80	1.52%	3.04%	4.56%	9.81	10.84
BaO, wt. %	0.187	0.012	0.164	0.210	0.152	0.222	6.16%	12.32%	18.48%	0.178	0.196
CaO, wt. %	0.109	0.017	0.075	0.143	0.058	0.160	15.72%	31.43%	47.15%	0.104	0.114
Co, ppm	< 100	IND	IND	IND	IND	IND	IND	IND	IND	IND	IND
Cr <sub>2</sub> O <sub>3</sub> , ppm	151	53	45	257	0	310	35.09%	70.18%	105.28	144	159
Cu, wt. %	3.91	0.063	3.79	4.04	3.72	4.10	1.61%	3.22%	4.83%	3.72	4.11
Fe <sub>2</sub> O <sub>3</sub> , wt. %	12.23	0.101	12.03	12.44	11.93	12.54	0.83%	1.66%	2.49%	11.62	12.84
Hf, ppm	< 80	IND	IND	IND	IND	IND	IND	IND	IND	IND	IND
K <sub>2</sub> O, wt. %	2.60	0.035	2.53	2.67	2.49	2.70	1.35%	2.69%	4.04%	2.47	2.73
MgO, wt. %	0.619	0.040	0.539	0.700	0.499	0.740	6.49%	12.97%	19.46%	0.588	0.650
Mo, ppm	< 50	IND	IND	IND	IND	IND	IND	IND	IND	IND	IND
Na <sub>2</sub> O, wt. %	0.111	0.033	0.045	0.176	0.012	0.209	29.69%	59.38%	89.07%	0.105	0.116
Ni, ppm	< 100	IND	IND	IND	IND	IND	IND	IND	IND	IND	IND
P <sub>2</sub> O <sub>5</sub> , wt. %	0.065	0.007	0.051	0.080	0.043	0.087	11.13%	22.26%	33.38%	0.062	0.069
Rb, ppm	97	23	51	144	27	167	23.95%	47.89%	71.84%	93	102
Sb, ppm	< 50	IND	IND	IND	IND	IND	IND	IND	IND	IND	IND
SiO <sub>2</sub> , wt. %	63.22	0.570	62.08	64.36	61.51	64.93	0.90%	1.80%	2.71%	60.06	66.38
SO <sub>3</sub> , wt. %	10.56	0.959	8.64	12.48	7.68	13.44	9.08%	18.17%	27.25%	10.03	11.09
SrO, ppm	< 120	IND	IND	IND	IND	IND	IND	IND	IND	IND	IND
TiO <sub>2</sub> , wt. %	0.426	0.017	0.392	0.459	0.375	0.476	3.93%	7.86%	11.79%	0.404	0.447
V, ppm	137	44	49	224	6	268	31.97%	63.94%	95.92%	130	144
Zn, ppm	280	35	209	351	173	386	12.68%	25.36%	38.04%	266	294
Zr, ppm	101	2	98	104	96	106	1.58%	3.17%	4.75%	96	106
<b>Thermogravimetry</b>											
LOI <sup>1000</sup> , wt. %	4.67	0.322	4.03	5.32	3.71	5.64	6.90%	13.79%	20.69%	4.44	4.91

SI unit equivalents: ppm (parts per million;  $1 \times 10^{-6}$ )  $\equiv$  mg/kg; wt. % (weight per cent)  $\equiv$  % (mass fraction).

Note 1: intervals may appear asymmetric due to rounding; IND = indeterminate.

Note 2: the number of decimal places quoted does not imply accuracy of the certified value to this level but are given to minimise rounding errors when calculating 2SD and 3SD windows.

Table 6 continued.

Constituent	Certified Value	Absolute Standard Deviations					Relative Standard Deviations			5 % window	
		1SD	2SD Low	2SD High	3SD Low	3SD High	1RSD	2RSD	3RSD	Low	High
<b>Borate / Peroxide Fusion ICP</b>											
Al, wt.%	5.42	0.100	5.22	5.62	5.12	5.72	1.84%	3.68%	5.51%	5.15	5.69
As, ppm	55	3.4	48	62	45	65	6.20%	12.39%	18.59%	52	57
Ba, wt.%	0.165	0.005	0.154	0.176	0.149	0.181	3.32%	6.64%	9.96%	0.157	0.173
Be, ppm	2.00	0.23	1.54	2.47	1.30	2.70	11.64%	23.27%	34.91%	1.90	2.10
Bi, ppm	219	10	200	238	190	248	4.39%	8.78%	13.17%	208	230
Ca, wt.%	0.085	0.017	0.051	0.118	0.034	0.135	19.74%	39.49%	59.23%	0.080	0.089
Cd, ppm	< 10	IND	IND	IND	IND	IND	IND	IND	IND	IND	IND
Ce, ppm	70	3.4	64	77	60	81	4.83%	9.66%	14.49%	67	74
Co, ppm	32.1	1.05	30.0	34.2	28.9	35.2	3.26%	6.52%	9.78%	30.5	33.7
Cr <sub>2</sub> O <sub>3</sub> , ppm	111	5	101	121	97	125	4.33%	8.65%	12.98%	105	117
Cs, ppm	5.19	0.321	4.54	5.83	4.22	6.15	6.20%	12.39%	18.59%	4.93	5.45
Cu, wt.%	3.89	0.098	3.70	4.09	3.60	4.19	2.51%	5.03%	7.54%	3.70	4.09
Dy, ppm	4.09	0.162	3.77	4.41	3.61	4.58	3.95%	7.90%	11.84%	3.89	4.30
Er, ppm	2.32	0.173	1.97	2.66	1.80	2.84	7.45%	14.89%	22.34%	2.20	2.43
Eu, ppm	1.12	0.085	0.95	1.29	0.86	1.37	7.62%	15.23%	22.85%	1.06	1.17
Fe, wt.%	8.55	0.185	8.18	8.92	8.00	9.11	2.17%	4.33%	6.50%	8.12	8.98
Ga, ppm	17.1	1.06	15.0	19.2	13.9	20.3	6.18%	12.37%	18.55%	16.3	18.0
Gd, ppm	4.78	0.281	4.22	5.35	3.94	5.63	5.87%	11.75%	17.62%	4.54	5.02
Ge, ppm	2.07	0.22	1.64	2.50	1.42	2.72	10.42%	20.84%	31.27%	1.97	2.17
Hf, ppm	3.02	0.40	2.22	3.81	1.82	4.21	13.17%	26.33%	39.50%	2.86	3.17
Ho, ppm	0.81	0.033	0.75	0.88	0.71	0.91	4.01%	8.03%	12.04%	0.77	0.85
In, ppm	3.20	0.158	2.88	3.51	2.73	3.67	4.93%	9.87%	14.80%	3.04	3.36
K, wt.%	2.12	0.097	1.93	2.32	1.83	2.42	4.56%	9.12%	13.68%	2.02	2.23
La, ppm	36.9	2.44	32.0	41.8	29.6	44.2	6.62%	13.23%	19.85%	35.0	38.7
Li, ppm	19.6	1.81	16.0	23.3	14.2	25.1	9.23%	18.47%	27.70%	18.7	20.6
Lu, ppm	0.34	0.04	0.27	0.41	0.23	0.45	10.69%	21.39%	32.08%	0.32	0.36
Mg, wt.%	0.372	0.014	0.343	0.401	0.329	0.415	3.86%	7.71%	11.57%	0.353	0.390
Mn, wt.%	0.017	0.001	0.014	0.020	0.012	0.021	8.80%	17.61%	26.41%	0.016	0.018
Mo, ppm	5.33	0.61	4.10	6.56	3.49	7.17	11.53%	23.06%	34.59%	5.06	5.60
Nb, ppm	9.13	0.465	8.20	10.07	7.74	10.53	5.09%	10.19%	15.28%	8.68	9.59
Nd, ppm	31.8	1.45	28.9	34.7	27.4	36.2	4.56%	9.13%	13.69%	30.2	33.4
P, wt.%	0.030	0.001	0.029	0.032	0.028	0.032	2.06%	4.12%	6.18%	0.029	0.032
Pb, ppm	128	7	113	143	106	150	5.73%	11.46%	17.19%	122	134
Pr, ppm	8.72	0.298	8.13	9.32	7.83	9.62	3.42%	6.83%	10.25%	8.29	9.16
Rb, ppm	127	5	118	137	114	141	3.55%	7.11%	10.66%	121	134
S, wt.%	4.48	0.108	4.27	4.70	4.16	4.81	2.41%	4.81%	7.22%	4.26	4.71
Sb, ppm	4.18	0.55	3.08	5.28	2.54	5.83	13.12%	26.25%	39.37%	3.97	4.39
Sc, ppm	9.14	0.738	7.66	10.61	6.92	11.35	8.08%	16.16%	24.25%	8.68	9.59
Si, wt.%	30.03	0.891	28.25	31.82	27.36	32.71	2.97%	5.93%	8.90%	28.53	31.54
Sm, ppm	5.99	0.282	5.43	6.55	5.14	6.84	4.71%	9.42%	14.13%	5.69	6.29
Sn, ppm	41.0	2.83	35.4	46.7	32.5	49.5	6.89%	13.78%	20.67%	39.0	43.1
Sr, ppm	44.9	4.6	35.6	54.2	30.9	58.8	10.35%	20.71%	31.06%	42.6	47.1
Ta, ppm	0.74	0.14	0.47	1.01	0.33	1.15	18.46%	36.93%	55.39%	0.70	0.78

SI unit equivalents: ppm (parts per million;  $1 \times 10^{-6}$ )  $\equiv$  mg/kg; wt.% (weight per cent)  $\equiv$  % (mass fraction).

Note 1: intervals may appear asymmetric due to rounding; IND = indeterminate.

Note 2: the number of decimal places quoted does not imply accuracy of the certified value to this level but are given to minimise rounding errors when calculating 2SD and 3SD windows.

**Table 6 continued.**

Constituent	Certified Value	Absolute Standard Deviations					Relative Standard Deviations			5 % window	
		1SD	2SD Low	2SD High	3SD Low	3SD High	1RSD	2RSD	3RSD	Low	High
<b>Borate / Peroxide Fusion ICP continued</b>											
Tb, ppm	0.71	0.045	0.62	0.80	0.58	0.85	6.34%	12.68%	19.01%	0.68	0.75
Th, ppm	11.6	0.44	10.7	12.4	10.2	12.9	3.84%	7.69%	11.53%	11.0	12.1
Ti, wt. %	0.252	0.007	0.238	0.267	0.230	0.274	2.90%	5.80%	8.69%	0.240	0.265
Tl, ppm	0.84	0.068	0.70	0.98	0.64	1.04	8.09%	16.18%	24.27%	0.80	0.88
Tm, ppm	0.34	0.021	0.30	0.38	0.28	0.41	6.24%	12.49%	18.73%	0.32	0.36
U, ppm	3.88	0.144	3.59	4.17	3.44	4.31	3.72%	7.44%	11.16%	3.68	4.07
V, ppm	164	6	152	175	146	181	3.51%	7.01%	10.52%	155	172
W, ppm	19.9	1.87	16.2	23.6	14.3	25.5	9.39%	18.77%	28.16%	18.9	20.9
Y, ppm	22.5	0.99	20.6	24.5	19.6	25.5	4.38%	8.77%	13.15%	21.4	23.7
Yb, ppm	2.26	0.158	1.94	2.57	1.78	2.73	7.02%	14.04%	21.06%	2.14	2.37
Zn, ppm	291	17	257	326	239	343	5.97%	11.93%	17.90%	277	306
Zr, ppm	104	10	84	123	75	133	9.33%	18.67%	28.00%	99	109
<b>Infrared Combustion</b>											
C, wt. %	0.676	0.025	0.626	0.726	0.601	0.751	3.72%	7.44%	11.16%	0.642	0.710
S, wt. %	4.44	0.091	4.26	4.62	4.16	4.71	2.06%	4.11%	6.17%	4.22	4.66

SI unit equivalents: ppm (parts per million;  $1 \times 10^{-6}$ )  $\equiv$  mg/kg; wt. % (weight per cent)  $\equiv$  % (mass fraction).

Note 1: intervals may appear asymmetric due to rounding.

Note 2: the number of decimal places quoted does not imply accuracy of the certified value to this level but are given to minimise rounding errors when calculating 2SD and 3SD windows.

## PARTICIPATING LABORATORIES

1. Actlabs, Ancaster, Ontario, Canada
2. ALS, Brisbane, QLD, Australia
3. ALS, Lima, Peru
4. ALS, Loughrea, Galway, Ireland
5. ALS, Malaga, WA, Australia
6. ALS, Vancouver, BC, Canada
7. American Assay Laboratories, Sparks, Nevada, USA
8. ARGETEST Mineral Processing, Ankara, Central Anatolia, Turkey
9. Bureau Veritas Commodities Canada Ltd, Vancouver, BC, Canada
10. Bureau Veritas Geoanalytical, Perth, WA, Australia
11. Bureau Veritas Minerals, Ankara, Central Anatolia, Turkey
12. CERTIMIN, Lima, Peru
13. Inspectorate (BV), Lima, Peru
14. Intertek, Cupang, Muntinlupa, Philippines
15. Intertek, Perth, WA, Australia
16. Intertek, Townsville, QLD, Australia
17. Intertek Genalysis, Adelaide, SA, Australia
18. MSALABS, Vancouver, BC, Canada
19. Paragon Geochemical Laboratories, Sparks, Nevada, USA
20. PT Geoservices Ltd, Cikarang, Jakarta Raya, Indonesia
21. PT Intertek Utama Services, Jakarta Timur, DKI Jakarta, Indonesia
22. SGS, Ankara, Anatolia, Turkey
23. SGS Canada Inc., Vancouver, BC, Canada
24. Shiva Analyticals Ltd, Bangalore North, Karnataka, India
25. Skyline Assayers & Laboratories, Tucson, Arizona, USA
26. Stewart Assay & Environmental Laboratories LLC, Kara-Balta, Chüy, Kyrgyzstan

**Please note: To preserve anonymity, the above numbered alphabetical list of participating laboratories does not correspond with the Lab ID numbering on the scatter plots below.**

Figure 1. Ag by 4-Acid Digestion in OREAS 931c

SPC.1879.RR1.OREAS 931c.1.4-Acid.Ag.Lab.241030.145409.SN

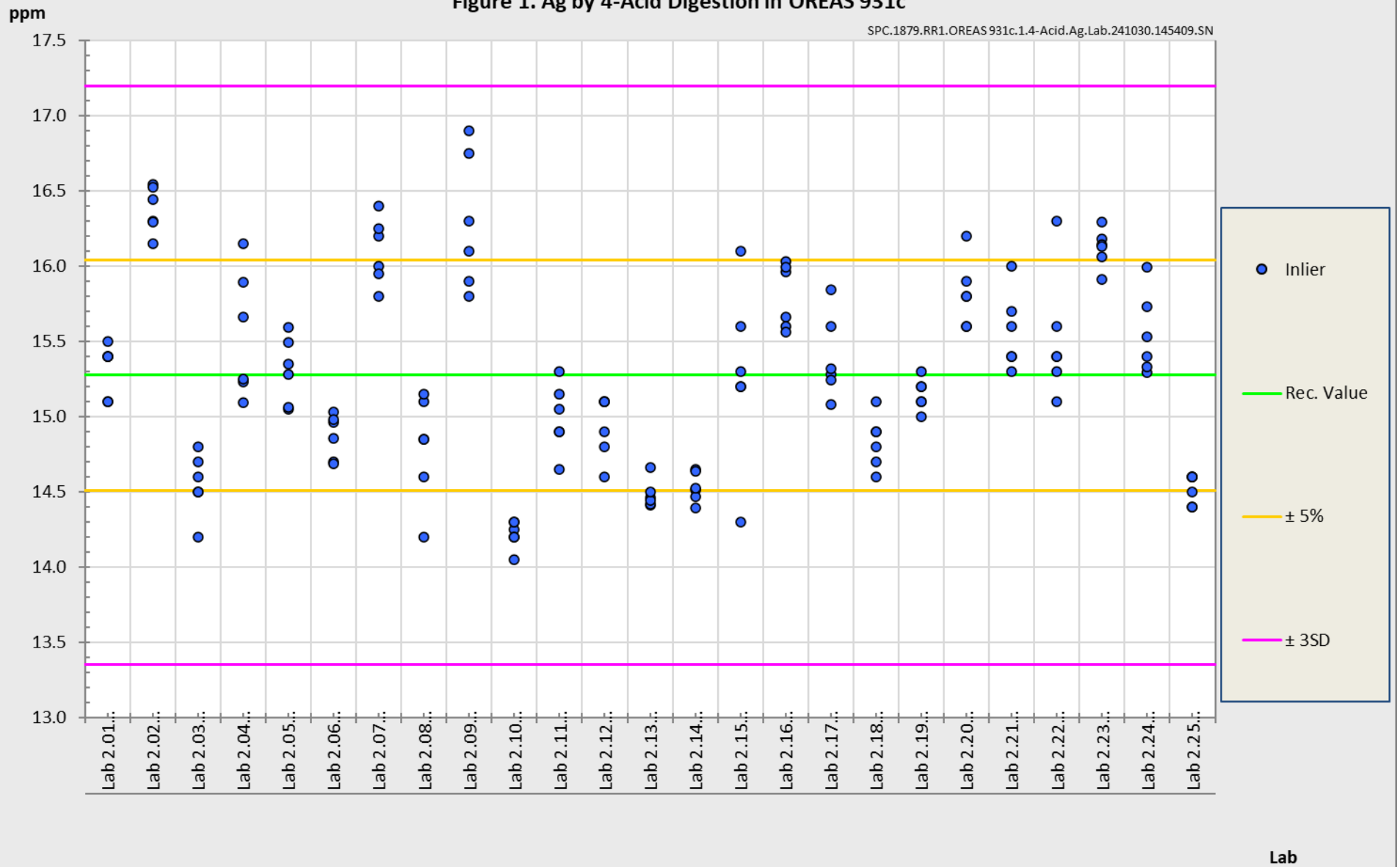
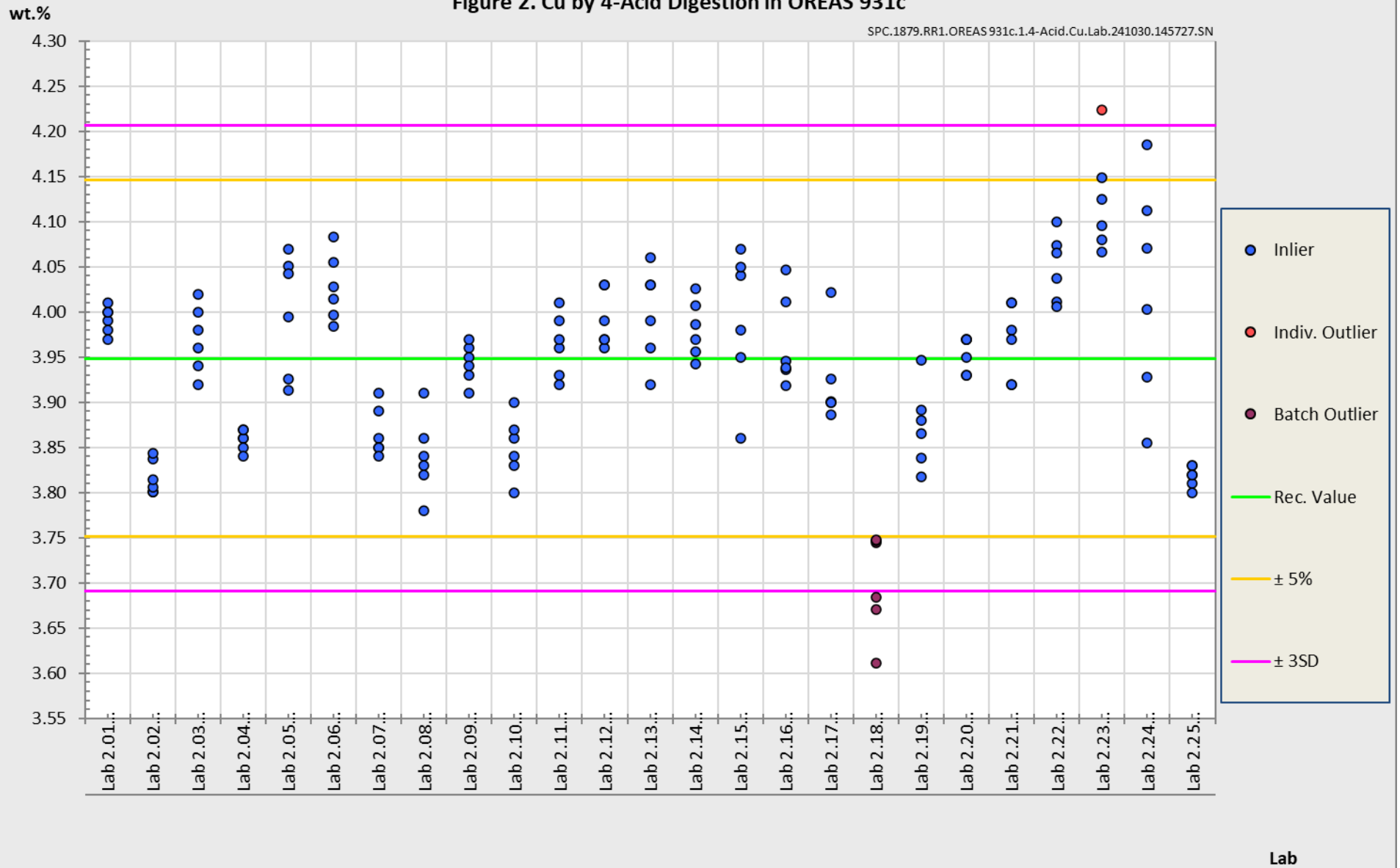


Figure 2. Cu by 4-Acid Digestion in OREAS 931c

SPC.1879.RR1.OREAS 931c.1.4-Acid.Cu.Lab.241030.145727.SN



## PREPARER AND SUPPLIER

Certified reference material OREAS 931c is prepared, certified and supplied by:



ORE Research & Exploration Pty Ltd  
37A Hosie Street  
Bayswater North VIC 3153  
AUSTRALIA

Tel: +613-9729 0333  
Fax: +613-9729 8338  
Web: [www.oreas.com](http://www.oreas.com)  
Email: [info@ore.com.au](mailto:info@ore.com.au)

## METROLOGICAL TRACEABILITY

The interlaboratory results that underpin the certified values are metrologically traceable to the international measurement scale (SI) of mass (either as a % mass fraction or as milligrams per kilogram (mg/kg)) [14]. In line with popular use, all data within tables in this certificate are expressed as the mass fraction in either weight percent (wt. %) or parts per million (ppm).

The analytical samples sent to participating laboratories were selected in a manner to be representative of the entire prepared batch of CRM. This representativeness was maintained in each submitted laboratory sample batch and ensures the user that the data is traceable from sample selection through to the analytical results. The systematic sampling method was chosen due to the low risk of overlooking repetitive effects or trends in the batch due to the way the CRM was processed. In line with ISO 17025 [8], each analytical data set received from the participating laboratories has been validated by its assayer through the inclusion of internal reference materials and QC checks during and post analysis.

The participating laboratories were chosen on the basis of their competence (from past performance in interlaboratory programs undertaken by ORE Pty Ltd) for a particular analytical method, analyte or analyte suite and sample matrix. These laboratories are accredited to ISO 17025 for 4-acid digestion (Table 1). The other operationally defined measurands characterised in this certificate (Table 2) are derived from data procured mostly from ISO 17025 accredited laboratories. The certified values presented in this report are calculated from the means of accepted data following robust technical and statistical analysis as detailed in this report.

Guide ISO/TR 16476:2016 [7], section 5.3.1 describes metrological traceability in reference materials as it pertains to the transformation of the measurand. In this section it states, *“Although the determination of the property value itself can be made traceable to appropriate units through, for example, calibration of the measurement equipment used, steps like the transformation of the sample from one physical (chemical) state to another cannot. Such transformations may only be compared with a reference (when available), or among themselves. For some transformations, reference methods have been defined and may be used in certification projects to evaluate the uncertainty associated with such a transformation. In other cases, only a comparison among different laboratories using the same procedure is possible. In this case, it is impossible to demonstrate absence of method bias; therefore, the result is an operationally defined measurand (ISO Guide 33405:2024-05, 9.2.4c) [4].”* Certification takes place on the basis of agreement among operationally defined, independent measurement results.

## COMMUTABILITY

The measurements of the results that underlie the certified values contained in this report were undertaken by methods involving pre-treatment (fusion/digestion) of the sample. This served to reduce the sample to a simple and well understood form permitting calibration using simple solutions of the CRM. Due to these methods being well understood and highly effective, commutability is not an issue for this CRM. All OREAS CRMs are sourced from natural ore minerals meaning they will display similar behaviour as routine 'field' samples in the relevant measurement process. Care should be taken to ensure 'matrix matching' as close as practically achievable. The matrix and mineralisation style of the CRM is described in the 'Source Material' section and users should select appropriate CRMs matching these attributes to the field samples being analysed.

## INTENDED USE

OREAS 931c is intended to cover all activities needed to produce a measurement result. This includes extraction, possible separation steps and the actual measurement process (the signal producing step). OREAS 931c may be used to calibrate the entire procedure by producing a pure substance CRM transformed into a calibration solution.

OREAS 931c is intended for the following uses:

- For the monitoring of laboratory performance in the analysis of analytes reported in Tables 1 and 2 in geological samples;
- For the verification of analytical methods for analytes reported in Tables 1 and 2;
- For the calibration of instruments used in the determination of the concentration of analytes reported in Tables 1 and 2. When a value provided in this certificate is used to calibrate a measurement process, the uncertainty associated with that value should be appropriately propagated into the user's uncertainty calculation. Users can determine an approximation of the standard uncertainty by calculating one fourth of the width of the Expanded Uncertainty interval given in this certificate (Expanded Uncertainty intervals are provided in Tables 1 and 2).

## MINIMUM SAMPLE SIZE

To relate analytical determinations to the values in this certificate, the minimum mass of sample used should match the typical mass that the laboratories used in the interlaboratory (round robin) certification program. This means that different minimum sample masses should be used depending on the operationally defined methodology as follows:

- 4-acid digestion with ICP-OES and/or MS finish:  $\geq 0.25$  g;
- Aqua regia digestion with ICP-OES and/or MS finish:  $\geq 0.5$  g;
- Lithium borate fusion with X-ray fluorescence finish:  $\geq 0.2$  g;
- Loss on Ignition (LOI) at 1000 °C:  $\geq 1$  g;
- Sodium peroxide fusion with ICP-OES and/or MS finish:  $\geq 0.2$  g;
- C and S by infrared combustion furnace/CS analyser:  $\geq 0.1$  g.

## PERIOD OF VALIDITY & STORAGE INSTRUCTIONS

The certification of OREAS 931c remains valid, within the specified measurement uncertainties, until at least June 2039, provided the CRM is handled and stored in accordance with the instructions given below. This certification is nullified if the CRM is any way changed or contaminated.

Store in a clean and cool dry place away from direct sunlight.

Long-term stability will be monitored at appropriate intervals and purchasers notified if any changes are observed. The period of validity may well be indefinite and will be reassessed prior to expiry with the aim of extending the validity if possible.

### Single-use sachets

Following analysis of the CRM subsample it is the manufacturers' expectation that any remaining material is discarded. The stability of the material after opening the sachet is not within the scope of proper use. However, if opened sachets are resealed after opening, then under ordinary\* storage conditions the CRM will have a shelf-life beyond ten years.

*\*ordinary storage conditions: means storage not in direct sunlight in a dry, clean, well-ventilated area at temperatures between -5 °C and 50 °C.*

## INSTRUCTIONS FOR HANDLING & CORRECT USE

Pre-homogenisation of the CRM prior to subsampling and analysis is not necessary as there is no particle segregation under transport [12].

Fine powders pose a risk to eyes and lungs and therefore standard precautions including the use of safety glasses and dust masks are advised.

### QC monitoring using multiples of the Standard Deviation (SD)

In the application of SD's in monitoring performance it is important to note that not all laboratories function at the same level of proficiency and that different methods in use at a particular laboratory have differing levels of precision. Each laboratory has its own inherent SD (for a specific concentration level and analyte-method pair) based on the analytical process and this SD is not directly related to the round robin program.

The majority of data generated in the round robin program was produced by a selection of world class laboratories. The SD's thus generated are more constrained than those that would be produced across a randomly selected group of laboratories. To produce more generally achievable SD's the 'pooled' SD's provided in this report include interlaboratory bias. This 'one size fits all' approach may require revision at the discretion of the QC manager concerned following careful scrutiny of QC control charts.

The performance gates shown in Table 6 are intended only to be used as a preliminary guide as to what a laboratory may be able to achieve. Over a period of time monitoring your own laboratory's data for this CRM, SD's should be calculated directly from your own laboratory's process. This will enable you to establish more specific performance gates that are fit for purpose for your application as well as the ability to monitor bias. If your long-term trend analysis shows an average value that is within the 95 % expanded uncertainty then generally there is no cause for concern in regard to bias.



## For use with the aqua regia digestion method

It is important to note that in the analytical industry there is no standardisation of the aqua regia digestion process. This method is a partial empirical digest and differences in recoveries for various analytes are commonplace. These are caused by variations in the digest conditions and can include the ratio of nitric to hydrochloric acids, acid strength, temperatures, leach times and secondary digestions. Recoveries for sulphide-hosted base metal sulphides approach total values, however, other analytes, in particular the lithophile elements, show greater sensitivity to method parameters. This can result in lack of consensus in an inter-laboratory certification program for these elements.

The approach applied here is to report certified values in those instances where reasonable agreement exists amongst a majority of participating laboratories. The results of specific laboratories may differ significantly from the certified values, but will, nonetheless, be valid and reproducible in the context of the specifics of the aqua regia method in use. Users of this reference material should, therefore, be mindful of this limitation when applying the certified values in a quality control program.

## LEGAL NOTICE

Ore Research & Exploration Pty Ltd has prepared and statistically evaluated the property values of this reference material to the best of its ability. The Purchaser by receipt hereof releases and indemnifies Ore Research & Exploration Pty Ltd from and against all liability and costs arising from the use of this material and information.

© COPYRIGHT Ore Research & Exploration Pty Ltd.  
Unauthorised copying, reproduction, storage or dissemination is prohibited.

## QMS CERTIFICATION

ORE Pty Ltd is accredited for compliance with ISO 17034:2016.



ORE Pty Ltd is ISO 9001:2015 certified by Lloyd's Register Quality Assurance Ltd for its quality management system including development, manufacturing, certification and supply of CRMs.



## DOCUMENT HISTORY

Revision No.	Date	Changes applied
0	18 <sup>th</sup> December, 2024	First publication.

## CERTIFYING OFFICER

Craig Hamlyn (B.Sc. Hons - Geology), Technical Manager - ORE P/L

## REFERENCES

- [1] Govett, G.J.S. (1983). Handbook of Exploration Geochemistry, Volume 2: Statistics and Data Analysis in Geochemical Prospecting (Variations of accuracy and precision).
- [2] ISO Guide 30:2015. Terms and definitions used in connection with reference materials.
- [3] ISO Guide 33401:2024-01. Reference materials – Contents of certificates, labels and accompanying documentation.
- [4] ISO Guide 33405:2024-05. Reference materials – Approaches for characterization and assessment of homogeneity and stability.
- [5] ISO Guide 98-3:2008. Guide to the expression of uncertainty in measurement (GUM:1995).
- [6] ISO 16269:2014. Statistical interpretation of data – Part 6: Determination of statistical tolerance intervals.
- [7] ISO/TR 16476:2016, Reference Materials – Establishing and expressing metrological traceability of quantity values assigned to reference materials.
- [8] ISO 17025:2017, General requirements for the competence of testing and calibration laboratories.
- [9] ISO 17034:2016. General requirements for the competence of reference material producers.
- [10] Munsell Rock Color Book (2014). Rock-Color Chart Committee, Geological Society of America (GSA), Minnesota (USA).
- [11] OREAS-BUP-70-09-11: Statistical Analysis - OREAS Evaluation Method.
- [12] OREAS-TN-04-1498: Stability under transport; an experimental study of OREAS CRMs.
- [13] OREAS-TN-05-1674: Long-term storage stability; an experimental study of OREAS CRMs.
- [14] Thompson, A.; Taylor, B.N. (2008); Guide for the Use of the International System of Units (SI); NIST Special Publication 811; U.S. Government Printing Office: Washington, DC; available at: <https://physics.nist.gov/cuu/pdf/sp811.pdf> (accessed Nov 2021).
- [15] Van der Veen A.M.H. et al. (2001). Uncertainty calculations in the certification of reference materials, Accred Qual Assur 6: 290-294.