

CERTIFICATE OF ANALYSIS FOR

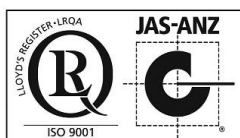
CERTIFIED REFERENCE MATERIAL

OREAS 752b

(Pegmatite Li Ore, Western Australia)



Accredited for compliance with ISO 17034



COA-1862-OREA752b-R2
BUP-70-10-01 Ver:2.0

12 May 2025

Table 1. Certified Values, Uncertainty & Tolerance Intervals for multi-elements by 4-acid digestion in OREAS 752b.

Constituent	Certified Value [†]	95 % Expanded Uncertainty		95 % Tolerance Limits	
		Low	High	Low	High
4-Acid Digestion					
Ag, Silver (ppm)	0.195	0.165	0.225	0.182	0.209
Al, Aluminium (wt.%)	5.15	4.95	5.35	5.04	5.27
As, Arsenic (ppm)	4.19	3.73	4.65	3.90	4.48
Ba, Barium (ppm)	215	207	222	210	219
Be, Beryllium (ppm)	8.41	8.02	8.81	8.22	8.60
Bi, Bismuth (ppm)	0.61	0.54	0.68	0.57	0.65
Ca, Calcium (wt.%)	0.361	0.348	0.374	0.353	0.369
Cd, Cadmium (ppm)	0.11	0.10	0.13	IND	IND
Ce, Cerium (ppm)	15.8	14.6	17.0	15.2	16.4
Co, Cobalt (ppm)	1.95	1.85	2.05	1.87	2.03
Cr, Chromium (ppm)	16.6	15.0	18.2	16.0	17.2
Cs, Caesium (ppm)	124	120	128	121	126
Cu, Copper (ppm)	15.8	15.1	16.6	15.1	16.5
Dy, Dysprosium (ppm)	0.86	0.74	0.97	0.80	0.91
Er, Erbium (ppm)	0.34	0.29	0.39	0.31	0.37
Eu, Europium (ppm)	0.30	0.26	0.34	0.28	0.32
Fe, Iron (wt.%)	0.773	0.753	0.793	0.759	0.787
Ga, Gallium (ppm)	35.6	34.2	36.9	34.9	36.2
Gd, Gadolinium (ppm)	1.20	1.13	1.28	1.10	1.31
Hf, Hafnium (ppm)	1.58	1.48	1.68	1.51	1.65
Ho, Holmium (ppm)	0.14	0.12	0.15	IND	IND
K, Potassium (wt.%)	1.02	0.99	1.05	1.01	1.04
La, Lanthanum (ppm)	7.51	6.84	8.18	7.17	7.86
Li, Lithium (wt.%)	0.724	0.703	0.745	0.716	0.732
Li ₂ O, Lithium oxide (wt.%)	1.56	1.51	1.60	1.54	1.58
Lu, Lutetium (ppm)	0.038	0.027	0.049	IND	IND
Mg, Magnesium (wt.%)	0.171	0.163	0.178	0.167	0.174
Mn, Manganese (wt.%)	0.100	0.098	0.102	0.098	0.102
Mo, Molybdenum (ppm)	2.63	2.46	2.80	2.52	2.74
Na, Sodium (wt.%)	0.521	0.503	0.539	0.511	0.530
Nb, Niobium (ppm)	73	70	75	71	75
Nd, Neodymium (ppm)	7.11	6.40	7.81	6.89	7.32
Ni, Nickel (ppm)	7.97	7.62	8.32	7.64	8.29
P, Phosphorus (wt.%)	0.044	0.042	0.046	0.043	0.045
Pb, Lead (ppm)	6.23	5.83	6.63	5.98	6.47

SI unit equivalents: ppm (parts per million; 1×10^{-6}) \equiv mg/kg; wt.% (weight per cent) \equiv % (mass fraction).

[†]The operationally defined measurand meets the requirements of ISO 17034 and all participating laboratories comply with the requirements of ISO 17025.

Note: intervals may appear asymmetric due to rounding. IND = indeterminate (due to limited reading resolution of the methods employed).

Table 1 continued.

Constituent	Certified Value [†]	95 % Expanded Uncertainty		95 % Tolerance Limits	
		Low	High	Low	High
4-Acid Digestion continued					
Pr, Praseodymium (ppm)	1.92	1.74	2.11	1.80	2.04
Rb, Rubidium (ppm)	950	915	985	933	966
Re, Rhenium (ppm)	< 0.002	IND	IND	IND	IND
S, Sulphur (wt.%)	0.030	0.029	0.032	0.029	0.032
Sb, Antimony (ppm)	0.56	0.51	0.60	0.51	0.60
Sc, Scandium (ppm)	1.79	1.66	1.92	1.65	1.94
Sm, Samarium (ppm)	1.45	1.28	1.63	1.39	1.52
Sn, Tin (ppm)	78	74	81	75	80
Sr, Strontium (ppm)	45.3	43.0	47.6	44.0	46.5
Ta, Tantalum (ppm)	190	181	199	184	196
Tb, Terbium (ppm)	0.18	0.16	0.19	IND	IND
Th, Thorium (ppm)	3.38	3.15	3.60	3.18	3.57
Ti, Titanium (wt.%)	0.085	0.082	0.087	0.083	0.087
Tl, Thallium (ppm)	6.50	6.27	6.73	6.32	6.67
Tm, Thulium (ppm)	0.043	0.029	0.057	IND	IND
U, Uranium (ppm)	1.86	1.65	2.08	1.74	1.99
V, Vanadium (ppm)	13.1	12.4	13.8	12.6	13.6
W, Tungsten (ppm)	3.98	3.52	4.45	3.62	4.34
Y, Yttrium (ppm)	3.49	3.31	3.66	3.33	3.65
Yb, Ytterbium (ppm)	0.28	0.26	0.30	0.26	0.30
Zn, Zinc (ppm)	134	130	138	131	137
Zr, Zirconium (ppm)	19.5	18.4	20.7	18.6	20.4

SI unit equivalents: ppm (parts per million; 1×10^{-6}) \equiv mg/kg; wt.% (weight per cent) \equiv % (mass fraction).

Note: intervals may appear asymmetric due to rounding.

[†]The operationally defined measurand meets the requirements of ISO 17034 and all participating laboratories comply with the requirements of ISO 17025.

IND = indeterminate (due to limited reading resolution of the methods employed. For practical purposes the 95% Expanded Uncertainty can be set between zero and a two times multiple of the upper bound/non-detect limit value).

Table 2. Certified Values, Uncertainty & Tolerance Intervals for other measurands in OREAS 752b.

Constituent	Certified Value	95 % Expanded Uncertainty		95 % Tolerance Limits	
		Low	High	Low	High
Borate / Peroxide Fusion ICP					
Al, Aluminium (wt.%)	5.33	5.21	5.44	5.22	5.44
B, Boron (ppm)	57	46	69	50	65
Ba, Barium (ppm)	213	205	222	208	219
Be, Beryllium (ppm)	8.52	7.25	9.78	IND	IND
Bi, Bismuth (ppm)	0.65	0.50	0.80	IND	IND
Ca, Calcium (wt.%)	0.359	0.315	0.403	0.339	0.378
Ce, Cerium (ppm)	16.1	14.7	17.5	15.2	17.0
Co, Cobalt (ppm)	2.03	1.78	2.28	IND	IND
Cs, Caesium (ppm)	121	116	125	119	122
Cu, Copper (ppm)	20.4	16.4	24.4	IND	IND
Dy, Dysprosium (ppm)	1.21	1.08	1.34	1.08	1.34
Er, Erbium (ppm)	0.63	0.50	0.76	0.56	0.71
Eu, Europium (ppm)	0.28	0.23	0.33	0.25	0.31
Fe, Iron (wt.%)	0.783	0.759	0.807	0.766	0.799
Ga, Gallium (ppm)	36.2	34.3	38.0	35.4	37.0
Gd, Gadolinium (ppm)	1.42	1.19	1.65	1.28	1.57
Ge, Germanium (ppm)	2.26	1.40	3.11	IND	IND
Ho, Holmium (ppm)	0.23	0.20	0.26	0.20	0.25
In, Indium (ppm)	< 0.2	IND	IND	IND	IND
K, Potassium (wt.%)	1.06	1.00	1.11	1.02	1.10
La, Lanthanum (ppm)	8.00	7.38	8.62	7.51	8.50
Li, Lithium (wt.%)	0.734	0.719	0.748	0.720	0.748
Li ₂ O, Lithium oxide (wt.%)	1.58	1.55	1.61	1.55	1.61
Lu, Lutetium (ppm)	0.083	0.049	0.116	IND	IND
Mg, Magnesium (wt.%)	0.173	0.161	0.184	0.160	0.185
Mn, Manganese (wt.%)	0.102	0.098	0.106	0.100	0.104
Mo, Molybdenum (ppm)	2.98	2.30	3.66	IND	IND
Nb, Niobium (ppm)	72	68	75	69	74
Nd, Neodymium (ppm)	7.40	6.57	8.24	6.94	7.87
P, Phosphorus (wt.%)	0.041	0.038	0.044	0.039	0.042
Pr, Praseodymium (ppm)	1.88	1.64	2.12	1.77	1.99
Rb, Rubidium (ppm)	941	908	973	927	954
Re, Rhenium (ppm)	< 0.1	IND	IND	IND	IND
Sb, Antimony (ppm)	0.60	0.40	0.79	IND	IND
Si, Silicon (wt.%)	38.58	37.46	39.70	37.74	39.43
Sm, Samarium (ppm)	1.54	1.32	1.77	1.33	1.75
Sn, Tin (ppm)	112	106	118	109	115

SI unit equivalents: ppm (parts per million; 1×10^{-6}) \equiv mg/kg; wt.% (weight per cent) \equiv % (mass fraction).

Note: intervals may appear asymmetric due to rounding.

IND = indeterminate (due to limited reading resolution of the methods employed. For practical purposes the 95% Expanded Uncertainty can be set between zero and a two times multiple of the upper bound/non-detect limit value).

Table 2 continued.

Constituent	Certified Value	95 % Expanded Uncertainty		95 % Tolerance Limits	
		Low	High	Low	High
Borate / Peroxide Fusion ICP continued					
Sr, Strontium (ppm)	52	46	57	49	55
Ta, Tantalum (ppm)	200	192	207	194	206
Tb, Terbium (ppm)	0.22	0.19	0.24	0.19	0.24
Th, Thorium (ppm)	3.38	3.13	3.62	3.15	3.60
Ti, Titanium (wt.%)	0.086	0.079	0.094	IND	IND
Tl, Thallium (ppm)	6.65	6.29	7.01	6.42	6.88
Tm, Thulium (ppm)	0.090	0.070	0.109	IND	IND
U, Uranium (ppm)	2.10	1.88	2.31	1.86	2.34
V, Vanadium (ppm)	14.2	11.7	16.8	IND	IND
W, Tungsten (ppm)	4.13	3.21	5.06	IND	IND
Y, Yttrium (ppm)	6.35	5.63	7.07	5.66	7.05
Yb, Ytterbium (ppm)	0.59	0.45	0.72	IND	IND
Zn, Zinc (ppm)	125	115	135	120	130
Borate Fusion XRF					
Al ₂ O ₃ , Aluminium(III) oxide (wt.%)	10.19	10.05	10.32	10.11	10.26
BaO, Barium oxide (ppm)	224	132	316	193	256
CaO, Calcium oxide (wt.%)	0.506	0.495	0.516	0.496	0.515
Cr ₂ O ₃ , Chromium(III) oxide (ppm)	< 100	IND	IND	IND	IND
Fe ₂ O ₃ , Iron(III) oxide (wt.%)	1.13	1.11	1.14	1.11	1.14
K ₂ O, Potassium oxide (wt.%)	1.23	1.21	1.25	1.22	1.25
MgO, Magnesium oxide (wt.%)	0.294	0.281	0.307	0.286	0.303
MnO, Manganese oxide (wt.%)	0.133	0.125	0.141	0.129	0.137
Na ₂ O, Sodium oxide (wt.%)	0.709	0.686	0.733	0.691	0.728
Nb, Niobium (ppm)	75	61	89	IND	IND
P ₂ O ₅ , Phosphorus(V) oxide (wt.%)	0.097	0.090	0.105	0.095	0.100
Rb, Rubidium (ppm)	894	790	998	833	954
SiO ₂ , Silicon dioxide (wt.%)	83.21	82.72	83.71	82.66	83.77
Sn, Tin (ppm)	94	57	130	IND	IND
SO ₃ , Sulphur trioxide (wt.%)	0.075	0.068	0.083	0.068	0.082
TiO ₂ , Titanium dioxide (wt.%)	0.143	0.132	0.154	0.139	0.146
Zn, Zinc (ppm)	134	111	156	IND	IND
Zr, Zirconium (ppm)	65	53	78	IND	IND
Thermogravimetry					
LOI ¹⁰⁰⁰ , Loss On Ignition @1000°C (wt.%)	0.761	0.722	0.799	0.732	0.789

SI unit equivalents: ppm (parts per million; 1×10^{-6}) \equiv mg/kg; wt.% (weight per cent) \equiv % (mass fraction).

Note: intervals may appear asymmetric due to rounding.

IND = indeterminate (due to limited reading resolution of the methods employed. For practical purposes the 95 % Expanded Uncertainty can be set between zero and a two times multiple of the upper bound/non-detect limit value).

Table 3. Indicative Values for OREAS 752b.

Constituent	Unit	Value	Constituent	Unit	Value	Constituent	Unit	Value
4-Acid Digestion								
B	ppm	< 10	Hg	ppm	< 1	Se	ppm	0.75
Ge	ppm	0.15	In	ppm	0.028	Te	ppm	0.074
Peroxide Fusion ICP								
Ag	ppm	< 10	Hg	ppm	< 5	Sc	ppm	< 5
As	ppm	< 100	Na	wt.%	0.580	Se	ppm	< 10
Cd	ppm	< 10	Ni	ppm	22.8	Te	ppm	< 1
Cr	ppm	28.3	Pb	ppm	6.16	Zr	ppm	66
Hf	ppm	2.55	S	wt.%	0.032			
Borate Fusion XRF								
Ag	ppm	0.154	Hf	ppm	< 80	Sm	ppm	1.60
As	ppm	6.29	Ho	ppm	0.24	SrO	ppm	75
Be	ppm	7.83	In	ppm	< 0.1	Ta	ppm	182
Bi	ppm	< 100	La	ppm	34.3	Tb	ppm	0.22
Ce	ppm	14.7	Lu	ppm	0.098	Te	ppm	< 0.1
Co	ppm	< 100	Mo	ppm	< 50	Th	ppm	18.4
Cs	ppm	118	Nd	ppm	6.90	Tl	ppm	6.23
CuO	ppm	33.0	NiO	ppm	25.7	Tm	ppm	0.097
Dy	ppm	1.17	Pb	ppm	< 50	U	ppm	7.50
Er	ppm	0.63	Pr	ppm	1.93	V ₂ O ₅	ppm	23.7
Eu	ppm	0.28	Re	ppm	< 0.1	W	ppm	< 10
Ga	ppm	34.8	Sb	ppm	< 50	Y	ppm	24.2
Gd	ppm	1.41	Sc	ppm	3.17	Yb	ppm	0.63
H ₂ O-	wt.%	0.144	Se	ppm	1.50			
Aqua Regia Digestion								
Cs	ppm	121						

SI unit equivalents: ppm (parts per million; 1×10^{-6}) \equiv mg/kg; wt.% (weight per cent) \equiv % (mass fraction).

Note: the number of significant figures reported is not a reflection of the level of certainty of stated values. They are instead an artefact of ORE's in-house CRM-specific LIMS.

TABLE OF CONTENTS

INTRODUCTION	8
SOURCE MATERIAL.....	8
COMMINUTION AND HOMOGENISATION PROCEDURES	8
PHYSICAL PROPERTIES	9
ANALYTICAL PROGRAM.....	9
STATISTICAL ANALYSIS.....	10
Certified Values and their uncertainty intervals	10
Indicative (uncertified) values.....	10
Homogeneity Evaluation	11
PERFORMANCE GATES	12
PARTICIPATING LABORATORIES.....	16
PREPARER AND SUPPLIER	16
METROLOGICAL TRACEABILITY	19
COMMUTABILITY	19
INTENDED USE	20
MINIMUM SAMPLE SIZE	20
PERIOD OF VALIDITY & STORAGE INSTRUCTIONS.....	20
INSTRUCTIONS FOR HANDLING & CORRECT USE.....	21
LEGAL NOTICE	21
DOCUMENT HISTORY	22
CERTIFYING OFFICER.....	22
QMS CERTIFICATION	22
REFERENCES	22

LIST OF TABLES

Table 1. Certified Values, Uncertainty & Tolerance Intervals for multi-elements by 4-acid digestion in OREAS 752b.	2
Table 2. Certified Values, Uncertainty & Tolerance Intervals for other measurands in OREAS 752b.....	4
Table 3. Indicative Values for OREAS 752b.....	6
Table 4. Physical properties of OREAS 752b.....	9
Table 5. Indicative mineralogy of OREAS 752b based on semi-quantitative XRD analysis.....	9
Table 6. Performance Gates for OREAS 752b.....	12

LIST OF FIGURES

Figure 1. Li ₂ O by 4-Acid digestion in OREAS 752b	17
Figure 2. Li ₂ O by borate / peroxide fusion ICP in OREAS 752b	18

INTRODUCTION

OREAS reference materials are intended to provide a low-cost method of evaluating and improving the quality of analysis of geological samples. To the geologist they provide a means of implementing quality control in analytical data sets generated in exploration from the grass roots level through to prospect evaluation, and in grade control at mining operations. To the analyst they provide an effective means of calibrating analytical equipment, assessing new techniques and routinely monitoring in-house procedures. OREAS reference materials enable users to successfully achieve process control of these tasks because the observed variance from repeated analysis has its origin almost exclusively in the analytical process rather than the reference material itself. In evaluating laboratory performance with this CRM, the section headed 'Instructions for correct use' should be read carefully.

Table 1 (generated from data supplied by laboratories all accredited to ISO 17025 for 4-acid digestion) and Table 2 (generated from data supplied by laboratories mostly accredited to ISO 17025) provide the certified values and their associated 95 % expanded uncertainty and tolerance intervals, Table 3 shows indicative values including major and trace element characterisation, Table 4 provides some indicative physical properties, Table 5 provides indicative mineralogy based on semi-quantitative XRD analysis and Table 6 presents the performance gate intervals for all certified values.

Tabulated results of all analytes together with uncorrected means, medians, standard deviations, relative standard deviations and per cent deviation of lab means from the corrected mean of means (PDM³) are presented in the detailed certification data for this CRM (**OREAS 752b-DataPack.1.2.241028_145928.xlsx**). Results are also presented in scatter plots for Li₂O (wt.%) by 4-acid digestion and borate/peroxide fusion with ICP in Figures 1 and 2 respectively, together with $\pm 3SD$ (magenta) and $\pm 5\%$ (yellow) control lines and certified value (green line). Accepted individual results are coloured blue and individual and dataset outliers are identified in red and violet, respectively.

SOURCE MATERIAL

OREAS 752b was prepared from a blend of spodumene concentrate derived from the processing of lithium pegmatite ores sourced from the Greenbushes area of southwest Western Australia, Londonderry lithium-pegmatite ore (containing elevated levels of lithium, rubidium, caesium, tin and tantalum), barren granodiorite and quartz. The barren granodiorite was sourced from the mafic, S-Type, Late Devonian Bulla Granodiorite complex located in northern Melbourne, Australia.

COMMINUTION AND HOMOGENISATION PROCEDURES

The material constituting OREAS 752b was prepared in the following manner:

- Drying of materials to constant mass at 105 °C;
- Crushing and milling of the barren granodiorite and quartz to > 98 % minus 75 µm;
- Crushing and milling of ore and spodumene concentrate to 100 % minus 30 µm;
- Check analysis of ore and spodumene concentrate for contained Li concentration;
- Blending the ore, concentrate and barren materials in appropriate proportions to achieve the desired Li grade;

- Homogenisation using OREAS' novel processing technologies;
- Packaging in 10 g units in laminated foil pouches and 500 g units in plastic wide-mouth jars.

PHYSICAL PROPERTIES

OREAS 752b was tested at ORE Research & Exploration Pty Ltd's onsite facility for various physical properties. Table 4 presents these findings that should be used for informational purposes only.

Table 4. Physical properties of OREAS 752b.

Bulk Density (kg/m ³)	Moisture (wt.%)	Munsell Notation [‡]	Munsell Color [‡]
698	0.32	N8	Very Light Gray

[‡]The Munsell Rock Color Chart helps geologists and archeologists communicate with colour more effectively by cross-referencing ISCC-NBS colour names with unique Munsell alpha-numeric colour notations for rock colour samples.

MINERALOGY

The semi-quantitative XRD results shown in Table 5 below were undertaken by ALS Metallurgy in Balcatta, Western Australia. The results have been normalised to 100 % and represent the relative proportion of crystalline material. Totals greater or less than 100 % are due to rounding errors. Some amorphous material might be present. 'Clay mineral' appears to be mainly illite, and/or vermiculite. 'Kandite group' appears to be mainly kaolinite. Mica group minerals can be Li-bearing. A trace of petalite might be present. A trace of magnetite and/or gibbsite may be present

Table 5. Indicative mineralogy of OREAS 752b based on semi-quantitative XRD analysis.

Mineral / Mineral Group	% (mass ratio)
Spodumene	14
Clay mineral	1
Chlorite	1
Kandite group	< 1
Annite - biotite - phlogopite	15
Muscovite	1
Plagioclase	6
K-feldspar and/or rutile	3
Cordierite	-
Quartz	59

ANALYTICAL PROGRAM

Twenty-eight commercial analytical laboratories participated in the program to certify the elements reported in Table 1 and 2. The following methods were employed:

- Lithium borate or sodium peroxide fusion with full suite ICP-OES and ICP-MS elemental packages (up to 24 laboratories depending on the element);

- 4-acid ($\text{HNO}_3\text{-HF-HClO}_4\text{-HCl}$) digestion with full suite ICP-OES and ICP-MS elemental packages (up to 26 laboratories depending on the element);
- Lithium borate fusion whole rock analysis package by X-ray fluorescence (up to 20 laboratories depending on the element);
- Thermogravimetry: Loss on Ignition (LOI) at 1000 °C (8 laboratories used a thermogravimetric analyser, 8 laboratories included LOI with their fusion package and 5 laboratories used a conventional muffle furnace).

For the round robin program twelve 1 kg test units were taken at predetermined intervals during the bagging stage, immediately following homogenisation and are considered representative of the entire prepared batch. The six samples received by each laboratory were obtained by taking two 15 g scoop splits from each of three separate 1 kg test units. This format enabled a nested ANOVA treatment of the results to evaluate homogeneity, i.e. to ascertain whether between-unit variance is greater than within-unit variance (see 'Homogeneity Evaluation' section below).

STATISTICAL ANALYSIS

Certified Values and their uncertainty intervals (Tables 1 and 2) have been determined for each analyte following removal of individual, laboratory dataset (batch) and 3SD outliers (single iteration).

For individual outliers within a laboratory batch the z-score test is used in combination with a second method that determines the per cent deviation of the individual value from the batch median. Outliers in general are selected on the basis of z-scores > 2.5 and with per cent deviations (i) > 3 and (ii) more than three times the average absolute per cent deviation for the batch. Each laboratory data set mean is tested for outlying status based on z-score discrimination and rejected if > 2.5 . After individual and laboratory data set (batch) outliers have been eliminated a non-iterative 3 standard deviation filter is applied, with those values lying outside this window also relegated to outlying status. However, while statistics are taken into account, the exercise of a statistician's prerogative plays a significant role in identifying outliers.

95 % Expanded Uncertainty provides a 95 % probability that the true value of the analyte under consideration lies between the upper and lower limits and is calculated according to the method outlined in ISO 98-3:2008 [5, 15]. All known or suspected sources of bias have been investigated or taken into account.

Indicative (uncertified) values (Table 3) are present where the number of laboratories reporting a particular analyte is insufficient (< 5) to support certification or where interlaboratory consensus is poor. This data is intended for 'informational purposes' only.

Standard Deviation intervals (see Table 6, 'Performance Gates') provide an indication of a level of performance that might reasonably be expected from a laboratory being monitored by this CRM in a QA/QC program. They take into account errors attributable to measurement uncertainty and CRM variability. For an effective CRM the contribution of the latter should be negligible in comparison to measurement errors. The Standard Deviation values include all sources of measurement uncertainty: between-lab variance, within-run variance (precision errors) and CRM variability.

The SD for each analyte's certified value is calculated from the same filtered data set used to determine the certified value, i.e., after removal of all individual, lab dataset (batch) and 3SD outliers (single iteration). These outliers can only be removed after the absolute homogeneity of the CRM has been independently established, i.e., the outliers must be confidently deemed to be analytical rather than arising from inhomogeneity of the CRM. ***The standard deviation is then calculated for each analyte from the pooled accepted analyses generated from the certification program.***

Homogeneity Evaluation

The tolerance limits (ISO 16269:2014) shown in Tables 1 and 2 were determined using an analysis of precision errors method and are considered a conservative estimate of true homogeneity. The meaning of tolerance limits may be illustrated for lithium (Li_2O) by 4-acid digestion with ICP, where 99 % of the time ($1-\alpha=0.99$) at least 95 % of subsamples ($p=0.95$) will have concentrations lying between 1.54 and 1.58 wt.%. Put more precisely, this means that if the same number of subsamples were taken and analysed in the same manner repeatedly, 99 % of the tolerance intervals so constructed would cover at least 95 % of the total population, and 1 % of the tolerance intervals would cover less than 95 % of the total population. ***Please note that tolerance limits pertain to the homogeneity of the CRM only and should not be used as control limits for laboratory performance.***

Based on the statistical analysis of the results of the interlaboratory certification program, it can be concluded that OREAS 752b is fit-for-purpose as a certified reference material (see 'Intended Use' below).

PERFORMANCE GATES

Table 6 below shows intervals calculated for two and three standard deviations. As a guide these intervals may be regarded as warning or rejection for multiple 2SD outliers, or rejection for individual 3SD outliers in QC monitoring, although their precise application should be at the discretion of the QC manager concerned (also see 'Intended Use' section below). Westgard Rules extend the basics of single-rule QC monitoring using multi-rules (for more information visit www.westgard.com/mltrule.htm). A second method utilises a 5 % window calculated directly from the certified value.

Standard deviation is also shown in relative percent for one, two and three relative standard deviations (1RSD, 2RSD and 3RSD) to facilitate an appreciation of the magnitude of these numbers and a comparison with the 5 % window. Caution should be exercised when concentration levels approach lower limits of detection of the analytical methods employed as performance gates calculated from standard deviations tend to be excessively wide whereas those determined by the 5 % method are too narrow. One approach used at commercial laboratories is to set the acceptance criteria at twice the detection level (DL) $\pm 10\%$.

i.e., Certified Value $\pm 10\% \pm 2DL$ [1].

Table 6. Performance Gates for OREAS 752b.

Constituent	Certified Value	Absolute Standard Deviations					Relative Standard Deviations			5 % window	
		1SD	2SD Low	2SD High	3SD Low	3SD High	1RSD	2RSD	3RSD	Low	High
4-Acid Digestion											
Ag, ppm	0.195	0.037	0.121	0.269	0.084	0.306	18.95%	37.91%	56.86%	0.185	0.205
Al, wt. %	5.15	0.265	4.62	5.68	4.36	5.95	5.14%	10.29%	15.43%	4.89	5.41
As, ppm	4.19	0.307	3.58	4.80	3.27	5.11	7.33%	14.65%	21.98%	3.98	4.40
Ba, ppm	215	10	195	234	185	244	4.58%	9.16%	13.74%	204	225
Be, ppm	8.41	0.388	7.64	9.19	7.25	9.58	4.61%	9.23%	13.84%	7.99	8.83
Bi, ppm	0.61	0.048	0.51	0.70	0.47	0.75	7.83%	15.67%	23.50%	0.58	0.64
Ca, wt. %	0.361	0.014	0.333	0.389	0.319	0.403	3.89%	7.78%	11.68%	0.343	0.379
Cd, ppm	0.11	0.03	0.06	0.17	0.03	0.20	24.55%	49.11%	73.66%	0.11	0.12
Ce, ppm	15.8	1.43	12.9	18.7	11.5	20.1	9.06%	18.12%	27.18%	15.0	16.6
Co, ppm	1.95	0.095	1.76	2.14	1.67	2.24	4.88%	9.75%	14.63%	1.85	2.05
Cr, ppm	16.6	2.9	10.7	22.5	7.8	25.4	17.70%	35.39%	53.09%	15.8	17.4
Cs, ppm	124	6	112	136	106	142	4.83%	9.66%	14.50%	118	130
Cu, ppm	15.8	0.89	14.0	17.6	13.2	18.5	5.64%	11.29%	16.93%	15.0	16.6
Dy, ppm	0.86	0.12	0.62	1.09	0.50	1.21	13.82%	27.63%	41.45%	0.81	0.90
Er, ppm	0.34	0.05	0.25	0.43	0.20	0.48	13.36%	26.73%	40.09%	0.32	0.36
Eu, ppm	0.30	0.05	0.20	0.39	0.16	0.44	15.74%	31.48%	47.22%	0.28	0.31
Fe, wt. %	0.773	0.026	0.722	0.824	0.696	0.850	3.31%	6.61%	9.92%	0.734	0.812
Ga, ppm	35.6	2.06	31.4	39.7	29.4	41.7	5.79%	11.57%	17.36%	33.8	37.3
Gd, ppm	1.20	0.052	1.10	1.31	1.05	1.36	4.34%	8.68%	13.02%	1.14	1.26
Hf, ppm	1.58	0.082	1.41	1.74	1.33	1.82	5.23%	10.46%	15.69%	1.50	1.66
Ho, ppm	0.14	0.011	0.11	0.16	0.10	0.17	8.30%	16.59%	24.89%	0.13	0.14
K, wt. %	1.02	0.033	0.95	1.09	0.92	1.12	3.24%	6.48%	9.71%	0.97	1.07

SI unit equivalents: ppm (parts per million; 1×10^{-6}) \equiv mg/kg; wt. % (weight per cent) \equiv % (mass fraction).

Note 1: intervals may appear asymmetric due to rounding.

Note 2: the number of decimal places quoted does not imply accuracy of the certified value to this level but are given to minimise rounding errors when calculating 2SD and 3SD windows.

Table 6 continued.

Constituent	Certified Value	Absolute Standard Deviations					Relative Standard Deviations			5 % window	
		1SD	2SD Low	2SD High	3SD Low	3SD High	1RSD	2RSD	3RSD	Low	High
4-Acid Digestion continued											
La, ppm	7.51	0.92	5.67	9.36	4.74	10.29	12.30%	24.60%	36.91%	7.14	7.89
Li, wt. %	0.724	0.030	0.664	0.784	0.635	0.814	4.13%	8.25%	12.38%	0.688	0.760
Li ₂ O, wt. %	1.56	0.064	1.43	1.69	1.37	1.75	4.13%	8.25%	12.38%	1.48	1.64
Lu, ppm	0.038	0.009	0.021	0.055	0.012	0.064	22.63%	45.26%	67.90%	0.036	0.040
Mg, wt. %	0.171	0.009	0.152	0.189	0.143	0.198	5.37%	10.74%	16.10%	0.162	0.179
Mn, wt. %	0.100	0.003	0.094	0.106	0.091	0.109	3.13%	6.26%	9.39%	0.095	0.105
Mo, ppm	2.63	0.124	2.38	2.88	2.26	3.00	4.70%	9.41%	14.11%	2.50	2.76
Na, wt. %	0.521	0.022	0.476	0.565	0.454	0.588	4.30%	8.59%	12.89%	0.495	0.547
Nb, ppm	73	2.3	68	77	66	80	3.23%	6.45%	9.68%	69	76
Nd, ppm	7.11	0.72	5.67	8.54	4.95	9.26	10.12%	20.23%	30.35%	6.75	7.46
Ni, ppm	7.97	0.471	7.03	8.91	6.56	9.38	5.91%	11.83%	17.74%	7.57	8.37
P, wt. %	0.044	0.002	0.039	0.049	0.037	0.052	5.56%	11.12%	16.68%	0.042	0.046
Pb, ppm	6.23	0.538	5.15	7.30	4.61	7.84	8.64%	17.29%	25.93%	5.92	6.54
Pr, ppm	1.92	0.166	1.59	2.25	1.42	2.42	8.63%	17.27%	25.90%	1.83	2.02
Rb, ppm	950	44	862	1038	818	1082	4.64%	9.27%	13.91%	902	997
Re, ppm	< 0.002	IND	IND	IND	IND	IND	IND	IND	IND	IND	IND
S, wt. %	0.030	0.001	0.028	0.033	0.026	0.034	4.36%	8.71%	13.07%	0.029	0.032
Sb, ppm	0.56	0.038	0.48	0.63	0.44	0.67	6.80%	13.60%	20.40%	0.53	0.58
Sc, ppm	1.79	0.149	1.49	2.09	1.34	2.24	8.31%	16.63%	24.94%	1.70	1.88
Sm, ppm	1.45	0.16	1.14	1.77	0.98	1.93	10.91%	21.82%	32.74%	1.38	1.53
Sn, ppm	78	4.0	70	85	66	89	5.13%	10.26%	15.39%	74	81
Sr, ppm	45.3	1.84	41.6	48.9	39.8	50.8	4.06%	8.11%	12.17%	43.0	47.5
Ta, ppm	190	15	161	220	146	234	7.75%	15.50%	23.25%	181	200
Tb, ppm	0.18	0.012	0.15	0.20	0.14	0.21	7.04%	14.07%	21.11%	0.17	0.18
Th, ppm	3.38	0.223	2.93	3.82	2.71	4.05	6.60%	13.20%	19.80%	3.21	3.55
Ti, wt. %	0.085	0.004	0.077	0.093	0.073	0.097	4.65%	9.30%	13.95%	0.080	0.089
Tl, ppm	6.50	0.361	5.77	7.22	5.41	7.58	5.56%	11.11%	16.67%	6.17	6.82
Tm, ppm	0.043	0.007	0.028	0.057	0.021	0.064	16.67%	33.34%	50.01%	0.041	0.045
U, ppm	1.86	0.180	1.50	2.22	1.32	2.40	9.68%	19.37%	29.05%	1.77	1.96
V, ppm	13.1	0.52	12.1	14.2	11.5	14.7	3.99%	7.97%	11.96%	12.5	13.8
W, ppm	3.98	0.48	3.03	4.93	2.55	5.41	11.97%	23.93%	35.90%	3.78	4.18
Y, ppm	3.49	0.198	3.09	3.88	2.89	4.08	5.67%	11.33%	17.00%	3.31	3.66
Yb, ppm	0.28	0.03	0.21	0.35	0.18	0.38	12.23%	24.47%	36.70%	0.27	0.29
Zn, ppm	134	7	121	147	114	153	4.86%	9.73%	14.59%	127	141
Zr, ppm	19.5	1.29	16.9	22.1	15.7	23.4	6.61%	13.22%	19.83%	18.6	20.5
Borate / Peroxide Fusion ICP											
Al, wt. %	5.33	0.123	5.08	5.57	4.96	5.70	2.31%	4.61%	6.92%	5.06	5.59
B, ppm	57	10	38	77	29	86	16.61%	33.21%	49.82%	55	60
Ba, ppm	213	10	194	233	184	242	4.52%	9.04%	13.56%	203	224
Be, ppm	8.52	0.749	7.02	10.01	6.27	10.76	8.80%	17.60%	26.40%	8.09	8.94
Bi, ppm	0.65	0.10	0.46	0.84	0.36	0.94	14.89%	29.77%	44.66%	0.62	0.68
Ca, wt. %	0.359	0.038	0.283	0.434	0.245	0.472	10.52%	21.04%	31.56%	0.341	0.377
Ce, ppm	16.1	1.09	13.9	18.3	12.8	19.4	6.79%	13.58%	20.37%	15.3	16.9

SI unit equivalents: ppm (parts per million; 1×10^{-6}) \equiv mg/kg; wt. % (weight per cent) \equiv % (mass fraction).

Note 1: intervals may appear asymmetric due to rounding; IND = indeterminate.

Note 2: the number of decimal places quoted does not imply accuracy of the certified value to this level but are given to minimise rounding errors when calculating 2SD and 3SD windows.

Table 6 continued.

Constituent	Certified Value	Absolute Standard Deviations					Relative Standard Deviations			5 % window	
		1SD	2SD Low	2SD High	3SD Low	3SD High	1RSD	2RSD	3RSD	Low	High
Borate / Peroxide Fusion ICP continued											
Co, ppm	2.03	0.160	1.71	2.35	1.55	2.51	7.89%	15.77%	23.66%	1.93	2.13
Cs, ppm	121	4	112	129	108	133	3.44%	6.89%	10.33%	115	127
Cu, ppm	20.4	5.1	10.2	30.6	5.1	35.7	25.07%	50.14%	75.21%	19.4	21.4
Dy, ppm	1.21	0.12	0.97	1.45	0.85	1.58	10.00%	20.00%	30.00%	1.15	1.27
Er, ppm	0.63	0.08	0.47	0.79	0.39	0.88	12.85%	25.71%	38.56%	0.60	0.66
Eu, ppm	0.28	0.04	0.20	0.36	0.16	0.40	14.23%	28.46%	42.68%	0.27	0.29
Fe, wt.%	0.783	0.026	0.732	0.834	0.706	0.860	3.27%	6.53%	9.80%	0.744	0.822
Ga, ppm	36.2	1.95	32.3	40.1	30.3	42.0	5.40%	10.80%	16.20%	34.4	38.0
Gd, ppm	1.42	0.17	1.09	1.76	0.93	1.92	11.67%	23.33%	35.00%	1.35	1.50
Ge, ppm	2.26	0.45	1.35	3.17	0.90	3.62	20.04%	40.09%	60.13%	2.15	2.37
Ho, ppm	0.23	0.019	0.19	0.26	0.17	0.28	8.42%	16.83%	25.25%	0.22	0.24
In, ppm	< 0.2	IND	IND	IND	IND	IND	IND	IND	IND	IND	IND
K, wt.%	1.06	0.061	0.94	1.18	0.88	1.24	5.76%	11.53%	17.29%	1.01	1.11
La, ppm	8.00	0.513	6.98	9.03	6.47	9.54	6.40%	12.81%	19.21%	7.60	8.40
Li, wt.%	0.734	0.017	0.700	0.768	0.683	0.784	2.31%	4.61%	6.92%	0.697	0.770
Li2O, wt.%	1.58	0.036	1.51	1.65	1.47	1.69	2.31%	4.61%	6.92%	1.50	1.66
Lu, ppm	0.083	0.025	0.033	0.132	0.009	0.157	29.76%	59.51%	89.27%	0.079	0.087
Mg, wt.%	0.173	0.010	0.153	0.192	0.143	0.202	5.74%	11.48%	17.22%	0.164	0.181
Mn, wt.%	0.102	0.004	0.094	0.110	0.090	0.114	3.98%	7.95%	11.93%	0.097	0.107
Mo, ppm	2.98	0.52	1.95	4.02	1.43	4.54	17.36%	34.73%	52.09%	2.83	3.13
Nb, ppm	72	2.8	66	77	63	80	3.87%	7.75%	11.62%	68	75
Nd, ppm	7.40	0.607	6.19	8.62	5.58	9.22	8.20%	16.41%	24.61%	7.03	7.77
P, wt.%	0.041	0.005	0.030	0.052	0.025	0.057	13.27%	26.55%	39.82%	0.039	0.043
Pr, ppm	1.88	0.188	1.51	2.26	1.32	2.45	9.99%	19.98%	29.97%	1.79	1.98
Rb, ppm	941	39	863	1018	824	1057	4.14%	8.27%	12.41%	894	988
Re, ppm	< 0.1	IND	IND	IND	IND	IND	IND	IND	IND	IND	IND
Sb, ppm	0.60	0.08	0.43	0.77	0.35	0.85	14.07%	28.15%	42.22%	0.57	0.63
Si, wt.%	38.58	1.834	34.91	42.25	33.08	44.08	4.75%	9.51%	14.26%	36.65	40.51
Sm, ppm	1.54	0.129	1.29	1.80	1.16	1.93	8.37%	16.73%	25.10%	1.47	1.62
Sn, ppm	112	7	98	125	92	132	6.05%	12.10%	18.16%	106	118
Sr, ppm	52	5	41	63	36	68	10.49%	20.99%	31.48%	49	55
Ta, ppm	200	6	188	212	182	218	3.04%	6.09%	9.13%	190	210
Tb, ppm	0.22	0.02	0.17	0.26	0.15	0.28	10.81%	21.62%	32.43%	0.20	0.23
Th, ppm	3.38	0.280	2.82	3.94	2.54	4.22	8.30%	16.60%	24.90%	3.21	3.54
Ti, wt.%	0.086	0.005	0.076	0.096	0.071	0.101	5.86%	11.72%	17.59%	0.082	0.091
Tl, ppm	6.65	0.177	6.30	7.01	6.12	7.18	2.66%	5.32%	7.98%	6.32	6.98
Tm, ppm	0.090	0.013	0.063	0.116	0.049	0.130	14.98%	29.95%	44.93%	0.085	0.094
U, ppm	2.10	0.21	1.67	2.52	1.46	2.73	10.14%	20.27%	30.41%	1.99	2.20
V, ppm	14.2	2.4	9.5	19.0	7.1	21.3	16.65%	33.31%	49.96%	13.5	14.9
W, ppm	4.13	0.64	2.86	5.41	2.22	6.05	15.45%	30.89%	46.34%	3.93	4.34
Y, ppm	6.35	0.68	5.00	7.70	4.33	8.38	10.63%	21.26%	31.89%	6.03	6.67
Yb, ppm	0.59	0.08	0.42	0.75	0.34	0.84	14.14%	28.27%	42.41%	0.56	0.62
Zn, ppm	125	12	101	149	89	161	9.55%	19.10%	28.65%	119	132

SI unit equivalents: ppm (parts per million; 1×10^{-6}) \equiv mg/kg; wt.% (weight per cent) \equiv % (mass fraction).

Note 1: intervals may appear asymmetric due to rounding; IND = indeterminate.

Note 2: the number of decimal places quoted does not imply accuracy of the certified value to this level but are given to minimise rounding errors when calculating 2SD and 3SD windows.

Table 6 continued.

Constituent	Certified Value	Absolute Standard Deviations					Relative Standard Deviations			5 % window	
		1SD	2SD Low	2SD High	3SD Low	3SD High	1RSD	2RSD	3RSD	Low	High
Borate Fusion XRF											
Al ₂ O ₃ , wt. %	10.19	0.198	9.79	10.58	9.59	10.78	1.94%	3.89%	5.83%	9.68	10.69
BaO, ppm	224	43	138	311	94	355	19.35%	38.69%	58.04%	213	236
CaO, wt. %	0.506	0.012	0.481	0.530	0.468	0.543	2.46%	4.93%	7.39%	0.480	0.531
Cr ₂ O ₃ , ppm	< 100	IND	IND	IND	IND	IND	IND	IND	IND	IND	IND
Fe ₂ O ₃ , wt. %	1.13	0.017	1.09	1.16	1.07	1.18	1.55%	3.09%	4.64%	1.07	1.18
K ₂ O, wt. %	1.23	0.022	1.19	1.28	1.16	1.30	1.80%	3.59%	5.39%	1.17	1.29
MgO, wt. %	0.294	0.020	0.254	0.334	0.234	0.354	6.82%	13.64%	20.46%	0.279	0.309
MnO, wt. %	0.133	0.005	0.123	0.144	0.117	0.149	3.97%	7.93%	11.90%	0.126	0.140
Na ₂ O, wt. %	0.709	0.025	0.660	0.759	0.636	0.783	3.46%	6.92%	10.39%	0.674	0.745
Nb, ppm	75	9	58	92	49	101	11.48%	22.96%	34.44%	71	79
P ₂ O ₅ , wt. %	0.097	0.007	0.083	0.112	0.076	0.119	7.33%	14.67%	22.00%	0.092	0.102
Rb, ppm	894	52	789	998	737	1050	5.85%	11.70%	17.54%	849	938
SiO ₂ , wt. %	83.21	0.900	81.41	85.01	80.51	85.91	1.08%	2.16%	3.24%	79.05	87.37
Sn, ppm	94	24	46	142	22	165	25.54%	51.09%	76.63%	89	98
SO ₃ , wt. %	0.075	0.008	0.058	0.092	0.050	0.100	11.10%	22.21%	33.31%	0.071	0.079
TiO ₂ , wt. %	0.143	0.009	0.125	0.160	0.117	0.169	6.04%	12.08%	18.12%	0.136	0.150
Zn, ppm	134	16	102	165	87	181	11.78%	23.55%	35.33%	127	141
Zr, ppm	65	9	48	83	39	92	13.28%	26.56%	39.84%	62	69
Thermogravimetry											
LOI ¹⁰⁰⁰ , wt. %	0.761	0.071	0.619	0.902	0.548	0.973	9.31%	18.62%	27.94%	0.723	0.799

SI unit equivalents: ppm (parts per million; 1×10^{-6}) \equiv mg/kg; wt.% (weight per cent) \equiv % (mass fraction).

Note 1: intervals may appear asymmetric due to rounding; IND = indeterminate.

Note 2: the number of decimal places quoted does not imply accuracy of the certified value to this level but are given to minimise rounding errors when calculating 2SD and 3SD windows.

PARTICIPATING LABORATORIES

1. Actlabs, Ancaster, Ontario, Canada
2. African Natural Resources & Mines Ltd, Suleja, Niger State, Nigeria
3. AGAT Laboratories, Calgary, Alberta, Canada
4. ALS, Johannesburg, South Africa
5. ALS, Lima, Peru
6. ALS, Loughrea, Galway, Ireland
7. ALS, Malaga, WA, Australia
8. ALS, Vancouver, BC, Canada
9. ARGETEST Mineral Processing, Ankara, Central Anatolia, Turkey
10. Bureau Veritas Commodities Canada Ltd, Vancouver, BC, Canada
11. CERTIMIN, Lima, Peru
12. CRS Laboratories Oy, Kempele, Northern Ostrobothnia, Finland
13. Inspectorate (BV), Lima, Peru
14. Intertek, Cupang, Muntinlupa, Philippines
15. Intertek, Perth, WA, Australia
16. Intertek, Townsville, QLD, Australia
17. Labwest Minerals Analysis, Perth, WA, Australia
18. MSALABS, Vancouver, BC, Canada
19. Ontario Geological Survey, Sudbury, Ontario, Canada
20. PT Geoservices Ltd, Cikarang, Jakarta Raya, Indonesia
21. PT Intertek Utama Services, Jakarta Timur, DKI Jakarta, Indonesia
22. Saskatchewan Research Council, Saskatoon, Saskatchewan, Canada
23. SGS, Randfontein, Gauteng, South Africa
24. SGS Australia Mineral Services, Perth, WA, Australia
25. SGS Canada Inc., Vancouver, BC, Canada
26. SGS del Peru, Lima, Peru
27. Shiva Analyticals Ltd, Bangalore North, Karnataka, India
28. Stewart Assay & Environmental Laboratories LLC, Kara-Balta, Chüy, Kyrgyzstan

Please note: To preserve anonymity, the above numbered alphabetical list of participating laboratories does not correspond with the Lab ID numbering on the scatter plots below.

PREPARER AND SUPPLIER

Certified reference material OREAS 752b is prepared, certified and supplied by:

ORE Research & Exploration Pty Ltd
37A Hosie Street
Bayswater North VIC 3153
AUSTRALIA

Tel: +613-9729 0333
Web: www.oreas.com
Email: info@ore.com.au

Figure 1. Li2O by 4-Acid Digestion in OREAS 752b

SPC.1862.RR1.OREAS 752b.1.4-Acid.Li2O.Lab.240722.233014.SN

wt. %

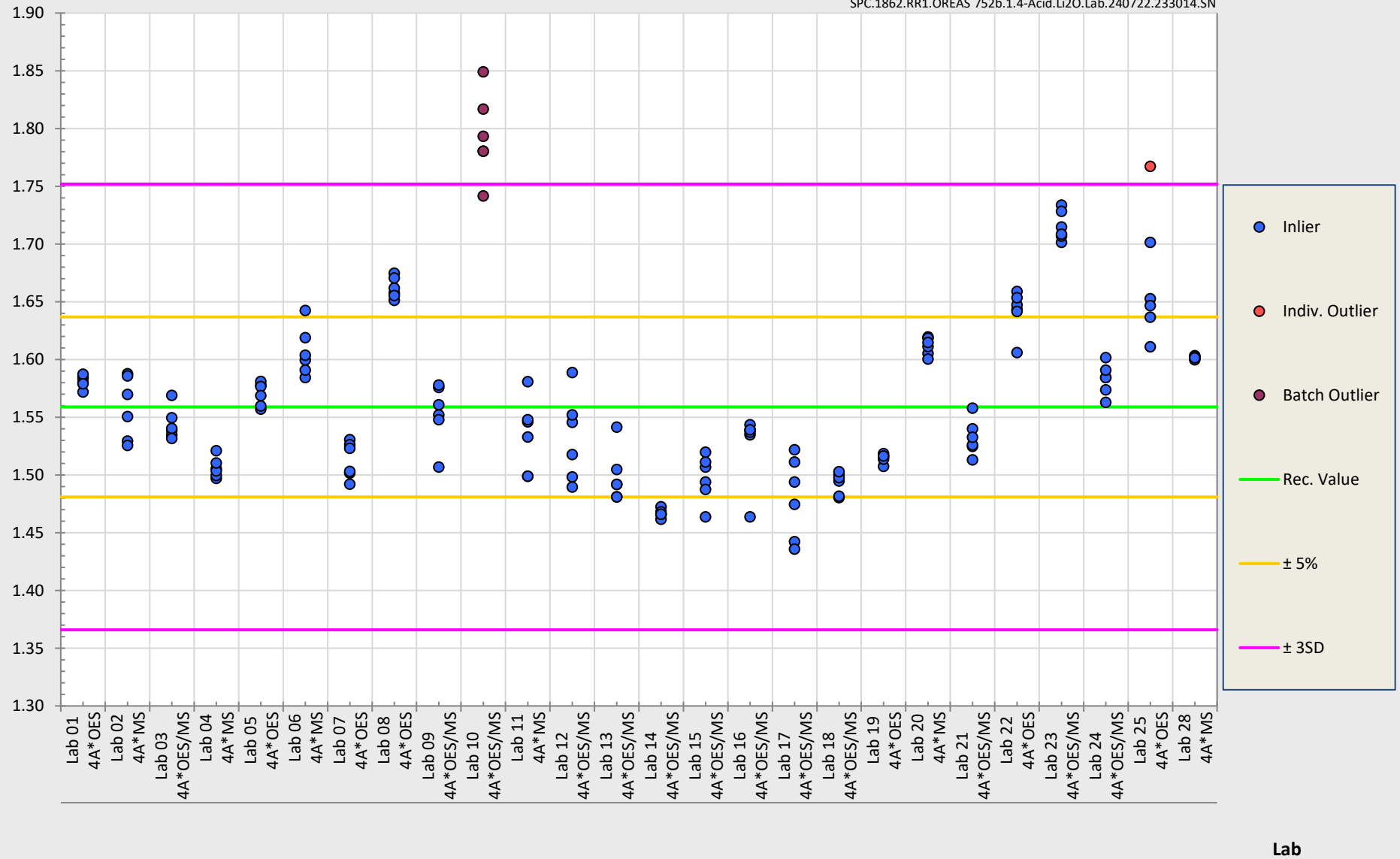
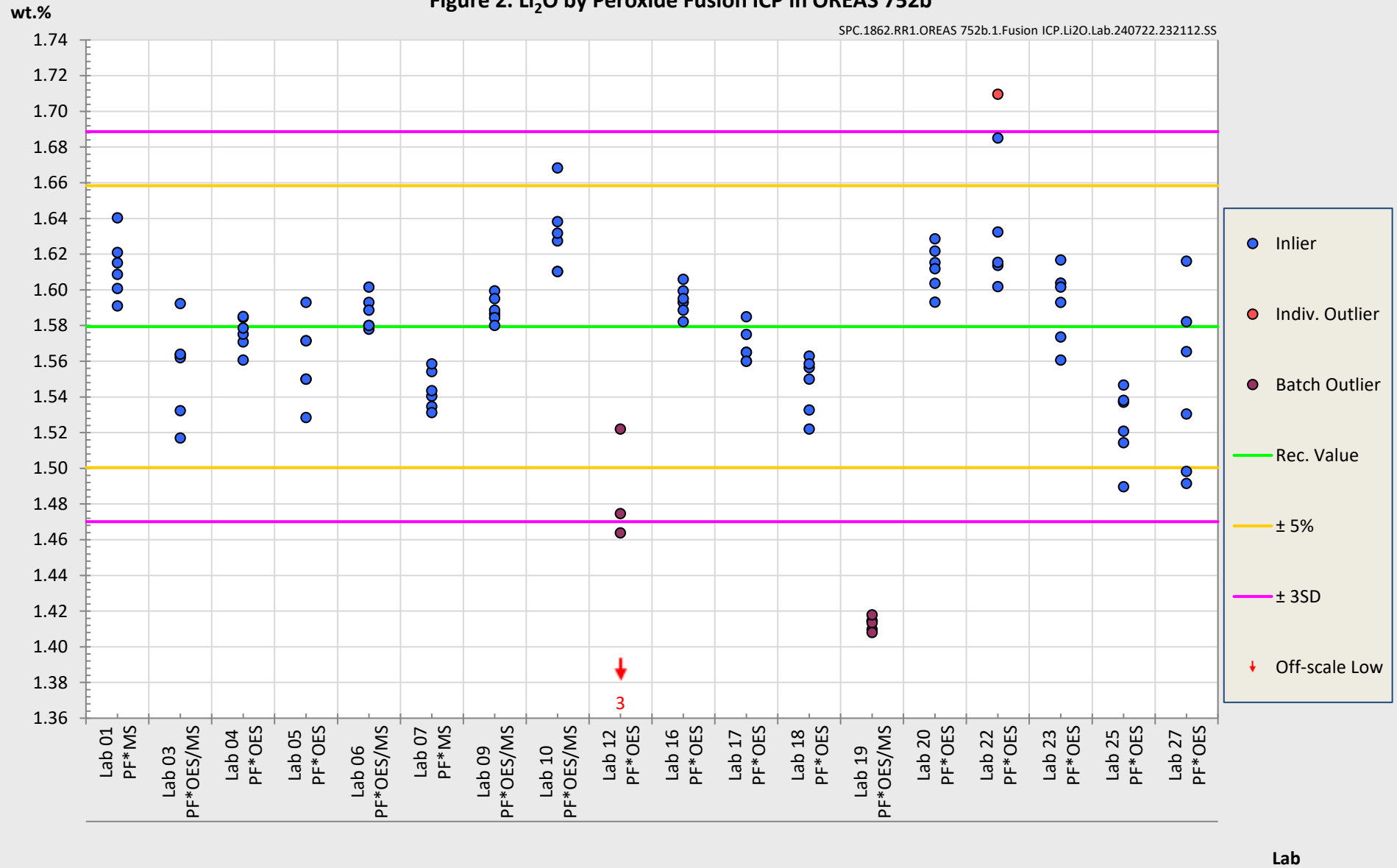


Figure 2. Li₂O by Peroxide Fusion ICP in OREAS 752b

SPC.1862.RR1.OREAS 752b.1.Fusion ICP.Li2O.Lab.240722.232112.SS



METROLOGICAL TRACEABILITY

The interlaboratory results that underpin the certified values are metrologically traceable to the international measurement scale (SI) of mass (either as a % mass fraction or as milligrams per kilogram (mg/kg)) [14]. In line with popular use, all data within tables in this certificate are expressed as the mass fraction in either weight percent (wt.%) or parts per million (ppm).

The analytical samples sent to participating laboratories were selected in a manner to be representative of the entire prepared batch of CRM. This representativeness was maintained in each submitted laboratory sample batch and ensures the user that the data is traceable from sample selection through to the analytical results. The systematic sampling method was chosen due to the low risk of overlooking repetitive effects or trends in the batch due to the way the CRM was processed. In line with ISO 17025 [8], each analytical data set received from the participating laboratories has been validated by its assayer through the inclusion of internal reference materials and QC checks during and post analysis.

The participating laboratories were chosen on the basis of their competence (from past performance in interlaboratory programs undertaken by ORE Pty Ltd) for a particular analytical method, analyte or analyte suite and sample matrix. These laboratories are accredited to ISO 17025 for 4-acid digestion (Table 1). The other operationally defined measurands characterised in this certificate (Table 2) are derived from data procured mostly from ISO 17025 accredited laboratories. The certified values presented in this report are calculated from the means of accepted data following robust technical and statistical analysis as detailed in this report.

Guide ISO/TR 16476:2016 [7], section 5.3.1 describes metrological traceability in reference materials as it pertains to the transformation of the measurand. In this section it states, *“Although the determination of the property value itself can be made traceable to appropriate units through, for example, calibration of the measurement equipment used, steps like the transformation of the sample from one physical (chemical) state to another cannot. Such transformations may only be compared with a reference (when available), or among themselves. For some transformations, reference methods have been defined and may be used in certification projects to evaluate the uncertainty associated with such a transformation. In other cases, only a comparison among different laboratories using the same procedure is possible. In this case, it is impossible to demonstrate absence of method bias; therefore, the result is an operationally defined measurand (ISO Guide 33405:2024-05, 9.2.4c) [4].”* Certification takes place on the basis of agreement among operationally defined, independent measurement results.

COMMUTABILITY

The measurements of the results that underlie the certified values contained in this report were undertaken by methods involving pre-treatment (fusion/digestion) of the sample. This served to reduce the sample to a simple and well understood form permitting calibration using simple solutions of the CRM. Due to these methods being well understood and highly effective, commutability is not an issue for this CRM. All OREAS CRMs are sourced from natural ore minerals meaning they will display similar behaviour as routine ‘field’ samples in the relevant measurement process. Care should be taken to ensure ‘matrix matching’ as close as practically achievable. The matrix and mineralisation style of the CRM is described in the ‘Source Material’ section and users should select appropriate CRMs matching these attributes to the field samples being analysed.

INTENDED USE

OREAS 752b is intended to cover all activities needed to produce a measurement result. This includes extraction, possible separation steps and the actual measurement process (the signal producing step). OREAS 752b may be used to calibrate the entire procedure by producing a pure substance CRM transformed into a calibration solution.

OREAS 752b is intended for the following uses:

- For the monitoring of laboratory performance in the analysis of analytes reported in Tables 1 and 2 in geological samples;
- For the verification of analytical methods for analytes reported in Tables 1 and 2;
- For the calibration of instruments used in the determination of the concentration of analytes reported in Tables 1 and 2. When a value provided in this certificate is used to calibrate a measurement process, the uncertainty associated with that value should be appropriately propagated into the user's uncertainty calculation. Users can determine an approximation of the standard uncertainty by calculating one fourth of the width of the Expanded Uncertainty interval given in this certificate (Expanded Uncertainty intervals are provided in Tables 1 and 2).

MINIMUM SAMPLE SIZE

To relate analytical determinations to the values in this certificate, the minimum mass of sample used should match the typical mass that the laboratories used in the interlaboratory (round robin) certification program. This means that different minimum sample masses should be used depending on the operationally defined methodology as follows:

- Lithium Borate / Sodium peroxide fusion with ICP-OES and/or MS finish: ≥ 0.2 g;
- Borate fusion with X-ray fluorescence finish: ≥ 0.2 g;
- Loss on Ignition (LOI) at 1000 °C: ≥ 1 g;
- Multi-elements by 4-acid digestion with ICP-OES and/or MS finish: ≥ 0.25 g.

PERIOD OF VALIDITY & STORAGE INSTRUCTIONS

The certification of OREAS 752b remains valid, within the specified measurement uncertainties, until at least February 2039, provided the CRM is handled and stored in accordance with the instructions given below. This certification is nullified if the CRM is any way changed or contaminated.

Store in a clean and cool dry place away from direct sunlight.

Long-term stability will be monitored at appropriate intervals and purchasers notified if any changes are observed. The period of validity may well be indefinite and will be reassessed prior to expiry with the aim of extending the validity if possible.

Single-use sachets

OREAS 752b is packaged in single-use laminated foil sachets. Following analysis, it is the manufacturer's expectation that any remaining material is discarded. It is the user's responsibility to prevent contamination and avoid prolonged exposure of the sample to the atmosphere prior to analysis.

Repeat-use packaging (e.g., 500 g plastic jars)

After taking a subsample, users should replace the lid of the jar promptly and securely to prevent accidental spills and airborne contamination. OREAS 752b contains a non-hygroscopic* matrix with an indicative value for moisture provided to enable users to check for changes to stored material by determining moisture in the user's laboratory and comparing the result to the value in Table 4 in this certificate.

The stability of the CRM in regard to oxidation from the breakdown of sulphide minerals to sulphates is negligible given its low sulphur concentration (~0.03 wt.% S).

*A non-hygroscopic matrix means exposure to atmospheres significantly different, in terms of temperature and humidity, from the climate during manufacturing should have negligible impact on the precision of results. Hygroscopic moisture is the amount of adsorbed moisture (weakly held H₂O- molecules on the surface of exposed material) following exposure to the local atmosphere. Usually, equilibration of material to the local atmosphere will only occur if the material is spread into a thin (~2mm thick) layer and left exposed for a period of 2 hours.

INSTRUCTIONS FOR HANDLING & CORRECT USE

Pre-homogenisation of the CRM prior to subsampling and analysis is not necessary as there is no particle segregation under transport [12].

Fine powders pose a risk to eyes and lungs and therefore standard precautions including the use of safety glasses and dust masks are advised.

QC monitoring using multiples of the Standard Deviation (SD)

In the application of SD's in monitoring performance it is important to note that not all laboratories function at the same level of proficiency and that different methods in use at a particular laboratory have differing levels of precision. Each laboratory has its own inherent SD (for a specific concentration level and analyte-method pair) based on the analytical process and this SD is not directly related to the round robin program.

The majority of data generated in the round robin program was produced by a selection of world class laboratories. The SD's thus generated are more constrained than those that would be produced across a randomly selected group of laboratories. To produce more generally achievable SD's the 'pooled' SD's provided in this report include interlaboratory bias. This 'one size fits all' approach may require revision at the discretion of the QC manager concerned following careful scrutiny of QC control charts.

The performance gates shown in Table 6 are intended only to be used as a preliminary guide as to what a laboratory may be able to achieve. Over a period of time monitoring your own laboratory's data for this CRM, SD's should be calculated directly from your own laboratory's process. This will enable you to establish more specific performance gates that are fit for purpose for your application as well as the ability to monitor bias. If your long-term trend analysis shows an average value that is within the 95 % expanded uncertainty then generally there is no cause for concern in regard to bias.

LEGAL NOTICE

Ore Research & Exploration Pty Ltd has prepared and statistically evaluated the property values of this reference material to the best of its ability. The Purchaser by receipt hereof

releases and indemnifies Ore Research & Exploration Pty Ltd from and against all liability and costs arising from the use of this material and information.

© COPYRIGHT Ore Research & Exploration Pty Ltd.
Unauthorised copying, reproduction, storage or dissemination is prohibited.

DOCUMENT HISTORY

Revision No.	Date	Changes applied
2	12 th May, 2025	Mineralogical data based on semi-quantitative XRD analysis have been newly added (refer to Table 5).
1	28 th October, 2024	Changed Fe ₂ O ₃ to Fe for 4-Acid Digestion and Borate / Peroxide Fusion ICP data in Table 1, 2 & 5.
0	9 th September, 2024	First publication.

CERTIFYING OFFICER



12th May, 2025

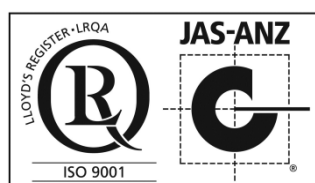
Craig Hamlyn (B.Sc. Hons - Geology), Technical Manager - ORE P/L

QMS CERTIFICATION

ORE Pty Ltd is accredited for compliance with ISO 17034:2016 (Accreditation number 20483).



ORE Pty Ltd is ISO 9001:2015 certified by Lloyd's Register Quality Assurance Ltd for its quality management system including development, manufacturing, certification and supply of CRMs.



REFERENCES

- [1] Govett, G.J.S. (1983). Handbook of Exploration Geochemistry, Volume 2: Statistics and Data Analysis in Geochemical Prospecting (Variations of accuracy and precision).
- [2] ISO Guide 30:2015. Terms and definitions used in connection with reference materials.
- [3] ISO 33401:2024-01. Reference materials – Contents of certificates, labels and accompanying documentation.

- [4] ISO 33405:2024-05. Reference materials – Approaches for characterization and assessment of homogeneity and stability.
- [5] ISO Guide 98-3:2008. Guide to the expression of uncertainty in measurement (GUM:1995).
- [6] ISO 16269:2014. Statistical interpretation of data – Part 6: Determination of statistical tolerance intervals.
- [7] ISO/TR 16476:2016, Reference Materials – Establishing and expressing metrological traceability of quantity values assigned to reference materials.
- [8] ISO 17025:2017, General requirements for the competence of testing and calibration laboratories.
- [9] ISO 17034:2016. General requirements for the competence of reference material producers.
- [10] Munsell Rock Color Book (2014). Rock-Color Chart Committee, Geological Society of America (GSA), Minnesota (USA).
- [11] OREAS-BUP-70-09-11: Statistical Analysis - OREAS Evaluation Method.
- [12] OREAS-TN-04-1498: Stability under transport; an experimental study of OREAS CRMs.
- [13] OREAS-TN-05-1674: Long-term storage stability; an experimental study of OREAS CRMs.
- [14] Thompson, A.; Taylor, B.N.; Guide for the Use of the International System of Units (SI); NIST Special Publication 811; U.S. Government Printing Office: Washington, DC (2008); available at: <https://physics.nist.gov/cuu/pdf/sp811.pdf> (accessed Nov 2021).
- [15] Van der Veen AMH and Pauwels, J. (2001). Uncertainty calculations in the certification of reference materials, Accred Qual Assur 6: 290-294.