



ORE RESEARCH & EXPLORATION P/L ABN 28 006 859 856  
37A Hosie Street · Bayswater North · VIC 3153 · AUSTRALIA  
☎ 61 3 9729 0333 📠 61 3 9729 8338  
📧 info@ore.com.au 🌐 www.oreas.com

## CERTIFICATE OF ANALYSIS FOR

## CERTIFIED REFERENCE MATERIAL

# OREAS 251b

## Gold Oxide Ore (Andy Well Gold Mine, Western Australia)

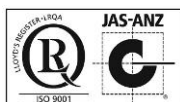
**Table 1. Certified Values and Performance Gates for OREAS 251b.**

Constituent	Certified Value	Absolute Standard Deviations					Relative Standard Deviations			5% window	
		1SD	2SD Low	2SD High	3SD Low	3SD High	1RSD	2RSD	3RSD	Low	High
Pb Fire Assay											
Au, ppm	0.505	0.017	0.471	0.538	0.455	0.555	3.31%	6.62%	9.93%	0.480	0.530
Aqua Regia Digestion (sample mass 10-50 g)											
Au, ppm	0.497	0.022	0.453	0.541	0.431	0.563	4.42%	8.84%	13.26%	0.472	0.522
Cyanide Leach											
Au, ppm	0.491	0.028	0.435	0.546	0.407	0.574	5.68%	11.36%	17.04%	0.466	0.515
Photon Assay (recommended gross mass 490±20)											
Au, ppm	0.499	0.033	0.432	0.565	0.399	0.599	6.68%	13.37%	20.05%	0.474	0.524
4-Acid Digestion											
Ag, ppm	0.123	0.017	0.088	0.157	0.071	0.174	13.97%	27.93%	41.90%	0.116	0.129
Al, wt. %	4.80	0.114	4.57	5.03	4.46	5.14	2.37%	4.74%	7.11%	4.56	5.04
As, ppm	12.9	0.56	11.8	14.0	11.2	14.6	4.36%	8.72%	13.08%	12.2	13.5
Ba, ppm	311	14	284	338	270	352	4.39%	8.77%	13.16%	296	327
Be, ppm	1.25	0.079	1.09	1.41	1.02	1.49	6.29%	12.59%	18.88%	1.19	1.32
Bi, ppm	0.31	0.026	0.26	0.36	0.23	0.39	8.39%	16.78%	25.17%	0.30	0.33

SI unit equivalents: ppm (parts per million;  $1 \times 10^{-6}$ )  $\equiv$  mg/kg; wt. % (weight per cent)  $\equiv$  % (mass fraction).

Note 1: intervals may appear asymmetric due to rounding.

Note 2: the number of decimal places quoted does not imply accuracy of the certified value to this level but are given to minimise rounding errors when calculating 2SD and 3SD windows.



Document: COA-1597-OREAS251b-R5

(Template: BUP-70-10-01 Rev:2.0)

17-July-2025

Table 1 continued.

Constituent	Certified Value	Absolute Standard Deviations					Relative Standard Deviations			5% window	
		1SD	2SD Low	2SD High	3SD Low	3SD High	1RSD	2RSD	3RSD	Low	High
4-Acid Digestion continued											
Ca, wt. %	2.01	0.073	1.86	2.15	1.79	2.23	3.64%	7.28%	10.92%	1.91	2.11
Cd, ppm	0.027	0.008	0.011	0.043	0.003	0.051	29.81%	59.61%	89.42%	0.025	0.028
Ce, ppm	51	4.8	41	60	36	65	9.51%	19.02%	28.53%	48	53
Co, ppm	18.0	0.73	16.5	19.5	15.8	20.2	4.08%	8.16%	12.24%	17.1	18.9
Cr, ppm	115	11	93	137	82	148	9.67%	19.34%	29.01%	109	121
Cs, ppm	2.80	0.161	2.48	3.12	2.31	3.28	5.76%	11.52%	17.28%	2.66	2.94
Cu, ppm	26.7	2.35	22.0	31.4	19.7	33.7	8.79%	17.59%	26.38%	25.4	28.0
Dy, ppm	3.14	0.286	2.57	3.71	2.28	4.00	9.11%	18.22%	27.33%	2.98	3.30
Er, ppm	1.54	0.18	1.18	1.89	1.01	2.07	11.49%	22.97%	34.46%	1.46	1.61
Eu, ppm	1.10	0.055	0.99	1.21	0.94	1.26	4.95%	9.90%	14.86%	1.05	1.16
Fe, wt. %	3.69	0.098	3.49	3.89	3.40	3.99	2.67%	5.34%	8.00%	3.51	3.88
Ga, ppm	12.6	1.03	10.5	14.6	9.5	15.7	8.18%	16.35%	24.53%	11.9	13.2
Gd, ppm	4.03	0.210	3.61	4.45	3.40	4.66	5.20%	10.40%	15.60%	3.83	4.24
Ge, ppm	0.11	0.02	0.07	0.14	0.05	0.16	16.74%	33.48%	50.22%	0.10	0.11
Hf, ppm	2.94	0.266	2.41	3.47	2.14	3.74	9.05%	18.10%	27.14%	2.80	3.09
Ho, ppm	0.57	0.050	0.47	0.67	0.42	0.72	8.77%	17.53%	26.30%	0.54	0.60
In, ppm	0.065	0.005	0.054	0.076	0.049	0.081	8.33%	16.66%	24.99%	0.062	0.068
K, wt. %	1.17	0.036	1.09	1.24	1.06	1.28	3.13%	6.26%	9.39%	1.11	1.22
La, ppm	25.8	1.79	22.3	29.4	20.5	31.2	6.94%	13.88%	20.82%	24.6	27.1
Li, ppm	21.0	1.66	17.7	24.3	16.0	26.0	7.91%	15.81%	23.72%	19.9	22.0
Lu, ppm	0.20	0.014	0.18	0.23	0.16	0.25	6.74%	13.47%	20.21%	0.19	0.21
Mg, wt. %	1.67	0.063	1.54	1.79	1.48	1.85	3.76%	7.52%	11.28%	1.58	1.75
Mn, wt. %	0.042	0.001	0.041	0.044	0.040	0.045	2.24%	4.48%	6.72%	0.040	0.045
Mo, ppm	1.84	0.106	1.63	2.06	1.53	2.16	5.76%	11.52%	17.28%	1.75	1.94
Na, wt. %	0.774	0.024	0.726	0.822	0.703	0.845	3.07%	6.15%	9.22%	0.735	0.813
Nb, ppm	14.4	1.5	11.5	17.3	10.0	18.8	10.12%	20.24%	30.36%	13.7	15.1
Nd, ppm	23.7	0.85	22.0	25.4	21.2	26.3	3.60%	7.20%	10.81%	22.5	24.9
Ni, ppm	72	3.5	65	79	62	83	4.83%	9.66%	14.49%	69	76
P, wt. %	0.070	0.001	0.067	0.072	0.066	0.074	1.84%	3.67%	5.51%	0.066	0.073
Pb, ppm	9.06	0.718	7.63	10.50	6.91	11.22	7.92%	15.84%	23.76%	8.61	9.52
Pr, ppm	6.21	0.245	5.72	6.70	5.48	6.95	3.95%	7.90%	11.86%	5.90	6.52
Rb, ppm	63	2.6	58	69	56	71	4.09%	8.18%	12.26%	60	67
Re, ppm	< 0.002	IND	IND	IND	IND	IND	IND	IND	IND	IND	IND
S, wt. %	0.017	0.004	0.009	0.025	0.005	0.029	23.09%	46.18%	69.27%	0.016	0.018
Sb, ppm	0.79	0.071	0.64	0.93	0.57	1.00	9.04%	18.09%	27.13%	0.75	0.83
Sc, ppm	9.68	0.574	8.53	10.82	7.96	11.40	5.93%	11.86%	17.79%	9.19	10.16
Se, ppm	< 1	IND	IND	IND	IND	IND	IND	IND	IND	IND	IND
Sm, ppm	4.72	0.221	4.28	5.16	4.05	5.38	4.69%	9.38%	14.07%	4.48	4.95
Sn, ppm	3.65	0.327	2.99	4.30	2.67	4.63	8.96%	17.91%	26.87%	3.46	3.83
Sr, ppm	196	8	179	212	171	220	4.19%	8.37%	12.56%	186	206

SI unit equivalents: ppm (parts per million;  $1 \times 10^{-6}$ )  $\equiv$  mg/kg; wt.% (weight per cent)  $\equiv$  % (mass fraction).

Note 1: intervals may appear asymmetric due to rounding; IND: indeterminate.

Note 2: the number of decimal places quoted does not imply accuracy of the certified value to this level but are given to minimise rounding errors when calculating 2SD and 3SD windows.

Table 1 continued.

Constituent	Certified Value	Absolute Standard Deviations					Relative Standard Deviations			5% window	
		1SD	2SD Low	2SD High	3SD Low	3SD High	1RSD	2RSD	3RSD	Low	High
4-Acid Digestion continued											
Ta, ppm	1.03	0.082	0.87	1.20	0.79	1.28	7.96%	15.93%	23.89%	0.98	1.08
Tb, ppm	0.58	0.038	0.51	0.66	0.47	0.69	6.46%	12.91%	19.37%	0.55	0.61
Te, ppm	< 0.05	IND	IND	IND	IND	IND	IND	IND	IND	IND	IND
Th, ppm	8.65	0.589	7.48	9.83	6.89	10.42	6.81%	13.62%	20.43%	8.22	9.09
Ti, wt. %	0.481	0.020	0.440	0.521	0.420	0.542	4.22%	8.44%	12.66%	0.457	0.505
Tl, ppm	0.35	0.021	0.31	0.39	0.29	0.41	6.08%	12.15%	18.23%	0.33	0.37
Tm, ppm	0.21	0.02	0.17	0.26	0.14	0.28	11.16%	22.32%	33.48%	0.20	0.22
U, ppm	1.27	0.079	1.11	1.43	1.03	1.51	6.22%	12.45%	18.67%	1.21	1.34
V, ppm	75	3.5	68	82	64	85	4.73%	9.45%	14.18%	71	79
W, ppm	1.97	0.22	1.54	2.41	1.32	2.63	11.10%	22.20%	33.31%	1.88	2.07
Y, ppm	15.2	1.13	12.9	17.5	11.8	18.6	7.44%	14.87%	22.31%	14.4	16.0
Yb, ppm	1.39	0.16	1.08	1.71	0.92	1.86	11.26%	22.52%	33.78%	1.32	1.46
Zn, ppm	60	3.1	54	66	51	70	5.21%	10.42%	15.63%	57	63
Zr, ppm	108	9	90	126	81	135	8.37%	16.74%	25.11%	102	113
Aqua Regia Digestion											
Ag, ppm	0.104	0.010	0.084	0.125	0.074	0.135	9.83%	19.66%	29.49%	0.099	0.110
Al, wt. %	0.871	0.126	0.620	1.123	0.494	1.248	14.42%	28.84%	43.25%	0.828	0.915
As, ppm	6.01	0.62	4.77	7.25	4.15	7.87	10.31%	20.63%	30.94%	5.71	6.31
B, ppm	< 10	IND	IND	IND	IND	IND	IND	IND	IND	IND	IND
Ba, ppm	67	3.7	59	74	55	78	5.60%	11.20%	16.79%	63	70
Be, ppm	0.39	0.025	0.34	0.44	0.32	0.47	6.28%	12.56%	18.84%	0.37	0.41
Bi, ppm	0.29	0.015	0.26	0.32	0.24	0.33	5.12%	10.25%	15.37%	0.27	0.30
Ca, wt. %	0.593	0.051	0.491	0.696	0.439	0.748	8.66%	17.31%	25.97%	0.564	0.623
Cd, ppm	0.016	0.006	0.005	0.028	0.000	0.034	36.02%	72.04%	108.06 %	0.015	0.017
Ce, ppm	31.2	2.26	26.7	35.7	24.4	38.0	7.25%	14.49%	21.74%	29.6	32.7
Co, ppm	12.2	1.5	9.2	15.2	7.7	16.7	12.31%	24.63%	36.94%	11.6	12.8
Cr, ppm	52	4.7	43	62	38	66	8.98%	17.96%	26.94%	50	55
Cs, ppm	0.72	0.10	0.52	0.92	0.42	1.01	13.67%	27.33%	41.00%	0.68	0.75
Cu, ppm	19.4	1.59	16.3	22.6	14.7	24.2	8.17%	16.34%	24.51%	18.5	20.4
Dy, ppm	1.60	0.084	1.44	1.77	1.35	1.86	5.25%	10.50%	15.76%	1.52	1.68
Er, ppm	0.71	0.054	0.60	0.82	0.55	0.88	7.61%	15.23%	22.84%	0.68	0.75
Eu, ppm	0.63	0.057	0.51	0.74	0.46	0.80	9.04%	18.07%	27.11%	0.60	0.66
Fe, wt. %	2.36	0.195	1.97	2.75	1.78	2.95	8.26%	16.51%	24.77%	2.25	2.48
Ga, ppm	2.75	0.42	1.91	3.58	1.49	4.00	15.25%	30.49%	45.74%	2.61	2.88
Gd, ppm	2.43	0.26	1.92	2.95	1.66	3.21	10.60%	21.21%	31.81%	2.31	2.56
Ge, ppm	< 0.1	IND	IND	IND	IND	IND	IND	IND	IND	IND	IND
Hf, ppm	0.41	0.05	0.32	0.50	0.27	0.55	11.40%	22.81%	34.21%	0.39	0.43
Hg, ppm	0.018	0.006	0.006	0.030	0.001	0.035	32.20%	64.41%	96.61%	0.017	0.019
Ho, ppm	0.28	0.020	0.24	0.32	0.22	0.35	7.18%	14.36%	21.53%	0.27	0.30
In, ppm	0.024	0.004	0.015	0.033	0.011	0.037	17.87%	35.74%	53.61%	0.023	0.025

SI unit equivalents: ppm (parts per million;  $1 \times 10^{-6}$ )  $\equiv$  mg/kg; wt. % (weight per cent)  $\equiv$  % (mass fraction).

Note 1: intervals may appear asymmetric due to rounding; IND: indeterminate.

Note 2: the number of decimal places quoted does not imply accuracy of the certified value to this level but are given to minimise rounding errors when calculating 2SD and 3SD windows.

Table 1 continued.

Constituent	Certified Value	Absolute Standard Deviations					Relative Standard Deviations			5% window	
		1SD	2SD Low	2SD High	3SD Low	3SD High	1RSD	2RSD	3RSD	Low	High
Aqua Regia Digestion continued											
K, wt. %	0.133	0.023	0.087	0.180	0.064	0.203	17.44%	34.89%	52.33%	0.127	0.140
La, ppm	14.8	1.35	12.1	17.5	10.7	18.8	9.14%	18.27%	27.41%	14.0	15.5
Li, ppm	7.57	1.05	5.48	9.67	4.43	10.71	13.82%	27.65%	41.47%	7.19	7.95
Lu, ppm	0.073	0.005	0.064	0.082	0.059	0.087	6.35%	12.70%	19.06%	0.069	0.077
Mg, wt. %	0.704	0.067	0.571	0.838	0.504	0.905	9.49%	18.97%	28.46%	0.669	0.739
Mn, wt. %	0.021	0.002	0.016	0.026	0.014	0.028	11.22%	22.45%	33.67%	0.020	0.022
Mo, ppm	1.28	0.079	1.12	1.43	1.04	1.51	6.17%	12.34%	18.51%	1.21	1.34
Na, wt. %	0.088	0.014	0.061	0.116	0.047	0.130	15.69%	31.38%	47.07%	0.084	0.093
Nb, ppm	0.37	0.08	0.22	0.53	0.14	0.61	20.98%	41.95%	62.93%	0.35	0.39
Nd, ppm	15.2	1.46	12.3	18.1	10.8	19.5	9.60%	19.20%	28.79%	14.4	15.9
Ni, ppm	57	3.3	50	64	47	67	5.82%	11.64%	17.46%	54	60
P, wt. %	0.051	0.002	0.048	0.054	0.046	0.056	3.18%	6.36%	9.53%	0.048	0.053
Pb, ppm	6.76	0.369	6.02	7.50	5.66	7.87	5.45%	10.90%	16.36%	6.42	7.10
Pd, ppb	< 10	IND	IND	IND	IND	IND	IND	IND	IND	IND	IND
Pr, ppm	3.65	0.256	3.14	4.17	2.89	4.42	7.00%	14.01%	21.01%	3.47	3.84
Rb, ppm	8.58	1.23	6.12	11.04	4.89	12.27	14.35%	28.70%	43.05%	8.15	9.01
Re, ppm	< 0.001	IND	IND	IND	IND	IND	IND	IND	IND	IND	IND
S, wt. %	0.012	0.003	0.005	0.018	0.002	0.021	26.81%	53.62%	80.43%	0.011	0.012
Sb, ppm	0.42	0.05	0.32	0.51	0.28	0.55	10.92%	21.83%	32.75%	0.39	0.44
Sc, ppm	2.30	0.34	1.62	2.98	1.28	3.32	14.82%	29.63%	44.45%	2.18	2.41
Se, ppm	< 1	IND	IND	IND	IND	IND	IND	IND	IND	IND	IND
Sm, ppm	3.05	0.244	2.56	3.54	2.32	3.78	8.00%	16.00%	24.00%	2.90	3.20
Sn, ppm	1.00	0.091	0.82	1.18	0.73	1.27	9.11%	18.23%	27.34%	0.95	1.05
Sr, ppm	39.7	3.47	32.7	46.6	29.3	50.1	8.75%	17.50%	26.25%	37.7	41.7
Ta, ppm	< 0.01	IND	IND	IND	IND	IND	IND	IND	IND	IND	IND
Tb, ppm	0.32	0.025	0.27	0.37	0.24	0.40	7.95%	15.90%	23.85%	0.30	0.34
Te, ppm	< 0.1	IND	IND	IND	IND	IND	IND	IND	IND	IND	IND
Th, ppm	5.75	0.296	5.16	6.34	4.86	6.64	5.14%	10.29%	15.43%	5.47	6.04
Ti, wt. %	0.102	0.024	0.054	0.151	0.030	0.175	23.54%	47.07%	70.61%	0.097	0.108
Tl, ppm	0.067	0.010	0.047	0.087	0.037	0.096	14.92%	29.85%	44.77%	0.063	0.070
U, ppm	0.58	0.021	0.54	0.63	0.52	0.65	3.65%	7.30%	10.94%	0.56	0.61
V, ppm	19.5	2.0	15.5	23.4	13.6	25.4	10.10%	20.20%	30.30%	18.5	20.4
W, ppm	0.36	0.05	0.27	0.46	0.22	0.51	13.07%	26.13%	39.20%	0.35	0.38
Y, ppm	7.18	0.406	6.37	8.00	5.97	8.40	5.65%	11.29%	16.94%	6.83	7.54
Yb, ppm	0.54	0.047	0.45	0.64	0.40	0.68	8.56%	17.13%	25.69%	0.52	0.57
Zn, ppm	32.8	4.8	23.2	42.4	18.4	47.2	14.63%	29.26%	43.89%	31.1	34.4
Zr, ppm	17.7	1.24	15.2	20.2	14.0	21.4	7.00%	14.00%	20.99%	16.8	18.6

SI unit equivalents: ppm (parts per million;  $1 \times 10^{-6}$ )  $\equiv$  mg/kg; wt. % (weight per cent)  $\equiv$  % (mass fraction).

Note 1: intervals may appear asymmetric due to rounding; IND: indeterminate.

Note 2: the number of decimal places quoted does not imply accuracy of the certified value to this level but are given to minimise rounding errors when calculating 2SD and 3SD windows.

## TABLE OF CONTENTS

INTRODUCTION .....	6
SOURCE MATERIAL .....	7
PERFORMANCE GATES .....	8
COMMINUTION AND HOMOGENISATION PROCEDURES .....	8
PHYSICAL PROPERTIES .....	8
ANALYTICAL PROGRAM .....	8
STATISTICAL ANALYSIS .....	10
Homogeneity Evaluation .....	11
PREPARER AND SUPPLIER .....	16
PARTICIPATING LABORATORIES .....	17
METROLOGICAL TRACEABILITY .....	22
COMMUTABILITY .....	22
INTENDED USE .....	22
STABILITY AND STORAGE INSTRUCTIONS .....	23
INSTRUCTIONS FOR CORRECT USE .....	23
HANDLING INSTRUCTIONS .....	25
LEGAL NOTICE .....	25
DOCUMENT HISTORY .....	25
QMS CERTIFICATION .....	25
CERTIFYING OFFICER .....	26
REFERENCES .....	26

## LIST OF TABLES

Table 1. Certified Values and Performance Gates for OREAS 251b. ....	1
Table 2. Indicative Values for OREAS 251b. ....	6
Table 3. Physical properties of OREAS 251b. ....	8
Table 4. Certified Values, 95 % Uncertainty & Tolerance Intervals for OREAS 251b. ....	11
Table 5. Neutron Activation Analysis of Au on 20 x 1g subsamples. ....	15

## LIST OF FIGURES

Figure 1. Au by Fire Assay in OREAS 251b .....	18
Figure 2. Au by aqua regia digestion in OREAS 251b .....	19
Figure 3. Au by cyanide leach in OREAS 251b .....	20
Figure 4. Au by PhotonAssay in OREAS 251b .....	21

**Table 2. Indicative Values for OREAS 251b.**

Constituent	Unit	Value	Constituent	Unit	Value	Constituent	Unit	Value
<b>4-Acid Digestion</b>								
Hg	ppm	< 2						
<b>Aqua Regia Digestion</b>								
Pt	ppb	< 5	Tm	ppm	0.083			
<b>Borate Fusion XRF</b>								
Al <sub>2</sub> O <sub>3</sub>	wt. %	9.27	Fe <sub>2</sub> O <sub>3</sub>	wt. %	5.37	S	wt. %	0.016
As	ppm	20.0	K <sub>2</sub> O	wt. %	1.40	SiO <sub>2</sub>	wt. %	74.51
BaO	ppm	365	MgO	wt. %	2.84	Sn	ppm	< 10
CaO	wt. %	2.84	MnO	wt. %	0.057	Sr	ppm	254
Cl	ppm	30.0	Na <sub>2</sub> O	wt. %	1.06	TiO <sub>2</sub>	wt. %	0.871
Co	ppm	20.0	Ni	ppm	80	V <sub>2</sub> O <sub>5</sub>	ppm	160
Cr <sub>2</sub> O <sub>3</sub>	ppm	200	P <sub>2</sub> O <sub>5</sub>	wt. %	0.165	Zn	ppm	70
Cu	ppm	30.0	Pb	ppm	15.0	Zr	ppm	204
<b>Thermogravimetry</b>								
LOI <sup>1000</sup>	wt. %	1.64						
<b>Infrared Combustion</b>								
C	wt. %	0.085	S	wt. %	< 0.01			
<b>Laser Ablation ICP-MS</b>								
Ag	ppm	0.075	Hf	ppm	5.60	Sm	ppm	5.06
As	ppm	12.7	Ho	ppm	0.81	Sn	ppm	5.00
Ba	ppm	318	In	ppm	0.050	Sr	ppm	195
Be	ppm	1.40	La	ppm	26.7	Ta	ppm	1.21
Bi	ppm	0.43	Lu	ppm	0.27	Tb	ppm	0.71
Cd	ppm	< 0.1	Mn	wt. %	0.044	Te	ppm	< 0.2
Ce	ppm	52	Mo	ppm	1.90	Th	ppm	8.81
Co	ppm	19.1	Nb	ppm	16.7	Ti	wt. %	0.519
Cr	ppm	137	Nd	ppm	25.4	Tl	ppm	0.20
Cs	ppm	2.89	Ni	ppm	76	Tm	ppm	0.32
Cu	ppm	26.0	Pb	ppm	9.50	U	ppm	1.47
Dy	ppm	4.15	Pr	ppm	6.61	V	ppm	80
Er	ppm	2.22	Rb	ppm	63	W	ppm	2.75
Eu	ppm	1.18	Re	ppm	0.008	Y	ppm	21.7
Ga	ppm	12.4	Sb	ppm	0.80	Yb	ppm	1.99
Gd	ppm	4.64	Sc	ppm	9.00	Zn	ppm	68
Ge	ppm	1.18	Se	ppm	< 5	Zr	ppm	200

SI unit equivalents: ppb (parts per billion;  $1 \times 10^{-9}$ )  $\equiv$   $\mu\text{g/kg}$ ; ppm (parts per million;  $1 \times 10^{-6}$ )  $\equiv$   $\text{mg/kg}$ ; wt. % (weight per cent)  $\equiv$  % (mass fraction).

Note: the number of significant figures reported is not a reflection of the level of certainty of stated values. They are instead an artefact of ORE's in-house CRM-specific LIMS.

## INTRODUCTION

OREAS reference materials are intended to provide a low-cost method of evaluating and improving the quality of analysis of geological samples. To the geologist they provide a means of implementing quality control in analytical data sets generated in exploration from the grass roots level through to prospect evaluation, and in grade control at mining operations. To the analyst they provide an effective means of calibrating analytical

equipment, assessing new techniques and routinely monitoring in-house procedures. OREAS reference materials enable users to successfully achieve process control of these tasks because the observed variance from repeated analysis has its origin almost exclusively in the analytical process rather than the reference material itself. In evaluating laboratory performance with this CRM, the section headed 'Instructions for correct use' should be read carefully.

Table 1 provides performance gate intervals for the certified values based on their pooled 1SD's. Table 2 shows indicative values including major and trace element characterisation by Bureau Veritas in Perth, Western Australia which includes:

- Major oxides by lithium borate fusion with X-ray fluorescence;
- LOI at 1000°C by thermogravimetric analyser;
- Total Carbon and Sulphur by Infrared combustion furnace;
- Trace element characterisation by laser ablation with ICP-MS finish.

Table 3 provides some indicative physical properties and Table 4 presents the 95% confidence and tolerance limits for all certified values. Gold homogeneity (via INAA) is shown in Table 5 and is also demonstrated by a nested ANOVA program using fire assay (see '**nested ANOVA**' section).

Tabulated results of all elements (including Au INAA analyses) together with uncorrected means, medians, standard deviations, relative standard deviations and percent deviation of lab means from the corrected mean of means (PDM<sup>3</sup>) are presented in the detailed certification data for this CRM (**OREAS 251b-DataPack.1.3.230609\_162242.xlsx**).

Results are also presented in scatter plots for gold by fire assay, aqua regia digestion, cyanide leach and PhotonAssay (Figures 1 to 4, respectively) together with  $\pm 3SD$  (magenta) and  $\pm 5\%$  (yellow) control lines and certified value (green line). Accepted individual results are coloured blue and individual and dataset outliers are identified in red and violet, respectively.

## SOURCE MATERIAL

OREAS 251b was prepared from a blend of gold-bearing oxide ore and barren materials (basaltic scoria, quartz and mudstone). The ore (Wilber Lode) was sourced from the Andy Well Gold Project located approximately 45km north of Meekatharra in the Murchison region of Western Australia. The Wilber Lode is a shear-hosted, narrow vein, quartz lode-style gold deposit situated within the Meekatharra-Wydegee greenstone belt in the Archaean Yilgarn Craton of Western Australia. The common primary mineral assemblage as stated by Mason and Harris (2011, 2012, cited in Hingston et al, 2014) is quartz, calcite, chlorite, fuchsite, pyrite, galena, sphalerite, chalcopryrite and gold. The host rock consists of a complex sequence of weathered Archaean meta-basalt and meta-porphyrific rocks derived from a primary mineralogy of albite, actinolite, chlorite, sericite, biotite, calcite, zoisite, muscovite, quartz and titanate.



## PERFORMANCE GATES

Table 1 above shows intervals calculated for two and three standard deviations. As a guide these intervals may be regarded as warning or rejection for multiple 2SD outliers, or rejection for individual 3SD outliers in QC monitoring, although their precise application should be at the discretion of the QC manager concerned (also see 'Intended Use' section below). Westgard Rules extend the basics of single-rule QC monitoring using multi-rules (for more information visit [www.westgard.com/mltirule.htm](http://www.westgard.com/mltirule.htm)). A second method utilises a 5% window calculated directly from the certified value.

Standard deviation is also shown in relative percent for one, two and three relative standard deviations (1RSD, 2RSD and 3RSD) to facilitate an appreciation of the magnitude of these numbers and a comparison with the 5% window. Caution should be exercised when concentration levels approach lower limits of detection of the analytical methods employed as performance gates calculated from standard deviations tend to be excessively wide whereas those determined by the 5% method are too narrow. One approach used at commercial laboratories is to set the acceptance criteria at twice the detection level (DL)  $\pm$  10%.

*i.e., Certified Value  $\pm$  10%  $\pm$  2DL (adapted from Govett, 1983).*

## COMMINUTION AND HOMOGENISATION PROCEDURES

The material constituting OREAS 251b was prepared in the following manner:

- Drying of ore and barren materials to constant mass at 105°C;
- Crushing and milling of the barren materials to >98% minus 75 microns;
- Crushing and milling of the ore material to 100% minus 30 microns;
- Blending in appropriate proportions to achieve the desired grade;
- Packaging in 60g units sealed in laminated foil pouches and 1kg units in plastic jars.

## PHYSICAL PROPERTIES

OREAS 251b was tested at ORE Research & Exploration Pty Ltd's onsite facility for various physical properties. Table 3 presents these findings that should be used for informational purposes only.

**Table 3. Physical properties of OREAS 251b.**

Bulk Density (g/L)	Moisture%	Munsell Notation <sup>‡</sup>	Munsell Color <sup>‡</sup>
800	0.95	5YR 3/2	Grayish Brown

<sup>‡</sup>The Munsell Rock Color Chart helps geologists and archeologists communicate with colour more effectively by cross-referencing ISCC-NBS colour names with unique Munsell alpha-numeric colour notations for rock colour samples.

## ANALYTICAL PROGRAM

Thirty-one commercial analytical laboratories participated in the program to certify the elements reported in Table 1. The following methods were employed:



- Gold by fire assay (25-50g charge weight) with AAS (21 laboratories) and ICP-OES (5 laboratories) finish;
- Gold by aqua regia digestion (15-50g sample weight) with ICP-OES and/or ICP-MS (22 laboratories) finish;
- Gold by cyanide leach; a variety of cyanide leach methods were undertaken by the participating laboratories including the use of LeachWELL tablets, alkaline added sodium cyanide solution as well as sodium cyanide liquor with LeachWELL powder. The sample weights included: 20g (1 laboratory by AAS finish), 30g (4 laboratories by AAS finish), 50g (3 laboratories by ICP-MS finish and 1 laboratory by AAS finish), 60g (1 laboratory by ICP-MS finish) and 200g (5 laboratories by AAS and 1 laboratory by ICP-MS finish).
- Gold by x-ray PhotonAssay with recommended net mass  $490 \pm 20$  g (12 Chrysos PhotonAssay units at 7 laboratories with two rounds of data reported from each unit);
- Full ICP-OES and ICP-MS elemental suites by 4-acid ( $\text{HNO}_3$ -HF- $\text{HClO}_4$ -HCl) digestion (up to 23 laboratories depending on the element);
- Full ICP-OES and ICP-MS elemental suites by aqua regia digestion (up to 24 laboratories depending on the element).

To confirm homogeneity, gold by instrumental neutron activation analysis (INAA) was undertaken on 20 x 1g subsamples by the Actlabs Ancaster, Ontario, Canada (see Table 5 in the 'Homogeneity Evaluation' section below).

For the round robin characterisation program, twenty 3kg test units were taken at predetermined intervals during the bagging stage, immediately following homogenisation and are considered representative of the entire prepared batch. For all analytical methods except for Au by PhotonAssay, six pulp samples were submitted to each laboratory for analysis (the weight provided depended on whether the laboratory was anticipated to undertake assays by gold cyanide leach). The samples received by each laboratory were obtained by taking two samples from each of three separate 3kg test units. This format enabled a nested ANOVA treatment of the results to evaluate homogeneity, i.e., to ascertain whether between-unit variance is greater than within-unit variance.

For the Au by PhotonAssay (PA) characterisation program, a 1kg sample was provided for analysis to each PA equipped laboratory. Each 1kg sample underwent the following preparation and analysis:

1. Send 1kg of each candidate reference material to each PA equipped laboratory.
2. From the 1kg sample provided, Chrysos staff prepare two PA jars ( $490 \pm 20$ g each), conduct weight/fill measurements and run both samples through PA machine three times to get a total of 6 measurements.
3. Material is returned to 1kg tub.
4. Steps 2-3 are repeated for each machine operating at that laboratory (3 machines for Intertek Perth, 2 machines at ALS Perth, 3 machines at ALS Kalgoorlie; 1 machine for the other laboratories).
5. 1kg tub of material is then handed over to the internal staff to repeat steps 2-4.

For certification purposes, the steps above generate a total of 144 results from seven participating PA equipped laboratories.

## STATISTICAL ANALYSIS

**Certified Values and their uncertainty intervals** (Table 4 below) have been determined for each analyte following removal of individual, laboratory dataset (batch) and 3SD outliers (single iteration).

For individual outliers within a laboratory batch the z-score test is used in combination with a second method that determines the per cent deviation of the individual value from the batch median. Outliers in general are selected on the basis of z-scores  $> 2.5$  and with per cent deviations (i)  $> 3$  and (ii) more than three times the average absolute per cent deviation for the batch. Each laboratory data set mean is tested for outlying status based on z-score discrimination and rejected if  $> 2.5$ . After individual and laboratory data set (batch) outliers have been eliminated a non-iterative 3 standard deviation filter is applied, with those values lying outside this window also relegated to outlying status. However, while statistics are taken into account, the exercise of a statistician's prerogative plays a significant role in identifying outliers.

**Certified Values** are the means of accepted laboratory means after outlier filtering and are the present best estimate of the true value. The INAA data (Table 5) is omitted from determination of the certified value for Au and is used solely for the calculation of Tolerance Limits and homogeneity evaluation of OREAS 251b (see 'Homogeneity Evaluation' section below).

**The 95% Expanded Uncertainty** provides a 95% probability that the true value of the analyte under consideration lies between the upper and lower limits and is calculated according to the method in ISO Guides [6,16]. All known or suspected sources of bias have been investigated or taken into account.

**Indicative (uncertified) values** (Table 2) are present where the number of laboratories reporting a particular analyte is insufficient ( $< 5$ ) to support certification. These major and trace element characterisation values are presented for informational purposes only.

**Standard Deviation** intervals (Table 1) provide an indication of a level of performance that might reasonably be expected from a laboratory being monitored by this CRM in a QA/QC program. They take into account errors attributable to measurement uncertainty and CRM variability. For an effective CRM the contribution of the latter should be negligible in comparison to measurement errors. The Standard Deviation values include all sources of measurement uncertainty: between-lab variance, within-run variance (precision errors) and CRM variability.

In the application of SD's in monitoring performance it is important to note that not all laboratories function at the same level of proficiency and that different methods in use at a particular laboratory have differing levels of precision. Each laboratory has its own inherent SD (for a specific concentration level and analyte-method pair) based on the analytical process and this SD is not directly related to the round robin program (see 'Intended Use' section for more detail).

The SD for each analyte's certified value is calculated from the same filtered data set used to determine the certified value, i.e., after removal of all individual, lab dataset (batch) and 3SD outliers (single iteration). These outliers can only be removed after the absolute homogeneity of the CRM has been independently established, i.e., the outliers must be confidently deemed to be analytical rather than arising from inhomogeneity of the CRM. ***The standard deviation is then calculated for each analyte from the pooled accepted analyses generated from the certification program.***

## Homogeneity Evaluation

For analytes other than gold, the tolerance limits (ISO 16269:2014) shown in Table 4 were determined using an analysis of precision errors method and are considered a conservative estimate of true homogeneity. The meaning of tolerance limits may be illustrated for copper by 4-acid digestion, where 99% of the time ( $1-\alpha=0.99$ ) at least 95% of subsamples ( $p=0.95$ ) will have concentrations lying between 25.9 and 27.5 ppm. Put more precisely, this means that if the same number of subsamples were taken and analysed in the same manner repeatedly, 99% of the tolerance intervals so constructed would cover at least 95% of the total population, and 1% of the tolerance intervals would cover less than 95% of the total population (ISO Guide 35). **Please note that tolerance limits pertain to the homogeneity of the CRM only and should not be used as control limits for laboratory performance.**

**Table 4. Certified Values, 95 % Uncertainty & Tolerance Intervals for OREAS 251b.**

Constituent	Certified	95% Expanded Uncertainty		95% Tolerance Limits	
	Value	Low	High	Value	Low
<b>Pb Fire Assay</b>					
Au, Gold (ppm)	0.505	0.497	0.513	0.497*	0.512*
<b>Aqua Regia Digestion (sample mass 10-50g)</b>					
Au, Gold (ppm)	0.497	0.487	0.507	0.489*	0.505*
<b>Cyanide Leach</b>					
Au, Gold (ppm)	0.491	0.477	0.505	0.488*	0.494*
<b>PhotonAssay (recommended gross mass 490±20 g)</b>					
Au, Gold (ppm)	0.499	0.486	0.512	0.497*	0.501*
<b>4-Acid Digestion</b>					
Ag, Silver (ppm)	0.123	0.104	0.141	IND	IND
Al, Aluminium (wt.%)	4.80	4.70	4.90	4.71	4.89
As, Arsenic (ppm)	12.9	12.3	13.5	12.3	13.5
Ba, Barium (ppm)	311	300	322	305	317
Be, Beryllium (ppm)	1.25	1.17	1.34	1.19	1.31
Bi, Bismuth (ppm)	0.31	0.27	0.35	0.29	0.33
Ca, Calcium (wt.%)	2.01	1.96	2.06	1.97	2.05
Cd, Cadmium (ppm)	0.027	0.018	0.036	IND	IND
Ce, Cerium (ppm)	51	48	54	50	52
Co, Cobalt (ppm)	18.0	17.2	18.8	17.3	18.7
Cr, Chromium (ppm)	115	108	122	111	120
Cs, Caesium (ppm)	2.80	2.68	2.92	2.72	2.88
Cu, Copper (ppm)	26.7	24.9	28.5	25.9	27.5
Dy, Dysprosium (ppm)	3.14	2.87	3.40	3.02	3.26
Er, Erbium (ppm)	1.54	1.38	1.69	1.44	1.63
Eu, Europium (ppm)	1.10	1.04	1.16	1.05	1.15
Fe, Iron (wt.%)	3.69	3.60	3.78	3.63	3.75

SI unit equivalents: ppm (parts per million;  $1 \times 10^{-6}$ )  $\equiv$  mg/kg; wt.% (weight per cent)  $\equiv$  % (mass fraction).

\*Gold Tolerance Limits for typical 30g fire assay, 25g aqua regia digestion, 200g cyanide leach and 490±20g PhotonAssay methods are determined from 20 x 1g INAA results and the Sampling Constant (Ingamells & Switzer, 1973).

IND: indeterminate (due to limited reading resolution of the methods employed).

Note: intervals may appear asymmetric due to rounding.

Table 4 continued.

Constituent	Certified	95% Expanded Uncertainty		95% Tolerance Limits	
	Value	Low	High	Value	Low
<b>4-Acid Digestion continued</b>					
Ga, Gallium (ppm)	12.6	11.9	13.2	12.2	13.0
Gd, Gadolinium (ppm)	4.03	3.75	4.32	3.88	4.19
Ge, Germanium (ppm)	0.11	0.07	0.15	IND	IND
Hf, Hafnium (ppm)	2.94	2.72	3.16	2.80	3.09
Ho, Holmium (ppm)	0.57	0.51	0.62	0.53	0.60
In, Indium (ppm)	0.065	0.058	0.072	0.059	0.071
K, Potassium (wt.%)	1.17	1.14	1.20	1.14	1.19
La, Lanthanum (ppm)	25.8	24.6	27.1	25.2	26.5
Li, Lithium (ppm)	21.0	20.0	22.0	20.4	21.5
Lu, Lutetium (ppm)	0.20	0.19	0.22	0.19	0.22
Mg, Magnesium (wt.%)	1.67	1.62	1.71	1.64	1.69
Mn, Manganese (wt.%)	0.042	0.041	0.044	0.042	0.043
Mo, Molybdenum (ppm)	1.84	1.71	1.98	1.75	1.94
Na, Sodium (wt.%)	0.774	0.754	0.794	0.758	0.790
Nb, Niobium (ppm)	14.4	13.5	15.3	14.0	14.8
Nd, Neodymium (ppm)	23.7	22.5	25.0	23.1	24.4
Ni, Nickel (ppm)	72	70	75	71	74
P, Phosphorus (wt.%)	0.070	0.068	0.072	0.068	0.071
Pb, Lead (ppm)	9.06	8.46	9.66	8.65	9.47
Pr, Praseodymium (ppm)	6.21	5.87	6.55	6.01	6.41
Rb, Rubidium (ppm)	63	61	65	62	65
Re, Rhenium (ppm)	< 0.002	IND	IND	IND	IND
S, Sulphur (wt.%)	0.017	0.015	0.019	IND	IND
Sb, Antimony (ppm)	0.79	0.73	0.84	0.74	0.83
Sc, Scandium (ppm)	9.68	9.23	10.12	9.32	10.03
Se, Selenium (ppm)	< 1	IND	IND	IND	IND
Sm, Samarium (ppm)	4.72	4.38	5.06	4.57	4.86
Sn, Tin (ppm)	3.65	3.41	3.89	3.48	3.81
Sr, Strontium (ppm)	196	190	201	190	201
Ta, Tantalum (ppm)	1.03	0.96	1.11	0.99	1.08
Tb, Terbium (ppm)	0.58	0.54	0.62	0.55	0.61
Te, Tellurium (ppm)	< 0.05	IND	IND	IND	IND
Th, Thorium (ppm)	8.65	8.26	9.05	8.41	8.89
Ti, Titanium (wt.%)	0.481	0.466	0.496	0.467	0.495
Tl, Thallium (ppm)	0.35	0.33	0.37	0.33	0.37
Tm, Thulium (ppm)	0.21	0.19	0.24	0.19	0.23

SI unit equivalents: ppm (parts per million;  $1 \times 10^{-6}$ )  $\equiv$  mg/kg; wt.% (weight per cent)  $\equiv$  % (mass fraction).

IND: indeterminate (due to limited reading resolution of the methods employed; for practical purposes the 95% Expanded Uncertainty can be set between zero and a two times multiple of an upper bound/non-detect limit value).

Note: intervals may appear asymmetric due to rounding.

Table 4 continued.

Constituent	Certified	95% Expanded Uncertainty		95% Tolerance Limits	
	Value	Low	High	Value	Low
<b>4-Acid Digestion continued</b>					
U, Uranium (ppm)	1.27	1.19	1.35	1.23	1.32
V, Vanadium (ppm)	75	72	77	73	77
W, Tungsten (ppm)	1.97	1.81	2.14	1.86	2.09
Y, Yttrium (ppm)	15.2	14.5	15.9	14.8	15.7
Yb, Ytterbium (ppm)	1.39	1.25	1.54	1.35	1.44
Zn, Zinc (ppm)	60	58	62	58	62
Zr, Zirconium (ppm)	108	102	113	104	111
<b>Aqua Regia Digestion</b>					
Ag, Silver (ppm)	0.104	0.094	0.114	IND	IND
Al, Aluminium (wt.%)	0.871	0.807	0.935	0.846	0.897
As, Arsenic (ppm)	6.01	5.61	6.42	5.74	6.28
B, Boron (ppm)	< 10	IND	IND	IND	IND
Ba, Barium (ppm)	67	64	69	65	68
Be, Beryllium (ppm)	0.39	0.36	0.42	0.37	0.42
Bi, Bismuth (ppm)	0.29	0.27	0.31	0.27	0.31
Ca, Calcium (wt.%)	0.593	0.566	0.621	0.577	0.610
Cd, Cadmium (ppm)	0.016	0.007	0.026	IND	IND
Ce, Cerium (ppm)	31.2	29.8	32.5	30.5	31.9
Co, Cobalt (ppm)	12.2	11.4	13.0	11.8	12.6
Cr, Chromium (ppm)	52	50	55	51	54
Cs, Caesium (ppm)	0.72	0.66	0.78	0.69	0.75
Cu, Copper (ppm)	19.4	18.3	20.6	18.9	20.0
Dy, Dysprosium (ppm)	1.60	1.49	1.72	1.44	1.77
Er, Erbium (ppm)	0.71	0.64	0.79	0.68	0.74
Eu, Europium (ppm)	0.63	0.55	0.71	0.60	0.66
Fe, Iron (wt.%)	2.36	2.27	2.46	2.30	2.42
Ga, Gallium (ppm)	2.75	2.48	3.01	2.63	2.86
Gd, Gadolinium (ppm)	2.43	2.08	2.79	2.28	2.59
Ge, Germanium (ppm)	< 0.1	IND	IND	IND	IND
Hf, Hafnium (ppm)	0.41	0.38	0.44	0.39	0.43
Hg, Mercury (ppm)	0.018	0.010	0.026	IND	IND
Ho, Holmium (ppm)	0.28	0.26	0.31	IND	IND
In, Indium (ppm)	0.024	0.019	0.029	0.021	0.027
K, Potassium (wt.%)	0.133	0.121	0.145	0.130	0.137
La, Lanthanum (ppm)	14.8	14.0	15.6	14.5	15.1
Li, Lithium (ppm)	7.57	6.98	8.17	7.32	7.83

SI unit equivalents: ppm (parts per million;  $1 \times 10^{-6}$ )  $\equiv$  mg/kg; wt.% (weight per cent)  $\equiv$  % (mass fraction).

IND: indeterminate (due to limited reading resolution of the methods employed; for practical purposes the 95% Expanded Uncertainty can be set between zero and a two times multiple of an upper bound/non-detect limit value).

Note: intervals may appear asymmetric due to rounding.

Table 4 continued.

Constituent	Certified	95% Expanded Uncertainty		95% Tolerance Limits	
	Value	Low	High	Value	Low
<b>Aqua Regia Digestion continued</b>					
Lu, Lutetium (ppm)	0.073	0.066	0.080	IND	IND
Mg, Magnesium (wt.%)	0.704	0.672	0.736	0.690	0.718
Mn, Manganese (wt.%)	0.021	0.020	0.022	0.021	0.022
Mo, Molybdenum (ppm)	1.28	1.17	1.38	1.20	1.35
Na, Sodium (wt.%)	0.088	0.079	0.098	0.084	0.093
Nb, Niobium (ppm)	0.37	0.30	0.44	0.33	0.42
Nd, Neodymium (ppm)	15.2	13.1	17.2	14.7	15.6
Ni, Nickel (ppm)	57	55	59	56	58
P, Phosphorus (wt.%)	0.051	0.050	0.052	0.050	0.052
Pb, Lead (ppm)	6.76	6.41	7.11	6.24	7.28
Pd, Palladium (ppb)	< 10	IND	IND	IND	IND
Pr, Praseodymium (ppm)	3.65	3.29	4.02	3.54	3.77
Rb, Rubidium (ppm)	8.58	7.83	9.33	8.26	8.89
Re, Rhenium (ppm)	< 0.001	IND	IND	IND	IND
S, Sulphur (wt.%)	0.012	0.008	0.015	IND	IND
Sb, Antimony (ppm)	0.42	0.38	0.45	0.38	0.46
Sc, Scandium (ppm)	2.30	2.07	2.53	2.21	2.39
Se, Selenium (ppm)	< 1	IND	IND	IND	IND
Sm, Samarium (ppm)	3.05	2.62	3.48	2.84	3.25
Sn, Tin (ppm)	1.00	0.92	1.07	IND	IND
Sr, Strontium (ppm)	39.7	37.9	41.5	38.6	40.8
Ta, Tantalum (ppm)	< 0.01	IND	IND	IND	IND
Tb, Terbium (ppm)	0.32	0.29	0.35	0.30	0.34
Te, Tellurium (ppm)	< 0.1	IND	IND	IND	IND
Th, Thorium (ppm)	5.75	5.52	5.98	5.63	5.88
Ti, Titanium (wt.%)	0.102	0.090	0.115	0.100	0.105
Tl, Thallium (ppm)	0.067	0.058	0.075	IND	IND
U, Uranium (ppm)	0.58	0.56	0.61	0.57	0.60
V, Vanadium (ppm)	19.5	18.3	20.7	18.8	20.2
W, Tungsten (ppm)	0.36	0.32	0.41	0.33	0.40
Y, Yttrium (ppm)	7.18	6.93	7.44	7.02	7.35
Yb, Ytterbium (ppm)	0.54	0.49	0.60	0.50	0.59
Zn, Zinc (ppm)	32.8	30.2	35.3	31.5	34.1
Zr, Zirconium (ppm)	17.7	16.8	18.6	17.1	18.3

SI unit equivalents: ppm (parts per million;  $1 \times 10^{-6}$ )  $\equiv$  mg/kg; wt.% (weight per cent)  $\equiv$  % (mass fraction).

IND: indeterminate (due to limited reading resolution of the methods employed; for practical purposes the 95% Expanded Uncertainty can be set between zero and a two times multiple of an upper bound/non-detect limit value).

Note: intervals may appear asymmetric due to rounding.



**Table 5. Neutron Activation Analysis of Au (in ppm) on 20 x 1g subsamples and showing the equivalent results scaled to a 30g sample mass typical of fire assay determination.**

Replicate No	Au 1g actual	Au 30g equivalent*
1	0.482	0.502
2	0.497	0.504
3	0.489	0.503
4	0.508	0.506
5	0.497	0.504
6	0.506	0.506
7	0.507	0.506
8	0.504	0.506
9	0.507	0.506
10	0.518	0.508
11	0.502	0.505
12	0.503	0.506
13	0.512	0.507
14	0.538	0.512
15	0.513	0.507
16	0.509	0.507
17	0.527	0.510
18	0.500	0.505
19	0.495	0.504
20	0.508	0.506
Mean	0.506	0.506
Median	0.507	0.506
Std Dev.	0.012	0.002
Rel.Std.Dev.	2.45%	0.46%

\*Results calculated for a 30g equivalent sample mass using the formula:  $x^{30g Eq} = \frac{(x^{INAA} - \bar{X}) \times RSD@30g}{RSD@1g} + \bar{X}$   
where  $x^{30g Eq}$  = equivalent result calculated for a 30g sample mass  
 $(x^{INAA})$  = raw INAA result at 1g  
 $\bar{X}$  = mean of 1g INAA results

Table 5 above shows the gold INAA data determined on 20 x 1g subsamples of OREAS 251b. An equivalent scaled version of the results is also provided to demonstrate the level of repeatability that would be achieved if 30g fire assay determinations were undertaken without the normal measurement error associated with this methodology. The homogeneity of gold has been determined by INAA using the reduced analytical subsample method which utilises the known relationship between standard deviation and analytical subsample weight (Ingamells and Switzer, 1973). In this approach the sample aliquot is substantially reduced to a point where most of the variability in replicate assays should be due to inhomogeneity of the reference material (i.e., sampling error) and measurement error becomes negligible. In this instance a subsample weight of 1.0 grams was employed and the 1RSD of 0.46% was calculated for a 30g fire assay sample (2.45% at 1g weights) and confirms the high level of gold homogeneity in OREAS 251b.

The homogeneity of OREAS 251b has also been evaluated in a **nested ANOVA** of the round robin program. Each of the forty-two round robin laboratories received six samples per CRM and these samples were made up of paired samples from three different, non-adjacent sampling intervals. The purpose of the ANOVA evaluation is to test that no statistically



significant difference exists in the variance between units to that of the variance within units. This allows an assessment of homogeneity across the entire prepared batch of OREAS 251b. The test was performed using the following parameters:

- Gold fire assay – 156 samples (26 laboratories each providing analyses on 3 pairs of samples);
- Gold aqua regia digestion – 132 samples (22 laboratories each providing analyses on 3 pairs of samples);
- Gold cyanide leach – 108 samples (18 laboratories each providing analyses on 3 pairs of samples);
- Gold PhotonAssay – 48 samples (Chrysos and internal staff both conduct triplicate analysis of 2 PA jars across 12 PA machines [installed across 7 laboratories]);
- Null Hypothesis,  $H_0$ : Between-unit variance is no greater than within-unit variance (reject  $H_0$  if  $p$ -value  $< 0.05$ );
- Alternative Hypothesis,  $H_1$ : Between-unit variance is greater than within-unit variance.

$P$ -values are a measure of probability where values less than 0.05 indicate a greater than 95% probability that the observed differences in within-unit and between-unit variances are real. The datasets were filtered for both individual and laboratory data set (batch) outliers prior to the calculation of the  $p$ -value.

This process derived  $p$ -values of 1.00 for Au by fire assay, 0.958 for Au by aqua regia digestion, 0.801 for Au by cyanide leach and 0.995 for Au by PhotonAssay. All  $p$ -values are insignificant and the Null Hypothesis is retained. Additionally, none of the other certified values showed significant  $p$ -values.

Only results for constituents present in concentrations well above the detection levels (i.e.,  $>20 \times$  Lower Limit of Detection) for the various methods undertaken were considered for the objective of evaluating homogeneity. It is important to note that ANOVA is not an absolute measure of homogeneity. Rather, it establishes whether or not the analytes are distributed in a similar manner throughout the packaging run of OREAS 251b and whether the variance between two subsamples from the same unit is statistically distinguishable from the variance of two subsamples taken from any two separate units. A reference material therefore can possess poor absolute homogeneity yet still pass a relative homogeneity (ANOVA) test if the within-unit heterogeneity is large and similar across all units.

Based on the statistical analysis of the results of the inter-laboratory certification program it can be concluded that OREAS 251b is fit-for-purpose as a certified reference material (see 'Intended Use' below).

## PREPARER AND SUPPLIER

Certified reference material OREAS 251b was prepared, certified and supplied by:



ORE Research & Exploration Pty Ltd  
37A Hosie Street  
Bayswater North VIC 3153  
AUSTRALIA

Tel: +613-9729 0333  
Fax: +613-9729 8338  
Web: [www.oreas.com](http://www.oreas.com)  
Email: [info@ore.com.au](mailto:info@ore.com.au)

## PARTICIPATING LABORATORIES

1. Actlabs, Ancaster, Ontario, Canada
2. Alex Stewart International, Mendoza, Argentina
3. ALS (formerly MinAnalytical Services), Vale, WA, Australia
4. ALS, Kalgoorlie, WA, Australia
5. ALS, Lima, Peru
6. ALS, Loughrea, Galway, Ireland
7. ALS, Perth, WA, Australia
8. ALS, Vancouver, BC, Canada
9. Bureau Veritas Commodities Canada Ltd, Vancouver, BC, Canada
10. Bureau Veritas Geoanalytical, Perth, WA, Australia
11. CRS Laboratories Oy, Kempele, Northern Ostrobothnia, Finland
12. ESAN Istanbul, Istanbul, Turkey
13. Inspectorate (BV), Lima, Peru
14. Intertek Genalysis, Adelaide, SA, Australia
15. Intertek Genalysis, Perth, WA, Australia
16. Intertek Tarkwa, Tarkwa, Ghana
17. Intertek Testing Services Philippines, Cupang, Muntinlupa, Philippines
18. MSA ENVAL Laboratories, Yamoussoukro, Côte d'Ivoire
19. MSALABS, Val-d'Or, Quebec, Canada
20. MSALABS, Vancouver, BC, Canada
21. On Site Laboratory Services, Bendigo, VIC, Australia
22. Ostrea Mineral Laboratories, Inc., Laguna, Philippines
23. PT Geoservices Ltd, Cikarang, Jakarta Raya, Indonesia
24. PT Intertek Utama Services, Jakarta Timur, DKI Jakarta, Indonesia
25. Ravenswood Gold, Ravenswood, QLD, Australia
26. Reminex Centre de Recherche, Marrakesh, Marrakesh-Safi, Morocco
27. SGS, Randfontein, Gauteng, South Africa
28. SGS Canada Inc., Vancouver, BC, Canada
29. SGS del Peru, Lima, Peru
30. SGS Tarkwa, Tarkwa, Western Region, Ghana
31. Shiva Analyticals Ltd, Bangalore North, Karnataka, India
32. Skyline Assayers & Laboratories, Tucson, Arizona, USA

***Please note: To preserve anonymity, the above numbered alphabetical list of participating laboratories does not correspond with the Lab ID numbering on the scatter plots below.***

Figure 1. Au by Pb Fire Assay in OREAS 251b

SPC.1597.RR1.OREAS 251b.4.Fire Assay.Au.Lab.210918.121857.SN

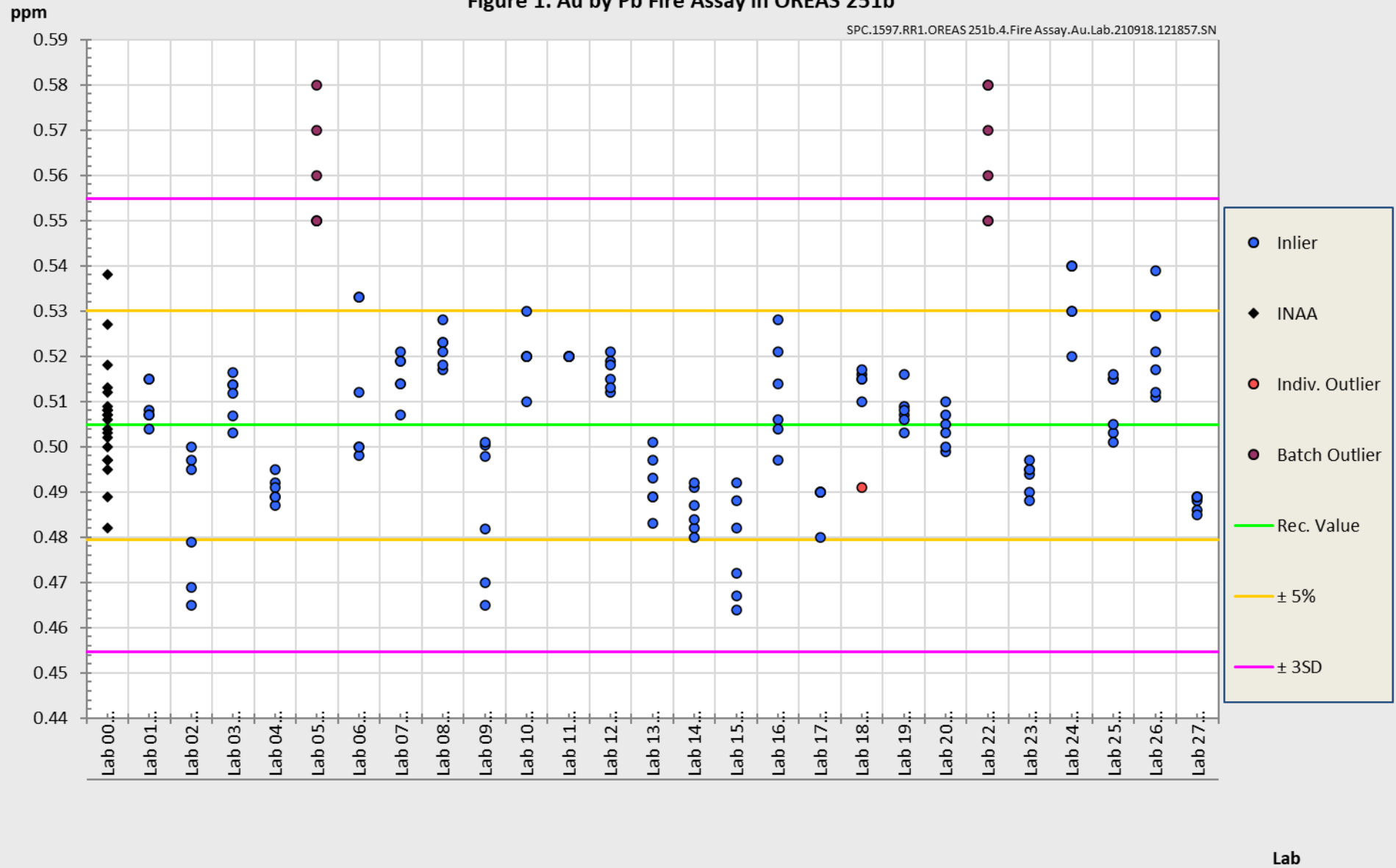




Figure 3. Au by Cyanide Leach in OREAS 251b

SPC.1597.RR1.OREAS 251b.4.CNL.Au.Lab.210918.122130.SS

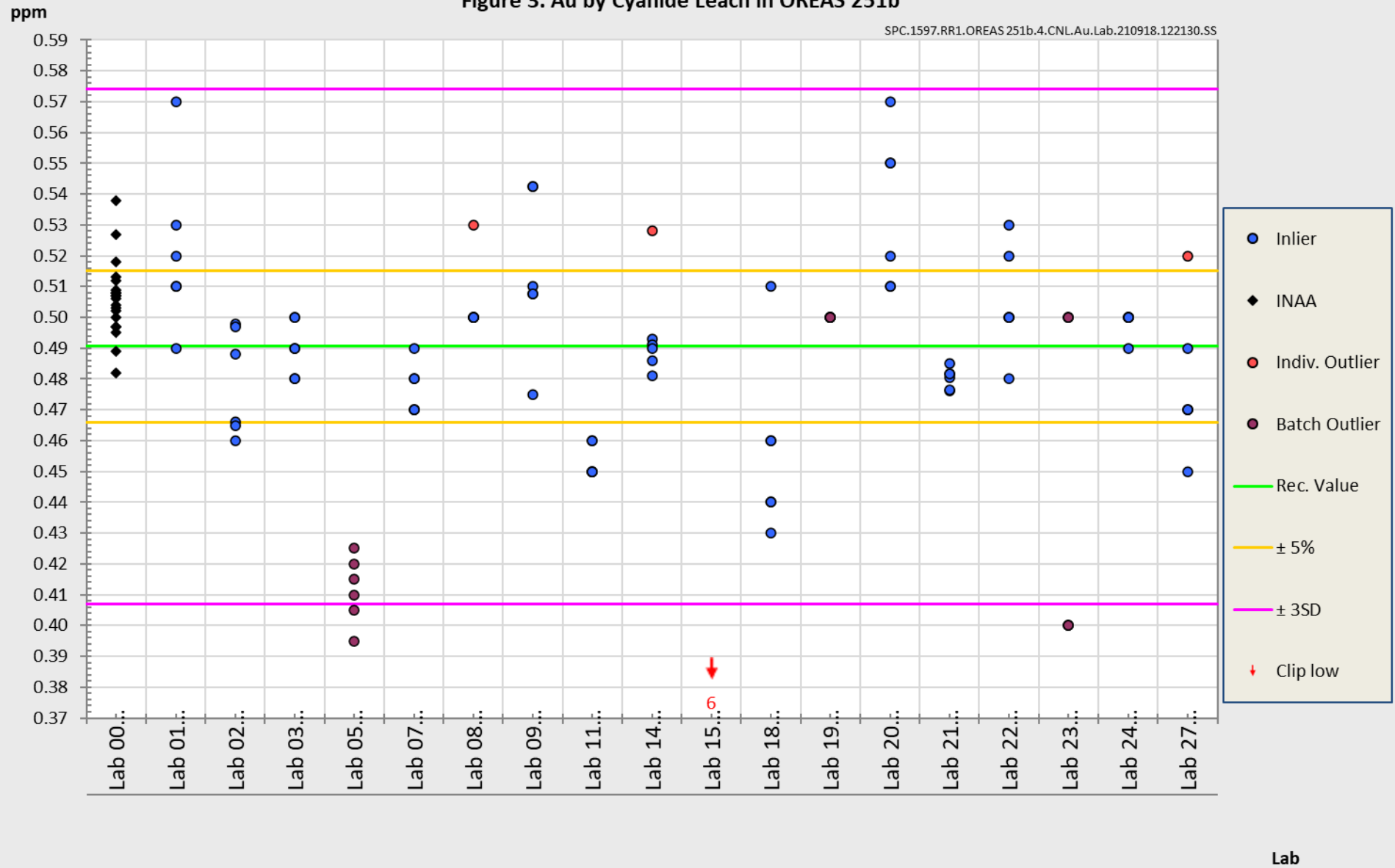
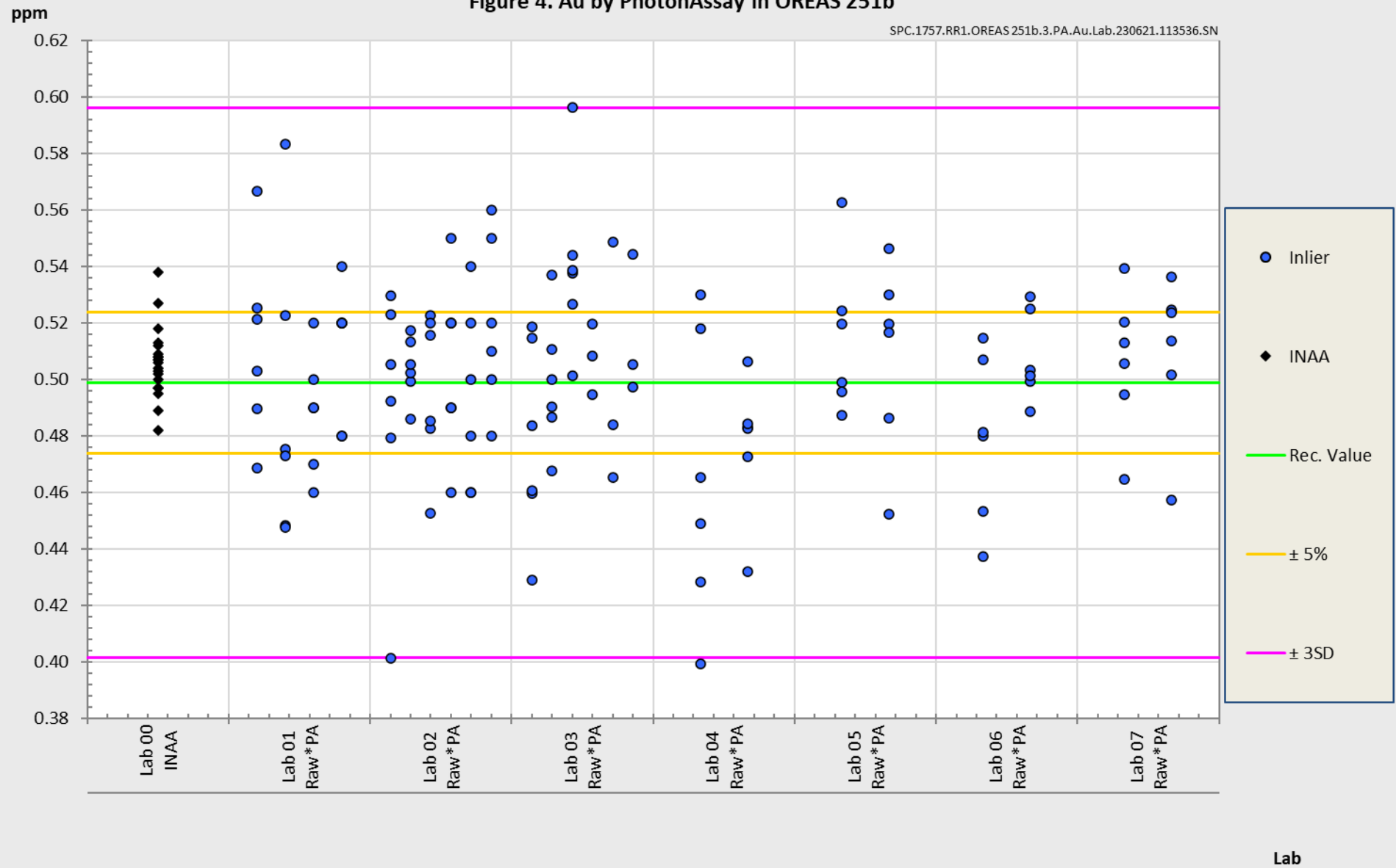


Figure 4. Au by PhotonAssay in OREAS 251b

SPC.1757.RR1.OREAS 251b.3.PA.Au.Lab.230621.113536.SN



## METROLOGICAL TRACEABILITY

The analytical samples were selected in a manner representative of the entire batch of the prepared CRM. This 'representivity' was maintained in each submitted laboratory sample batch and ensures the user that the data is traceable from sample selection through to the analytical results that underlie the consensus values. Each analytical data set has been validated by its assayer through the inclusion of internal reference materials and QC checks during analysis.

The laboratories were chosen on the basis of their competence (from past performance in inter-laboratory programs undertaken by ORE Pty Ltd) for a particular analytical method, analyte or analyte suite and sample matrix. Most of these laboratories have and maintain ISO 17025 accreditation. The certified values presented in this report are calculated from the means of accepted data following robust statistical treatment, as detailed in this report.

Guide ISO/TR 16476:2016, section 5.3.1 describes metrological traceability in reference materials as it pertains to the transformation of the measurand. In this section it states, *"Although the determination of the property value itself can be made traceable to appropriate units through, for example, calibration of the measurement equipment used, steps like the transformation of the sample from one physical (chemical) state to another cannot. Such transformations may only be compared with a reference (when available), or among themselves. For some transformations, reference methods have been defined and may be used in certification projects to evaluate the uncertainty associated with such a transformation. In other cases, only a comparison among different laboratories using the same procedure is possible. In this case, it is impossible to demonstrate absence of method bias; therefore, the result is an operationally defined measurand (ISO Guide 35:2017, 9.2.4c)."* Certification takes place on the basis of agreement among operationally defined, independent measurement results.

## COMMUTABILITY

The measurements of the results that underlie the certified values contained in this report were undertaken by methods involving pre-treatment (digestion/fusion) of the sample. This served to reduce the sample to a simple and well understood form permitting calibration using simple solutions of the CRM. Due to these methods being well understood and highly effective, commutability is not an issue for this CRM. All OREAS CRMs are sourced from natural ore minerals meaning they will display similar behaviour as routine 'field' samples in the relevant measurement process. Care should be taken to ensure 'matrix matching' as close as practically achievable. The matrix and mineralisation style of the CRM is described in the 'Source Material' section and users should select appropriate CRMs matching these attributes to their field samples.

## INTENDED USE

OREAS 251b is intended to cover all activities needed to produce a measurement result. This includes extraction, possible separation steps and the actual measurement process (the signal producing step). OREAS 251b may be used to calibrate the entire procedure by producing a pure substance CRM transformed into a calibration solution.

OREAS 251b is intended for the following uses:



- For the monitoring of laboratory performance in the analysis of analytes reported in Table 1 in geological samples;
- For the verification of analytical methods for analytes reported in Table 1;
- For the calibration of instruments used in the determination of the concentration of analytes reported in Table 1.

## STABILITY AND STORAGE INSTRUCTIONS

OREAS 251b is low in reactive sulphide (~0.01 wt.% S) and in its unopened state and under normal conditions of storage has a shelf life beyond ten years. Its stability will be monitored at regular intervals and purchasers notified if any changes are observed.

### Single-use sachets

Following analysis of the CRM subsample it is the manufacturers' expectation that any remaining material is discarded. The stability of the material after opening the sachet is not within the scope of proper use. However, if opened sachets are resealed after opening, then under ordinary\* storage conditions the CRM will have a shelf-life beyond ten years.

*\*ordinary storage conditions: means storage not in direct sunlight in a dry, clean, well-ventilated area at temperatures between -5° and 50°C.*

### Repeat-use packaging (e.g., 1kg plastic jars)

The stability of the CRM after opening the lid of the plastic jar is only affected by local atmospheric conditions with regard to oxidation and hygroscopic change. There is no segregation affect (please see our [Technical Note on Particle Segregation](#)).

The primary cause of change through oxidation is in relation to the breakdown of sulphide minerals to sulphates and is negligible for OREAS 251b given its low sulphur concentration (~0.01 wt.% S).

Hygroscopic change is the amount of absorbed moisture (weakly held H<sub>2</sub>O- molecules on the surface of exposed material) following exposure to the local atmosphere. Usually, equilibration of material to the local atmosphere will only occur if the material is spread into a thin (~2mm thick) layer and left exposed for a period of 2 hours. OREAS 251b contains a non-hygroscopic matrix and therefore, exposure to a local atmosphere that is significantly different (in terms of temperature and humidity) from the climate during manufacturing will have negligible impact on the precision of results. The 'Physical Properties' section indicates the approximate moisture concentration.

## INSTRUCTIONS FOR CORRECT USE

The certified values for OREAS 251b refer to the concentration level in its packaged state. It should not be dried prior to weighing and analysis. 1kg jars permit repeated sampling as long as the lid is promptly re-secured to prevent airborne contamination.

### Minimum sample size

As a practical guide, the minimum mass of sample used should match the typical mass that the laboratories used in the interlaboratory (round robin) certification program. This means

that different sample masses should be used depending on the operationally defined methodology.

- Au by fire assay:  $\geq 25\text{g}$ ;
- Au by aqua regia digestion:  $\geq 15\text{g}$ ;
- Au by cyanide leach:  $\geq 20\text{g}$ ;
- Au by PhotonAssay: recommended gross mass\*  $490 \pm 20\text{ g}$ ;
- 4-acid digestion with ICP-OES and/or MS finish:  $\geq 0.25\text{g}$ ;
- Aqua regia digestion with ICP-OES and/or MS finish:  $\geq 0.5\text{g}$ .

*\*Gross mass refers to the mass of the entire jar assembly, including jar base, jar lid and contents. These value ranges were developed using a  $\sim 40\text{g}$  empty jar mass but should be achievable for any jar-lid combination.*

## **QC monitoring using multiples of the Standard Deviation (SD)**

In the application of SD's in monitoring performance it is important to note that not all laboratories function at the same level of proficiency and that different methods in use at a particular laboratory have differing levels of precision. Each laboratory has its own inherent SD (for a specific concentration level and analyte-method pair) based on the analytical process and this SD is not directly related to the round robin program.

The majority of data generated in the round robin program was produced by a selection of world class laboratories. The SD's thus generated are more constrained than those that would be produced across a randomly selected group of laboratories. To produce more generally achievable SD's the 'pooled' SD's provided in this report include inter-laboratory bias. This 'one size fits all' approach may require revision at the discretion of the QC manager concerned following careful scrutiny of QC control charts.

The performance gates shown in Table 1 are intended only to be used as an initial guide as to what a laboratory may be able to achieve. Over a period of time monitoring your own laboratory's data for this CRM, SDs should be calculated directly from your own laboratory's process. This will enable you to establish more specific performance gates that are fit for purpose for your application as well as the ability to monitor bias. If your long-term trend analysis shows an average value that is within the 95% expanded uncertainty interval then generally there is no cause for concern in regard to bias.

It is important to note that in the analytical industry there is no standardisation of the aqua regia digestion process. This method is a partial empirical digest and differences in recoveries for various analytes are commonplace. These are caused by variations in the digest conditions and can include the ratio of nitric to hydrochloric acids, acid strength, temperatures, leach times and secondary digestions. Recoveries for sulphide-hosted base metal sulphides approach total values, however, other analytes, in particular the lithophile elements, show greater sensitivity to method parameters. This can result in lack of consensus in an inter-laboratory certification program for these elements. The approach applied here is to report certified values in those instances where reasonable agreement exists amongst a majority of participating laboratories. The results of specific laboratories may differ significantly from the certified values, but will, nonetheless, be valid and reproducible in the context of the specifics of the aqua regia method in use. Users of this reference material should, therefore, be mindful of this limitation when applying the certified values in a quality control program.

## HANDLING INSTRUCTIONS

Fine powders pose a risk to eyes and lungs and therefore standard precautions including the use of safety glasses and dust masks are advised.

## LEGAL NOTICE

Ore Research & Exploration Pty Ltd has prepared and statistically evaluated the property values of this reference material to the best of its ability. The Purchaser by receipt hereof releases and indemnifies Ore Research & Exploration Pty Ltd from and against all liability and costs arising from the use of this material and information.

## DOCUMENT HISTORY

Revision No.	Date	Changes applied
4	17 <sup>th</sup> Jul, 2025	Updated the recommended gross mass for use in PhotonAssay analysis.
4	6 <sup>th</sup> Jun, 2025	Updated the recommended gross mass for use in PhotonAssay analysis.
3	29 <sup>th</sup> Jun, 2023	Revised the Au by PhotonAssay Certified Value and it's associated uncertainty (following the commissioning of more instruments available for round robin since the initial publication).
2	25 <sup>th</sup> Mar, 2022	Corrected typo in 'Source Material' section.
1	29 <sup>th</sup> Oct, 2021	Corrected list of 'Participating Laboratories'.
0	22 <sup>nd</sup> Sep, 2021	First publication.

## QMS CERTIFICATION

ORE Pty Ltd is accredited for compliance with ISO 17034.



ORE Pty Ltd is ISO 9001:2015 certified by Lloyd's Register Quality Assurance Ltd for its quality management system including development, manufacturing, certification and supply of CRMs.



## CERTIFYING OFFICER



17<sup>th</sup> July, 2025

Craig Hamlyn (B.Sc. Hons - Geology), Technical Manager - ORE P/L

## REFERENCES

- [1] Govett, G.J.S. (1983). Handbook of Exploration Geochemistry, Volume 2: Statistics and Data Analysis in Geochemical Prospecting (Variations of accuracy and precision).
- [2] Ingamells, C. O. and Switzer, P. (1973). A Proposed Sampling Constant for Use in Geochemical Analysis, Talanta 20, 547-568.
- [3] ISO Guide 30:2015. Terms and definitions used in connection with reference materials.
- [4] ISO Guide 31:2015. Reference materials – Contents of certificates and labels.
- [5] ISO Guide 35:2017. Certification of reference materials - General and statistical principals.
- [6] ISO Guide 98-3:2008. Guide to the expression of uncertainty in measurement (GUM:1995).
- [7] ISO 16269-6:2014, Statistical interpretation of data – Determination of statistical tolerance intervals.
- [8] ISO/TR 16476:2016, Reference Materials – Establishing and expressing metrological traceability of quantity values assigned to reference materials.
- [9] ISO 17025:2017, General requirements for the competence of testing and calibration laboratories.
- [10] ISO Guide 17034:2016. General requirements for the competence of reference material producers.
- [11] Munsell Rock Color Book (2014). Rock-Color Chart Committee, Geological Society of America (GSA), Minnesota (USA).
- [12] OREAS-BUP-70-09-11: Statistical Analysis - OREAS Evaluation Method.
- [13] OREAS-TN-04-1498: Stability under transport; an experimental study of OREAS CRMs.
- [14] OREAS-TN-05-1674: Long-term storage stability; an experimental study of OREAS CRMs.
- [15] Thompson, A.; Taylor, B.N.; Guide for the Use of the International System of Units (SI); NIST Special Publication 811; U.S. Government Printing Office: Washington, DC (2008); available at: <https://physics.nist.gov/cuu/pdf/sp811.pdf> (accessed Nov 2021).
- [16] Van der Veen AMH and Pauwels, J. (2001). Uncertainty calculations in the certification of reference materials, Accred Qual Assur 6: 290-294.