

CERTIFICATE OF ANALYSIS FOR

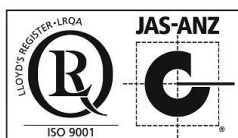
CERTIFIED REFERENCE MATERIAL

OREAS 247b

**Gold Ore (Central Victorian Goldfields & Agate Creek Gold
Mine, Queensland, Australia)**



Accredited for compliance with ISO 17034



COA-1946-OREAS 247b-R1
BUP-70-10-01 Ver:2.0

08-December-2025

Table 1. Certified Values, Uncertainty & Tolerance Intervals in OREAS 247b.

Constituent	Certified Value	95% Expanded Uncertainty		95% Tolerance Limits	
		Low	High	Low	High
Pb Fire Assay					
Au, Gold (ppm)	42.18	41.68	42.69	42.04*	42.33*
Bi Fire Assay					
Au, Gold (ppm)	42.92	42.28	43.56	42.80*	43.03*
PhotonAssay™ (recommended gross mass 395-435 g)					
Au, Gold (ppm)	43.65	43.17	44.14	43.61*	43.70*
4-Acid Digestion					
Ag, Silver (ppm)	15.0	14.4	15.7	14.6	15.4
Al, Aluminium (wt.%)	4.67	4.53	4.81	4.58	4.76
As, Arsenic (wt.%)	0.385	0.372	0.398	0.379	0.390
Ba, Barium (ppm)	368	358	379	361	375
Be, Beryllium (ppm)	1.94	1.85	2.03	1.85	2.03
Bi, Bismuth (ppm)	0.66	0.61	0.70	0.63	0.68
Ca, Calcium (wt.%)	0.682	0.658	0.706	0.669	0.694
Cd, Cadmium (ppm)	0.099	0.076	0.121	IND	IND
Ce, Cerium (ppm)	59	57	62	57	61
Co, Cobalt (ppm)	10.3	9.9	10.7	10.0	10.6
Cr, Chromium (ppm)	77	72	81	74	79
Cs, Caesium (ppm)	7.35	6.98	7.71	7.15	7.54
Cu, Copper (ppm)	245	237	252	240	249
Dy, Dysprosium (ppm)	2.30	2.11	2.49	2.19	2.41
Eu, Europium (ppm)	0.68	0.62	0.73	0.63	0.73
Fe, Iron (wt.%)	3.10	3.02	3.18	3.04	3.16
Ga, Gallium (ppm)	15.0	14.3	15.6	14.5	15.4
Hf, Hafnium (ppm)	2.61	2.38	2.85	2.49	2.74
Ho, Holmium (ppm)	0.45	0.39	0.50	0.40	0.49
In, Indium (ppm)	0.067	0.059	0.074	0.060	0.073
K, Potassium (wt.%)	1.82	1.76	1.87	1.78	1.85
La, Lanthanum (ppm)	30.3	28.8	31.7	29.4	31.2
Li, Lithium (ppm)	46.7	44.7	48.6	45.8	47.5
Lu, Lutetium (ppm)	0.20	0.18	0.22	IND	IND
Mg, Magnesium (wt.%)	0.828	0.800	0.856	0.814	0.842
Mn, Manganese (wt.%)	0.030	0.029	0.031	0.029	0.030
Mo, Molybdenum (ppm)	29.1	27.6	30.7	28.4	29.8
Na, Sodium (wt.%)	0.264	0.253	0.275	0.258	0.270
Nb, Niobium (ppm)	8.80	8.10	9.50	8.45	9.15
Nd, Neodymium (ppm)	25.8	24.0	27.6	25.1	26.5

SI unit equivalents: ppm (parts per million; 1×10^{-6}) \equiv mg/kg; wt.% (weight per cent) \equiv % (mass fraction).

*Gold Tolerance Limits for typical 30 g lead/bismuth collection fire assay and 395-435 g PhotonAssay™ methods are determined from 20 x 85 mg INAA results and the Sampling Constant (Ingamells & Switzer, 1973).

Note: intervals may appear asymmetric due to rounding.

IND = indeterminate (due to limited reading resolution of the methods employed).

Table 1 continued.

Constituent	Certified Value	95% Expanded Uncertainty		95% Tolerance Limits	
		Low	High	Low	High
4-Acid Digestion continued					
Ni, Nickel (ppm)	31.0	30.1	32.0	30.2	31.8
P, Phosphorus (wt.%)	0.037	0.035	0.038	0.035	0.038
Pb, Lead (ppm)	43.0	40.5	45.4	41.6	44.3
Rb, Rubidium (ppm)	117	111	124	114	121
Re, Rhenium (ppm)	< 0.002	IND	IND	IND	IND
S, Sulphur (wt.%)	0.868	0.842	0.895	0.855	0.882
Sb, Antimony (wt.%)	0.365	0.348	0.381	0.357	0.372
Sc, Scandium (ppm)	7.42	7.01	7.83	7.26	7.58
Se, Selenium (ppm)	2.23	1.43	3.03	1.84	2.63
Sm, Samarium (ppm)	4.72	4.33	5.12	4.58	4.86
Sn, Tin (ppm)	3.01	2.81	3.21	2.86	3.16
Sr, Strontium (ppm)	89	85	92	86	91
Ta, Tantalum (ppm)	0.59	0.54	0.63	0.55	0.63
Tb, Terbium (ppm)	0.43	0.38	0.48	0.40	0.46
Te, Tellurium (ppm)	0.16	0.12	0.20	0.14	0.18
Th, Thorium (ppm)	10.1	9.4	10.8	9.8	10.4
Ti, Titanium (wt.%)	0.209	0.201	0.218	0.204	0.215
Tl, Thallium (ppm)	0.68	0.64	0.72	0.65	0.72
U, Uranium (ppm)	2.27	2.13	2.40	2.17	2.36
V, Vanadium (ppm)	57	54	59	55	59
W, Tungsten (ppm)	7.73	7.02	8.44	7.34	8.12
Yb, Ytterbium (ppm)	1.33	1.16	1.49	1.24	1.41
Zn, Zinc (ppm)	80	78	83	78	82
Zr, Zirconium (ppm)	87	84	91	84	90
Aqua Regia Digestion					
Ag, Silver (ppm)	15.0	14.5	15.6	14.6	15.5
Al, Aluminium (wt.%)	0.915	0.829	1.002	0.889	0.942
As, Arsenic (wt.%)	0.382	0.370	0.394	0.372	0.391
Ba, Barium (ppm)	75	68	82	73	78
Be, Beryllium (ppm)	0.63	0.59	0.67	0.60	0.65
Bi, Bismuth (ppm)	0.66	0.63	0.70	0.64	0.69
Ca, Calcium (wt.%)	0.560	0.538	0.582	0.543	0.576
Cd, Cadmium (ppm)	0.097	0.083	0.112	IND	IND
Ce, Cerium (ppm)	30.8	28.5	33.2	29.9	31.8
Co, Cobalt (ppm)	9.73	9.18	10.27	9.41	10.04
Cr, Chromium (ppm)	47.1	44.9	49.2	45.8	48.3
Cs, Caesium (ppm)	2.20	2.04	2.36	2.15	2.24

SI unit equivalents: ppm (parts per million; 1×10^{-6}) \equiv mg/kg; wt.% (weight per cent) \equiv % (mass fraction).

Note: intervals may appear asymmetric due to rounding.

IND = indeterminate (due to limited reading resolution of the methods employed. For practical purposes the 95% Expanded Uncertainty can be set between zero and a two times multiple of the upper bound/non-detect limit value).

Table 1 continued.

Constituent	Certified Value	95% Expanded Uncertainty		95% Tolerance Limits	
		Low	High	Low	High
Aqua Regia Digestion continued					
Cu, Copper (ppm)	245	239	252	240	251
Fe, Iron (wt.%)	2.83	2.72	2.94	2.76	2.90
Ga, Gallium (ppm)	4.18	3.77	4.58	3.99	4.36
Ge, Germanium (ppm)	0.066	0.043	0.089	IND	IND
Hf, Hafnium (ppm)	0.38	0.33	0.44	0.36	0.41
Hg, Mercury (ppm)	0.17	0.14	0.19	0.15	0.19
In, Indium (ppm)	0.039	0.036	0.042	0.035	0.042
K, Potassium (wt.%)	0.359	0.327	0.391	0.347	0.371
La, Lanthanum (ppm)	14.5	13.1	16.0	14.1	15.0
Li, Lithium (ppm)	7.42	6.75	8.08	7.11	7.72
Mg, Magnesium (wt.%)	0.592	0.573	0.610	0.576	0.608
Mn, Manganese (wt.%)	0.026	0.026	0.027	0.026	0.027
Mo, Molybdenum (ppm)	27.1	26.0	28.2	26.4	27.8
Na, Sodium (wt.%)	0.035	0.028	0.041	0.033	0.037
Ni, Nickel (ppm)	29.4	27.6	31.1	28.4	30.4
P, Phosphorus (wt.%)	0.031	0.029	0.033	0.029	0.032
Pb, Lead (ppm)	36.7	34.8	38.6	35.3	38.1
Rb, Rubidium (ppm)	23.1	21.1	25.0	22.4	23.7
S, Sulphur (wt.%)	0.865	0.844	0.885	0.847	0.883
Sb, Antimony (wt.%)	0.313	0.296	0.330	0.302	0.324
Sc, Scandium (ppm)	2.18	1.94	2.42	2.03	2.33
Se, Selenium (ppm)	1.96	1.64	2.27	1.52	2.39
Sn, Tin (ppm)	1.08	1.00	1.17	1.02	1.15
Sr, Strontium (ppm)	45.7	43.2	48.1	44.0	47.3
Ta, Tantalum (ppm)	< 0.01	IND	IND	IND	IND
Te, Tellurium (ppm)	0.13	0.11	0.15	IND	IND
Th, Thorium (ppm)	6.34	5.83	6.85	6.11	6.58
Ti, Titanium (wt.%)	0.010	0.009	0.011	0.009	0.011
Tl, Thallium (ppm)	0.21	0.20	0.23	0.20	0.23
U, Uranium (ppm)	0.99	0.94	1.05	0.95	1.04
V, Vanadium (ppm)	17.4	16.0	18.8	16.7	18.1
W, Tungsten (ppm)	2.50	2.24	2.77	2.39	2.62
Y, Yttrium (ppm)	5.12	4.85	5.40	4.97	5.27
Zn, Zinc (ppm)	74	71	76	72	75
Zr, Zirconium (ppm)	13.3	12.7	13.9	12.8	13.8

SI unit equivalents: ppm (parts per million; 1×10^{-6}) \equiv mg/kg; wt.% (weight per cent) \equiv % (mass fraction).

Note: intervals may appear asymmetric due to rounding.

IND = indeterminate (due to limited reading resolution of the methods employed. For practical purposes the 95% Expanded Uncertainty can be set between zero and a two times multiple of the upper bound/non-detect limit value).

Table 2. Indicative Values for OREAS 247b.

Constituent	Unit	Value	Constituent	Unit	Value	Constituent	Unit	Value
4-Acid Digestion								
Er	ppm	1.30	Hg	ppm	0.081	Y	ppm	11.6
Gd	ppm	3.37	Pr	ppm	6.99			
Ge	ppm	0.17	Tm	ppm	0.20			
Aqua Regia Digestion								
B	ppm	7.57	Ho	ppm	0.20	Re	ppm	0.001
Dy	ppm	1.20	Lu	ppm	0.065	Sm	ppm	2.77
Er	ppm	0.56	Nb	ppm	0.18	Tb	ppm	0.35
Eu	ppm	0.40	Nd	ppm	14.6	Tm	ppm	< 0.1
Gd	ppm	2.08	Pr	ppm	3.94	Yb	ppm	0.47
Aqua Regia Digestion (sample weights 10-50g)								
Au	ppm	42.58						
Borate fusion XRF								
Al ₂ O ₃	wt. %	9.28	MgO	wt. %	1.42	SiO ₂	wt. %	75.63
CaO	wt. %	0.945	MnO	wt. %	0.030	TiO ₂	wt. %	0.385
Fe ₂ O ₃	wt. %	4.52	P ₂ O ₅	wt. %	0.078			
K ₂ O	wt. %	2.20	S	wt. %	0.879			
Thermogravimetry								
LOI ¹⁰⁰⁰	wt. %	3.87						
Infrared Combustion								
C	wt. %	0.480	S	wt. %	0.895			
Laser Ablation ICP-MS								
Ag	ppm	19.9	Hf	ppm	3.95	Sn	ppm	3.60
As	ppm	4495	Ho	ppm	0.79	Sr	ppm	84
Ba	ppm	375	In	ppm	0.050	Ta	ppm	0.99
Be	ppm	2.00	La	ppm	31.0	Tb	ppm	0.65
Bi	ppm	0.78	Lu	ppm	0.32	Te	ppm	0.15
Cd	ppm	< 0.1	Mn	wt. %	0.030	Th	ppm	10.7
Ce	ppm	60	Mo	ppm	27.3	Ti	wt. %	0.236
Co	ppm	11.1	Nb	ppm	10.1	Tl	ppm	0.40
Cr	ppm	79	Nd	ppm	26.4	Tm	ppm	0.34
Cs	ppm	8.00	Ni	ppm	35.0	U	ppm	2.36
Cu	ppm	307	Pb	ppm	54	V	ppm	61
Dy	ppm	3.79	Pr	ppm	7.30	W	ppm	9.80
Er	ppm	2.25	Rb	ppm	126	Y	ppm	19.9
Eu	ppm	0.74	Re	ppm	0.013	Yb	ppm	2.14
Ga	ppm	16.0	Sb	ppm	4185	Zn	ppm	83
Gd	ppm	4.31	Sc	ppm	7.60	Zr	ppm	131
Ge	ppm	1.65	Sm	ppm	5.11			

SI unit equivalents: ppm (parts per million; 1×10^{-6}) \equiv mg/kg; wt. % (weight per cent) \equiv % (mass fraction).

Note: the number of significant figures reported is not a reflection of the level of certainty of stated values. They are instead an artefact of ORE's in-house CRM-specific LIMS.

TABLE OF CONTENTS

INTRODUCTION	7
SOURCE MATERIAL	7
COMMUNITION AND HOMOGENISATION PROCEDURES	7
PHYSICAL PROPERTIES.....	8
MINERALOGY	8
ANALYTICAL PROGRAM	9
STATISTICAL ANALYSIS	9
Certified Values and their uncertainty intervals	9
Indicative (uncertified) values	10
Homogeneity Evaluation.....	10
PERFORMANCE GATES	12
PREPARER AND SUPPLIER	15
PARTICIPATING LABORATORIES.....	16
METROLOGICAL TRACEABILITY	19
COMMUTABILITY	19
INTENDED USE.....	20
MINIMUM SAMPLE SIZE.....	20
PERIOD OF VALIDITY & STORAGE INSTRUCTIONS	20
INSTRUCTIONS FOR HANDLING & CORRECT USE	21
LEGAL NOTICE.....	23
DOCUMENT HISTORY	23
CERTIFYING OFFICER.....	23
QMS CERTIFICATION.....	23
REFERENCES	23

LIST OF TABLES

Table 1. Certified Values, Uncertainty & Tolerance Intervals in OREAS 247b.	2
Table 2. Indicative Values for OREAS 247b.....	5
Table 3. Physical properties of OREAS 247b.....	8
Table 4. Indicative mineralogy of OREAS 247b by semi-quantitative XRD analysis.	8
Table 5. Neutron Activation Analysis of Au on 20 x 85mg subsamples.	11
Table 6. Performance Gates for OREAS 247b.....	12

LIST OF FIGURES

Figure 1. Au by Pb Fire Assay in OREAS 247b.....	17
Figure 2. Au by PhotonAssay™ in OREAS 247b	18

INTRODUCTION

OREAS reference materials are intended to provide a low-cost method of evaluating and improving the quality of analysis of geological samples. To the geologist they provide a means of implementing quality control in analytical data sets generated in exploration from the grass roots level through to prospect evaluation, and in grade control at mining operations. To the analyst they provide an effective means of calibrating analytical equipment, assessing new techniques and routinely monitoring in-house procedures. OREAS reference materials enable users to successfully achieve process control of these tasks because the observed variance from repeated analysis has its origin almost exclusively in the analytical process rather than the reference material itself. In evaluating laboratory performance with this CRM, the section headed 'Instructions for handling and correct use' should be read carefully.

Table 1 presents the certified values together with their associated 95% expanded uncertainties and tolerance intervals. Table 2 provides indicative values, including major and trace element characterisation. Table 3 lists indicative physical properties, while Table 4 reports indicative mineralogy determined by semi-quantitative XRD analysis. Gold homogeneity, assessed by INAA, is shown in Table 5 and is further demonstrated through a nested ANOVA (see *Homogeneity Evaluation* section). Finally, Table 6 presents the performance gate intervals for all certified values.

Tabulated results of all analytes together with uncorrected means, medians, standard deviations, relative standard deviations and per cent deviation of laboratory means from the corrected mean of means (PDM³) are presented in the detailed certification data for this CRM (**OREAS 247b-DataPack.1.1.251208_133523.xlsx**). The certified values and uncertainties in this Certificate are the sole authoritative figures. Any additional significant figures in the DataPack are provided for reference only and do not affect the certified results.

Results are also presented in scatter plots for Au by Pb fire assay and Au by PhotonAssay™, in Figures 1 and 2 respectively, together with $\pm 3SD$ (magenta) and $\pm 5\%$ (yellow) control lines and certified value (green line). Accepted individual results are coloured blue and individual and dataset outliers are identified in red and violet, respectively.

SOURCE MATERIAL

OREAS 247b was prepared from a blend of high-grade gold ores and barren metasediments sourced from Australia. The majority of the ore was sourced from the central Victorian goldfields, where gold is hosted in a metamorphosed turbidite sequence of interbedded sandstones, siltstones, and shales. Gold mineralisation is predominantly associated with disseminated arsenopyrite and pyrite, with minor stibnite–quartz zones. Material from the Agate Creek Gold Project in the Etheridge Goldfield of northern Queensland was also included to achieve the target gold grade.

COMMINUTION AND HOMOGENISATION PROCEDURES

The materials constituting OREAS 247b was prepared in the following manner:

- Drying of ores and barren materials to constant mass at 105° C;
- Crushing and multi-stage milling of the barren material to >98 % minus 75 microns;
- Crushing and multi-stage milling of the ore to 100 % minus 30 microns;

- Blending the ore and barren material in appropriate proportions to achieve desired grades;
- Homogenisation using OREAS' novel processing technologies;
- Packaging in 60 g units in laminated foil pouches and 1 kg units in plastic wide-mouth jars.

PHYSICAL PROPERTIES

OREAS 247b was tested at ORE Research & Exploration Pty Ltd's onsite facility for various physical properties. Table 3 presents these findings that should be used for informational purposes only.

Table 3. Physical properties of OREAS 247b.

Bulk Density (kg/m ³)	Moisture (wt.%)	Munsell Notation [‡]	Munsell Color [‡]
805	0.66	N7	Light Gray

[‡]The Munsell Rock Color Chart helps geologists and archeologists communicate with colour more effectively by cross-referencing ISCC-NBS colour names with unique Munsell alpha-numeric colour notations for rock colour samples.

MINERALOGY

The semi-quantitative XRD results shown in Table 4 below were undertaken by ALS Metallurgy in Balcatta, Western Australia. The results have been normalised to 100 % and represent the relative proportion of crystalline material. Totals greater or less than 100 % are due to rounding errors.

Some amorphous material may be present. 'Clay mineral' appears to be mainly vermiculite, smectite and illite. 'Kandite group' appears to be mainly kaolinite. A trace of epidote and/or dolomite might be present.

Table 4. Indicative mineralogy of OREAS 247b by semi-quantitative XRD analysis.

Mineral / Mineral Group	% (mass ratio)
Stibnite	1
Chlorite	2
Kandite group	2
Annite - biotite - phlogopite	2
Muscovite and/or illite	15
Plagioclase	1
K-feldspar and/or rutile	1
Quartz	75
Pyrite	1
Gypsum	< 1

ANALYTICAL PROGRAM

Thirty-seven commercial analytical laboratories participated in the program to certify the elements reported in Table 1. The following methods were employed:

- Gold by Pb collection fire assay (25-50 g charge weight) with AAS (17 laboratories), ICP-OES (3 laboratories) and gravimetric finish (5 laboratories);
- Gold by Bi collection fire assay (50 g charge weight) with AAS finish (3 submissions of 6 samples at 1 laboratory);
- Gold by PhotonAssay™ with a recommended gross fill mass of 395-435 g (12 laboratories);
- Full ICP-OES and ICP-MS elemental suites by 4-acid ($\text{HNO}_3\text{-HF-HClO}_4\text{-HCl}$) digestion (up to 17 laboratories depending on the element);
- Full ICP-OES and ICP-MS elemental suites by aqua regia digestion (up to 15 laboratories depending on the element).

For the round robin program, twelve 5 kg test units were collected at predetermined intervals during the bagging stage, immediately after homogenisation. Apart from the PhotonAssay™ program, each participating laboratory received six test portions. The samples received by each laboratory were obtained by taking a 110 g sample from six different 5 kg test units to maximise representation (i.e., from either the odd or even sampling (lot) intervals to maximise representation).

For the Au by PhotonAssay™ program, each of the participating laboratories received three 500 g samples. Laboratories were instructed to prepare PhotonAssay™ jars from each sample and assay each jar in duplicate, generating a total of six results per laboratory. The 2-cycle assay protocol (PAAU02) and recommended gross fill mass range was specified to all participants to ensure consistency in measurement conditions.

The 20 individual INAA results upon which much of the homogeneity evaluation is based, included paired 10 g samples taken from 10 different sampling units. This format enabled a nested ANOVA treatment of the INAA results to evaluate homogeneity (see 'Homogeneity Evaluation' section below).

STATISTICAL ANALYSIS

Certified Values and their uncertainty intervals (Table 1) have been determined for each analyte following removal of individual, laboratory dataset (batch) and 3SD outliers (single iteration).

Outlier evaluation was conducted in accordance with ISO 17034:2017 and ISO 33405:2024. While formal statistical tests were applied, professional statistical judgment was also exercised in determining the validity of potential outliers. Assessment of systematic bias and performance using independent control materials (CRMs) was incorporated to ensure compliance with the referenced standards and to establish metrological traceability of the certified values.

95% Expanded Uncertainty provides a 95 % probability that the true value of the analyte under consideration lies between the upper and lower limits and is calculated according to

the method outlined in [5] and [15]. All known or suspected sources of bias have been investigated or taken into account.

Indicative (uncertified) values (Table 2) are present where the number of laboratories reporting a particular analyte is insufficient (< 5) to support certification or where interlaboratory consensus is poor. This data is intended for 'informational purposes' only.

Standard Deviation intervals (see Table 5, 'Performance Gates') provide an indication of a level of performance that might reasonably be expected from a laboratory being monitored by this CRM in a QA/QC program. They take into account errors attributable to measurement uncertainty and CRM variability. For an effective CRM the contribution of the latter should be negligible in comparison to measurement errors. The Standard Deviation values include all sources of measurement uncertainty: between-laboratory variance, within-run variance (precision errors) and CRM variability.

The SD for each analyte's certified value is calculated from the same filtered data set used to determine the certified value, i.e., after removal of all individual, laboratory dataset (batch) and 3SD outliers (single iteration). These outliers can only be removed after the absolute homogeneity of the CRM has been independently established, i.e., the outliers must be confidently deemed to be analytical rather than arising from inhomogeneity of the CRM. ***The standard deviation is then calculated for each analyte from the pooled accepted analyses generated from the certification program.***

Homogeneity Evaluation

For analytes other than gold, the tolerance limits (ISO 16269:2014) shown in Table 1 were determined using an analysis of precision errors method and are considered a conservative estimate of true homogeneity. The meaning of tolerance limits may be illustrated for Ag by 4-acid digestion, where 99 % of the time ($1-\alpha=0.99$) at least 95 % of subsamples ($p=0.95$) will have concentrations lying between 14.6 and 15.4 ppm. Put more precisely, this means that if the same number of subsamples were taken and analysed in the same manner repeatedly, 99 % of the tolerance intervals so constructed would cover at least 95 % of the total population, and 1 % of the tolerance intervals would cover less than 95 % of the total population. ***Please note that tolerance limits pertain to the homogeneity of the CRM only and should not be used as control limits for laboratory performance.***

The homogeneity of gold has been determined by INAA at ANSTO using the reduced analytical subsample method which utilises the known relationship between standard deviation and analytical subsample weight (Ingamells and Switzer, 1973 [2]). In this approach the sample aliquot is substantially reduced to a point where most of the variability in replicate assays should be due to inhomogeneity of the reference material and measurement error becomes negligible.

Table 5 below shows the gold INAA data determined on 20 x 85 mg subsamples of OREAS 247b. An equivalent scaled version of the results is also provided to demonstrate an appreciation of what this data means if 30g fire assays were undertaken without the normal measurement error associated with this methodology. In this instance, the 1RSD of 0.11 % calculated for a 30 g fire assay sample (2.05 % at 85 mg weights) confirms the high level of gold homogeneity in OREAS 247b.

Table 5. Neutron Activation Analysis of Au (in ppm) on 20 x 85 mg subsamples and showing the equivalent results scaled to a 30 g sample mass typical of fire assay determination.

Replicate No	Au 85 mg actual	Au 30 g equivalent*
1	44.03	44.694
2	43.97	44.691
3	45.47	44.771
4	44.42	44.714
5	45.41	44.767
6	45.28	44.760
7	45.03	44.747
8	44.97	44.744
9	44.22	44.704
10	43.82	44.682
11	43.10	44.644
12	43.13	44.646
13	44.48	44.718
14	44.19	44.702
15	45.83	44.790
16	45.70	44.783
17	45.27	44.760
18	44.13	44.699
19	45.86	44.791
20	46.33	44.816
Mean	44.73	44.73
Median	44.73	44.73
Std Dev.	0.915	0.049
Rel.Std.Dev.	2.05%	0.11%

*Results calculated for a 30g equivalent sample mass using the formula: $x^{30\text{ g Eq}} = \frac{(x^{INAA} - \bar{X}) \times RSD@30\text{ g}}{RSD@85\text{ mg}} + \bar{X}$

where $x^{30\text{ g Eq}}$ = equivalent result calculated for a 30 g sample mass

(x^{INAA}) = raw INAA result at 85 mg

\bar{X} = mean of 85 mg INAA results

The homogeneity of OREAS 247b has also been evaluated in an Analysis of Variance (**ANOVA**) of the INAA data. The 20 samples were comprised of paired samples from each of 10 sampling lot intervals (representative of the prepared batch) and were randomised prior to assigning sample numbers. The duplicate samples enabled an ANOVA by comparison of within- and between-unit variances across the 10 pairs. The purpose of the ANOVA is to test that no statistically significant difference exists in the variance between units to that of the variance within units. This allows an assessment of homogeneity across the entire prepared batch of OREAS 247b. The test was performed using the following parameters:

- Gold INAA – 20 results (1 laboratory providing duplicate analyses on 10 samples where each sample can be viewed as a ‘unit’);
- Null Hypothesis, H_0 : Between-unit variance is no greater than within-unit variance (reject H_0 if p -value < 0.05);
- Alternative Hypothesis, H_1 : Between-unit variance is greater than within-unit variance.

The data was not filtered for outliers prior to the calculation of the p -value. This process derived a p -value of 0.74, a statistically insignificant result so the Null Hypothesis is accepted.

It is important to note that ANOVA is not an absolute measure of homogeneity. Rather, it establishes whether or not the analytes are distributed in a similar manner throughout the packaging run of OREAS 247b and whether the variance between two subsamples from the same unit is statistically distinguishable from the variance of two subsamples taken from any two separate units. A reference material therefore can possess poor absolute homogeneity yet still pass a relative homogeneity (ANOVA) test if the within-unit heterogeneity is large and similar across all units. Based on the statistical analysis of ANOVA and the results of the interlaboratory certification program, it can be concluded that OREAS 247b is fit-for-purpose as a certified reference material (see 'Intended Use' below).

PERFORMANCE GATES

Table 6 below shows intervals calculated for two and three standard deviations. As a guide these intervals may be regarded as warning or rejection for multiple 2SD outliers, or rejection for individual 3SD outliers in QC monitoring, although their precise application should be at the discretion of the QC manager concerned (also see 'Intended Use' section below). Westgard Rules extend the basics of single-rule QC monitoring using multi-rules (for more information visit www.westgard.com/mltirule.htm). A second method utilises a 5 % window calculated directly from the certified value.

Standard deviation is also shown in relative percent for one, two and three relative standard deviations (1RSD, 2RSD and 3RSD) to facilitate an appreciation of the magnitude of these numbers and a comparison with the 5 % window. Caution should be exercised when concentration levels approach lower limits of detection of the analytical methods employed as performance gates calculated from standard deviations tend to be excessively wide whereas those determined by the 5 % method are too narrow. One approach used at commercial laboratories is to set the acceptance criteria at twice the detection level (DL) \pm 10 %.

i.e., Certified Value \pm 10 % \pm 2DL [1].

Table 6. Performance Gates for OREAS 247b.

Constituent	Certified Value	Absolute Standard Deviations					Relative Standard Deviations			5 % window	
		1SD	2SD Low	2SD High	3SD Low	3SD High	1RSD	2RSD	3RSD	Low	High
Pb Fire Assay											
Au, ppm	42.18	1.243	39.70	44.67	38.46	45.91	2.95%	5.89%	8.84%	40.08	44.29
Bi Fire Assay											
Au, ppm	42.92	1.273	40.37	45.46	39.10	46.74	2.97%	5.93%	8.90%	40.77	45.06
PhotonAssay™ (recommended gross mass 395-435 g)											
Au, ppm	43.65	0.977	41.70	45.61	40.72	46.59	2.24%	4.48%	6.72%	41.47	45.84
4-Acid Digestion continued											
Ag, ppm	15.0	0.61	13.8	16.3	13.2	16.9	4.07%	8.15%	12.22%	14.3	15.8
Al, wt. %	4.67	0.156	4.36	4.98	4.20	5.14	3.34%	6.67%	10.01%	4.44	4.90
As, wt. %	0.385	0.015	0.355	0.414	0.341	0.428	3.80%	7.59%	11.39%	0.365	0.404

SI unit equivalents: ppm (parts per million; 1×10^{-6}) \equiv mg/kg; wt. % (weight per cent) \equiv % (mass fraction).

Note 1: intervals may appear asymmetric due to rounding.

Note 2: the number of decimal places quoted does not imply accuracy of the certified value to this level but are given to minimise rounding errors when calculating 2SD and 3SD windows.

Table 6 continued.

Constituent	Certified Value	Absolute Standard Deviations					Relative Standard Deviations			5 % window	
		1SD	2SD Low	2SD High	3SD Low	3SD High	1RSD	2RSD	3RSD	Low	High
4-Acid Digestion continued											
Ba, ppm	368	11	347	390	336	400	2.90%	5.80%	8.71%	350	387
Be, ppm	1.94	0.068	1.81	2.08	1.74	2.14	3.49%	6.98%	10.47%	1.84	2.04
Bi, ppm	0.66	0.042	0.58	0.74	0.53	0.78	6.32%	12.63%	18.95%	0.63	0.69
Ca, wt. %	0.682	0.020	0.643	0.721	0.623	0.740	2.87%	5.73%	8.60%	0.648	0.716
Cd, ppm	0.099	0.018	0.062	0.135	0.043	0.154	18.77%	37.54%	56.31%	0.094	0.103
Ce, ppm	59	2.4	54	64	52	66	4.10%	8.21%	12.31%	56	62
Co, ppm	10.3	0.38	9.6	11.1	9.2	11.4	3.64%	7.29%	10.93%	9.8	10.8
Cr, ppm	77	6.3	64	89	58	96	8.26%	16.53%	24.79%	73	80
Cs, ppm	7.35	0.289	6.77	7.92	6.48	8.21	3.94%	7.87%	11.81%	6.98	7.71
Cu, ppm	245	5	235	255	229	260	2.07%	4.15%	6.22%	232	257
Dy, ppm	2.30	0.107	2.08	2.51	1.98	2.62	4.66%	9.32%	13.98%	2.18	2.41
Eu, ppm	0.68	0.023	0.63	0.72	0.61	0.74	3.34%	6.67%	10.01%	0.64	0.71
Fe, wt. %	3.10	0.055	2.99	3.21	2.93	3.27	1.79%	3.58%	5.37%	2.95	3.26
Ga, ppm	15.0	0.88	13.2	16.7	12.3	17.6	5.88%	11.76%	17.64%	14.2	15.7
Hf, ppm	2.61	0.164	2.28	2.94	2.12	3.11	6.29%	12.58%	18.87%	2.48	2.74
Ho, ppm	0.45	0.035	0.38	0.52	0.34	0.55	7.93%	15.86%	23.79%	0.42	0.47
In, ppm	0.067	0.005	0.057	0.076	0.052	0.081	7.15%	14.30%	21.45%	0.063	0.070
K, wt. %	1.82	0.038	1.74	1.89	1.70	1.93	2.11%	4.22%	6.33%	1.72	1.91
La, ppm	30.3	1.27	27.7	32.8	26.5	34.1	4.18%	8.36%	12.54%	28.8	31.8
Li, ppm	46.7	2.09	42.5	50.9	40.4	52.9	4.47%	8.93%	13.40%	44.3	49.0
Lu, ppm	0.20	0.010	0.18	0.22	0.17	0.23	4.84%	9.67%	14.51%	0.19	0.21
Mg, wt. %	0.828	0.030	0.767	0.889	0.737	0.919	3.66%	7.33%	10.99%	0.787	0.869
Mn, wt. %	0.030	0.001	0.028	0.032	0.027	0.033	3.12%	6.25%	9.37%	0.028	0.031
Mo, ppm	29.1	1.38	26.4	31.9	25.0	33.2	4.73%	9.46%	14.20%	27.7	30.6
Na, wt. %	0.264	0.010	0.243	0.284	0.233	0.295	3.93%	7.85%	11.78%	0.251	0.277
Nb, ppm	8.80	0.742	7.31	10.28	6.57	11.03	8.44%	16.87%	25.31%	8.36	9.24
Nd, ppm	25.8	0.77	24.3	27.4	23.5	28.1	3.00%	5.99%	8.99%	24.5	27.1
Ni, ppm	31.0	1.36	28.3	33.7	26.9	35.1	4.38%	8.76%	13.14%	29.5	32.6
P, wt. %	0.037	0.001	0.034	0.039	0.033	0.040	3.11%	6.22%	9.32%	0.035	0.038
Pb, ppm	43.0	2.41	38.1	47.8	35.7	50.2	5.61%	11.22%	16.83%	40.8	45.1
Rb, ppm	117	4	109	126	105	130	3.68%	7.36%	11.03%	112	123
Re, ppm	< 0.002	IND	IND	IND	IND	IND	IND	IND	IND	IND	IND
S, wt. %	0.868	0.016	0.835	0.901	0.819	0.918	1.90%	3.79%	5.69%	0.825	0.912
Sb, wt. %	0.365	0.021	0.322	0.407	0.301	0.428	5.81%	11.61%	17.42%	0.346	0.383
Sc, ppm	7.42	0.282	6.86	7.99	6.57	8.27	3.81%	7.61%	11.42%	7.05	7.79
Se, ppm	2.23	0.49	1.26	3.21	0.77	3.70	21.87%	43.74%	65.61%	2.12	2.34
Sm, ppm	4.72	0.165	4.39	5.05	4.22	5.22	3.50%	7.01%	10.51%	4.49	4.96
Sn, ppm	3.01	0.244	2.53	3.50	2.28	3.75	8.10%	16.20%	24.30%	2.86	3.16
Sr, ppm	89	2.4	84	93	81	96	2.73%	5.45%	8.18%	84	93
Ta, ppm	0.59	0.030	0.53	0.65	0.50	0.68	5.03%	10.06%	15.09%	0.56	0.62
Tb, ppm	0.43	0.019	0.39	0.47	0.37	0.49	4.48%	8.95%	13.43%	0.41	0.45
Te, ppm	0.16	0.02	0.11	0.21	0.09	0.23	15.05%	30.09%	45.14%	0.15	0.17
Th, ppm	10.1	0.44	9.2	11.0	8.8	11.4	4.36%	8.72%	13.08%	9.6	10.6

SI unit equivalents: ppm (parts per million; 1×10^{-6}) \equiv mg/kg; wt. % (weight per cent) \equiv % (mass fraction).

Note 1: intervals may appear asymmetric due to rounding. IND = indeterminate.

Note 2: the number of decimal places quoted does not imply accuracy of the certified value to this level but are given to minimise rounding errors when calculating 2SD and 3SD windows.

Table 6 continued.

Constituent	Certified Value	Absolute Standard Deviations					Relative Standard Deviations			5 % window	
		1SD	2SD Low	2SD High	3SD Low	3SD High	1RSD	2RSD	3RSD	Low	High
4-Acid Digestion continued											
Ti, wt. %	0.209	0.008	0.193	0.225	0.185	0.233	3.79%	7.58%	11.37%	0.199	0.220
Tl, ppm	0.68	0.050	0.58	0.78	0.53	0.83	7.30%	14.61%	21.91%	0.65	0.72
U, ppm	2.27	0.120	2.03	2.51	1.91	2.63	5.27%	10.55%	15.82%	2.15	2.38
V, ppm	57	2.4	52	62	49	64	4.30%	8.61%	12.91%	54	59
W, ppm	7.73	0.83	6.08	9.38	5.25	10.21	10.68%	21.36%	32.04%	7.34	8.12
Yb, ppm	1.33	0.081	1.16	1.49	1.08	1.57	6.09%	12.18%	18.27%	1.26	1.39
Zn, ppm	80	2.7	75	86	72	89	3.42%	6.83%	10.25%	76	84
Zr, ppm	87	2.4	82	92	80	94	2.77%	5.54%	8.31%	83	92
Aqua Regia Digestion											
Ag, ppm	15.0	0.46	14.1	16.0	13.7	16.4	3.03%	6.06%	9.09%	14.3	15.8
Al, wt. %	0.915	0.073	0.769	1.062	0.696	1.135	7.99%	15.98%	23.97%	0.870	0.961
As, wt. %	0.382	0.012	0.359	0.405	0.347	0.417	3.05%	6.09%	9.14%	0.363	0.401
Ba, ppm	75	5.3	65	86	59	91	7.09%	14.18%	21.28%	71	79
Be, ppm	0.63	0.020	0.59	0.67	0.57	0.69	3.16%	6.31%	9.47%	0.60	0.66
Bi, ppm	0.66	0.025	0.62	0.71	0.59	0.74	3.72%	7.44%	11.16%	0.63	0.70
Ca, wt. %	0.560	0.019	0.522	0.598	0.502	0.617	3.41%	6.83%	10.24%	0.532	0.588
Cd, ppm	0.097	0.015	0.067	0.128	0.052	0.143	15.46%	30.92%	46.38%	0.093	0.102
Ce, ppm	30.8	1.65	27.5	34.1	25.9	35.8	5.35%	10.70%	16.05%	29.3	32.4
Co, ppm	9.73	0.543	8.64	10.81	8.10	11.36	5.58%	11.17%	16.75%	9.24	10.21
Cr, ppm	47.1	1.85	43.4	50.7	41.5	52.6	3.93%	7.85%	11.78%	44.7	49.4
Cs, ppm	2.20	0.194	1.81	2.58	1.62	2.78	8.82%	17.64%	26.46%	2.09	2.31
Cu, ppm	245	8	229	261	221	270	3.28%	6.56%	9.84%	233	258
Fe, wt. %	2.83	0.107	2.62	3.04	2.51	3.15	3.78%	7.56%	11.34%	2.69	2.97
Ga, ppm	4.18	0.53	3.11	5.24	2.58	5.77	12.73%	25.46%	38.20%	3.97	4.39
Ge, ppm	0.066	0.014	0.037	0.094	0.023	0.108	21.64%	43.27%	64.91%	0.062	0.069
Hf, ppm	0.38	0.04	0.30	0.46	0.27	0.50	10.28%	20.57%	30.85%	0.36	0.40
Hg, ppm	0.17	0.02	0.12	0.22	0.09	0.24	14.93%	29.86%	44.78%	0.16	0.17
In, ppm	0.039	0.002	0.035	0.043	0.033	0.044	4.83%	9.66%	14.48%	0.037	0.041
K, wt. %	0.359	0.028	0.304	0.414	0.276	0.442	7.72%	15.44%	23.16%	0.341	0.377
La, ppm	14.5	0.95	12.6	16.4	11.7	17.4	6.57%	13.14%	19.71%	13.8	15.3
Li, ppm	7.42	0.614	6.19	8.65	5.58	9.26	8.28%	16.55%	24.83%	7.05	7.79
Mg, wt. %	0.592	0.016	0.559	0.624	0.543	0.640	2.73%	5.45%	8.18%	0.562	0.621
Mn, wt. %	0.026	0.001	0.024	0.028	0.023	0.029	3.83%	7.66%	11.49%	0.025	0.028
Mo, ppm	27.1	1.42	24.2	29.9	22.8	31.4	5.26%	10.52%	15.77%	25.7	28.4
Na, wt. %	0.035	0.006	0.023	0.046	0.017	0.052	16.63%	33.25%	49.88%	0.033	0.036
Ni, ppm	29.4	1.19	27.0	31.8	25.8	33.0	4.07%	8.13%	12.20%	27.9	30.8
P, wt. %	0.031	0.001	0.029	0.033	0.028	0.033	2.82%	5.64%	8.45%	0.029	0.032
Pb, ppm	36.7	1.34	34.0	39.4	32.7	40.7	3.64%	7.28%	10.92%	34.9	38.5
Rb, ppm	23.1	2.09	18.9	27.2	16.8	29.3	9.05%	18.10%	27.15%	21.9	24.2
S, wt. %	0.865	0.021	0.823	0.907	0.802	0.928	2.43%	4.87%	7.30%	0.821	0.908
Sb, wt. %	0.313	0.018	0.277	0.350	0.259	0.368	5.79%	11.58%	17.37%	0.298	0.329
Sc, ppm	2.18	0.211	1.76	2.60	1.55	2.81	9.70%	19.40%	29.09%	2.07	2.29
Se, ppm	1.96	0.21	1.54	2.38	1.33	2.59	10.75%	21.50%	32.24%	1.86	2.05

SI unit equivalents: ppm (parts per million; 1×10^{-6}) \equiv mg/kg; wt. % (weight per cent) \equiv % (mass fraction).

Note 1: intervals may appear asymmetric due to rounding. IND = indeterminate.

Note 2: the number of decimal places quoted does not imply accuracy of the certified value to this level but are given to minimise rounding errors when calculating 2SD and 3SD windows.

Table 6 continued.

Constituent	Certified Value	Absolute Standard Deviations					Relative Standard Deviations			5 % window	
		1SD	2SD Low	2SD High	3SD Low	3SD High	1RSD	2RSD	3RSD	Low	High
Aqua Regia Digestion continued											
Sn, ppm	1.08	0.069	0.95	1.22	0.88	1.29	6.34%	12.69%	19.03%	1.03	1.14
Sr, ppm	45.7	3.06	39.5	51.8	36.5	54.9	6.71%	13.42%	20.13%	43.4	47.9
Ta, ppm	< 0.01	IND	IND	IND	IND	IND	IND	IND	IND	IND	IND
Te, ppm	0.13	0.02	0.09	0.17	0.07	0.19	14.93%	29.85%	44.78%	0.12	0.13
Th, ppm	6.34	0.246	5.85	6.83	5.60	7.08	3.88%	7.77%	11.65%	6.02	6.66
Ti, wt. %	0.010	0.001	0.008	0.012	0.007	0.013	10.37%	20.75%	31.12%	0.009	0.010
Tl, ppm	0.21	0.020	0.17	0.25	0.15	0.28	9.50%	18.99%	28.49%	0.20	0.22
U, ppm	0.99	0.044	0.91	1.08	0.86	1.12	4.40%	8.80%	13.21%	0.94	1.04
V, ppm	17.4	1.19	15.0	19.8	13.8	21.0	6.86%	13.72%	20.58%	16.5	18.3
W, ppm	2.50	0.32	1.86	3.15	1.54	3.47	12.83%	25.66%	38.49%	2.38	2.63
Y, ppm	5.12	0.247	4.63	5.62	4.38	5.86	4.83%	9.66%	14.48%	4.86	5.38
Zn, ppm	74	1.7	70	77	68	79	2.33%	4.66%	6.99%	70	77
Zr, ppm	13.3	0.56	12.2	14.4	11.6	14.9	4.21%	8.43%	12.64%	12.6	13.9

SI unit equivalents: ppm (parts per million; 1×10^{-6}) \equiv mg/kg; wt. % (weight per cent) \equiv % (mass fraction).

Note 1: intervals may appear asymmetric due to rounding. IND = indeterminate.

Note 2: the number of decimal places quoted does not imply accuracy of the certified value to this level but are given to minimise rounding errors when calculating 2SD and 3SD windows.

PREPARER AND SUPPLIER

Certified reference material OREAS 247b is prepared, certified and supplied by:

ORE Research & Exploration Pty Ltd
37A Hosie Street
Bayswater North VIC 3153
AUSTRALIA

Tel: +613-9729 0333
Web: www.oreas.com
Email: info@ore.com.au

PARTICIPATING LABORATORIES

1. Accura Geomysore Labs Private Limited, Jonnagiri, Kurnool, India
2. Accura Gold Minerals Testing, Namakkal, Tamilnadu, India
3. Actlabs, Ancaster, Ontario, Canada
4. AGAT Laboratories, Calgary, Alberta, Canada
5. ALS, Brisbane, QLD, Australia
6. ALS, Canning Vale, WA, Australia
7. ALS, Kalgoorlie, WA, Australia
8. ALS, Lima, Peru
9. ALS, Loughrea, Galway, Ireland
10. ALS, Malaga, WA, Australia
11. ALS, Vancouver, BC, Canada
12. American Assay Laboratories, Sparks, Nevada, USA
13. ANSTO, Lucas Heights, NSW, Australia
14. ARGETEST Mineral Processing, Ankara, Central Anatolia, Turkey
15. Britannia Mining Solutions, Hamilton, Ontario, Canada
16. Bureau Veritas Geoanalytical, Perth, WA, Australia
17. Gekko Assay Labs, Ballarat, VIC, Australia
18. Intertek, Perth, WA, Australia
19. Intertek, Townsville, QLD, Australia
20. Intertek Minerals Ltd, Tarkwa, Western Region, Ghana
21. MSA ENVAL Laboratories, Yamoussoukro, Côte d'Ivoire
22. MSALABS, Prince George, BC, Canada
23. MSALABS, Val-d'Or, Quebec, Canada
24. MSALABS Timmins, Timmins, Ontario, Canada
25. On Site Laboratory Services, Bendigo, VIC, Australia
26. Paragon Geochemical Laboratories, Sparks, Nevada, USA
27. Paragon Geochemical Laboratories, Surrey, BC, Canada
28. PT Geoservices Ltd, Cikarang, Jakarta Raya, Indonesia
29. PT Indo Mineral Research, Bungursari, West Java, Indonesia
30. PT Intertek Utama Services, Jakarta Timur, DKI Jakarta, Indonesia
31. Saskatchewan Research Council, Saskatoon, Saskatchewan, Canada
32. SGS del Peru, Lima, Peru
33. SGS Geosol Laboratorios Ltda, Vespasiano, Minas Gerais, Brazil
34. SGS Tarkwa, Tarkwa, Western Region, Ghana
35. Shiva Analyticals Ltd, Bangalore North, Karnataka, India
36. Skyline Assayers & Laboratories, Tucson, Arizona, USA
37. Stewart Assay & Environmental Laboratories LLC, Kara-Balta, Chüy, Kyrgyzstan

Please note: To maintain anonymity of participating laboratories, the alphabetical list above does not correspond to the Lab ID numbers shown in the scatter plots below.

Figure 1. Au by Pb Fire Assay in OREAS 247b

SPC.1946.RR1.OREAS 247b.2.Fire Assay.Au.Lab.250909.120201.SS

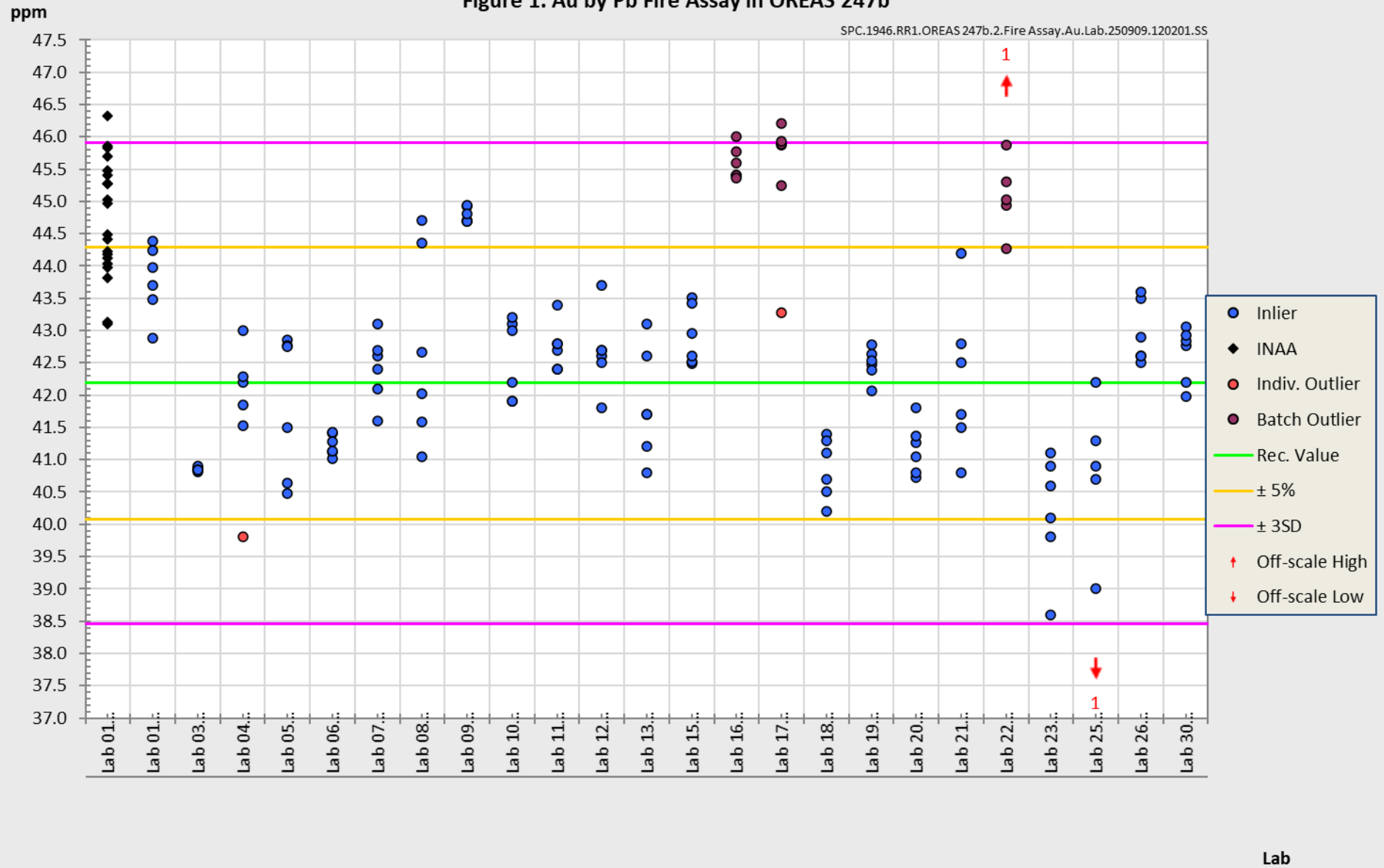
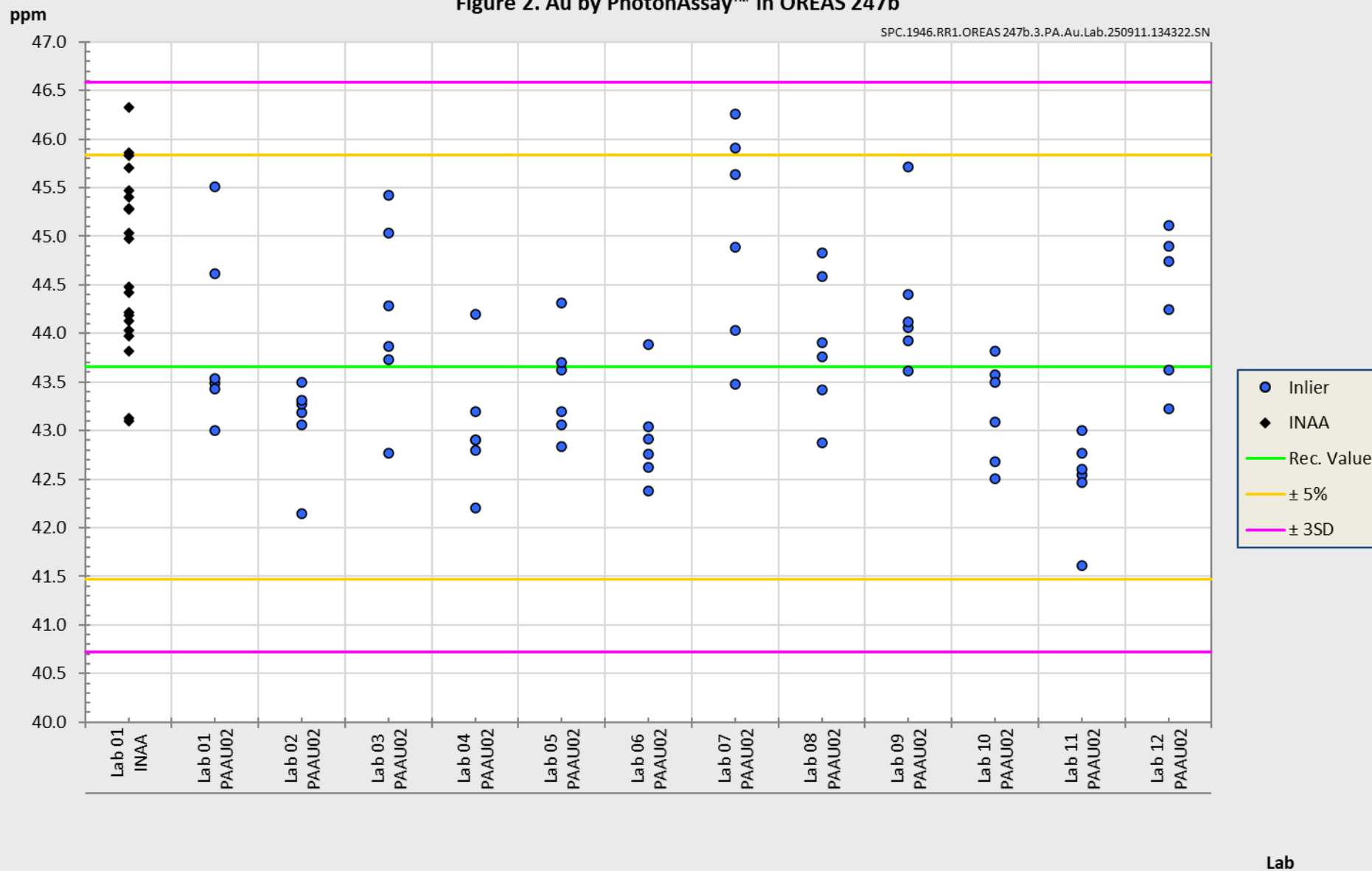


Figure 2. Au by PhotonAssay™ in OREAS 247b

SPC.1946.RR1.OREAS 247b.3.PA.Au.Lab.250911.134322.SN



METROLOGICAL TRACEABILITY

The interlaboratory results that underpin the certified values are metrologically traceable to the international measurement scale (SI) of mass (either as a % mass fraction or as milligrams per kilogram (mg/kg)) [14]. In line with popular use, all data within tables in this certificate are expressed as the mass fraction in either weight percent (wt.%) or parts per million (ppm).

The analytical samples sent to participating laboratories were selected in a manner to be representative of the entire prepared batch of CRM. This representativeness was maintained in each submitted laboratory sample batch and ensures the user that the data is traceable from sample selection through to the analytical results. The systematic sampling method was chosen due to the low risk of overlooking repetitive effects or trends in the batch due to the way the CRM was processed. In line with ISO 17025 [8], each analytical data set received from the participating laboratories has been validated by its assayer through the inclusion of internal reference materials and QC checks during and post analysis.

Participating laboratories were selected based on demonstrated analytical competence, including prior performance in interlaboratory comparison programs conducted by ORE Pty Ltd, with consideration given to their expertise in relevant analytical methods, measurands, and sample matrices. For the measurands reported in this certificate (Table 1), data were sourced from laboratories accredited to ISO/IEC 17025. Where formal accreditation was not held for specific operationally defined measurands, metrological traceability was verified through the use of well-characterised, independently certified reference materials (CRMs) included as control samples in the round robin study.

In accordance with ISO 33405:2024-05 [5], clause 9.2.5, and ISO 17034:2016 [9], clause 7.12.4 b), the use of such control samples provides an acceptable means of demonstrating traceability in the absence of formal accreditation. In this certification program, traceability was further supported by the agreement of measured values for control samples with their known certified values, thereby offering additional confidence in the calibration and validity of measurement results across participating laboratories.

Operationally Defined Measurands

In accordance with ISO 33405:2024-05, Clause 9.2.4, measurands (analytes) may be certified as operationally defined. For these measurands, traceability to the SI may not be achievable because the analytical procedure involves sample transformations (e.g., leaching or extraction). While instrument calibration can be traceable to appropriate units, the transformation steps themselves are not directly traceable and can only be evaluated through reference comparisons or harmonized procedures.

Accordingly, characterisation of these measurands has been based on the concordance of results obtained from multiple laboratories using a common, well-defined procedure. This approach ensures fitness-for-purpose and fulfils the requirements for metrological traceability as specified in ISO 17034 and ISO 33405 for operationally defined measurands.

COMMUTABILITY

The certified values reported herein are derived from measurements performed using analytical methods involving sample pre-treatment steps, such as fusion or acid digestion. These processes convert the sample matrix into a chemically simplified and stable form,

facilitating calibration traceable to primary standards via solution-based calibration protocols. Due to the established robustness and effectiveness of these pre-treatment methods, issues related to commutability are not expected to impact the suitability of this Certified Reference Material (CRM) for its intended use.

OREAS CRMs are prepared from natural ore materials, ensuring they retain matrix and mineralogical characteristics representative of typical exploration, mining, and process samples. Consistent with ISO 17034:2016 and ISO Guide 30, users are advised to select CRMs with matrix and mineralisation styles closely matching those of their routine samples to minimize matrix effects and enhance analytical comparability. Detailed descriptions of the CRM's source material and mineralogical characteristics are provided in the 'Source Material' section to guide appropriate CRM selection.

INTENDED USE

OREAS 247b is intended to cover all activities needed to produce a measurement result. This includes extraction, possible separation steps and the actual measurement process (the signal producing step). OREAS 247b may be used to calibrate the entire procedure by producing a pure substance CRM transformed into a calibration solution.

OREAS 247b is intended for the following uses:

- For the monitoring of laboratory performance in the analysis of analytes reported in Table 1 in geological samples;
- For the verification/ validation of analytical methods for analytes reported in Table 1;
- For the calibration of instruments used in the determination of the concentration of analytes reported in Table 1. When a value provided in this certificate is used to calibrate a measurement process, the uncertainty associated with that value should be appropriately propagated into the user's uncertainty calculation. Users can determine an approximation of the standard uncertainty by calculating one fourth of the width of the Expanded Uncertainty interval given in this certificate (Expanded Uncertainty intervals are provided in Tables 1).

MINIMUM SAMPLE SIZE

To relate analytical determinations to the values in this certificate, the minimum mass of sample used should match the typical mass that the laboratories used in the interlaboratory (round robin) certification program. This means that different minimum sample masses should be used depending on the operationally defined methodology as follows:

- Au by lead fire assay: ≥ 25 g;
- Au by bismuth collection fire assay: ≥ 50 g;
- Au by PhotonAssay™: recommended gross fill mass* 395-435 g;
- 4-acid digestion with ICP-OES and/or MS finish: ≥ 0.25 g;
- Aqua regia digestion with ICP-OES and/or MS finish: ≥ 0.5 g.

**Recommended gross fill mass refers to the mass of the jar assembly, including jar base, lid, and contents. This fill range was developed using a ~40g empty jar but should be achievable for any jar-lid combination.*

PERIOD OF VALIDITY & STORAGE INSTRUCTIONS

The certification of OREAS 247b remains valid, within the specified measurement uncertainties, until at least October 2039, provided the CRM is handled and stored in accordance with the instructions given below. This certification is nullified if the CRM is any way changed or contaminated.

Store in a clean and cool dry place away from direct sunlight.

Long-term stability will be monitored at appropriate intervals and purchasers notified if any changes are observed. The period of validity may well be indefinite and will be reassessed prior to expiry with the aim of extending the validity if possible.

Single-use sachets

OREAS 247b is packaged in single-use, 60 g laminated foil sachets. Following analysis, it is the manufacturer's expectation that any remaining material is discarded. It is the user's responsibility to prevent contamination and avoid prolonged exposure of the sample to the atmosphere prior to analysis.

Repeat-use packaging (e.g., 1 kg plastic jars)

After taking a subsample, users should replace the lid of the jar promptly and securely to prevent accidental spills and airborne contamination. OREAS 247b contains a non-hygroscopic* matrix with an indicative value for moisture provided to enable users to check for changes to stored material by determining moisture in the user's laboratory and comparing the result to the value in Table 3 in this certificate.

The stability of the CRM in regard to oxidation from the breakdown of sulphide minerals to sulphates is minimal given its low sulphur concentration (0.87 wt.% S).

*A non-hygroscopic matrix means exposure to atmospheres significantly different, in terms of temperature and humidity, from the climate during manufacturing should have negligible impact on the precision of results. Hygroscopic moisture is the amount of adsorbed moisture (weakly held H₂O- molecules on the surface of exposed material) following exposure to the local atmosphere. Usually, equilibration of material to the local atmosphere will only occur if the material is spread into a thin (~2mm thick) layer and left exposed for a period of 2 hours.

INSTRUCTIONS FOR HANDLING & CORRECT USE

Fine powders pose a risk to eyes and lungs and therefore standard precautions including the use of safety glasses and dust masks are advised.

Pre-homogenisation of the CRM prior to subsampling and analysis is not necessary as there is no particle segregation under transport [12].

As per routine analysis at commercial laboratories, the certified values derived by borate fusion with XRF finish are on a dry sample basis.

Analytes by all other methods refer to the concentration levels in the packaged state. There is no need for drying prior to weighing and analysis for these methods.

Authoritative Source of Information

This Certificate of Analysis constitutes the primary and authoritative document for the certified values, associated expanded uncertainties, and their correct use. While the accompanying DataPack provides supporting information, including raw data and uncertainty estimates with additional significant figures, these extended figures are provided solely for transparency, convenience and statistical reference. Users must rely exclusively on the values stated in this Certificate, rounded to an appropriate number of significant figures, for all metrological and analytical purposes. Any discrepancy between values presented in the DataPack and those in this Certificate shall be resolved in favour of the information provided herein.

QC monitoring using multiples of the Standard Deviation (SD)

In the application of SD's in monitoring performance it is important to note that not all laboratories function at the same level of proficiency and that different methods in use at a particular laboratory have differing levels of precision. Each laboratory has its own inherent SD (for a specific concentration level and analyte-method pair) based on the analytical process and this SD is not directly related to the round robin program.

The majority of data generated in the round robin program was produced by a selection of world class laboratories. The SD's thus generated are more constrained than those that would be produced across a randomly selected group of laboratories. To produce more generally achievable SD's the 'pooled' SD's provided in this report include interlaboratory bias. This 'one size fits all' approach may require revision at the discretion of the QC manager concerned following careful scrutiny of QC control charts.

The performance gates shown in Table 6 are intended only to be used as a preliminary guide as to what a laboratory may be able to achieve. Over a period of time monitoring your own laboratory's data for this CRM, SD's should be calculated directly from your own laboratory's process. This will enable you to establish more specific performance gates that are fit for purpose for your application as well as the ability to monitor bias. If your long-term trend analysis shows an average value that is within the 95 % expanded uncertainty then generally there is no cause for concern in regard to bias.

For use with the aqua regia digestion method

It is important to note that in the analytical industry there is no standardisation of the aqua regia digestion process. This method is a partial empirical digest and differences in recoveries for various analytes are commonplace. These are caused by variations in the digest conditions and can include the ratio of nitric to hydrochloric acids, acid strength, temperatures, leach times and secondary digestions. Recoveries for sulphide-hosted base metal sulphides approach total values, however, other analytes, in particular the lithophile elements, show greater sensitivity to method parameters. This can result in lack of consensus in an inter-laboratory certification program for these elements.

The approach applied here is to report certified values in those instances where reasonable agreement exists amongst a majority of participating laboratories. The results of specific laboratories may differ significantly from the certified values, but will, nonetheless, be valid and reproducible in the context of the specifics of the aqua regia method in use. Users of this reference material should, therefore, be mindful of this limitation when applying the certified values in a quality control program.

LEGAL NOTICE

Ore Research & Exploration Pty Ltd has prepared and statistically evaluated the property values of this reference material to the best of its ability. The Purchaser by receipt hereof releases and indemnifies Ore Research & Exploration Pty Ltd from and against all liability and costs arising from the use of this material and information.

© COPYRIGHT Ore Research & Exploration Pty Ltd.
Unauthorised copying, reproduction, storage or dissemination is prohibited.

DOCUMENT HISTORY

Revision No.	Date	Changes applied
1	8 th December, 2025	Added Au results (Bismuth Fire Assay method).
0	22 nd September, 2025	First publication.

CERTIFYING OFFICER

Craig Hamlyn (B.Sc. Hons - Geology), Technical Manager - ORE P/L

QMS CERTIFICATION

ORE Pty Ltd is accredited for compliance with ISO 17034:2016 (Accreditation number 20483).



ORE Pty Ltd is ISO 9001:2015 certified by Lloyd's Register Quality Assurance Ltd for its quality management system including development, manufacturing, certification and supply of CRMs.



REFERENCES

- [1] Govett, G.J.S. (1983). Handbook of Exploration Geochemistry, Volume 2: Statistics and Data Analysis in Geochemical Prospecting (Variations of accuracy and precision).
- [2] Ingamells, C. O. and Switzer, P. (1973). A Proposed Sampling Constant for Use in Geochemical Analysis, Talanta 20, 547-568.

- [3] ISO Guide 30:2015. Terms and definitions used in connection with reference materials.
- [4] ISO 33401:2024-01. Reference materials – Contents of certificates, labels and accompanying documentation.
- [5] ISO 33405:2024-05. Reference materials – Approaches for characterization and assessment of homogeneity and stability.
- [6] ISO Guide 98-3:2008. Guide to the expression of uncertainty in measurement (GUM:1995).
- [7] ISO 16269:2014. Statistical interpretation of data – Part 6: Determination of statistical tolerance intervals.
- [8] ISO 17025:2017, General requirements for the competence of testing and calibration laboratories.
- [9] ISO 17034:2016. General requirements for the competence of reference material producers.
- [10] Munsell Rock Color Book (2014). Rock-Color Chart Committee, Geological Society of America (GSA), Minnesota (USA).
- [11] OREAS-BUP-70-09-11: Statistical Analysis - OREAS Evaluation Method.
- [12] OREAS-TN-04-1498: Stability under transport; an experimental study of OREAS CRMs.
- [13] OREAS-TN-05-1674: Long-term storage stability; an experimental study of OREAS CRMs.
- [14] Thompson, A.; Taylor, B.N. (2008); Guide for the Use of the International System of Units (SI); NIST Special Publication 811; U.S. Government Printing Office: Washington, DC; available at: <https://physics.nist.gov/cuu/pdf/sp811.pdf> (accessed Nov 2021).
- [15] Van der Veen A.M.H. et al. (2001). Uncertainty calculations in the certification of reference materials, Accred Qual Assur 6: 290-294.