

CERTIFICATE OF ANALYSIS FOR
CERTIFIED REFERENCE MATERIAL
OREAS 905b
Copper-Gold Oxide Ore, Australia

Table 1. Certified Value, Uncertainty & Tolerance Intervals for Au by FA in OREAS 905b.

Constituent	Certified Value [†]	95% Expanded Uncertainty		95% Tolerance Limits	
		Low	High	Low	High
Pb Fire Assay					
Au, Gold (ppm)	0.381	0.376	0.385	0.378*	0.383*

SI unit equivalents: ppm (parts per million; 1×10^{-6}) \equiv mg/kg.

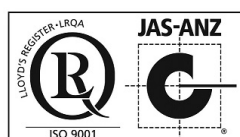
[†]This operationally defined measurand meets the requirements of ISO 17034 and all participating laboratories comply with the requirements of ISO 17025.

*Gold Tolerance Limits for typical 30g fire assay are determined from 20 x 85mg INAA results and the Sampling Constant (Ingamells & Switzer, 1973).

Note: intervals may appear asymmetric due to rounding.



Accredited for compliance with ISO 17034



COA-1742-OREAS905b-R1 BUP-70-10-01 Ver:2.0	11-Dec-2024
---	-------------

Table 2. Certified Value, Uncertainty & Tolerance Intervals for other measurands in OREAS 905b.

Constituent	Certified Value	95% Expanded Uncertainty		95% Tolerance Limits	
		Low	High	Low	High
Aqua Regia Digestion (sample weights 10-50g)					
Au, Gold (ppm)	0.380	0.372	0.389	0.378*	0.383*
4-Acid Digestion					
Ag, Silver (ppm)	0.600	0.544	0.656	0.575	0.625
Al, Aluminium (wt.%)	7.50	7.27	7.73	7.35	7.65
As, Arsenic (ppm)	32.4	30.9	34.0	31.3	33.5
Ba, Barium (ppm)	2711	2614	2807	2658	2763
Be, Beryllium (ppm)	3.00	2.81	3.18	2.91	3.08
Bi, Bismuth (ppm)	4.46	4.22	4.69	4.33	4.59
Ca, Calcium (wt.%)	1.16	1.11	1.21	1.14	1.18
Cd, Cadmium (ppm)	0.46	0.41	0.50	0.43	0.49
Ce, Cerium (ppm)	97	91	102	94	100
Co, Cobalt (ppm)	10.6	10.0	11.2	10.4	10.9
Cr, Chromium (ppm)	17.2	15.3	19.2	16.4	18.1
Cs, Caesium (ppm)	6.14	5.89	6.38	5.97	6.31
Cu, Copper (wt.%)	0.144	0.140	0.148	0.142	0.147
Dy, Dysprosium (ppm)	3.84	3.55	4.12	3.72	3.95
Er, Erbium (ppm)	1.12	1.00	1.24	1.07	1.17
Eu, Europium (ppm)	1.62	1.39	1.85	1.54	1.70
Fe, Iron (wt.%)	3.68	3.58	3.78	3.62	3.75
Ga, Gallium (ppm)	25.3	24.0	26.7	24.6	26.1
Gd, Gadolinium (ppm)	6.16	5.72	6.60	6.00	6.32
Hf, Hafnium (ppm)	6.51	6.15	6.86	6.29	6.72
Ho, Holmium (ppm)	0.55	0.51	0.60	0.52	0.58
In, Indium (ppm)	0.57	0.54	0.60	0.54	0.59
K, Potassium (wt.%)	2.97	2.89	3.05	2.89	3.05
La, Lanthanum (ppm)	47.6	45.0	50.1	46.3	48.9
Li, Lithium (ppm)	30.9	29.6	32.2	30.0	31.9
Lu, Lutetium (ppm)	0.093	0.082	0.105	IND	IND
Mg, Magnesium (wt.%)	0.311	0.301	0.322	0.303	0.319
Mn, Manganese (wt.%)	0.035	0.033	0.036	0.034	0.035
Mo, Molybdenum (ppm)	5.08	4.75	5.40	4.88	5.27
Na, Sodium (wt.%)	2.58	2.50	2.66	2.52	2.63
Nb, Niobium (ppm)	20.8	19.6	22.0	20.1	21.4
Nd, Neodymium (ppm)	40.7	38.3	43.1	39.2	42.3
Ni, Nickel (ppm)	11.0	10.4	11.7	10.5	11.6
P, Phosphorus (wt.%)	0.037	0.035	0.039	0.036	0.038

SI unit equivalents: ppm (parts per million; 1×10^{-6}) \equiv mg/kg; wt.% (weight per cent) \equiv % (mass fraction).

*Gold Tolerance Limits are calculated for a typical 25g aqua regia digestion and determined from 20 x 85mg INAA results and the Sampling Constant (Ingamells & Switzer, 1973).

Note: intervals may appear asymmetric due to rounding;

IND = indeterminate (due to limited reading resolution of the methods employed).

Table 2 continued.

Constituent	Certified Value	95% Expanded Uncertainty		95% Tolerance Limits	
		Low	High	Low	High
4-Acid Digestion continued					
Pb, Lead (ppm)	27.7	26.4	29.0	26.8	28.5
Pr, Praseodymium (ppm)	11.1	10.3	12.0	10.6	11.6
Rb, Rubidium (ppm)	142	135	149	137	147
Re, Rhenium (ppm)	< 0.002	IND	IND	IND	IND
S, Sulphur (wt.%)	0.027	0.025	0.029	0.025	0.029
Sb, Antimony (ppm)	1.73	1.63	1.84	1.68	1.78
Sc, Scandium (ppm)	5.11	4.82	5.40	4.96	5.25
Se, Selenium (ppm)	2.28	1.61	2.95	2.01	2.55
Sm, Samarium (ppm)	7.70	7.26	8.15	7.39	8.01
Sn, Tin (ppm)	4.01	3.77	4.25	3.83	4.19
Sr, Strontium (ppm)	188	180	195	183	192
Ta, Tantalum (ppm)	1.52	1.41	1.62	1.46	1.57
Tb, Terbium (ppm)	0.83	0.76	0.91	0.79	0.87
Te, Tellurium (ppm)	0.097	0.071	0.122	IND	IND
Th, Thorium (ppm)	15.0	14.2	15.8	14.5	15.4
Ti, Titanium (wt.%)	0.161	0.155	0.167	0.158	0.164
Tl, Thallium (ppm)	0.78	0.73	0.83	0.75	0.81
Tm, Thulium (ppm)	0.13	0.11	0.14	IND	IND
U, Uranium (ppm)	5.47	5.20	5.75	5.32	5.63
V, Vanadium (ppm)	10.7	9.9	11.5	10.5	11.0
W, Tungsten (ppm)	1.93	1.79	2.08	1.82	2.05
Y, Yttrium (ppm)	15.8	15.1	16.4	15.4	16.1
Yb, Ytterbium (ppm)	0.68	0.60	0.76	0.66	0.70
Zn, Zinc (ppm)	130	124	135	127	132
Zr, Zirconium (ppm)	241	231	251	236	246
Aqua Regia Digestion					
Ag, Silver (ppm)	0.568	0.537	0.600	0.538	0.598
Al, Aluminium (wt.%)	0.896	0.862	0.929	0.874	0.917
As, Arsenic (ppm)	29.5	28.3	30.8	28.8	30.3
B, Boron (ppm)	< 10	IND	IND	IND	IND
Ba, Barium (ppm)	164	155	173	159	169
Be, Beryllium (ppm)	0.75	0.69	0.81	0.73	0.78
Bi, Bismuth (ppm)	4.41	4.21	4.60	4.30	4.51
Ca, Calcium (wt.%)	0.883	0.859	0.907	0.853	0.914
Cd, Cadmium (ppm)	0.43	0.39	0.47	0.41	0.45
Ce, Cerium (ppm)	78	75	81	76	80
Co, Cobalt (ppm)	9.54	9.02	10.06	9.24	9.84

SI unit equivalents: ppm (parts per million; 1×10^{-6}) \equiv mg/kg; wt.% (weight per cent) \equiv % (mass fraction).

Note: intervals may appear asymmetric due to rounding; IND = indeterminate (due to limited reading resolution of the methods employed. For practical purposes the 95% Expanded Uncertainty can be set between zero and a two times multiple of the upper bound/non-detect limit value).

Table 2 continued.

Constituent	Certified Value	95% Expanded Uncertainty		95% Tolerance Limits	
		Low	High	Low	High
Aqua Regia Digestion continued					
Cr, Chromium (ppm)	13.6	12.7	14.5	12.7	14.5
Cs, Caesium (ppm)	1.44	1.34	1.55	1.39	1.50
Cu, Copper (wt.%)	0.145	0.141	0.148	0.142	0.147
Fe, Iron (wt.%)	3.04	2.96	3.13	2.95	3.14
Ga, Gallium (ppm)	6.43	6.01	6.85	6.22	6.65
Ge, Germanium (ppm)	0.12	0.09	0.14	IND	IND
Hf, Hafnium (ppm)	1.26	1.18	1.35	1.20	1.33
In, Indium (ppm)	0.49	0.47	0.51	0.47	0.51
K, Potassium (wt.%)	0.302	0.286	0.317	0.286	0.317
La, Lanthanum (ppm)	38.7	37.0	40.3	37.8	39.6
Li, Lithium (ppm)	13.9	13.3	14.6	13.6	14.3
Lu, Lutetium (ppm)	0.040	0.033	0.047	IND	IND
Mg, Magnesium (wt.%)	0.194	0.183	0.204	0.183	0.205
Mn, Manganese (wt.%)	0.031	0.030	0.032	0.030	0.031
Mo, Molybdenum (ppm)	4.61	4.35	4.87	4.47	4.75
Na, Sodium (wt.%)	0.106	0.099	0.114	0.099	0.113
Nb, Niobium (ppm)	0.44	0.34	0.53	0.40	0.47
Ni, Nickel (ppm)	9.80	9.36	10.24	9.40	10.21
P, Phosphorus (wt.%)	0.029	0.027	0.030	0.027	0.030
Pb, Lead (ppm)	13.9	13.4	14.5	13.5	14.4
Rb, Rubidium (ppm)	18.6	17.4	19.8	18.0	19.2
Re, Rhenium (ppm)	< 0.002	IND	IND	IND	IND
S, Sulphur (wt.%)	0.025	0.021	0.029	0.023	0.027
Sb, Antimony (ppm)	0.87	0.80	0.93	0.83	0.90
Sc, Scandium (ppm)	1.80	1.67	1.92	1.68	1.91
Se, Selenium (ppm)	2.07	1.79	2.34	1.86	2.27
Sn, Tin (ppm)	0.96	0.86	1.07	0.92	1.00
Sr, Strontium (ppm)	30.3	29.2	31.5	29.6	31.1
Ta, Tantalum (ppm)	< 0.01	IND	IND	IND	IND
Tb, Terbium (ppm)	0.56	0.51	0.60	0.53	0.58
Te, Tellurium (ppm)	0.079	0.063	0.095	IND	IND
Th, Thorium (ppm)	10.2	9.7	10.8	9.9	10.5
Ti, Titanium (wt.%)	0.030	0.029	0.032	0.029	0.032
Tl, Thallium (ppm)	0.12	0.10	0.13	IND	IND
U, Uranium (ppm)	2.92	2.78	3.07	2.84	3.01
V, Vanadium (ppm)	6.25	5.72	6.78	5.96	6.54
W, Tungsten (ppm)	0.36	0.33	0.40	0.33	0.39

SI unit equivalents: ppm (parts per million; 1×10^{-6}) \equiv mg/kg; wt.% (weight per cent) \equiv % (mass fraction).

Note: intervals may appear asymmetric due to rounding; IND = indeterminate (due to limited reading resolution of the methods employed. For practical purposes the 95% Expanded Uncertainty can be set between zero and a two times multiple of the upper bound/non-detect limit value).

Table 2 continued.

Constituent	Certified Value	95% Expanded Uncertainty		95% Tolerance Limits	
		Low	High	Low	High
Aqua Regia Digestion continued					
Y, Yttrium (ppm)	8.87	8.52	9.22	8.68	9.07
Yb, Ytterbium (ppm)	0.34	0.28	0.39	IND	IND
Zn, Zinc (ppm)	91	88	94	89	93
Zr, Zirconium (ppm)	46.8	43.9	49.8	45.2	48.5
Sequential Leach					
Cu-Sol(H ₂ SO ₄), Copper soluble (sulphuric) (wt.%)	0.121	0.118	0.124	0.120	0.123
Cu-Sol(CN), Copper soluble (cyanidation) (wt.%)	0.008	0.007	0.009	0.008	0.009
Cu-Res(4A), Copper residual (post leach) (wt.%)	0.017	0.016	0.019	0.017	0.018
Cu-Tot(Calc), Copper total (calculated) (wt.%)	0.148	0.143	0.153	0.146	0.150

SI unit equivalents: ppm (parts per million; 1×10^{-6}) \equiv mg/kg; wt.% (weight per cent) \equiv % (mass fraction).

Note: intervals may appear asymmetric due to rounding; IND = indeterminate (due to limited reading resolution of the methods employed).

Table 3. Indicative Values for OREAS 905b.

Constituent	Unit	Value	Constituent	Unit	Value	Constituent	Unit	Value
Pb Fire Assay								
Pd	ppb	< 0.5	Pt	ppb	< 0.5			
4-Acid Digestion								
Ge	ppm	0.19	Hg	ppm	< 1			
Aqua Regia Digestion								
Dy	ppm	2.31	Hg	ppm	0.015	Pr	ppm	8.63
Er	ppm	0.59	Ho	ppm	0.30	Pt	ppb	< 5
Eu	ppm	1.03	Nd	ppm	32.3	Sm	ppm	5.74
Gd	ppm	4.52	Pd	ppb	< 10	Tm	ppm	0.061
Borate Fusion XRF								
Al ₂ O ₃	wt.%	14.71	Hf	ppm	14.7	Pb	ppm	107
BaO	ppm	3316	K ₂ O	wt.%	3.63	SiO ₂	wt.%	67.80
CaO	wt.%	1.65	MgO	wt.%	0.548	Sn	ppm	8.40
Cl	ppm	14.9	MnO	wt.%	0.044	SO ₃	wt.%	0.070
Cr ₂ O ₃	ppm	38.0	Na ₂ O	wt.%	3.56	TiO ₂	wt.%	0.275
Cu	wt.%	0.324	Ni	ppm	11.5	Zn	ppm	175
Fe ₂ O ₃	wt.%	5.41	P ₂ O ₅	wt.%	0.082	Zr	ppm	352
Thermogravimetry								
LOI ¹⁰⁰⁰	wt.%	2.29						
Infrared Combustion								
C	wt.%	0.250	S	wt.%	0.039			
Laser Ablation ICP-MS								
Ag	ppm	0.600	Hf	ppm	7.73	Sm	ppm	8.13
As	ppm	31.3	Ho	ppm	0.56	Sn	ppm	5.90
Ba	ppm	2620	In	ppm	0.50	Sr	ppm	187
Be	ppm	3.40	La	ppm	49.1	Ta	ppm	1.57

SI unit equivalents: ppb (parts per billion; 1×10^{-9}) \equiv μ g/kg; ppm (parts per million; 1×10^{-6}) \equiv mg/kg; wt.% (weight per cent) \equiv % (mass fraction).

Note: the number of significant figures reported is not a reflection of the level of certainty of stated values. They are instead an artefact of ORE's in-house CRM-specific LIMS.

Table 3 continued.

Constituent	Unit	Value	Constituent	Unit	Value	Constituent	Unit	Value
Laser Ablation ICP-MS continued								
Bi	ppm	4.72	Lu	ppm	0.090	Tb	ppm	0.84
Cd	ppm	0.45	Mn	wt.%	0.034	Te	ppm	0.15
Ce	ppm	93	Mo	ppm	4.90	Th	ppm	14.8
Co	ppm	10.8	Nb	ppm	21.0	Ti	wt.%	0.167
Cr	ppm	19.0	Nd	ppm	40.7	Tl	ppm	< 0.2
Cs	ppm	5.80	Ni	ppm	10.0	Tm	ppm	0.15
Cu	wt.%	0.142	Pb	ppm	27.5	U	ppm	5.53
Dy	ppm	3.89	Pr	ppm	11.3	V	ppm	10.8
Er	ppm	1.19	Rb	ppm	138	W	ppm	2.00
Eu	ppm	1.53	Re	ppm	< 0.01	Y	ppm	16.9
Ga	ppm	24.1	Sb	ppm	1.65	Yb	ppm	0.72
Gd	ppm	5.95	Sc	ppm	5.05	Zn	ppm	143
Ge	ppm	1.08	Se	ppm	< 5	Zr	ppm	286

SI unit equivalents: ppm (parts per million; 1×10^{-6}) \equiv mg/kg; wt.% (weight per cent) \equiv % (mass fraction).

Note: the number of significant figures reported is not a reflection of the level of certainty of stated values. They are instead an artefact of ORE's in-house CRM-specific LIMS.

TABLE OF CONTENTS

INTRODUCTION	8
SOURCE MATERIAL	8
COMMUNITION AND HOMOGENISATION PROCEDURES	8
PHYSICAL PROPERTIES.....	9
MINERALOGY	9
ANALYTICAL PROGRAM.....	9
STATISTICAL ANALYSIS	10
Homogeneity Evaluation.....	11
PERFORMANCE GATES	12
PARTICIPATING LABORATORIES.....	17
PREPARER AND SUPPLIER	21
METROLOGICAL TRACEABILITY	21
COMMUTABILITY	22
INTENDED USE.....	22
MINIMUM SAMPLE SIZE.....	22
PERIOD OF VALIDITY & STORAGE INSTRUCTIONS	23
INSTRUCTIONS FOR HANDLING & CORRECT USE	23
LEGAL NOTICE.....	24
DOCUMENT HISTORY.....	24
CERTIFYING OFFICER	25
QMS CERTIFICATION.....	25
REFERENCES	25
APPENDIX.....	26

LIST OF TABLES

Table 1. Certified Value, Uncertainty & Tolerance Intervals for Au by FA in OREAS 905b.....	1
Table 2. Certified Value, Uncertainty & Tolerance Intervals for other measurands in OREAS 905b.	2
Table 3. Indicative Values for OREAS 905b.....	5
Table 4. Physical properties of OREAS 905b.....	9
Table 5. Indicative mineralogy of OREAS 905b based on semi-quantitative XRD analysis.....	9
Table 6. Neutron Activation Analysis of Au on 20 x 85mg subsamples	11
Table 7. Performance Gates for OREAS 905b.....	13

LIST OF FIGURES

Figure 1. Au by Fire Assay in OREAS 905b	18
Figure 2. Cu by 4-Acid digestion in OREAS 905b	19
Figure 3. Soluble Cu by H ₂ SO ₄ Leach in OREAS 905b	20

INTRODUCTION

OREAS reference materials are intended to provide a low-cost method of evaluating and improving the quality of analysis of geological samples. To the geologist they provide a means of implementing quality control in analytical data sets generated in exploration from the grass roots level through to prospect evaluation, and in grade control at mining operations. To the analyst they provide an effective means of calibrating analytical equipment, assessing new techniques and routinely monitoring in-house procedures. OREAS reference materials enable users to successfully achieve process control of these tasks because the observed variance from repeated analysis has its origin almost exclusively in the analytical process rather than the reference material itself. In evaluating laboratory performance with this CRM, the section headed 'Instructions for correct use' should be read carefully.

Table 1 (all laboratories accredited to ISO 17025) and Table 2 (most laboratories accredited to ISO 17025) provide the certified values and their associated 95% expanded uncertainty and tolerance intervals, Table 3 shows indicative values including major and trace element characterisation, Table 4 provides some indicative physical properties and Table 5 provides indicative mineralogy based on semi-quantitative XRD analysis. Gold homogeneity (via INAA) is shown in Table 6 and is also demonstrated by a nested ANOVA (see 'Homogeneity Evaluation' section) and Table 7 presents the performance gate intervals for all certified values.

Tabulated results of all analytes together with uncorrected means, medians, standard deviations, relative standard deviations and per cent deviation of lab means from the corrected mean of means (PDM³) are presented in the detailed certification data for this CRM (**OREAS 905b-DataPack.1.0.231123_110623.xlsx**). Results are also presented in scatter plots for Au by fire assay, Cu by 4-acid digestion and Soluble Cu by H₂SO₄ acid leach (Figures 1 to 3, respectively) together with $\pm 3SD$ (magenta) and $\pm 5\%$ (yellow) control lines and certified value (green line). Accepted individual results are coloured blue and individual and dataset outliers are identified in red and violet, respectively.

SOURCE MATERIAL

Certified Reference Material (CRM) OREAS 905b was prepared from a blend of copper and gold oxide ores and barren weathered rhyodacite. The copper ore was sourced from a copper-rich zone within MMG's VMS Gossan Hill deposit at Golden Grove (Western Australia, AU). The gold ores were sourced from the Stawell Gold Mine (Victoria, AU) and Agate Creek Mine (Queensland, AU). The rhyodacite was sourced from a quarry approximately 30km east of Melbourne, Australia.

COMMINUTION AND HOMOGENISATION PROCEDURES

The material constituting OREAS 905b was prepared in the following manner:

- Drying of ore and barren materials to constant mass at 105°C;
- Crushing and milling of the ore materials to 100% minus 30 microns;
- Crushing and milling of the barren material to >98% minus 75 microns;
- Blending ores and barren material in appropriate proportions to achieve the desired grades;
- Homogenisation using OREAS' novel processing technologies;
- Packaging in 10g and 60g units in laminated foil pouches and 500g units in plastic jars.

PHYSICAL PROPERTIES

OREAS 905b was tested at ORE Research & Exploration Pty Ltd's onsite facility for various physical properties. Table 4 presents these findings that should be used for informational purposes only.

Table 4. Physical properties of OREAS 905b.

Bulk Density (kg/m ³)	Moisture (wt.%)	Munsell Notation [‡]	Munsell Color [‡]
695	0.54	5YR 7/2	Grayish Orange Pink

[‡]The Munsell Rock Color Chart helps geologists and archeologists communicate with colour more effectively by cross-referencing ISCC-NBS colour names with unique Munsell alpha-numeric colour notations for rock colour samples.

MINERALOGY

The semi-quantitative XRD results shown in Table 5 below have been normalised to 100 % and represent the relative proportion of crystalline material. Totals greater or less than 100 % are due to rounding errors. A trace amount of orthopyroxene might be present. 'Clay mineral' appears to be mainly smectite and/or vermiculite. Some amorphous material might be present.

Table 5. Indicative mineralogy of OREAS 905b based on semi-quantitative XRD analysis.

Mineral / Mineral Group	% (mass ratio)
Chlorite	5
Kaolinite	2
Annite - biotite - phlogopite	3
Muscovite	7
Plagioclase	24
K-Feldspar	6
Talc	< 1
Quartz	48
Calcite	2
Bassanite	0
Chalcopyrite	< 1
Hematite	2
Magnetite	1
Goethite	< 1

ANALYTICAL PROGRAM

Twenty-eight commercial analytical laboratories participated in the program to certify the elements reported in Tables 1 and 2. The following methods were employed:

- Gold by fire assay (25-50g charge weight) with AAS (17 laboratories), ICP-OES (8 laboratories) finish and ICP-MS (1 laboratory) finish;
- Gold by aqua regia digestion (15-30g sample weight) with AAS (4 laboratories) finish, ICP-OES and/or ICP-MS (14 laboratories) finish;
- Full ICP-OES and ICP-MS elemental suites by 4-acid (HNO₃-HF-HClO₄-HCl) digestion (up to 26 laboratories depending on the element);
- Full ICP-OES and ICP-MS elemental suites by aqua regia digestion (up to 23 laboratories depending on the element);

- Copper by Sequential leach: acid leach, alkaline leach, residual leach and calculated total (up to 23 laboratories depending on the constituent). See Appendix for detailed methodology.

Instrumental neutron activation analysis for Au on 20 x 85mg subsamples was also undertaken at ANSTO, Lucas Heights to confirm homogeneity (see Table 5 below).

Table 3 shows indicative values including major and trace element characterisation based on two samples analysed at Bureau Veritas in Perth, Western Australia which includes:

- Major oxides by lithium borate fusion with X-ray fluorescence;
- LOI at 1000°C by thermogravimetric analyser;
- Trace elements by laser ablation (on the fused bead) with ICP-MS finish;
- Total Carbon and Sulphur by infrared combustion furnace.

For the round robin program, ten 2.5kg test units (lots) were taken at predetermined intervals during the bagging stage, immediately following homogenisation and are considered representative of the entire prepared batch. The six samples received by each laboratory were obtained by taking a 110g scoop split from six different 2.5kg lots.

The 20 individual INAA results upon which much of the homogeneity evaluation is based, included paired 10g samples taken from 10 different sampling units. This format enabled a nested ANOVA treatment of the INAA results to evaluate homogeneity (see 'Homogeneity Evaluation' section below).

STATISTICAL ANALYSIS

Certified Values and their uncertainty intervals (Tables 1 and 2) have been determined for each analyte following removal of individual, laboratory dataset (batch) and 3SD outliers (single iteration).

For individual outliers within a laboratory batch the z-score test is used in combination with a second method that determines the per cent deviation of the individual value from the batch median. Outliers in general are selected on the basis of z-scores > 2.5 and with per cent deviations (i) > 3 and (ii) more than three times the average absolute per cent deviation for the batch. Each laboratory data set mean is tested for outlying status based on z-score discrimination and rejected if > 2.5. After individual and laboratory data set (batch) outliers have been eliminated a non-iterative 3 standard deviation filter is applied, with those values lying outside this window also relegated to outlying status. However, while statistics are taken into account, the exercise of a statistician's prerogative plays a significant role in identifying outliers.

Certified Values are the means of accepted laboratory means after outlier filtering and are the present best estimate of the true value. The INAA data (see Table 6) is omitted from determination of the certified value for Au and is used solely for the calculation of Tolerance Limits and homogeneity evaluation.

95% Expanded Uncertainty provides a 95% probability that the true value of the analyte under consideration lies between the upper and lower limits and is calculated according to the method outlined in ISO 98-3:2008 [6]. All known or suspected sources of bias have been investigated or taken into account.

Indicative (uncertified) values (Table 3) are present where the number of laboratories reporting a particular analyte is insufficient (< 5) to support certification or where interlaboratory consensus is poor.

Homogeneity Evaluation

The tolerance limits (ISO 16269:2014) shown in Tables 1 and 2 were determined using an analysis of precision errors method and are considered a conservative estimate of true homogeneity. The meaning of tolerance limits may be illustrated for copper by 4-acid digestion, where 99% of the time ($1-\alpha=0.99$) at least 95% of subsamples ($\rho=0.95$) will have concentrations lying between 0.142 and 0.147 wt.%. Put more precisely, this means that if the same number of subsamples were taken and analysed in the same manner repeatedly, 99% of the tolerance intervals so constructed would cover at least 95% of the total population, and 1% of the tolerance intervals would cover less than 95% of the total population (ISO Guide 35). **Please note that tolerance limits pertain to the homogeneity of the CRM only and should not be used as control limits for laboratory performance.**

Table 6. Neutron Activation Analysis of Au (in ppm) on 20 x 85mg subsamples and showing the equivalent results scaled to a 30g sample mass typical of fire assay determination.

Replicate No	Au 85mg actual	Au 30g equivalent*
1	0.413	0.401
2	0.384	0.399
3	0.393	0.400
4	0.417	0.401
5	0.383	0.399
6	0.416	0.401
7	0.415	0.401
8	0.395	0.400
9	0.394	0.400
10	0.389	0.400
11	0.411	0.401
12	0.403	0.400
13	0.391	0.400
14	0.383	0.399
15	0.409	0.401
16	0.393	0.400
17	0.396	0.400
18	0.433	0.402
19	0.402	0.400
20	0.384	0.399
Mean	0.400	0.400
Median	0.395	0.400
Std Dev.	0.014	0.001
Rel.Std.Dev.	3.50%	0.187%

*Results calculated for a 30g equivalent sample mass using the formula: $x^{30g Eq} = \frac{(x^{INAA} - \bar{X}) \times RSD@30g}{RSD@85mg} + \bar{X}$

where $x^{30g Eq}$ = equivalent result calculated for a 30g sample mass

(x^{INAA}) = raw INAA result at 85mg

\bar{X} = mean of 85mg INAA results

Table 6 above shows the gold INAA data determined on 20 x 85mg subsamples of OREAS 905b. An equivalent scaled version of the results is also provided to demonstrate an appreciation of what this data means if 30g fire assays were undertaken without the normal measurement error associated with this methodology. In this instance, the 1RSD of 0.187% calculated for a 30g fire assay sample (3.50% at 85mg weights) confirms the high level of gold homogeneity in OREAS 905b.

The homogeneity of gold has been determined by INAA at ANSTO using the reduced analytical subsample method which utilises the known relationship between standard deviation and analytical subsample weight (Ingamells and Switzer, 1973 [2]). In this approach the sample aliquot is substantially reduced to a point where most of the variability in replicate assays should be due to inhomogeneity of the reference material and measurement error becomes negligible.

The homogeneity of OREAS 905b has also been evaluated in an Analysis of Variance (**ANOVA**) of the INAA data. The 20 samples were comprised of paired samples from each of 10 sampling lot intervals (representative of the prepared batch) and were randomised prior to assigning sample numbers. The duplicate samples enabled an ANOVA by comparison of within- and between-unit variances across the 10 pairs. The purpose of the ANOVA is to test that no statistically significant difference exists in the variance between units to that of the variance within units. This allows an assessment of homogeneity across the entire prepared batch of OREAS 905b. The test was performed using the following parameters:

- Gold INAA – 20 results (1 laboratory providing duplicate analyses on 10 samples where each sample can be viewed as a ‘unit’);
- Null Hypothesis, H_0 : Between-unit variance is no greater than within-unit variance (reject H_0 if p -value < 0.05);
- Alternative Hypothesis, H_1 : Between-unit variance is greater than within-unit variance.

The data was not filtered for outliers prior to the calculation of the p -value. This process derived a p -value of 0.75, a statistically insignificant result so the Null Hypothesis is accepted.

It is important to note that ANOVA is not an absolute measure of homogeneity. Rather, it establishes whether or not the analytes are distributed in a similar manner throughout the packaging run of OREAS 905b and whether the variance between two subsamples from the same unit is statistically distinguishable from the variance of two subsamples taken from any two separate units. A reference material therefore can possess poor absolute homogeneity yet still pass a relative homogeneity (ANOVA) test if the within-unit heterogeneity is large and similar across all units.

Based on the statistical analysis of ANOVA and the results of the interlaboratory certification program, it can be concluded that OREAS 905b is fit-for-purpose as a certified reference material (see ‘Intended Use’ below).

PERFORMANCE GATES

The standard deviations (SD’s) intervals reported in Table 7 provide an indication of a level of performance that might reasonably be expected from a laboratory being monitored by this CRM in a QA/QC program. They take into account errors attributable to measurement uncertainty and CRM variability. For an effective CRM the contribution of the latter should be negligible in comparison to measurement errors. The Standard Deviation values include

all sources of measurement uncertainty: between-lab variance, within-run variance (precision errors) and CRM variability.

In the application of SD's in monitoring performance it is important to note that not all laboratories function at the same level of proficiency and that different methods in use at a particular laboratory have differing levels of precision. Each laboratory has its own inherent SD (for a specific concentration level and analyte-method pair) based on the analytical process and this SD is not directly related to the round robin program (see 'Intended Use' section for more detail). The SD for each analyte's certified value is calculated from the same filtered data set used to determine the certified value, i.e., after removal of all individual, lab dataset (batch) and 3SD outliers (single iteration). These outliers can only be removed after the absolute homogeneity of the CRM has been independently established, i.e., the outliers must be confidently deemed to be analytical rather than arising from inhomogeneity of the CRM.

The standard deviation is then calculated for each analyte from the pooled accepted analyses generated from the certification program.

Table 7 below shows intervals calculated for two and three standard deviations. As a guide these intervals may be regarded as warning or rejection for multiple 2SD outliers, or rejection for individual 3SD outliers in QC monitoring, although their precise application should be at the discretion of the QC manager concerned (also see 'Intended Use' section below). Westgard Rules extend the basics of single-rule QC monitoring using multi-rules (for more information visit www.westgard.com/mltirule.htm). A second method utilises a 5% window calculated directly from the certified value.

Standard deviation is also shown in relative percent for one, two and three relative standard deviations (1RSD, 2RSD and 3RSD) to facilitate an appreciation of the magnitude of these numbers and a comparison with the 5% window. Caution should be exercised when concentration levels approach lower limits of detection of the analytical methods employed as performance gates calculated from standard deviations tend to be excessively wide whereas those determined by the 5% method are too narrow. One approach used at commercial laboratories is to set the acceptance criteria at twice the detection level (DL) \pm 10%.

i.e., Certified Value \pm 10% \pm 2DL [1].

Table 7. Performance Gates for OREAS 905b.

Constituent	Certified Value	Absolute Standard Deviations					Relative Standard Deviations			5% window	
		1SD	2SD Low	2SD High	3SD Low	3SD High	1RSD	2RSD	3RSD	Low	High
Pb Fire Assay											
Au, ppm	0.381	0.011	0.358	0.403	0.347	0.414	2.95%	5.91%	8.86%	0.362	0.400
Aqua Regia Digestion (sample weights 10-50g)											
Au, ppm	0.380	0.019	0.343	0.418	0.324	0.436	4.91%	9.83%	14.74%	0.361	0.399
4-Acid Digestion											
Ag, ppm	0.600	0.062	0.477	0.723	0.415	0.785	10.28%	20.55%	30.83%	0.570	0.630
Al, wt.%	7.50	0.259	6.98	8.02	6.72	8.28	3.46%	6.92%	10.38%	7.12	7.87
As, ppm	32.4	1.56	29.3	35.5	27.7	37.1	4.80%	9.60%	14.41%	30.8	34.0
Ba, ppm	2711	137	2436	2985	2299	3122	5.06%	10.13%	15.19%	2575	2846

SI unit equivalents: ppm (parts per million; 1×10^{-6}) \equiv mg/kg; wt.% (weight per cent) \equiv % (mass fraction).

Note 1: intervals may appear asymmetric due to rounding.

Note 2: the number of decimal places quoted does not imply accuracy of the certified value to this level but are given to minimise rounding errors when calculating 2SD and 3SD windows.

Table 7 continued.

Constituent	Certified Value	Absolute Standard Deviations					Relative Standard Deviations			5% window	
		1SD	2SD Low	2SD High	3SD Low	3SD High	1RSD	2RSD	3RSD	Low	High
4-Acid Digestion continued											
Be, ppm	3.00	0.238	2.52	3.47	2.28	3.71	7.95%	15.91%	23.86%	2.85	3.15
Bi, ppm	4.46	0.270	3.92	5.00	3.65	5.27	6.05%	12.10%	18.15%	4.24	4.68
Ca, wt. %	1.16	0.064	1.03	1.29	0.97	1.35	5.47%	10.94%	16.41%	1.10	1.22
Cd, ppm	0.46	0.05	0.37	0.55	0.32	0.60	10.19%	20.37%	30.56%	0.44	0.48
Ce, ppm	97	5.0	87	107	82	112	5.20%	10.40%	15.61%	92	102
Co, ppm	10.6	0.63	9.4	11.9	8.7	12.5	5.92%	11.83%	17.75%	10.1	11.2
Cr, ppm	17.2	2.5	12.3	22.2	9.8	24.7	14.35%	28.71%	43.06%	16.4	18.1
Cs, ppm	6.14	0.220	5.70	6.58	5.48	6.80	3.58%	7.16%	10.75%	5.83	6.44
Cu, wt. %	0.144	0.003	0.137	0.151	0.134	0.155	2.39%	4.77%	7.16%	0.137	0.151
Dy, ppm	3.84	0.243	3.35	4.32	3.11	4.57	6.34%	12.69%	19.03%	3.65	4.03
Er, ppm	1.12	0.075	0.97	1.27	0.90	1.35	6.68%	13.35%	20.03%	1.07	1.18
Eu, ppm	1.62	0.24	1.15	2.09	0.91	2.33	14.52%	29.05%	43.57%	1.54	1.70
Fe, wt. %	3.68	0.133	3.42	3.95	3.28	4.08	3.62%	7.24%	10.87%	3.50	3.87
Ga, ppm	25.3	1.46	22.4	28.2	20.9	29.7	5.76%	11.52%	17.28%	24.1	26.6
Gd, ppm	6.16	0.269	5.62	6.70	5.35	6.97	4.37%	8.73%	13.10%	5.85	6.47
Hf, ppm	6.51	0.426	5.65	7.36	5.23	7.78	6.55%	13.09%	19.64%	6.18	6.83
Ho, ppm	0.55	0.026	0.50	0.60	0.47	0.63	4.66%	9.32%	13.99%	0.52	0.58
In, ppm	0.57	0.025	0.52	0.62	0.49	0.64	4.47%	8.94%	13.41%	0.54	0.59
K, wt. %	2.97	0.114	2.74	3.20	2.63	3.31	3.84%	7.68%	11.52%	2.82	3.12
La, ppm	47.6	2.19	43.2	51.9	41.0	54.1	4.60%	9.19%	13.79%	45.2	49.9
Li, ppm	30.9	1.57	27.8	34.1	26.2	35.6	5.08%	10.16%	15.23%	29.4	32.5
Lu, ppm	0.093	0.009	0.075	0.112	0.066	0.121	9.80%	19.61%	29.41%	0.089	0.098
Mg, wt. %	0.311	0.013	0.285	0.338	0.272	0.351	4.20%	8.40%	12.60%	0.296	0.327
Mn, wt. %	0.035	0.001	0.032	0.037	0.031	0.038	3.20%	6.40%	9.59%	0.033	0.036
Mo, ppm	5.08	0.290	4.50	5.66	4.21	5.94	5.70%	11.41%	17.11%	4.82	5.33
Na, wt. %	2.58	0.101	2.37	2.78	2.27	2.88	3.93%	7.86%	11.80%	2.45	2.71
Nb, ppm	20.8	1.38	18.0	23.5	16.6	24.9	6.63%	13.25%	19.88%	19.7	21.8
Nd, ppm	40.7	1.42	37.9	43.6	36.5	45.0	3.49%	6.99%	10.48%	38.7	42.8
Ni, ppm	11.0	0.52	10.0	12.1	9.5	12.6	4.73%	9.47%	14.20%	10.5	11.6
P, wt. %	0.037	0.002	0.033	0.041	0.031	0.042	5.10%	10.20%	15.30%	0.035	0.039
Pb, ppm	27.7	1.22	25.2	30.1	24.0	31.3	4.41%	8.81%	13.22%	26.3	29.1
Pr, ppm	11.1	0.53	10.1	12.2	9.5	12.7	4.78%	9.56%	14.34%	10.6	11.7
Rb, ppm	142	7	129	156	122	163	4.79%	9.58%	14.37%	135	149
Re, ppm	< 0.002	IND	IND	IND	IND	IND	IND	IND	IND	IND	IND
S, wt. %	0.027	0.004	0.020	0.034	0.016	0.038	13.16%	26.32%	39.48%	0.026	0.028
Sb, ppm	1.73	0.106	1.52	1.94	1.42	2.05	6.09%	12.18%	18.27%	1.65	1.82
Sc, ppm	5.11	0.296	4.52	5.70	4.22	6.00	5.80%	11.60%	17.40%	4.85	5.36
Se, ppm	2.28	0.44	1.41	3.15	0.98	3.59	19.08%	38.16%	57.24%	2.17	2.40
Sm, ppm	7.70	0.318	7.07	8.34	6.75	8.66	4.13%	8.25%	12.38%	7.32	8.09
Sn, ppm	4.01	0.237	3.54	4.48	3.30	4.72	5.90%	11.80%	17.70%	3.81	4.21
Sr, ppm	188	10	167	209	156	219	5.57%	11.14%	16.71%	178	197
Ta, ppm	1.52	0.125	1.27	1.77	1.14	1.89	8.22%	16.45%	24.67%	1.44	1.59
Tb, ppm	0.83	0.042	0.75	0.92	0.71	0.96	5.07%	10.14%	15.20%	0.79	0.87
Te, ppm	0.097	0.016	0.065	0.128	0.049	0.144	16.51%	33.03%	49.54%	0.092	0.101

SI unit equivalents: ppm (parts per million; 1×10^{-6}) \equiv mg/kg; wt. % (weight per cent) \equiv % (mass fraction).

Note 1: intervals may appear asymmetric due to rounding; IND = indeterminate.

Note 2: the number of decimal places quoted does not imply accuracy of the certified value to this level but are given to minimise rounding errors when calculating 2SD and 3SD windows.

Table 7 continued.

Constituent	Certified Value	Absolute Standard Deviations					Relative Standard Deviations			5% window	
		1SD	2SD Low	2SD High	3SD Low	3SD High	1RSD	2RSD	3RSD	Low	High
4-Acid Digestion continued											
Th, ppm	15.0	0.89	13.2	16.8	12.3	17.7	5.95%	11.90%	17.85%	14.2	15.7
Ti, wt. %	0.161	0.006	0.149	0.173	0.142	0.180	3.83%	7.67%	11.50%	0.153	0.169
Tl, ppm	0.78	0.036	0.71	0.85	0.67	0.89	4.62%	9.23%	13.85%	0.74	0.82
Tm, ppm	0.13	0.008	0.11	0.14	0.10	0.15	6.53%	13.06%	19.59%	0.12	0.13
U, ppm	5.47	0.308	4.86	6.09	4.55	6.39	5.62%	11.24%	16.87%	5.20	5.75
V, ppm	10.7	0.98	8.8	12.7	7.8	13.7	9.09%	18.19%	27.28%	10.2	11.3
W, ppm	1.93	0.106	1.72	2.15	1.62	2.25	5.49%	10.97%	16.46%	1.84	2.03
Y, ppm	15.8	0.75	14.3	17.2	13.5	18.0	4.74%	9.47%	14.21%	15.0	16.5
Yb, ppm	0.68	0.047	0.58	0.77	0.54	0.82	6.94%	13.88%	20.81%	0.64	0.71
Zn, ppm	130	7	116	143	109	150	5.19%	10.38%	15.57%	123	136
Zr, ppm	241	9	222	260	213	270	3.94%	7.88%	11.82%	229	253
Aqua Regia Digestion											
Ag, ppm	0.568	0.028	0.512	0.625	0.483	0.654	5.00%	10.00%	15.00%	0.540	0.597
Al, wt. %	0.896	0.038	0.819	0.973	0.781	1.011	4.29%	8.57%	12.86%	0.851	0.941
As, ppm	29.5	1.58	26.4	32.7	24.8	34.3	5.34%	10.68%	16.02%	28.1	31.0
B, ppm	< 10	IND	IND	IND	IND	IND	IND	IND	IND	IND	IND
Ba, ppm	164	13	138	190	125	203	7.96%	15.91%	23.87%	156	172
Be, ppm	0.75	0.061	0.63	0.88	0.57	0.94	8.16%	16.32%	24.47%	0.72	0.79
Bi, ppm	4.41	0.202	4.00	4.81	3.80	5.01	4.59%	9.18%	13.77%	4.19	4.63
Ca, wt. %	0.883	0.030	0.824	0.943	0.794	0.973	3.38%	6.75%	10.13%	0.839	0.927
Cd, ppm	0.43	0.026	0.38	0.48	0.35	0.51	6.15%	12.30%	18.46%	0.41	0.45
Ce, ppm	78	3.3	71	84	68	88	4.27%	8.53%	12.80%	74	82
Co, ppm	9.54	0.477	8.59	10.50	8.11	10.97	5.00%	10.00%	15.01%	9.06	10.02
Cr, ppm	13.6	1.00	11.6	15.6	10.6	16.6	7.35%	14.70%	22.05%	12.9	14.3
Cs, ppm	1.44	0.141	1.16	1.73	1.02	1.87	9.75%	19.51%	29.26%	1.37	1.52
Cu, wt. %	0.145	0.004	0.136	0.153	0.132	0.158	2.97%	5.94%	8.91%	0.137	0.152
Fe, wt. %	3.04	0.142	2.76	3.33	2.62	3.47	4.67%	9.34%	14.00%	2.89	3.20
Ga, ppm	6.43	0.639	5.15	7.71	4.51	8.35	9.94%	19.88%	29.82%	6.11	6.75
Ge, ppm	0.12	0.02	0.08	0.15	0.06	0.17	14.53%	29.06%	43.59%	0.11	0.12
Hf, ppm	1.26	0.114	1.04	1.49	0.92	1.61	9.04%	18.07%	27.11%	1.20	1.33
In, ppm	0.49	0.022	0.45	0.53	0.42	0.55	4.45%	8.89%	13.34%	0.46	0.51
K, wt. %	0.302	0.022	0.257	0.347	0.234	0.369	7.43%	14.86%	22.29%	0.287	0.317
La, ppm	38.7	1.90	34.9	42.5	33.0	44.4	4.92%	9.84%	14.76%	36.7	40.6
Li, ppm	13.9	0.91	12.1	15.8	11.2	16.7	6.51%	13.02%	19.54%	13.2	14.6
Lu, ppm	0.040	0.003	0.033	0.047	0.029	0.050	8.82%	17.63%	26.45%	0.038	0.042
Mg, wt. %	0.194	0.013	0.167	0.220	0.154	0.234	6.89%	13.78%	20.67%	0.184	0.203
Mn, wt. %	0.031	0.001	0.029	0.033	0.027	0.034	3.67%	7.34%	11.00%	0.029	0.032
Mo, ppm	4.61	0.321	3.97	5.25	3.65	5.57	6.97%	13.94%	20.91%	4.38	4.84
Na, wt. %	0.106	0.008	0.090	0.122	0.082	0.130	7.65%	15.30%	22.95%	0.101	0.111
Nb, ppm	0.44	0.10	0.23	0.64	0.13	0.74	23.27%	46.54%	69.81%	0.41	0.46
Ni, ppm	9.80	0.395	9.01	10.59	8.62	10.98	4.03%	8.05%	12.08%	9.31	10.29
P, wt. %	0.029	0.002	0.025	0.032	0.023	0.034	5.99%	11.99%	17.98%	0.027	0.030
Pb, ppm	13.9	0.84	12.3	15.6	11.4	16.5	6.02%	12.04%	18.07%	13.2	14.6
Rb, ppm	18.6	1.17	16.3	21.0	15.1	22.1	6.30%	12.60%	18.90%	17.7	19.5

SI unit equivalents: ppm (parts per million; 1×10^{-6}) \equiv mg/kg; wt. % (weight per cent) \equiv % (mass fraction).

Note 1: intervals may appear asymmetric due to rounding; IND = indeterminate.

Note 2: the number of decimal places quoted does not imply accuracy of the certified value to this level but are given to minimise rounding errors when calculating 2SD and 3SD windows.

Table 7 continued.

Constituent	Certified Value	Absolute Standard Deviations					Relative Standard Deviations			5% window	
		1SD	2SD Low	2SD High	3SD Low	3SD High	1RSD	2RSD	3RSD	Low	High
Aqua Regia Digestion continued											
Re, ppm	< 0.002	IND	IND	IND	IND	IND	IND	IND	IND	IND	IND
S, wt. %	0.025	0.004	0.016	0.034	0.012	0.038	17.58%	35.16%	52.75%	0.024	0.026
Sb, ppm	0.87	0.09	0.69	1.04	0.60	1.13	10.10%	20.20%	30.30%	0.82	0.91
Sc, ppm	1.80	0.140	1.52	2.08	1.38	2.22	7.76%	15.53%	23.29%	1.71	1.89
Se, ppm	2.07	0.193	1.68	2.45	1.49	2.65	9.34%	18.69%	28.03%	1.96	2.17
Sn, ppm	0.96	0.13	0.71	1.22	0.58	1.34	13.15%	26.30%	39.46%	0.91	1.01
Sr, ppm	30.3	1.38	27.6	33.1	26.2	34.5	4.55%	9.09%	13.64%	28.8	31.9
Ta, ppm	< 0.01	IND	IND	IND	IND	IND	IND	IND	IND	IND	IND
Tb, ppm	0.56	0.037	0.48	0.63	0.44	0.67	6.74%	13.48%	20.23%	0.53	0.58
Te, ppm	0.079	0.014	0.051	0.107	0.036	0.122	18.01%	36.02%	54.04%	0.075	0.083
Th, ppm	10.2	0.63	9.0	11.5	8.3	12.1	6.13%	12.27%	18.40%	9.7	10.7
Ti, wt. %	0.030	0.002	0.027	0.033	0.026	0.035	5.12%	10.25%	15.37%	0.029	0.032
Tl, ppm	0.12	0.02	0.08	0.15	0.07	0.17	14.60%	29.20%	43.80%	0.11	0.12
U, ppm	2.92	0.174	2.57	3.27	2.40	3.45	5.96%	11.92%	17.87%	2.78	3.07
V, ppm	6.25	0.483	5.28	7.22	4.80	7.70	7.74%	15.47%	23.21%	5.94	6.56
W, ppm	0.36	0.04	0.28	0.44	0.24	0.49	11.49%	22.98%	34.46%	0.34	0.38
Y, ppm	8.87	0.410	8.05	9.69	7.64	10.10	4.62%	9.23%	13.85%	8.43	9.31
Yb, ppm	0.34	0.06	0.21	0.46	0.15	0.52	18.81%	37.63%	56.44%	0.32	0.35
Zn, ppm	91	2.1	87	95	85	97	2.31%	4.61%	6.92%	86	95
Zr, ppm	46.8	3.70	39.4	54.2	35.7	57.9	7.90%	15.80%	23.70%	44.5	49.2
Sequential Leach (wt. %)											
Cu-Sol(H ₂ SO ₄)	0.121	0.004	0.114	0.128	0.110	0.132	2.99%	5.98%	8.96%	0.115	0.127
Cu-Sol(CN)	0.008	0.002	0.005	0.011	0.004	0.013	18.85%	37.69%	56.54%	0.008	0.009
Cu-Res(4A)	0.017	0.002	0.013	0.021	0.011	0.023	11.63%	23.26%	34.89%	0.016	0.018
Cu-Tot(Calc)	0.148	0.004	0.140	0.156	0.136	0.160	2.72%	5.43%	8.15%	0.141	0.155

SI unit equivalents: ppm (parts per million; 1×10^{-6}) \equiv mg/kg; wt. % (weight per cent) \equiv % (mass fraction).

Note 1: intervals may appear asymmetric due to rounding; IND = indeterminate.

Note 2: the number of decimal places quoted does not imply accuracy of the certified value to this level but are given to minimise rounding errors when calculating 2SD and 3SD windows.

PARTICIPATING LABORATORIES

1. Actlabs, Ancaster, Ontario, Canada
2. Alex Stewart International, Mendoza, Argentina
3. ALS, Johannesburg, South Africa
4. ALS, Lima, Peru
5. ALS, Loughrea, Galway, Ireland
6. ALS, Malaga, WA, Australia
7. ALS, Vancouver, BC, Canada
8. ANSTO, Lucas Heights, NSW, Australia
9. ARGETEST Mineral Processing, Ankara, Central Anatolia, Turkey
10. Bureau Veritas Commodities Canada Ltd, Vancouver, BC, Canada
11. Bureau Veritas Geoanalytical, Perth, WA, Australia
12. Bureau Veritas Minerals, Ankara, Central Anatolia, Turkey
13. CERTIMIN, Lima, Peru
14. Inspectorate (BV), Lima, Peru
15. Intertek Genalysis, Adelaide, SA, Australia
16. Intertek Genalysis, Perth, WA, Australia
17. Intertek Testing Services Philippines, Cupang, Muntinlupa, Philippines
18. MSALABS, Vancouver, BC, Canada
19. PT Geoservices Ltd, Cikarang, Jakarta Raya, Indonesia
20. PT Intertek Utama Services, Jakarta Timur, DKI Jakarta, Indonesia
21. SGS, Ankara, Anatolia, Turkey
22. SGS, Randfontein, Gauteng, South Africa
23. SGS Australia Mineral Services, Perth, WA, Australia
24. SGS Canada Inc., Vancouver, BC, Canada
25. SGS del Peru, Lima, Peru
26. Shiva Analyticals Ltd, Bangalore North, Karnataka, India
27. Skyline Assayers & Laboratories, Tucson, Arizona, USA
28. Stewart Assay & Environmental Laboratories LLC, Kara-Balta, Chüy, Kyrgyzstan

Please note: To preserve anonymity, the above numbered alphabetical list of participating laboratories does not correspond with the Lab ID numbering on the scatter plots below.

Figure 1. Au by Pb Fire Assay in OREAS 905b

SPC.1742.RR1.OREAS 905b.2.Fire Assay.Au.Lab.231122.193815.SN

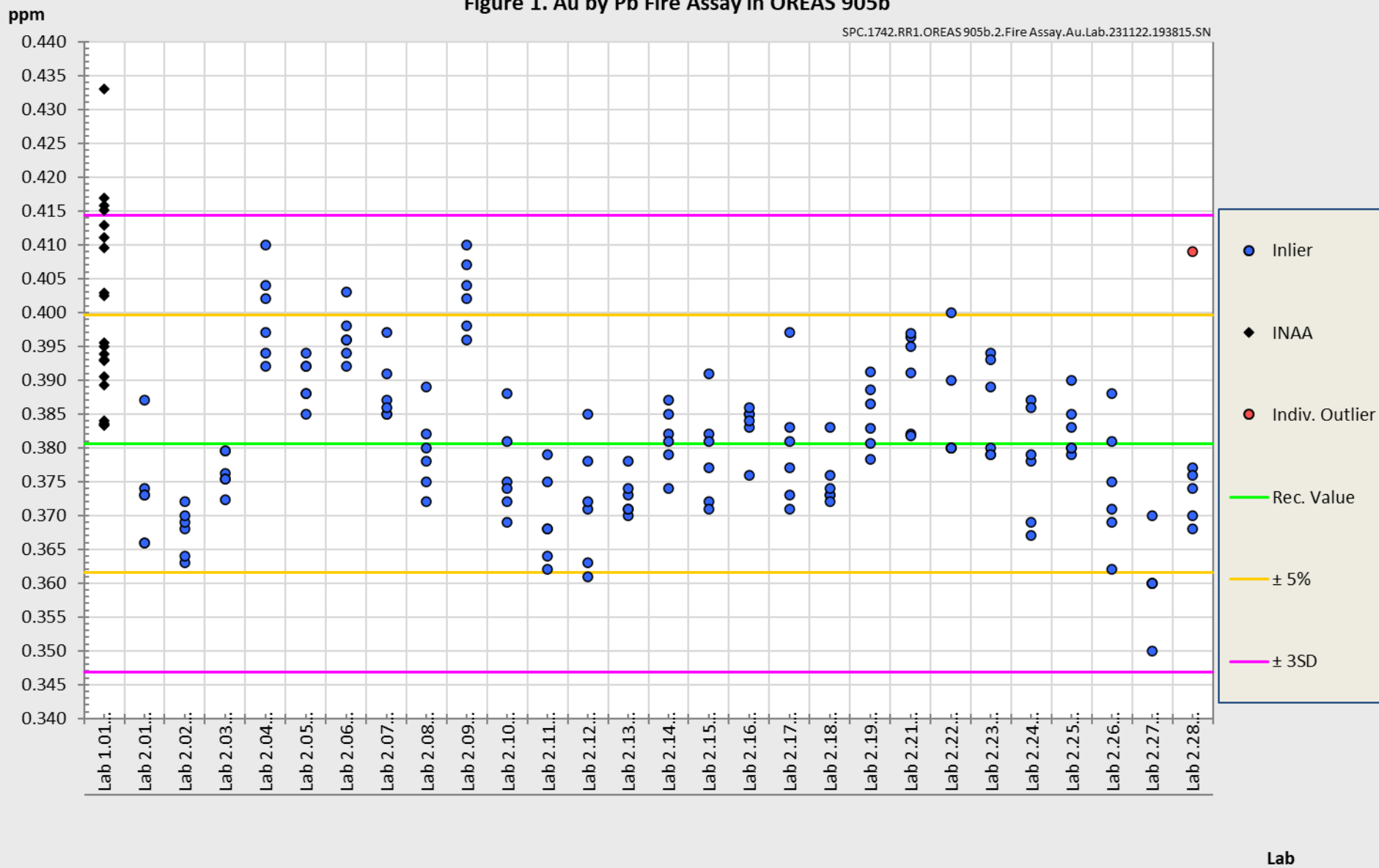


Figure 2. Cu by 4-Acid Digestion in OREAS 905b

SPC.1742.RR1.OREAS 905b.2.4-Acid.Cu.Lab.231122.195827.SS

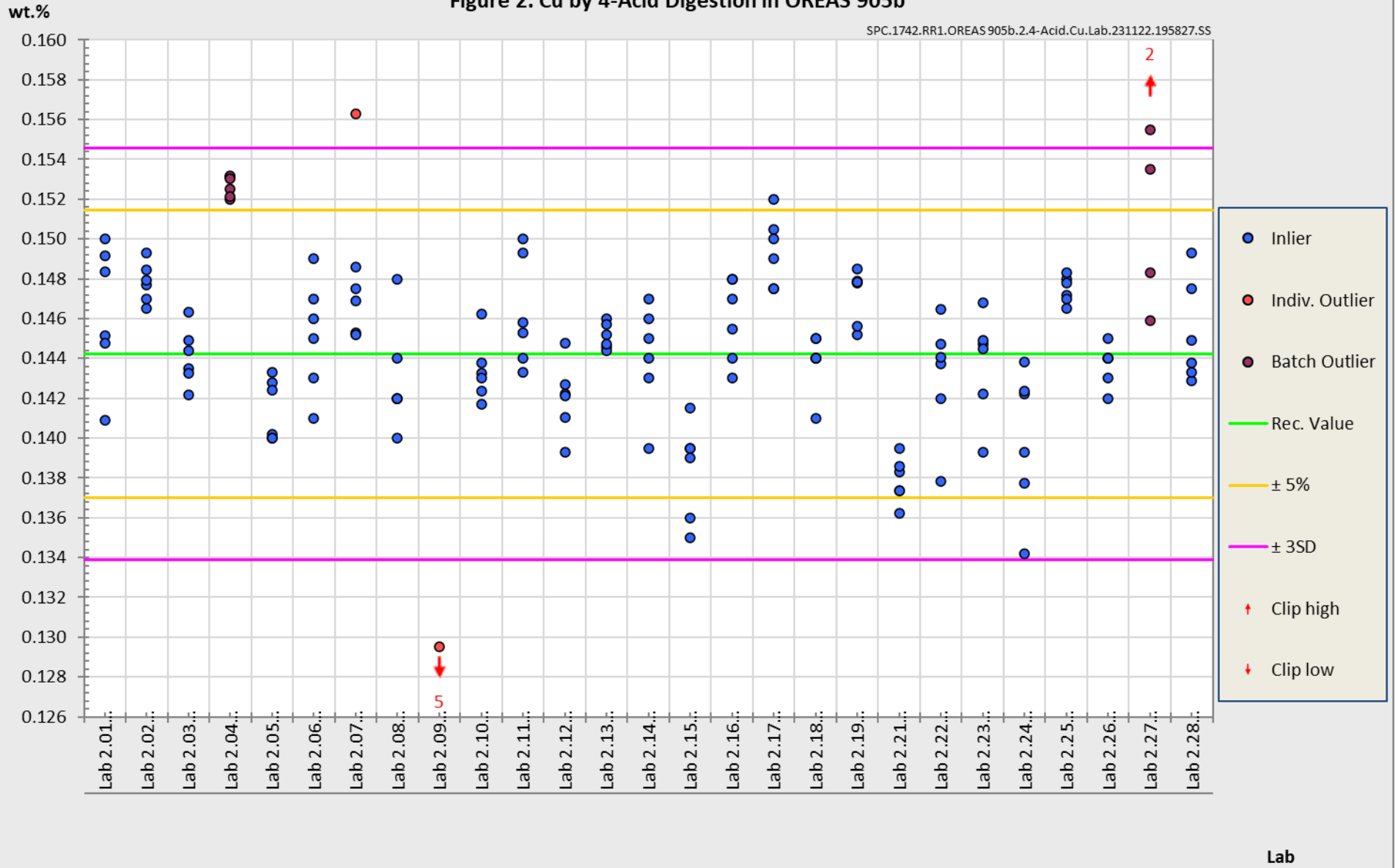
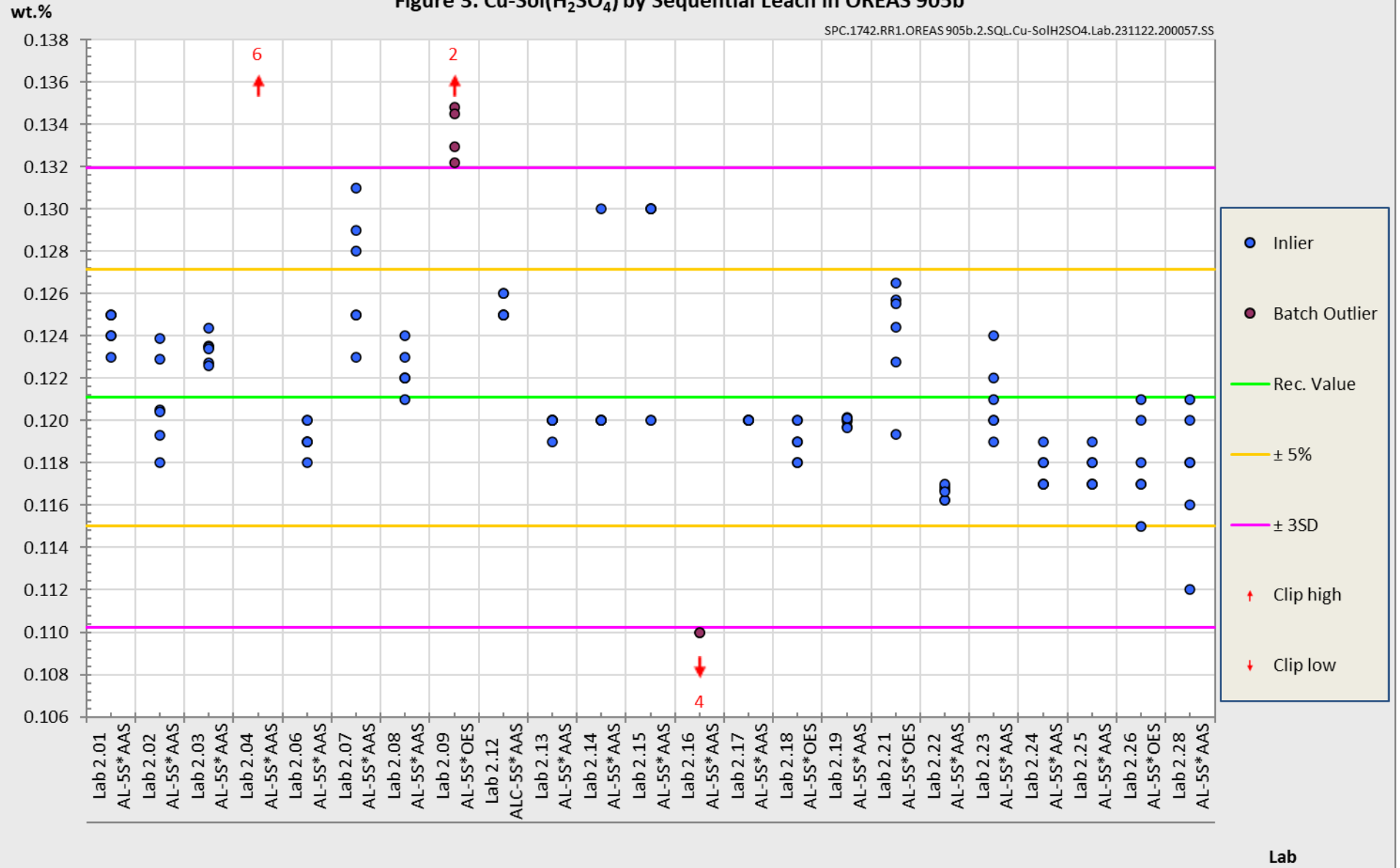


Figure 3. Cu-Sol(H₂SO₄) by Sequential Leach in OREAS 905b

SPC.1742.RR1.OREAS 905b.2.SQL.Cu-SolH2SO4.Lab.231122.200057.SS



PREPARER AND SUPPLIER

Certified reference material OREAS 905b is prepared, certified and supplied by:



ORE Research & Exploration Pty Ltd
37A Hosie Street
Bayswater North VIC 3153
AUSTRALIA

Tel: +613-9729 0333
Fax: +613-9729 8338
Web: www.oreas.com
Email: info@ore.com.au

METROLOGICAL TRACEABILITY

The interlaboratory results that underpin the certified values are metrologically traceable to the international measurement scale (SI) of mass (either as a % mass fraction or as milligrams per kilogram (mg/kg)). In line with popular use, all data within tables in this certificate are expressed as the mass fraction in either weight percent (wt.%) or parts per million (ppm).

The analytical samples sent to participating laboratories were selected in a manner to be representative of the entire prepared batch of CRM. This 'representivity' was maintained in each submitted laboratory sample batch and ensures the user that the data is traceable from sample selection through to the analytical results. The systematic sampling method was chosen due to the low risk of overlooking repetitive effects or trends in the batch due to the way the CRM was processed. In line with ISO 17025 [10], each analytical data set received from the participating laboratories has been validated by its assayer through the inclusion of internal reference materials and QC checks during and post analysis.

The participating laboratories were chosen on the basis of their competence (from past performance in interlaboratory programs undertaken by ORE Pty Ltd) for a particular analytical method, analyte or analyte suite and sample matrix. These laboratories are accredited to ISO 17025 for Au by fire assay (Table 1). The other operationally defined measurands characterised in this certificate (Table 2) are derived from data procured mostly from ISO 17025 accredited laboratories. The certified values presented in this report are calculated from the means of accepted data following robust technical and statistical analysis as detailed in this report.

Guide ISO/TR 16476:2016, section 5.3.1 describes metrological traceability in reference materials as it pertains to the transformation of the measurand. In this section it states, *"Although the determination of the property value itself can be made traceable to appropriate units through, for example, calibration of the measurement equipment used, steps like the transformation of the sample from one physical (chemical) state to another cannot. Such transformations may only be compared with a reference (when available), or among themselves. For some transformations, reference methods have been defined and may be used in certification projects to evaluate the uncertainty associated with such a transformation. In other cases, only a comparison among different laboratories using the same procedure is possible. In this case, it is impossible to demonstrate absence of method bias; therefore, the result is an operationally defined measurand (ISO Guide 35:2017, 9.2.4c)."* Certification takes place on the basis of agreement among operationally defined, independent measurement results.

COMMUTABILITY

The measurements of the results that underlie the certified values contained in this report were undertaken by methods involving pre-treatment (fusion/digestion) of the sample. This served to reduce the sample to a simple and well understood form permitting calibration using simple solutions of the CRM. Due to these methods being well understood and highly effective, commutability is not an issue for this CRM. All OREAS CRMs are sourced from natural ore minerals meaning they will display similar behaviour as routine 'field' samples in the relevant measurement process. Care should be taken to ensure 'matrix matching' as close as practically achievable. The matrix and mineralisation style of the CRM is described in the 'Source Material' section and users should select appropriate CRMs matching these attributes to the field samples being analysed.

INTENDED USE

OREAS 905b is intended to cover all activities needed to produce a measurement result. This includes extraction, possible separation steps and the actual measurement process (the signal producing step). OREAS 905b may be used to calibrate the entire procedure by producing a pure substance CRM transformed into a calibration solution.

OREAS 905b is intended for the following uses:

- For the monitoring of laboratory performance in the analysis of analytes reported in Tables 1 and 2 in geological samples;
- For the verification of analytical methods for analytes reported in Tables 1 and 2;
- For the calibration of instruments used in the determination of the concentration of analytes reported in Tables 1 and 2. When a value provided in this certificate is used to calibrate a measurement process, the uncertainty associated with that value should be appropriately propagated into the user's uncertainty calculation. Users can determine an approximation of the standard uncertainty by calculating one fourth of the width of the Expanded Uncertainty interval given in this certificate (Expanded Uncertainty intervals are provided in Tables 1 and 2).

MINIMUM SAMPLE SIZE

To relate analytical determinations to the values in this certificate, the minimum mass of sample used should match the typical mass that the laboratories used in the interlaboratory (round robin) certification program. This means that different minimum sample masses should be used depending on the operationally defined methodology as follows:

- Au by fire assay: $\geq 25\text{g}$;
- Au by aqua regia digestion: $\geq 15\text{g}$;
- 4-acid digestion with ICP-OES and/or MS finish: $\geq 0.25\text{g}$;
- Aqua regia digestion with ICP-OES and/or MS finish: $\geq 0.5\text{g}$;
- Copper by Sequential leach (acid leach, alkaline leach and calculated total): $\geq 1\text{g}$ (typical minimum weight for this methodology).

PERIOD OF VALIDITY & STORAGE INSTRUCTIONS

The certification of OREAS 905b remains valid, within the specified measurement uncertainties, until November 2038, provided the CRM is handled and stored in accordance with the instructions given below. This certification is nullified if the CRM is any way changed or contaminated.

Store in a clean and cool dry place away from direct sunlight.

Long-term stability will be monitored at appropriate intervals and purchasers notified if any changes are observed. The period of validity may well be indefinite and will be reassessed prior to expiry with the aim of extending the validity if possible.

Single-use sachets (e.g., 10g and 60g unit)

Following analysis, it is the manufacturer's expectation that any remaining material is discarded unless the sachet is promptly resealed. It is the user's responsibility to prevent contamination and minimise exposure to the atmosphere.

Repeat-use packaging (e.g., 500g unit)

After taking a subsample, users should replace the lid of the jar promptly and securely to prevent accidental spills and airborne contamination. OREAS 905b contains a non-hygroscopic* matrix with an indicative value for moisture provided to enable users to check for changes to stored material by determining moisture in the user's laboratory and comparing the result to the value in Table 4 in this certificate.

The stability of the CRM in regard to oxidation from the breakdown of sulphide minerals to sulphates is negligible given its low sulphur concentration (0.04 wt.% S).

*A non-hygroscopic matrix means exposure to atmospheres significantly different, in terms of temperature and humidity, from the climate during manufacturing should have negligible impact on the precision of results. Hygroscopic moisture is the amount of adsorbed moisture (weakly held H₂O- molecules on the surface of exposed material) following exposure to the local atmosphere. Usually, equilibration of material to the local atmosphere will only occur if the material is spread into a thin (~2mm thick) layer and left exposed for a period of 2 hours.

INSTRUCTIONS FOR HANDLING & CORRECT USE

Pre-homogenisation of the CRM prior to subsampling and analysis is not necessary as there is no particle segregation under transport [13].

Fine powders pose a risk to eyes and lungs and therefore standard precautions including the use of safety glasses and dust masks are advised.

QC monitoring using multiples of the Standard Deviation (SD)

In the application of SD's in monitoring performance it is important to note that not all laboratories function at the same level of proficiency and that different methods in use at a particular laboratory have differing levels of precision. Each laboratory has its own inherent SD (for a specific concentration level and analyte-method pair) based on the analytical process and this SD is not directly related to the round robin program.

The majority of data generated in the round robin program was produced by a selection of world class laboratories. The SD's thus generated are more constrained than those that

would be produced across a randomly selected group of laboratories. To produce more generally achievable SD's the 'pooled' SD's provided in this report include interlaboratory bias. This 'one size fits all' approach may require revision at the discretion of the QC manager concerned following careful scrutiny of QC control charts.

The performance gates shown in Table 7 are intended only to be used as a preliminary guide as to what a laboratory may be able to achieve. Over a period of time monitoring your own laboratory's data for this CRM, SD's should be calculated directly from your own laboratory's process. This will enable you to establish more specific performance gates that are fit for purpose for your application as well as the ability to monitor bias. If your long-term trend analysis shows an average value that is within the 95% expanded uncertainty then generally there is no cause for concern in regard to bias.

For use with the aqua regia digestion method

It is important to note that in the analytical industry there is no standardisation of the aqua regia digestion process. This method is a partial empirical digest and differences in recoveries for various analytes are commonplace. These are caused by variations in the digest conditions and can include the ratio of nitric to hydrochloric acids, acid strength, temperatures, leach times and secondary digestions. Recoveries for sulphide-hosted base metal sulphides approach total values, however, other analytes, in particular the lithophile elements, show greater sensitivity to method parameters. This can result in lack of consensus in an inter-laboratory certification program for these elements.

The approach applied here is to report certified values in those instances where reasonable agreement exists amongst a majority of participating laboratories. The results of specific laboratories may differ significantly from the certified values, but will, nonetheless, be valid and reproducible in the context of the specifics of the aqua regia method in use. Users of this reference material should, therefore, be mindful of this limitation when applying the certified values in a quality control program.

LEGAL NOTICE

Ore Research & Exploration Pty Ltd has prepared and statistically evaluated the property values of this reference material to the best of its ability. The Purchaser by receipt hereof releases and indemnifies Ore Research & Exploration Pty Ltd from and against all liability and costs arising from the use of this material and information.

© COPYRIGHT Ore Research & Exploration Pty Ltd.

Unauthorised copying, reproduction, storage or dissemination is prohibited.

DOCUMENT HISTORY

Revision No.	Date	Changes applied
1	11 th December, 2024	Added Mineralogy data (Table 5) and Appendix for Cu Seq Leach methodology.
0	23 rd November, 2023	First publication.

CERTIFYING OFFICER

Craig Hamlyn (B.Sc. Hons - Geology), Technical Manager - ORE Pty Ltd

QMS CERTIFICATION

ORE Pty Ltd is accredited for compliance with ISO 17034:2016.



ORE Pty Ltd is ISO 9001:2015 certified by Lloyd's Register Quality Assurance Ltd for its quality management system including development, manufacturing, certification and supply of CRMs.



REFERENCES

- [1] Govett, G.J.S. (1983). Handbook of Exploration Geochemistry, Volume 2: Statistics and Data Analysis in Geochemical Prospecting (Variations of accuracy and precision).
- [2] Ingamells, C. O. and Switzer, P. (1973). A Proposed Sampling Constant for Use in Geochemical Analysis, Talanta 20, 547-568.
- [3] ISO Guide 30:2015. Terms and definitions used in connection with reference materials.
- [4] ISO Guide 31:2015. Reference materials – Contents of certificates and labels.
- [5] ISO Guide 35:2017. Certification of reference materials - General and statistical principals.
- [6] ISO Guide 98-3:2008. Guide to the expression of uncertainty in measurement (GUM:1995).
- [7] ISO 16269:2014. Statistical interpretation of data – Part 6: Determination of statistical tolerance intervals.
- [8] ISO/TR 16476:2016, Reference Materials – Establishing and expressing metrological traceability of quantity values assigned to reference materials.
- [9] ISO 17025:2017, General requirements for the competence of testing and calibration laboratories.
- [10] ISO 17034:2016. General requirements for the competence of reference material producers.
- [11] Munsell Rock Color Book (2014). Rock-Color Chart Committee, Geological Society of America (GSA), Minnesota (USA).
- [12] OREAS-BUP-70-09-11: Statistical Analysis - OREAS Evaluation Method.
- [13] OREAS-TN-04-1498: Stability under transport; an experimental study of OREAS CRMs.
- [14] OREAS-TN-05-1674: Long-term storage stability; an experimental study of OREAS CRMs.

- [15] Thompson, A.; Taylor, B.N.; Guide for the Use of the International System of Units (SI); NIST Special Publication 811; U.S. Government Printing Office: Washington, DC (2008); available at: <https://physics.nist.gov/cuu/pdf/sp811.pdf> (accessed Nov 2023).
- [16] Van der Veen AMH and Pauwels, J. (2001). Uncertainty calculations in the certification of reference materials, Accred Qual Assur 6: 290-294.

APPENDIX

Specified methodology for Sequential Copper Leach:

a) Soluble Cu by H₂SO₄ acid leach with AAS or ICP finish.

- i.* The sample (0.5 g) is shaken (in automatic shaker) in 5 % v/v sulphuric acid at room temperature for an hour.
- ii.* The solution is subsequently filtered into a flask ensuring the residue is well washed with warm water.
- iii.* The filtrate is diluted to volume with water, mixed and copper content is measured by AAS or ICP-OES.

b) Soluble Cu by NaCN leach with AAS or ICP finish.

- i.* The solid residue from acid leach above is treated with 20 ml of 10 % w/w NaCN and agitated for 30 minutes.
- ii.* The solution is quantitatively separated from solids and analysed by AAS.

c) Residual Cu by 4-acid digestion with AAS or ICP finish.

- i.* The final residue is evaporated to incipient dryness and digested with nitric, perchloric, hydrofluoric and hydrochloric acids until near dryness.
- ii.* The sample is subsequently leached with hydrochloric acid for a short period of time and analysed by AAS or ICP-OES against matrix-matched standards.