

**CERTIFICATE OF ANALYSIS FOR**  
**CERTIFIED REFERENCE MATERIAL**  
**OREAS 211**  
**Gold Ore (Frogs Leg Gold Mine, Western Australia)**

**Table 1. Certified Values and Performance Gates for OREAS 211.**

Constituent	Certified Value	Absolute Standard Deviations					Relative Standard Deviations			5% window	
		1SD	2SD Low	2SD High	3SD Low	3SD High	1RSD	2RSD	3RSD	Low	High
<b>Pb Fire Assay</b>											
Au, ppm	0.768	0.027	0.714	0.822	0.687	0.849	3.51%	7.02%	10.52%	0.729	0.806
<b>Aqua Regia Digestion (sample weights 10-50g)</b>											
Au, ppm	0.730	0.034	0.663	0.798	0.629	0.831	4.61%	9.23%	13.84%	0.694	0.767
<b>Cyanide Leach</b>											
Au, ppm	0.749	0.032	0.684	0.814	0.652	0.846	4.32%	8.65%	12.97%	0.712	0.786
<b>X-ray Photon Assay</b>											
Au, ppm	0.729	0.034	0.661	0.797	0.627	0.831	4.67%	9.34%	14.01%	0.693	0.765
<b>4-Acid Digestion</b>											
Ag, ppm	0.214	0.019	0.176	0.251	0.157	0.270	8.86%	17.73%	26.59%	0.203	0.224
Al, wt. %	6.85	0.161	6.53	7.18	6.37	7.34	2.34%	4.69%	7.03%	6.51	7.20
As, ppm	41.8	2.97	35.9	47.8	32.9	50.7	7.09%	14.19%	21.28%	39.7	43.9
Ba, ppm	186	7	171	200	164	208	3.96%	7.93%	11.89%	176	195
Be, ppm	0.41	0.036	0.34	0.48	0.30	0.52	8.86%	17.72%	26.58%	0.39	0.43
Bi, ppm	0.046	0.008	0.029	0.062	0.020	0.071	18.42%	36.85%	55.27%	0.043	0.048

SI unit equivalents: ppm (parts per million) ≡ mg/kg ≡ µg/g ≡ 0.0001 wt.% ≡ 1000 ppb (parts per billion).

Note 1: intervals may appear asymmetric due to rounding.

Note 2: the number of decimal places quoted does not imply accuracy of the certified value to this level but are given to minimise rounding errors when calculating 2SD and 3SD windows.



**Table 1 continued.**

Constituent	Certified Value	Absolute Standard Deviations					Relative Standard Deviations			5% window	
		1SD	2SD Low	2SD High	3SD Low	3SD High	1RSD	2RSD	3RSD	Low	High
<b>4-Acid Digestion continued</b>											
Ca, wt.%	6.61	0.290	6.03	7.19	5.75	7.48	4.38%	8.76%	13.14%	6.28	6.95
Cd, ppm	0.42	0.029	0.36	0.48	0.33	0.51	6.97%	13.94%	20.91%	0.40	0.44
Ce, ppm	12.3	1.19	9.9	14.7	8.8	15.9	9.65%	19.31%	28.96%	11.7	12.9
Co, ppm	43.8	2.52	38.8	48.9	36.3	51.4	5.74%	11.48%	17.23%	41.6	46.0
Cr, ppm	95	6.5	82	108	75	114	6.84%	13.67%	20.51%	90	99
Cs, ppm	0.69	0.067	0.56	0.83	0.49	0.89	9.62%	19.23%	28.85%	0.66	0.73
Cu, ppm	164	6	152	176	146	182	3.64%	7.28%	10.92%	156	172
Dy, ppm	4.05	0.246	3.56	4.54	3.31	4.79	6.08%	12.16%	18.24%	3.85	4.25
Er, ppm	2.50	0.163	2.18	2.83	2.01	2.99	6.53%	13.05%	19.58%	2.38	2.63
Eu, ppm	0.98	0.040	0.90	1.06	0.86	1.10	4.11%	8.23%	12.34%	0.93	1.03
Fe, wt.%	8.14	0.259	7.63	8.66	7.37	8.92	3.18%	6.35%	9.53%	7.74	8.55
Ga, ppm	15.8	1.02	13.8	17.9	12.8	18.9	6.47%	12.93%	19.40%	15.1	16.6
Gd, ppm	3.50	0.249	3.00	4.00	2.76	4.25	7.10%	14.21%	21.31%	3.33	3.68
Hf, ppm	1.70	0.104	1.49	1.91	1.39	2.01	6.10%	12.21%	18.31%	1.62	1.79
Ho, ppm	0.85	0.038	0.78	0.93	0.74	0.97	4.40%	8.81%	13.21%	0.81	0.90
In, ppm	0.076	0.007	0.063	0.089	0.056	0.096	8.78%	17.57%	26.35%	0.072	0.080
K, wt.%	0.399	0.018	0.363	0.436	0.344	0.455	4.60%	9.20%	13.80%	0.379	0.419
La, ppm	5.01	0.471	4.07	5.96	3.60	6.43	9.40%	18.80%	28.20%	4.76	5.26
Li, ppm	10.7	0.73	9.3	12.2	8.5	12.9	6.78%	13.55%	20.33%	10.2	11.2
Lu, ppm	0.38	0.032	0.31	0.44	0.28	0.48	8.50%	16.99%	25.49%	0.36	0.40
Mg, wt.%	3.72	0.141	3.44	4.01	3.30	4.15	3.80%	7.60%	11.40%	3.54	3.91
Mn, wt.%	0.139	0.008	0.123	0.155	0.115	0.163	5.68%	11.36%	17.03%	0.132	0.146
Mo, ppm	1.15	0.20	0.76	1.54	0.56	1.74	17.03%	34.06%	51.09%	1.09	1.21
Na, wt.%	2.05	0.082	1.88	2.21	1.80	2.29	3.99%	7.98%	11.97%	1.94	2.15
Nb, ppm	3.58	0.291	3.00	4.16	2.71	4.45	8.12%	16.25%	24.37%	3.40	3.76
Nd, ppm	8.57	0.499	7.57	9.56	7.07	10.06	5.82%	11.65%	17.47%	8.14	9.00
Ni, ppm	75	4.0	67	83	63	87	5.34%	10.67%	16.01%	72	79
P, wt.%	0.043	0.003	0.038	0.049	0.035	0.051	6.16%	12.33%	18.49%	0.041	0.045
Pb, ppm	17.1	1.18	14.8	19.5	13.6	20.7	6.88%	13.75%	20.63%	16.3	18.0
Pr, ppm	1.80	0.124	1.55	2.05	1.43	2.17	6.91%	13.81%	20.72%	1.71	1.89
Rb, ppm	9.63	0.754	8.12	11.14	7.37	11.89	7.84%	15.67%	23.51%	9.15	10.11
S, wt.%	0.308	0.011	0.286	0.330	0.275	0.341	3.56%	7.12%	10.68%	0.293	0.323
Sb, ppm	1.10	0.15	0.81	1.40	0.66	1.54	13.25%	26.49%	39.74%	1.05	1.16
Sc, ppm	40.8	1.67	37.4	44.1	35.7	45.8	4.10%	8.20%	12.30%	38.7	42.8
Se, ppm	1.00	0.22	0.56	1.43	0.34	1.65	22.07%	44.13%	66.20%	0.95	1.05
Sm, ppm	2.63	0.159	2.32	2.95	2.16	3.11	6.05%	12.10%	18.15%	2.50	2.77
Sn, ppm	1.00	0.19	0.63	1.37	0.44	1.56	18.70%	37.39%	56.09%	0.95	1.05
Sr, ppm	127	7	112	141	105	148	5.67%	11.33%	17.00%	120	133
Ta, ppm	0.24	0.03	0.18	0.29	0.16	0.31	10.85%	21.71%	32.56%	0.22	0.25
Tb, ppm	0.63	0.042	0.55	0.71	0.50	0.75	6.63%	13.26%	19.88%	0.60	0.66

SI unit equivalents: ppm (parts per million)  $\equiv$  mg/kg  $\equiv$   $\mu$ g/g  $\equiv$  0.0001 wt.%  $\equiv$  1000 ppb (parts per billion).

Note 1: intervals may appear asymmetric due to rounding; IND = indeterminate.

Note 2: the number of decimal places quoted does not imply accuracy of the certified value to this level but are given to minimise rounding errors when calculating 2SD and 3SD windows.

**Table 1 continued.**

Constituent	Certified Value	Absolute Standard Deviations					Relative Standard Deviations			5% window	
		1SD	2SD Low	2SD High	3SD Low	3SD High	1RSD	2RSD	3RSD	Low	High
<b>4-Acid Digestion continued</b>											
Te, ppm	0.082	0.016	0.051	0.113	0.035	0.129	19.13%	38.26%	57.38%	0.078	0.086
Th, ppm	0.78	0.10	0.58	0.99	0.48	1.09	13.09%	26.18%	39.27%	0.75	0.82
Ti, wt.%	0.653	0.031	0.592	0.714	0.562	0.745	4.67%	9.34%	14.01%	0.621	0.686
Tl, ppm	0.15	0.011	0.13	0.17	0.12	0.18	6.96%	13.93%	20.89%	0.15	0.16
Tm, ppm	0.37	0.022	0.32	0.41	0.30	0.43	5.99%	11.98%	17.97%	0.35	0.38
U, ppm	0.24	0.04	0.16	0.33	0.12	0.37	17.34%	34.68%	52.02%	0.23	0.26
V, ppm	291	21	250	333	229	354	7.10%	14.21%	21.31%	277	306
W, ppm	19.3	1.10	17.1	21.5	16.0	22.6	5.70%	11.39%	17.09%	18.3	20.2
Y, ppm	21.7	0.92	19.8	23.5	18.9	24.4	4.22%	8.45%	12.67%	20.6	22.8
Yb, ppm	2.36	0.169	2.03	2.70	1.86	2.87	7.16%	14.32%	21.48%	2.25	2.48
Zn, ppm	120	8	104	135	96	143	6.51%	13.02%	19.52%	114	126
Zr, ppm	51	3.5	44	58	41	62	6.78%	13.56%	20.34%	49	54
<b>Aqua Regia Digestion</b>											
Ag, ppm	0.205	0.015	0.175	0.234	0.160	0.249	7.28%	14.55%	21.83%	0.194	0.215
Al, wt.%	3.34	0.217	2.91	3.77	2.69	3.99	6.49%	12.99%	19.48%	3.17	3.51
As, ppm	39.7	1.93	35.9	43.6	34.0	45.5	4.84%	9.69%	14.53%	37.8	41.7
B, ppm	70	5.6	59	82	54	87	7.99%	15.97%	23.96%	67	74
Ba, ppm	25.6	2.12	21.3	29.8	19.2	31.9	8.28%	16.55%	24.83%	24.3	26.8
Be, ppm	0.23	0.02	0.18	0.28	0.16	0.30	10.52%	21.04%	31.55%	0.22	0.24
Bi, ppm	0.040	0.005	0.031	0.050	0.026	0.055	11.96%	23.92%	35.87%	0.038	0.042
Ca, wt.%	2.64	0.32	2.01	3.28	1.69	3.59	12.04%	24.07%	36.11%	2.51	2.77
Cd, ppm	0.40	0.028	0.35	0.46	0.32	0.49	6.87%	13.74%	20.61%	0.38	0.42
Ce, ppm	8.72	0.427	7.87	9.58	7.44	10.00	4.90%	9.80%	14.70%	8.29	9.16
Co, ppm	31.3	2.37	26.5	36.0	24.1	38.4	7.60%	15.19%	22.79%	29.7	32.8
Cr, ppm	23.1	1.60	19.9	26.3	18.3	27.9	6.95%	13.90%	20.85%	21.9	24.2
Cs, ppm	0.50	0.026	0.44	0.55	0.42	0.57	5.31%	10.61%	15.92%	0.47	0.52
Cu, ppm	162	5	153	172	148	177	3.06%	6.13%	9.19%	154	171
Dy, ppm	2.43	0.208	2.01	2.85	1.80	3.05	8.57%	17.14%	25.71%	2.31	2.55
Er, ppm	1.46	0.16	1.14	1.78	0.98	1.94	10.99%	21.98%	32.97%	1.39	1.53
Eu, ppm	0.51	0.08	0.34	0.67	0.26	0.76	16.37%	32.74%	49.11%	0.48	0.53
Fe, wt.%	5.87	0.322	5.22	6.51	4.90	6.83	5.48%	10.97%	16.45%	5.57	6.16
Ga, ppm	11.5	0.83	9.8	13.1	9.0	13.9	7.21%	14.41%	21.62%	10.9	12.0
Gd, ppm	2.11	0.124	1.86	2.36	1.74	2.48	5.89%	11.78%	17.67%	2.01	2.22
Ge, ppm	0.14	0.03	0.09	0.19	0.07	0.22	18.05%	36.09%	54.14%	0.13	0.15
Hf, ppm	0.52	0.09	0.34	0.70	0.24	0.79	17.60%	35.21%	52.81%	0.49	0.55
Hg, ppm	0.040	0.007	0.025	0.054	0.017	0.062	18.77%	37.54%	56.31%	0.038	0.042
Ho, ppm	0.50	0.06	0.39	0.62	0.33	0.68	11.75%	23.50%	35.25%	0.48	0.53
In, ppm	0.031	0.003	0.025	0.037	0.022	0.040	9.71%	19.42%	29.13%	0.030	0.033
K, wt.%	0.095	0.009	0.077	0.113	0.068	0.122	9.55%	19.11%	28.66%	0.090	0.100
La, ppm	3.70	0.208	3.28	4.11	3.07	4.32	5.61%	11.23%	16.84%	3.51	3.88

SI unit equivalents: ppm (parts per million)  $\equiv$  mg/kg  $\equiv$   $\mu$ g/g  $\equiv$  0.0001 wt.%  $\equiv$  1000 ppb (parts per billion).

Note 1: intervals may appear asymmetric due to rounding.

Note 2: the number of decimal places quoted does not imply accuracy of the certified value to this level but are given to minimise rounding errors when calculating 2SD and 3SD windows.

**Table 1 continued.**

Constituent	Certified Value	Absolute Standard Deviations					Relative Standard Deviations			5% window	
		1SD	2SD Low	2SD High	3SD Low	3SD High	1RSD	2RSD	3RSD	Low	High
<b>Aqua Regia Digestion continued</b>											
Li, ppm	9.42	0.680	8.06	10.78	7.38	11.46	7.22%	14.44%	21.66%	8.95	9.89
Lu, ppm	0.18	0.02	0.13	0.22	0.11	0.25	12.94%	25.87%	38.81%	0.17	0.19
Mg, wt.%	1.75	0.065	1.62	1.88	1.56	1.94	3.69%	7.38%	11.07%	1.66	1.84
Mn, wt.%	0.073	0.004	0.065	0.082	0.061	0.086	5.67%	11.33%	17.00%	0.070	0.077
Mo, ppm	1.07	0.068	0.93	1.21	0.87	1.28	6.39%	12.78%	19.17%	1.02	1.12
Na, wt.%	0.181	0.009	0.163	0.199	0.154	0.208	4.91%	9.82%	14.74%	0.172	0.190
Nb, ppm	0.15	0.05	0.06	0.24	0.01	0.29	30.55%	61.09%	91.64%	0.14	0.16
Nd, ppm	6.03	0.303	5.42	6.63	5.12	6.94	5.02%	10.04%	15.07%	5.73	6.33
Ni, ppm	49.1	3.67	41.8	56.5	38.1	60.1	7.46%	14.92%	22.38%	46.7	51.6
P, wt.%	0.043	0.002	0.040	0.046	0.038	0.048	3.83%	7.66%	11.50%	0.041	0.045
Pb, ppm	17.0	0.85	15.3	18.7	14.5	19.6	5.02%	10.03%	15.05%	16.2	17.9
Pr, ppm	1.22	0.078	1.06	1.37	0.98	1.45	6.41%	12.81%	19.22%	1.16	1.28
Rb, ppm	3.83	0.147	3.54	4.13	3.39	4.27	3.84%	7.69%	11.53%	3.64	4.02
Re, ppm	0.002	0.000	0.001	0.003	0.000	0.003	26.03%	52.07%	78.10%	0.002	0.002
S, wt.%	0.309	0.017	0.274	0.344	0.257	0.361	5.62%	11.23%	16.85%	0.294	0.324
Sb, ppm	0.56	0.18	0.19	0.92	0.01	1.11	32.93%	65.87%	98.80%	0.53	0.58
Sc, ppm	5.76	0.83	4.11	7.42	3.28	8.24	14.36%	28.71%	43.07%	5.47	6.05
Se, ppm	0.62	0.15	0.31	0.93	0.16	1.08	24.73%	49.46%	74.19%	0.59	0.65
Sm, ppm	1.75	0.147	1.45	2.04	1.31	2.19	8.40%	16.80%	25.20%	1.66	1.83
Sn, ppm	0.58	0.06	0.46	0.70	0.40	0.76	10.19%	20.38%	30.57%	0.55	0.61
Sr, ppm	27.6	4.0	19.6	35.7	15.5	39.7	14.57%	29.14%	43.71%	26.2	29.0
Ta, ppm	< 0.01	IND	IND	IND	IND	IND	IND	IND	IND	IND	IND
Tb, ppm	0.37	0.021	0.33	0.41	0.31	0.43	5.54%	11.08%	16.62%	0.35	0.39
Te, ppm	0.072	0.008	0.056	0.089	0.048	0.097	11.36%	22.72%	34.08%	0.069	0.076
Th, ppm	0.59	0.052	0.49	0.70	0.44	0.75	8.70%	17.40%	26.10%	0.57	0.62
Ti, wt.%	0.379	0.072	0.235	0.524	0.163	0.596	19.03%	38.06%	57.09%	0.360	0.398
Tl, ppm	0.077	0.006	0.064	0.090	0.058	0.097	8.29%	16.57%	24.86%	0.073	0.081
Tm, ppm	0.19	0.02	0.15	0.23	0.13	0.25	11.24%	22.47%	33.71%	0.18	0.20
U, ppm	0.16	0.010	0.14	0.18	0.13	0.19	6.41%	12.81%	19.22%	0.16	0.17
V, ppm	154	16	122	186	105	202	10.49%	20.97%	31.46%	146	161
W, ppm	13.8	2.0	9.8	17.8	7.8	19.9	14.61%	29.23%	43.84%	13.1	14.5
Y, ppm	12.5	0.76	11.0	14.0	10.2	14.8	6.07%	12.14%	18.22%	11.9	13.1
Yb, ppm	1.18	0.12	0.94	1.42	0.82	1.54	10.28%	20.57%	30.85%	1.12	1.24
Zn, ppm	108	6	96	121	89	127	5.86%	11.72%	17.58%	103	114
Zr, ppm	16.6	3.1	10.4	22.8	7.3	25.9	18.60%	37.20%	55.80%	15.8	17.4

SI unit equivalents: ppm (parts per million)  $\equiv$  mg/kg  $\equiv$   $\mu$ g/g  $\equiv$  0.0001 wt.%  $\equiv$  1000 ppb (parts per billion).

Note 1: intervals may appear asymmetric due to rounding.

Note 2: the number of decimal places quoted does not imply accuracy of the certified value to this level but are given to minimise rounding errors when calculating 2SD and 3SD windows.

## TABLE OF CONTENTS

INTRODUCTION .....	6
SOURCE MATERIAL.....	7
PERFORMANCE GATES .....	7
COMMUNITION AND HOMOGENISATION PROCEDURES .....	8
PHYSICAL PROPERTIES .....	8
ANALYTICAL PROGRAM.....	8
STATISTICAL ANALYSIS.....	9
Homogeneity Evaluation .....	10
PREPARER AND SUPPLIER.....	16
PARTICIPATING LABORATORIES.....	17
METROLOGICAL TRACEABILITY .....	22
COMMUTABILITY .....	22
INTENDED USE .....	22
STABILITY AND STORAGE INSTRUCTIONS .....	23
INSTRUCTIONS FOR CORRECT USE.....	23
HANDLING INSTRUCTIONS.....	24
LEGAL NOTICE .....	25
DOCUMENT HISTORY .....	25
CERTIFYING OFFICER.....	25
QMS CERTIFICATION .....	25
REFERENCES .....	25

## LIST OF TABLES

Table 1. Certified Values and Performance Gates for OREAS 211.....	1
Table 2. Indicative Values for OREAS 211.....	6
Table 3. Physical properties of OREAS 211.....	8
Table 4. 95% Confidence & Tolerance Limits for OREAS 211.....	11
Table 5. Neutron Activation Analysis of Au (in ppm) on 20 x 1g subsamples.....	15

## LIST OF FIGURES

Figure 1. Au by Fire Assay in OREAS 211 .....	18
Figure 2. Au by aqua regia digestion in OREAS 211 .....	19
Figure 3. Au by cyanide leach in OREAS 211 .....	20
Figure 4. Au by photon assay in OREAS 211 .....	21

**Table 2. Indicative Values for OREAS 211.**

Constituent	Unit	Value	Constituent	Unit	Value	Constituent	Unit	Value
<b>4-Acid Digestion</b>								
Ge	ppm	0.20	Hg	ppm	< 2	Re	ppm	0.002
<b>Aqua Regia Digestion</b>								
Pd	ppb	10.5	Pt	ppb	12.7			
<b>Borate Fusion XRF</b>								
Al <sub>2</sub> O <sub>3</sub>	wt.%	13.14	Fe <sub>2</sub> O <sub>3</sub>	wt.%	12.10	S	wt.%	0.294
As	ppm	40.0	K <sub>2</sub> O	wt.%	0.473	SiO <sub>2</sub>	wt.%	50.76
BaO	ppm	225	MgO	wt.%	6.41	Sn	ppm	< 10
CaO	wt.%	9.62	MnO	wt.%	0.185	Sr	ppm	169
Cl	ppm	1440	Na <sub>2</sub> O	wt.%	2.72	TiO <sub>2</sub>	wt.%	1.12
Co	ppm	55	Ni	ppm	80	V <sub>2</sub> O <sub>5</sub>	ppm	575
Cr <sub>2</sub> O <sub>3</sub>	ppm	175	P <sub>2</sub> O <sub>5</sub>	wt.%	0.107	Zn	ppm	140
Cu	ppm	185	Pb	ppm	20.0	Zr	ppm	74
<b>Thermogravimetry</b>								
LOI <sup>1000</sup>	wt.%	3.20						
<b>Infrared Combustion</b>								
C	wt.%	0.135	S	wt.%	0.270			
<b>Laser Ablation ICP-MS</b>								
Ag	ppm	0.200	Hf	ppm	2.05	Sm	ppm	2.76
As	ppm	40.0	Ho	ppm	0.91	Sn	ppm	1.10
Ba	ppm	193	In	ppm	0.075	Sr	ppm	126
Be	ppm	0.40	La	ppm	5.16	Ta	ppm	0.25
Bi	ppm	0.040	Lu	ppm	0.38	Tb	ppm	0.64
Cd	ppm	0.45	Mn	wt.%	0.146	Te	ppm	< 0.2
Ce	ppm	12.0	Mo	ppm	1.20	Th	ppm	0.81
Co	ppm	47.0	Nb	ppm	3.70	Ti	wt.%	0.670
Cr	ppm	122	Nd	ppm	9.06	Tl	ppm	< 0.2
Cs	ppm	0.69	Ni	ppm	81	Tm	ppm	0.39
Cu	ppm	167	Pb	ppm	18.0	U	ppm	0.27
Dy	ppm	4.13	Pr	ppm	1.85	V	ppm	318
Er	ppm	2.71	Rb	ppm	9.60	W	ppm	20.5
Eu	ppm	0.97	Re	ppm	< 0.01	Y	ppm	23.1
Ga	ppm	16.0	Sb	ppm	1.20	Yb	ppm	2.56
Gd	ppm	3.60	Sc	ppm	41.9	Zn	ppm	125
Ge	ppm	1.40	Se	ppm	< 5	Zr	ppm	68

SI unit equivalents: ppm (parts per million) ≡ mg/kg ≡ µg/g ≡ 0.0001 wt.% ≡ 1000 ppb (parts per billion).

Note: the number of significant figures reported is not a reflection of the level of certainty of stated values. They are instead an artefact of ORE's in-house CRM-specific LIMS.

## INTRODUCTION

OREAS reference materials are intended to provide a low-cost method of evaluating and improving the quality of analysis of geological samples. To the geologist they provide a means of implementing quality control in analytical data sets generated in exploration from the grass roots level through to prospect evaluation, and in grade control at mining operations. To the analyst they provide an effective means of calibrating analytical equipment, assessing new techniques and routinely monitoring in-house procedures.

OREAS reference materials enable users to successfully achieve process control of these tasks because the observed variance from repeated analysis has its origin almost exclusively in the analytical process rather than the reference material itself. In evaluating laboratory performance with this CRM, the section headed 'Instructions for correct use' should be read carefully.

Table 1 provides performance gate intervals for the certified values based on their pooled 1SD's. Table 2 shows indicative values including major and trace element characterisation by Bureau Veritas in Perth, Western Australia which includes:

- Major oxides by lithium borate fusion with X-ray fluorescence;
- LOI at 1000°C by thermogravimetric analyser;
- Total Carbon and Sulphur by infrared combustion furnace;
- Trace elements by laser ablation (on the fused bead) with ICP-MS finish.

Table 3 provides some indicative physical properties and Table 4 presents the 95% confidence and tolerance limits for all certified values. Gold homogeneity (via INAA) is shown in Table 5 and is also demonstrated by a nested ANOVA program using fire assay (see '**nested ANOVA**' section).

Tabulated results of all elements (including Au INAA analyses) together with uncorrected means, medians, standard deviations, relative standard deviations and percent deviation of lab means from the corrected mean of means (PDM<sup>3</sup>) are presented in the detailed certification data for this CRM (**OREAS 211-DataPack.1.1.211029\_173227.xlsx**).

Results are also presented in scatter plots for gold by fire assay, aqua regia digestion, cyanide leach and photon assay (Figures 1 to 4, respectively) together with  $\pm 3SD$  (magenta) and  $\pm 5\%$  (yellow) control lines and certified value (green line). Accepted individual results are coloured blue and individual and dataset outliers are identified in red and violet, respectively.

## SOURCE MATERIAL

OREAS 211 was prepared from a blend of gold ore and barren greenstone. The ore was sourced from the Frogs Leg Gold Mine located 19km west of Kalgoorlie in Western Australia. The Cambrian greenstone was sourced from a quarry 145km north of Melbourne, Australia.

## PERFORMANCE GATES

Table 1 above shows intervals calculated for two and three standard deviations. As a guide these intervals may be regarded as warning or rejection for multiple 2SD outliers, or rejection for individual 3SD outliers in QC monitoring, although their precise application should be at the discretion of the QC manager concerned (also see 'Intended Use' section below). Westgard Rules extend the basics of single-rule QC monitoring using multi-rules (for more information visit [www.westgard.com/mltirule.htm](http://www.westgard.com/mltirule.htm)). A second method utilises a 5% window calculated directly from the certified value.

Standard deviation is also shown in relative percent for one, two and three relative standard deviations (1RSD, 2RSD and 3RSD) to facilitate an appreciation of the magnitude of these numbers and a comparison with the 5% window. Caution should be exercised when concentration levels approach lower limits of detection of the analytical methods employed as performance gates calculated from standard deviations tend to be excessively wide whereas those determined by the 5% method are too narrow. One approach used at commercial laboratories is to set the acceptance criteria at twice the detection level (DL)  $\pm$  10%.

*i.e., Certified Value  $\pm$  10%  $\pm$  2DL (adapted from Govett, 1983).*

## COMMINUTION AND HOMOGENISATION PROCEDURES

The material constituting OREAS 211 was prepared in the following manner:

- Drying the gold ore and greenstone to constant mass at 105°C;
- Crushing and multi stage milling of gold ore to 100% minus 30 microns;
- Crushing and multi stage milling of greenstone to >98% minus 75 microns;
- Final homogenisation;
- Packaging in 1kg units in plastic jars.

## PHYSICAL PROPERTIES

OREAS 211 was tested at ORE Research & Exploration Pty Ltd's onsite facility for various physical properties. Table 3 presents these findings that should be used for informational purposes only.

**Table 3. Physical properties of OREAS 211.**

Bulk Density (g/L)	Moisture%	Munsell Notation <sup>‡</sup>	Munsell Color <sup>‡</sup>
974	0.63	5GY 6/1	Greenish Gray

<sup>‡</sup>The Munsell Rock Color Chart helps geologists and archeologists communicate with colour more effectively by cross-referencing ISCC-NBS colour names with unique Munsell alpha-numeric colour notations for rock colour samples.

## ANALYTICAL PROGRAM

Thirty-one commercial analytical laboratories participated in the program to certify the elements reported in Table 1. The following methods were employed:

- Gold by fire assay (25-50g charge weight) with AAS (21 laboratories) and ICP-OES (5 laboratories) finish;
- Gold by aqua regia digestion (15-50g sample weight) with ICP-OES and/or ICP-MS (22 laboratories) finish;
- Gold by cyanide leach; a variety of cyanide leach methods were undertaken by the participating laboratories including the use of LeachWELL tablets, alkaline added sodium cyanide solution as well as sodium cyanide liquor with LeachWELL powder. The sample weights included: 20g (1 laboratory by AAS finish), 30g (4 laboratories by AAS finish), 50g (3 laboratories by ICP-MS finish and 1 laboratory by AAS



finish), 60g (1 laboratory by ICP-MS finish) and 200g (5 laboratories by AAS and 1 laboratory by ICP-MS finish).

- Gold by x-ray photon assay on ~350g sample weights (6 Chrysos PhotonAssay units at 4 installations with two rounds of data reported from each unit);
- Full ICP-OES and ICP-MS elemental suites by 4-acid ( $\text{HNO}_3\text{-HF-HClO}_4\text{-HCl}$ ) digestion (up to 23 laboratories depending on the element);
- Full ICP-OES and ICP-MS elemental suites by aqua regia digestion (up to 24 laboratories depending on the element).

To confirm homogeneity, gold by instrumental neutron activation analysis (INAA) was undertaken on 20 x 1g subsamples by the Actlabs Ancaster, Ontario, Canada (see Table 5 in the 'Homogeneity Evaluation' section below).

For the round robin program twenty 3kg test units were taken at predetermined intervals during the bagging stage, immediately following homogenisation and are considered representative of the entire prepared batch. Six pulp samples were submitted to each laboratory for analysis (the weight provided depended on whether the laboratory was anticipated to undertake assays by gold cyanide leach). The samples received by each laboratory were obtained by taking two samples from each of three separate 3kg test units. This format enabled a nested ANOVA treatment of the results to evaluate homogeneity, i.e., to ascertain whether between-unit variance is greater than within-unit variance.

## STATISTICAL ANALYSIS

**Standard Deviation** intervals (see Table 1) provide an indication of a level of performance that might reasonably be expected from a laboratory being monitored by this CRM in a QA/QC program. They take into account errors attributable to measurement uncertainty and CRM variability. For an effective CRM the contribution of the latter should be negligible in comparison to measurement errors. The Standard Deviation values include all sources of measurement uncertainty: between-lab variance, within-run variance (precision errors) and CRM variability.

In the application of SD's in monitoring performance it is important to note that not all laboratories function at the same level of proficiency and that different methods in use at a particular laboratory have differing levels of precision. Each laboratory has its own inherent SD (for a specific concentration level and analyte-method pair) based on the analytical process and this SD is not directly related to the round robin program (see 'Instructions for correct use' section for more detail).

The SD for each analyte's certified value is calculated from the same filtered data set used to determine the certified value, i.e., after removal of all individual, lab dataset (batch) and 3SD outliers (single iteration). These outliers can only be removed after the absolute homogeneity of the CRM has been independently established, i.e., the outliers must be confidently deemed to be analytical rather than arising from inhomogeneity of the CRM. ***The standard deviation is then calculated for each analyte from the pooled accepted analyses generated from the certification program.***

**Certified Values, Standard Deviations, Confidence Limits and Tolerance Limits** (Table 4) have been determined for each analyte following removal of individual, laboratory dataset (batch) and 3SD outliers (single iteration).

For individual outliers within a laboratory batch the z-score test is used in combination with a second method that determines the per cent deviation of the individual value from the batch median. Outliers in general are selected on the basis of z-scores  $> 2.5$  and with per cent deviations (i)  $> 3$  and (ii) more than three times the average absolute per cent deviation for the batch. In certain instances, statistician's prerogative has been employed in discriminating outliers.

Each laboratory data set mean is tested for outlying status based on z-score discrimination and rejected if  $> 2.5$ . After individual and laboratory data set (batch) outliers have been eliminated a non-iterative 3 standard deviation filter is applied, with those values lying outside this window also relegated to outlying status.

**Certified Values** are the means of accepted laboratory means after outlier filtering. The INAA data (see Table 5) is omitted from determination of the certified value for Au and is used solely for the calculation of Tolerance Limits and homogeneity evaluation of OREAS 211 (see 'Homogeneity Evaluation' section below).

**95% Confidence Limits** are inversely proportional to the number of participating laboratories and inter-laboratory agreement. It is a measure of the reliability of the certified value. A 95% confidence interval indicates a 95% probability that the true value of the analyte under consideration lies between the upper and lower limits. **95% Confidence Limits should not be used as control limits for laboratory performance.**

**Indicative (uncertified) values** (Table 2) are present where the number of laboratories reporting a particular analyte is insufficient ( $< 5$ ) to support certification or where inter-laboratory consensus is poor.

### **Homogeneity Evaluation**

For analytes other than gold, the tolerance limits (ISO 16269:2014) shown in Table 4 were determined using an analysis of precision errors method and are considered a conservative estimate of true homogeneity. The meaning of tolerance limits may be illustrated for copper by 4-acid digestion, where 99% of the time ( $1-\alpha=0.99$ ) at least 95% of subsamples ( $p=0.95$ ) will have concentrations lying between 161 and 166 ppm. Put more precisely, this means that if the same number of subsamples were taken and analysed in the same manner repeatedly, 99% of the tolerance intervals so constructed would cover at least 95% of the total population, and 1% of the tolerance intervals would cover less than 95% of the total population (ISO Guide 35).

***Please note that tolerance limits pertain to the homogeneity of the CRM only and should not be used as control limits for laboratory performance.***

**Table 4. 95% Confidence & Tolerance Limits for OREAS 211.**

Constituent	Certified	95% Confidence Limits		95% Tolerance Limits	
	Value	Low	High	Value	Low
<b>Pb Fire Assay</b>					
Au, Gold (ppm)	0.768	0.758	0.777	0.754*	0.782*
<b>Aqua Regia Digestion (sample weights 10-50g)</b>					
Au, Gold (ppm)	0.730	0.715	0.745	0.716*	0.745*
<b>Cyanide Leach</b>					
Au, Gold (ppm)	0.749	0.731	0.767	0.744*	0.754*
<b>X-ray Photon Assay</b>					
Au, Gold (ppm)	0.729	0.711	0.747	0.672	0.786
<b>4-Acid Digestion</b>					
Ag, Silver (ppm)	0.214	0.204	0.223	0.203	0.224
Al, Aluminium (wt.%)	6.85	6.78	6.93	6.73	6.97
As, Arsenic (ppm)	41.8	40.5	43.2	40.4	43.3
Ba, Barium (ppm)	186	182	189	182	190
Be, Beryllium (ppm)	0.41	0.39	0.43	0.37	0.44
Bi, Bismuth (ppm)	0.046	0.040	0.051	IND	IND
Ca, Calcium (wt.%)	6.61	6.48	6.75	6.50	6.72
Cd, Cadmium (ppm)	0.42	0.41	0.43	0.40	0.44
Ce, Cerium (ppm)	12.3	11.7	13.0	12.0	12.6
Co, Cobalt (ppm)	43.8	42.7	44.9	43.0	44.6
Cr, Chromium (ppm)	95	92	98	92	97
Cs, Caesium (ppm)	0.69	0.65	0.73	0.66	0.72
Cu, Copper (ppm)	164	161	166	161	166
Dy, Dysprosium (ppm)	4.05	3.88	4.22	3.90	4.20
Er, Erbium (ppm)	2.50	2.38	2.62	2.41	2.59
Eu, Europium (ppm)	0.98	0.95	1.01	0.94	1.01
Fe, Iron (wt.%)	8.14	8.03	8.26	8.00	8.29
Ga, Gallium (ppm)	15.8	15.4	16.3	15.5	16.2
Gd, Gadolinium (ppm)	3.50	3.32	3.69	3.38	3.62
Hf, Hafnium (ppm)	1.70	1.65	1.75	1.58	1.82
Ho, Holmium (ppm)	0.85	0.82	0.89	0.83	0.88
In, Indium (ppm)	0.076	0.073	0.079	0.070	0.082
K, Potassium (wt.%)	0.399	0.391	0.408	0.392	0.407
La, Lanthanum (ppm)	5.01	4.79	5.23	4.86	5.17
Li, Lithium (ppm)	10.7	10.4	11.1	10.4	11.0
Lu, Lutetium (ppm)	0.38	0.35	0.40	0.35	0.40
Mg, Magnesium (wt.%)	3.72	3.66	3.79	3.66	3.78
Mn, Manganese (wt.%)	0.139	0.135	0.143	0.137	0.141

SI unit equivalents: ppm (parts per million)  $\equiv$  mg/kg  $\equiv$   $\mu$ g/g  $\equiv$  0.0001 wt.%  $\equiv$  1000 ppb (parts per billion).

\*Gold Tolerance Limits for typical 30g fire assay, 25g aqua regia digestion and 200g cyanide leach methods are determined from 20 x 85mg INAA results and the Sampling Constant (Ingamells & Switzer, 1973).

Note: intervals may appear asymmetric due to rounding.

Table 4 continued.

Constituent	Certified	95% Confidence Limits		95% Tolerance Limits	
	Value	Low	High	Value	Low
<b>4-Acid Digestion continued</b>					
Mo, Molybdenum (ppm)	1.15	1.06	1.25	1.07	1.23
Na, Sodium (wt.%)	2.05	2.01	2.08	2.01	2.08
Nb, Niobium (ppm)	3.58	3.42	3.73	3.44	3.71
Nd, Neodymium (ppm)	8.57	8.23	8.91	8.29	8.85
Ni, Nickel (ppm)	75	74	77	74	77
P, Phosphorus (wt.%)	0.043	0.042	0.044	0.042	0.044
Pb, Lead (ppm)	17.1	16.5	17.8	16.6	17.6
Pr, Praseodymium (ppm)	1.80	1.70	1.89	1.74	1.86
Rb, Rubidium (ppm)	9.63	9.28	9.98	9.34	9.92
S, Sulphur (wt.%)	0.308	0.303	0.313	0.300	0.316
Sb, Antimony (ppm)	1.10	1.03	1.17	1.03	1.17
Sc, Scandium (ppm)	40.8	40.0	41.6	39.8	41.7
Se, Selenium (ppm)	1.00	0.90	1.09	IND	IND
Sm, Samarium (ppm)	2.63	2.53	2.74	2.48	2.79
Sn, Tin (ppm)	1.00	0.89	1.11	IND	IND
Sr, Strontium (ppm)	127	124	130	124	130
Ta, Tantalum (ppm)	0.24	0.22	0.25	0.22	0.25
Tb, Terbium (ppm)	0.63	0.59	0.66	0.60	0.66
Te, Tellurium (ppm)	0.082	0.071	0.093	IND	IND
Th, Thorium (ppm)	0.78	0.73	0.83	0.76	0.81
Ti, Titanium (wt.%)	0.653	0.639	0.668	0.635	0.672
Tl, Thallium (ppm)	0.15	0.15	0.16	IND	IND
Tm, Thulium (ppm)	0.37	0.35	0.38	0.33	0.40
U, Uranium (ppm)	0.24	0.22	0.26	0.23	0.26
V, Vanadium (ppm)	291	282	301	284	299
W, Tungsten (ppm)	19.3	18.7	19.8	18.8	19.7
Y, Yttrium (ppm)	21.7	21.3	22.1	21.2	22.2
Yb, Ytterbium (ppm)	2.36	2.24	2.49	2.27	2.46
Zn, Zinc (ppm)	120	116	123	117	122
Zr, Zirconium (ppm)	51	50	53	49	53
<b>Aqua Regia Digestion</b>					
Ag, Silver (ppm)	0.205	0.198	0.211	0.195	0.214
Al, Aluminium (wt.%)	3.34	3.25	3.43	3.27	3.41
As, Arsenic (ppm)	39.7	38.9	40.6	38.8	40.7
B, Boron (ppm)	70	65	76	69	72
Ba, Barium (ppm)	25.6	24.5	26.6	24.7	26.5
Be, Beryllium (ppm)	0.23	0.21	0.24	0.20	0.26
Bi, Bismuth (ppm)	0.040	0.038	0.043	IND	IND

SI unit equivalents: ppm (parts per million)  $\equiv$  mg/kg  $\equiv$   $\mu$ g/g  $\equiv$  0.0001 wt.%  $\equiv$  1000 ppb (parts per billion).

Note: intervals may appear asymmetric due to rounding.

Table 4 continued.

Constituent	Certified	95% Confidence Limits		95% Tolerance Limits	
	Value	Low	High	Value	Low
<b>Aqua Regia Digestion continued</b>					
Ca, Calcium (wt.%)	2.64	2.51	2.77	2.56	2.72
Cd, Cadmium (ppm)	0.40	0.39	0.42	0.38	0.43
Ce, Cerium (ppm)	8.72	8.49	8.95	8.46	8.98
Co, Cobalt (ppm)	31.3	30.2	32.3	30.2	32.3
Cr, Chromium (ppm)	23.1	22.4	23.8	22.4	23.7
Cs, Caesium (ppm)	0.50	0.48	0.51	0.48	0.51
Cu, Copper (ppm)	162	160	165	159	166
Dy, Dysprosium (ppm)	2.43	2.17	2.69	2.31	2.55
Er, Erbium (ppm)	1.46	1.26	1.66	1.37	1.55
Eu, Europium (ppm)	0.51	0.40	0.62	0.46	0.55
Fe, Iron (wt.%)	5.87	5.73	6.00	5.77	5.96
Ga, Gallium (ppm)	11.5	11.1	11.9	11.2	11.7
Gd, Gadolinium (ppm)	2.11	1.96	2.26	2.01	2.21
Ge, Germanium (ppm)	0.14	0.11	0.17	IND	IND
Hf, Hafnium (ppm)	0.52	0.46	0.57	0.49	0.55
Hg, Mercury (ppm)	0.040	0.034	0.045	IND	IND
Ho, Holmium (ppm)	0.50	0.43	0.58	IND	IND
In, Indium (ppm)	0.031	0.030	0.032	0.027	0.036
K, Potassium (wt.%)	0.095	0.091	0.099	0.092	0.098
La, Lanthanum (ppm)	3.70	3.59	3.81	3.60	3.79
Li, Lithium (ppm)	9.42	9.06	9.77	9.14	9.70
Lu, Lutetium (ppm)	0.18	0.16	0.20	IND	IND
Mg, Magnesium (wt.%)	1.75	1.72	1.77	1.72	1.78
Mn, Manganese (wt.%)	0.073	0.072	0.075	0.073	0.074
Mo, Molybdenum (ppm)	1.07	1.04	1.10	1.03	1.12
Na, Sodium (wt.%)	0.181	0.177	0.185	0.176	0.186
Nb, Niobium (ppm)	0.15	0.12	0.19	IND	IND
Nd, Neodymium (ppm)	6.03	5.67	6.38	5.82	6.23
Ni, Nickel (ppm)	49.1	47.5	50.8	48.0	50.3
P, Phosphorus (wt.%)	0.043	0.042	0.044	0.042	0.044
Pb, Lead (ppm)	17.0	16.6	17.4	16.2	17.8
Pr, Praseodymium (ppm)	1.22	1.12	1.32	1.15	1.29
Rb, Rubidium (ppm)	3.83	3.75	3.91	3.72	3.94
Re, Rhenium (ppm)	0.002	0.002	0.002	IND	IND
S, Sulphur (wt.%)	0.309	0.301	0.317	0.300	0.318
Sb, Antimony (ppm)	0.56	0.46	0.65	0.51	0.60
Sc, Scandium (ppm)	5.76	5.32	6.20	5.51	6.02
Se, Selenium (ppm)	0.62	0.50	0.74	IND	IND

SI unit equivalents: ppm (parts per million)  $\equiv$  mg/kg  $\equiv$   $\mu$ g/g  $\equiv$  0.0001 wt.%  $\equiv$  1000 ppb (parts per billion).

Note: intervals may appear asymmetric due to rounding.

Table 4 continued.

Constituent	Certified	95% Confidence Limits		95% Tolerance Limits	
	Value	Low	High	Value	Low
<b>Aqua Regia Digestion continued</b>					
Sm, Samarium (ppm)	1.75	1.56	1.93	1.63	1.86
Sn, Tin (ppm)	0.58	0.55	0.61	IND	IND
Sr, Strontium (ppm)	27.6	25.9	29.4	26.6	28.6
Ta, Tantalum (ppm)	< 0.01	IND	IND	IND	IND
Tb, Terbium (ppm)	0.37	0.35	0.39	0.36	0.39
Te, Tellurium (ppm)	0.072	0.068	0.077	IND	IND
Th, Thorium (ppm)	0.59	0.57	0.62	0.56	0.63
Ti, Titanium (wt.%)	0.379	0.347	0.411	0.363	0.396
Tl, Thallium (ppm)	0.077	0.074	0.080	IND	IND
Tm, Thulium (ppm)	0.19	0.16	0.22	IND	IND
U, Uranium (ppm)	0.16	0.16	0.17	IND	IND
V, Vanadium (ppm)	154	147	161	149	158
W, Tungsten (ppm)	13.8	12.6	15.0	13.3	14.3
Y, Yttrium (ppm)	12.5	12.1	12.8	12.1	12.9
Yb, Ytterbium (ppm)	1.18	1.05	1.31	IND	IND
Zn, Zinc (ppm)	108	106	111	106	110
Zr, Zirconium (ppm)	16.6	15.0	18.2	15.7	17.6

SI unit equivalents: ppm (parts per million)  $\equiv$  mg/kg  $\equiv$   $\mu$ g/g  $\equiv$  0.0001 wt.%  $\equiv$  1000 ppb (parts per billion).  
 Note: intervals may appear asymmetric due to rounding.

**Table 5. Neutron Activation Analysis of Au (in ppm) on 20 x 1g subsamples and showing the equivalent results scaled to a 30g sample mass typical of fire assay determination.**

Replicate No	Au 1g actual	Au 30g equivalent*
1	0.792	0.760
2	0.754	0.753
3	0.751	0.752
4	0.740	0.750
5	0.755	0.753
6	0.709	0.744
7	0.740	0.750
8	0.762	0.754
9	0.725	0.747
10	0.742	0.750
11	0.731	0.748
12	0.734	0.749
13	0.796	0.761
14	0.766	0.755
15	0.784	0.758
16	0.753	0.752
17	0.752	0.752
18	0.779	0.757
19	0.745	0.751
20	0.737	0.749
Mean	0.752	0.752
Median	0.752	0.752
Std Dev.	0.022	0.004
<b>Rel.Std.Dev.</b>	<b>2.99%</b>	<b>0.56%</b>

\*Results calculated for a 30g equivalent sample mass using the formula:  $x^{30g Eq} = \frac{(x^{INAA} - \bar{X}) \times RSD@30g}{RSD@1g} + \bar{X}$   
 where  $x^{30g Eq}$  = equivalent result calculated for a 30g sample mass  
 $(x^{INAA})$  = raw INAA result at 1g  
 $\bar{X}$  = mean of 1g INAA results

Table 5 above shows the gold INAA data determined on 20 x 1g subsamples of OREAS 211. An equivalent scaled version of the results is also provided to demonstrate the level of repeatability that would be achieved if 30g fire assay determinations were undertaken without the normal measurement error associated with this methodology. The homogeneity of gold has been determined by INAA using the reduced analytical subsample method which utilises the known relationship between standard deviation and analytical subsample weight (Ingamells and Switzer, 1973). In this approach the sample aliquot is substantially reduced to a point where most of the variability in replicate assays should be due to inhomogeneity of the reference material (i.e., sampling error) and measurement error becomes negligible. In this instance a subsample weight of 1.0 grams was employed and the 1RSD of 0.56% was calculated for a 30g fire assay sample (2.99% at 1g weights) and confirms the high level of gold homogeneity in OREAS 211.

The homogeneity of OREAS 211 has also been evaluated in a **nested ANOVA** of the round robin program. Each of the forty-two round robin laboratories received six samples per CRM and these samples were made up of paired samples from three different, non-adjacent sampling intervals. The purpose of the ANOVA evaluation is to test that no

statistically significant difference exists in the variance between units to that of the variance within units. This allows an assessment of homogeneity across the entire prepared batch of OREAS 211. The test was performed using the following parameters:

- Gold fire assay – 156 samples (26 laboratories each providing analyses on 3 pairs of samples);
- Gold aqua regia digestion – 132 samples (22 laboratories each providing analyses on 3 pairs of samples);
- Gold cyanide leach – 108 samples (18 laboratories each providing analyses on 3 pairs of samples);
- Null Hypothesis,  $H_0$ : Between-unit variance is no greater than within-unit variance (reject  $H_0$  if  $p$ -value  $< 0.05$ );
- Alternative Hypothesis,  $H_1$ : Between-unit variance is greater than within-unit variance.

$P$ -values are a measure of probability where values less than 0.05 indicate a greater than 95% probability that the observed differences in within-unit and between-unit variances are real. The datasets were filtered for both individual and laboratory data set (batch) outliers prior to the calculation of the  $p$ -value.

This process derived  $p$ -values of 0.998 for Au by fire assay, 0.992 for Au by aqua regia digestion and 0.998 for Au by cyanide leach. All  $p$ -values are insignificant and the Null Hypothesis is retained. Additionally, none of the other certified values showed significant  $p$ -values.

Only results for constituents present in concentrations well above the detection levels (i.e.,  $>20 \times$  Lower Limit of Detection) for the various methods undertaken were considered for the objective of evaluating homogeneity. It is important to note that ANOVA is not an absolute measure of homogeneity. Rather, it establishes whether or not the analytes are distributed in a similar manner throughout the packaging run of OREAS 211 and whether the variance between two subsamples from the same unit is statistically distinguishable from the variance of two subsamples taken from any two separate units. A reference material therefore can possess poor absolute homogeneity yet still pass a relative homogeneity (ANOVA) test if the within-unit heterogeneity is large and similar across all units.

Based on the statistical analysis of the results of the inter-laboratory certification program it can be concluded that OREAS 211 is fit-for-purpose as a certified reference material (see 'Intended Use' below).

## PREPARER AND SUPPLIER

Certified reference material OREAS 211 was prepared, certified and supplied by:



ORE Research & Exploration Pty Ltd  
37A Hosie Street  
Bayswater North VIC 3153  
AUSTRALIA

Tel: +613-9729 0333  
Fax: +613-9729 8338  
Web: [www.oreas.com](http://www.oreas.com)  
Email: [info@ore.com.au](mailto:info@ore.com.au)



## PARTICIPATING LABORATORIES

1. Actlabs, Ancaster, Ontario, Canada
2. Alex Stewart International, Mendoza, Argentina
3. ALS, Lima, Peru
4. ALS, Loughrea, Galway, Ireland
5. ALS, Perth, WA, Australia
6. ALS, Vancouver, BC, Canada
7. Bureau Veritas Commodities Canada Ltd, Vancouver, BC, Canada
8. Bureau Veritas Geoanalytical, Perth, WA, Australia
9. CRS Laboratories Oy, Kempele, Northern Ostrobothnia, Finland
10. ESAN Istanbul, Istanbul, Turkey
11. Inspectorate (BV), Lima, Peru
12. Intertek Genalysis, Adelaide, SA, Australia
13. Intertek Genalysis, Perth, WA, Australia
14. Intertek Tarkwa, Tarkwa, Ghana
15. Intertek Testing Services Philippines, Cupang, Muntinlupa, Philippines
16. MinAnalytical Services, Kalgoorlie, WA, Australia
17. MinAnalytical Services, Perth, WA, Australia
18. MSALABS, Vancouver, BC, Canada
19. On Site Laboratory Services, Bendigo, VIC, Australia
20. Ostrea Mineral Laboratories, Inc., Laguna, Philippines
21. PT Geoservices Ltd, Cikarang, Jakarta Raya, Indonesia
22. PT Intertek Utama Services, Jakarta Timur, DKI Jakarta, Indonesia
23. Reminex Centre de Recherche, Marrakesh, Marrakesh-Safi, Morocco
24. SGS, Randfontein, Gauteng, South Africa
25. SGS Canada Inc., Vancouver, BC, Canada
26. SGS del Peru, Lima, Peru
27. SGS Tarkwa, Tarkwa, Western Region, Ghana
28. Shiva Analyticals Ltd, Bangalore North, Karnataka, India
29. Skyline Assayers & Laboratories, Tucson, Arizona, USA

***Please note: To preserve anonymity, the above numbered alphabetical list of participating laboratories does not correspond with the Lab ID numbering on the scatter plots below.***

Figure 1. Au by Pb Fire Assay in OREAS 211

SPC.1573.RR Au Phase 6.OREAS 211.4.Fire Assay.Au.Lab.210914.143814.SN

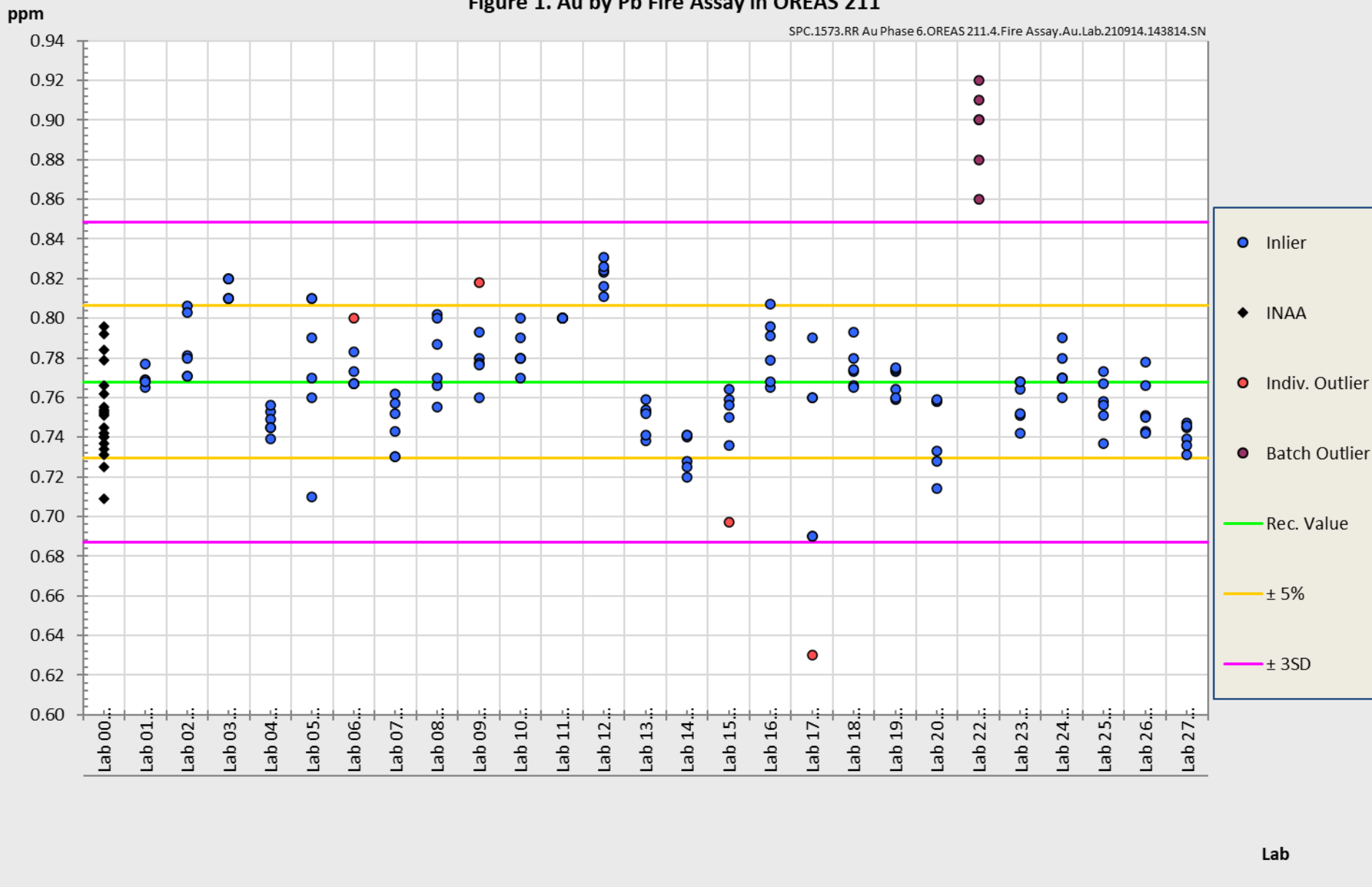


Figure 2. Au by Aqua Regia Digestion (sample weights 10-50g) in OREAS 211

SPC.1573.RR Au Phase 6.OREAS 211.4.AR Digest 10-50g.Au.Lab.210914.154206.SN

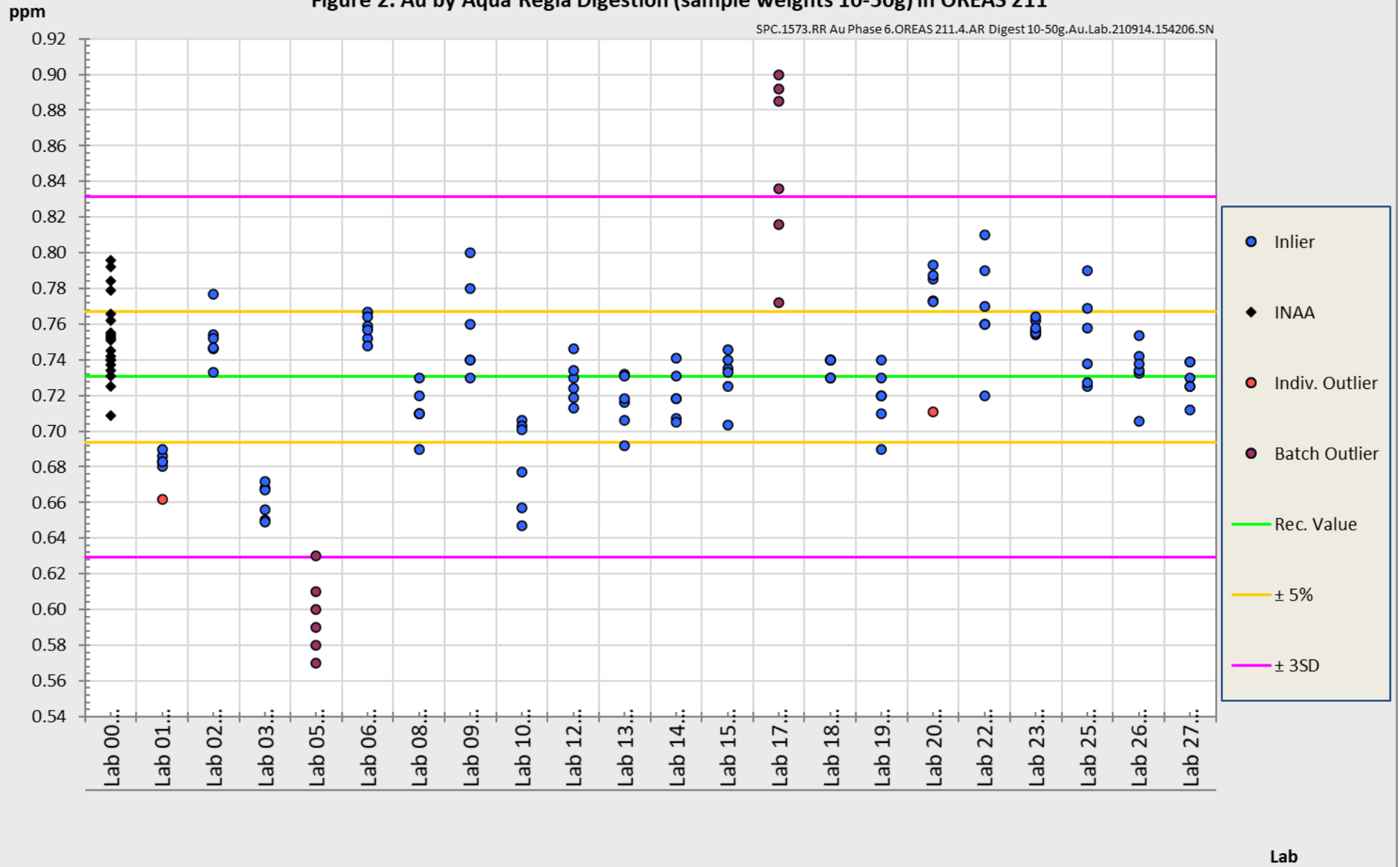


Figure 3. Au by Cyanide Leach in OREAS 211

SPC.1573.RR Au Phase 6.OREAS 211.4.CNL.Au.Lab.210914.144111.SN

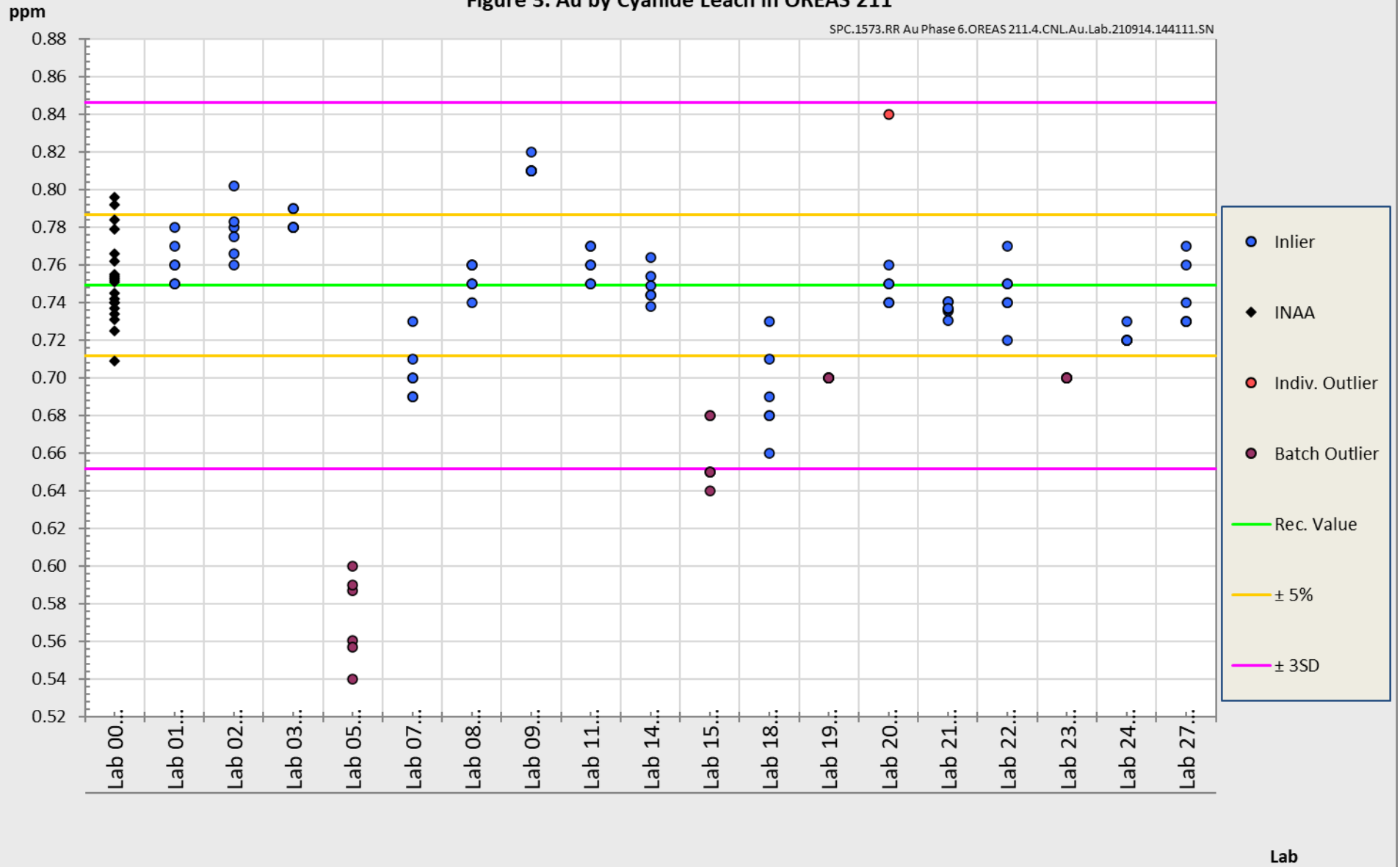
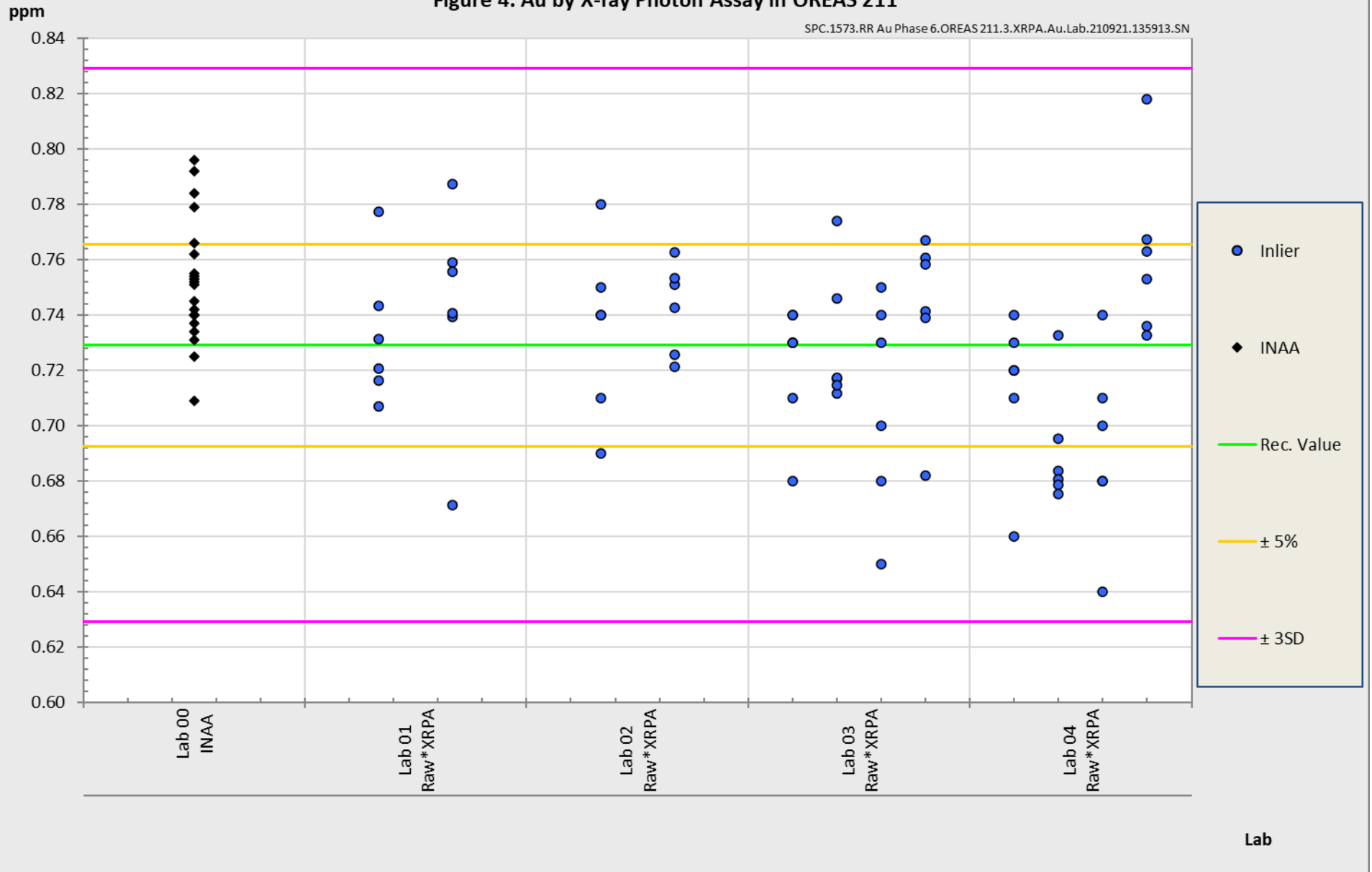


Figure 4. Au by X-ray Photon Assay in OREAS 211

SPC.1573.RR Au Phase 6. OREAS 211.3.XRPA.Au.Lab.210921.135913.SN



## METROLOGICAL TRACEABILITY

The analytical samples were selected in a manner representative of the entire batch of the prepared CRM. This 'representivity' was maintained in each submitted laboratory sample batch and ensures the user that the data is traceable from sample selection through to the analytical results that underlie the consensus values. Each analytical data set has been validated by its assayer through the inclusion of internal reference materials and QC checks during analysis.

The laboratories were chosen on the basis of their competence (from past performance in inter-laboratory programs undertaken by ORE Pty Ltd) for a particular analytical method, analyte or analyte suite and sample matrix. Most of these laboratories have and maintain ISO 17025 accreditation. The certified values presented in this report are calculated from the means of accepted data following robust statistical treatment, as detailed in this report.

Guide ISO/TR 16476:2016, section 5.3.1 describes metrological traceability in reference materials as it pertains to the transformation of the measurand. In this section it states, *"Although the determination of the property value itself can be made traceable to appropriate units through, for example, calibration of the measurement equipment used, steps like the transformation of the sample from one physical (chemical) state to another cannot. Such transformations may only be compared with a reference (when available), or among themselves. For some transformations, reference methods have been defined and may be used in certification projects to evaluate the uncertainty associated with such a transformation. In other cases, **only a comparison among different laboratories using the same method is possible. In this case, certification takes place on the basis of agreement among independent measurement results** (see ISO Guide 35:2006, Clause 10)."*

## COMMUTABILITY

The measurements of the results that underlie the certified values contained in this report were undertaken by methods involving pre-treatment (digestion/fusion) of the sample. This served to reduce the sample to a simple and well understood form permitting calibration using simple solutions of the CRM. Due to these methods being well understood and highly effective, commutability is not an issue for this CRM. All OREAS CRMs are sourced from natural ore minerals meaning they will display similar behaviour as routine 'field' samples in the relevant measurement process. Care should be taken to ensure 'matrix matching' as close as practically achievable. The matrix and mineralisation style of the CRM is described in the 'Source Material' section and users should select appropriate CRMs matching these attributes to their field samples.

## INTENDED USE

OREAS 211 is intended to cover all activities needed to produce a measurement result. This includes extraction, possible separation steps and the actual measurement process (the signal producing step). OREAS 211 may be used to calibrate the entire procedure by producing a pure substance CRM transformed into a calibration solution.

OREAS 211 is intended for the following uses:

- For the monitoring of laboratory performance in the analysis of analytes reported in Table 1 in geological samples;

- For the verification of analytical methods for analytes reported in Table 1;
- For the calibration of instruments used in the determination of the concentration of analytes reported in Table 1.

## STABILITY AND STORAGE INSTRUCTIONS

OREAS 211 is low in reactive sulphide (0.27 wt.% S) and in its unopened state and under normal conditions of storage has a shelf life beyond ten years. Its stability will be monitored at regular intervals and purchasers notified if any changes are observed.

### Single-use sachets

Following analysis of the CRM subsample it is the manufacturers' expectation that any remaining material is discarded. The stability of the material after opening the sachet is not within the scope of proper use. However, if opened sachets are resealed after opening, then under ordinary\* storage conditions the CRM will have a shelf-life beyond ten years.

*\*ordinary storage conditions: means storage not in direct sunlight in a dry, clean, well ventilated area at temperatures between -5° and 50°C.*

### Repeat-use packaging (e.g., 1kg plastic jars)

The stability of the CRM after opening the lid of the plastic jar is only affected by local atmospheric conditions with regard to oxidation and hygroscopic change. There is no segregation affect (please see our [Technical Note on Particle Segregation](#)).

The primary cause of change through oxidation is in relation to the breakdown of sulphide minerals to sulphates and is negligible for OREAS 211 given its low sulphur concentration (0.27 wt.% S).

Hygroscopic change is the amount of absorbed moisture (weakly held H<sub>2</sub>O- molecules on the surface of exposed material) following exposure to the local atmosphere. Usually, equilibration of material to the local atmosphere will only occur if the material is spread into a thin (~2mm thick) layer and left exposed for a period of 2 hours. OREAS 211 contains a non-hygroscopic matrix and therefore, exposure to a local atmosphere that is significantly different (in terms of temperature and humidity) from the climate during manufacturing will have negligible impact on the precision of results. The 'Physical Properties' section indicates the approximate moisture concentration.

## INSTRUCTIONS FOR CORRECT USE

The certified values for OREAS 211 refer to the concentration level in its packaged state. It should not be dried prior to weighing and analysis. 1kg jars permit repeated sampling as long as the lid is promptly re-secured to prevent airborne contamination.

### Minimum sample size

As a practical guide, the minimum mass of sample used should match the typical mass that the laboratories used in the interlaboratory (round robin) certification program. This means that different sample masses should be used depending on the operationally defined methodology.

- Au by fire assay:  $\geq 25\text{g}$ ;
- Au by aqua regia digestion:  $\geq 15\text{g}$ ;
- Au by cyanide leach:  $\geq 20\text{g}$ ;
- Au by PhotonAssay:  $\sim 350\text{g}$ ;
- 4-acid digestion with ICP-OES and/or MS finish:  $\geq 0.25\text{g}$ ;
- Aqua regia digestion with ICP-OES and/or MS finish:  $\geq 0.5\text{g}$ .

## QC monitoring using multiples of the Standard Deviation (SD)

In the application of SD's in monitoring performance it is important to note that not all laboratories function at the same level of proficiency and that different methods in use at a particular laboratory have differing levels of precision. Each laboratory has its own inherent SD (for a specific concentration level and analyte-method pair) based on the analytical process and this SD is not directly related to the round robin program.

The majority of data generated in the round robin program was produced by a selection of world class laboratories. The SD's thus generated are more constrained than those that would be produced across a randomly selected group of laboratories. To produce more generally achievable SD's the 'pooled' SD's provided in this report include inter-laboratory bias. This 'one size fits all' approach may require revision at the discretion of the QC manager concerned following careful scrutiny of QC control charts.

The performance gates shown in Table 1 are intended only to be used as a first principle guide as to what a laboratory may be able to achieve. Over a period of time monitoring your own laboratory's data for this CRM, SDs should be calculated directly from your own laboratory's process. This will enable you to establish more specific performance gates that are fit for purpose for your application as well as the ability to monitor bias. If your long-term trend analysis shows an average value that is within the 95% confidence interval then generally there is no cause for concern in regard to bias.

It is important to note that in the analytical industry there is no standardisation of the aqua regia digestion process. This method is a partial empirical digest and differences in recoveries for various analytes are commonplace. These are caused by variations in the digest conditions and can include the ratio of nitric to hydrochloric acids, acid strength, temperatures, leach times and secondary digestions. Recoveries for sulphide-hosted base metal sulphides approach total values, however, other analytes, in particular the lithophile elements, show greater sensitivity to method parameters. This can result in lack of consensus in an inter-laboratory certification program for these elements.

The approach applied here is to report certified values in those instances where reasonable agreement exists amongst a majority of participating laboratories. The results of specific laboratories may differ significantly from the certified values, but will, nonetheless, be valid and reproducible in the context of the specifics of the aqua regia method in use. Users of this reference material should, therefore, be mindful of this limitation when applying the certified values in a quality control program.

## HANDLING INSTRUCTIONS

Fine powders pose a risk to eyes and lungs and therefore standard precautions including the use of safety glasses and dust masks are advised.



## LEGAL NOTICE

Ore Research & Exploration Pty Ltd has prepared and statistically evaluated the property values of this reference material to the best of its ability. The Purchaser by receipt hereof releases and indemnifies Ore Research & Exploration Pty Ltd from and against all liability and costs arising from the use of this material and information.

## DOCUMENT HISTORY

Revision No.	Date	Changes applied
1	29 <sup>th</sup> Oct, 2021	Corrected list of 'Participating Laboratories'.
0	22 <sup>nd</sup> Sep, 2021	First publication.

## CERTIFYING OFFICER



29<sup>th</sup> Oct, 2021

Craig Hamlyn (B.Sc. Hons - Geology), Technical Manager - ORE P/L

## QMS CERTIFICATION

ORE Pty Ltd is ISO 9001:2015 certified by Lloyd's Register Quality Assurance Ltd for its quality management system including development, manufacturing, certification and supply of CRMs.



## REFERENCES

Govett, G.J.S. (1983). Handbook of Exploration Geochemistry, Volume 2: Statistics and Data Analysis in Geochemical Prospecting (Variations of accuracy and precision).

Ingamells, C. O. and Switzer, P. (1973). Talanta 20, 547-568.

ISO Guide 30:2015. Terms and definitions used in connection with reference materials.

ISO Guide 31:2015. Reference materials – Contents of certificates and labels.

ISO Guide 35:2017. Certification of reference materials - General and statistical principals.

ISO 16269:2014. Statistical interpretation of data – Part 6: Determination of statistical tolerance intervals.

ISO/TR 16476:2016, Reference Materials – Establishing and expressing metrological traceability of quantity values assigned to reference materials.

ISO 17025:2005, General requirements for the competence of testing and calibration laboratories.

Munsell Rock Color Book (2014). Rock-Color Chart Committee, Geological Society of America (GSA), 4300 44th Street SE, Grand Rapids, MI 49512.